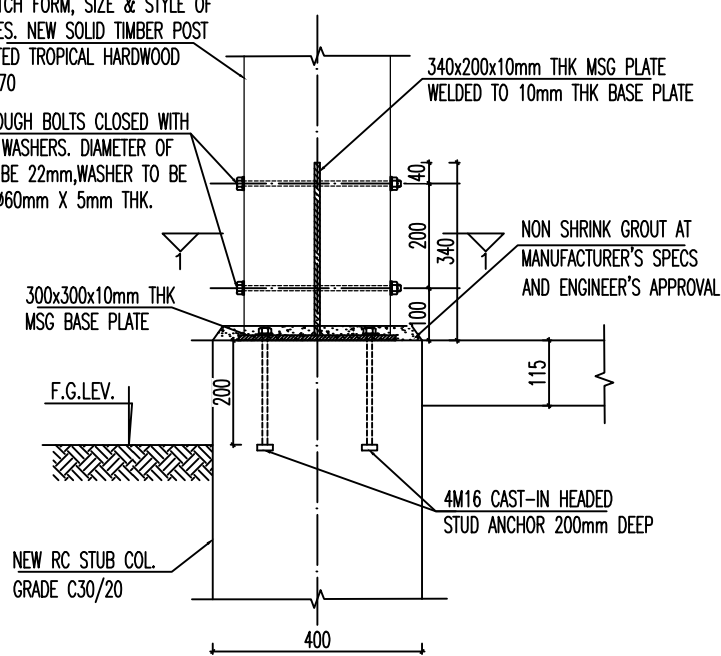
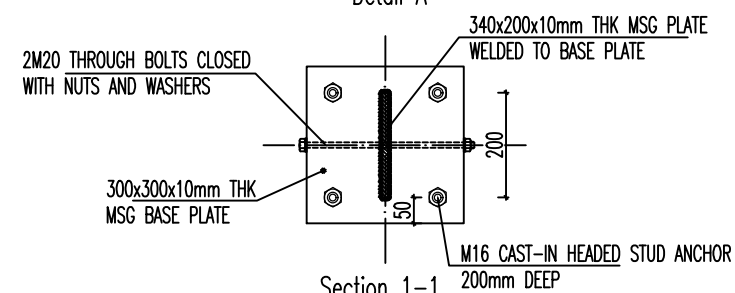


NEW Ø280mm OCTAGONAL SOLID TIMBER POST TO MATCH FORM, SIZE & STYLE OF EXISTING ONES. NEW SOLID TIMBER POST TO BE TREATED TROPICAL HARDWOOD Min Grade D70

2M20 THROUGH BOLTS CLOSED WITH NUTS AND WASHERS. DIAMETER OF HOLES TO BE 22mm, WASHER TO BE AT LEAST Ø60mm X 5mm THK.

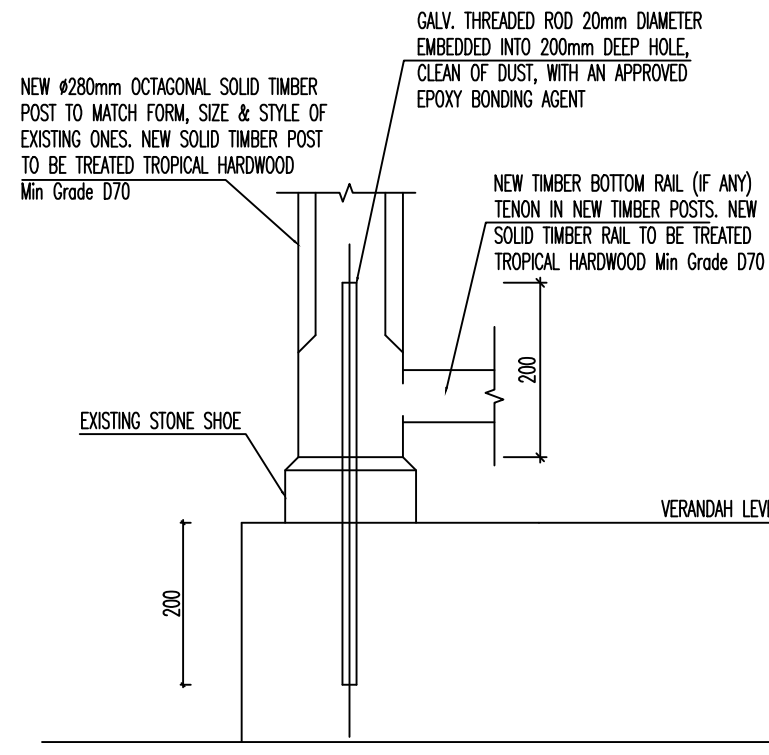


Detail A



Section 1-1

CONNECTION DETAILS FOR NEW TIMBER POST TO NEW STUB COLUMN



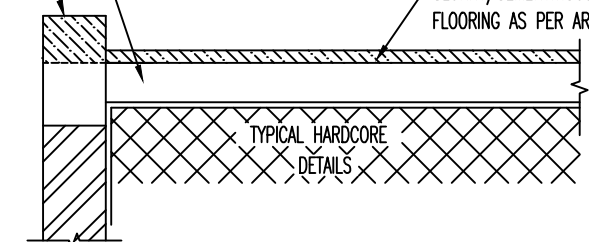
Detail B

CONNECTION DETAILS OF NEW TIMBER POST TO EXISTING STONE SHOE

EXISTING PERIMETER KICKER TO BE CUT AND REMOVED CAREFULLY AND REPLACED BY NEW 150mmX150mm RC KICKER AS PER DETAILS DEMOLITION TO BE DONE CAREFULLY USING LIGHT DUTY MECHANICAL TOOLS

EXISTING FLOOR SLAB TO BE CAREFULLY HACKED, CLEANED AND LEVELED USING LIGHT DUTY MECHANICAL TOOLS TO TAKE NEW FIBRE REINFORCED SCREED FOR FLOORING TO ARCH'S DETAILS AND SPECS

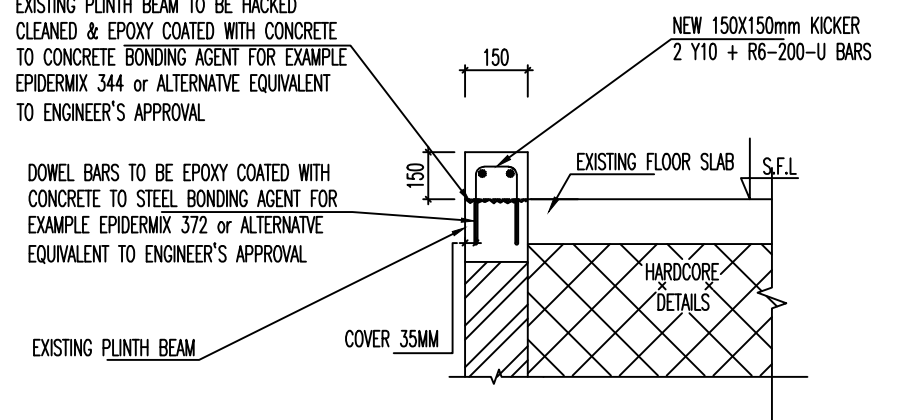
NEW (Max 40mm) FIBRE REINFORCED SCREED ON PRIOR APPLIED APPROVED BONDING SLURRY/CEMENTITIOUS ADHESIVES, TO LEVELED FLOORING AS PER ARCH'S DETAILS AND SPECS



METHOD STATEMENT FOR CASTING OF NEW FLOORING

EXISTING PLINTH BEAM TO BE HACKED CLEANED & EPOXY COATED WITH CONCRETE TO CONCRETE BONDING AGENT FOR EXAMPLE EPIDERMIX 344 or ALTERNATIVE EQUIVALENT TO ENGINEER'S APPROVAL

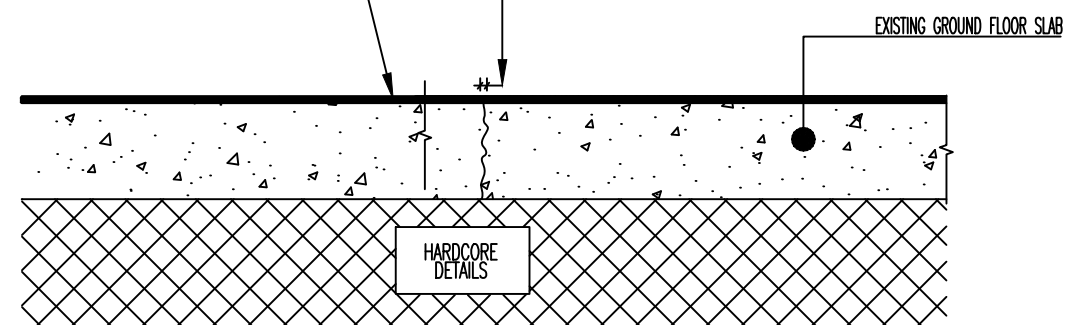
DOWEL BARS TO BE EPOXY COATED WITH CONCRETE TO STEEL BONDING AGENT FOR EXAMPLE EPIDERMIX 372 or ALTERNATIVE EQUIVALENT TO ENGINEER'S APPROVAL



METHOD STATEMENT FOR CASTING OF NEW 150x150mm KICKER

EXISTING SCREED TO BE REMOVED AND REPLACED BY NEW FIBRE REINFORCED SCREED MAX 40mm THICK. FLOOR FINISHES TO BE AS PER ARCH'S DETAILS AND MANUFACTURER'S SPECS

WIDEN CRACKS USING CHISEL AND HAMMER TO A MAXIMUM WIDTH OF 6mm. THOROUGHLY CLEAN/VACUUM CLEAN/PRESSURE CLEAN AND DRY SURFACE. THE CONTRACTOR SHOULD ENSURED THAT EXPOSED CRACKS ARE FREE FROM DUST AND ANY CONTAMINATION. APPLY EPOXY INJECTION OR ALTERNATIVE EQUIVALENT TO ENGINEER'S APPROVAL, TILL THE PRODUCT FILLS THE CRACKS AS PER MANUFACTURER'S INSTRUCTIONS, FINISH SURFACE AS PER MANUFACTURER'S INSTRUCTIONS AND TO THE ENGINEER'S APPROVAL. SURFACE TO BE PREPARED TO RECEIVE NEW SCREED FOR NEW FLOOR FINISH.



METHOD STATEMENT FOR REPAIRING OF CRACKS IN GROUND FLOOR SLAB

Project	
REFURBISHMENT WORKS AT SSR MEMORIAL MUSEUM SSR STREET PORT-LOUIS	
Title	
CONNECTION DETAILS (SHEET 2)	
Project Coordinator	R. Canhyee
Architect/S.Architect	J. Roja
Engineer/S.Engineer	R. Harah
Electrical/S.Elect.Eng.	S. Boodoo
Quantity Surveyor	H. Rambhojun
Technical Officer	R. Ramsurrun
Tech. Desn. Officer	Y.P. Vythelingum
Scale: 1 : 50	Date: 04.03.2022
MINISTRY OF NATIONAL INFRASTRUCTURE & COMMUNITY DEVELOPMENT PHOENIX	Comp. No. S
DRG. No. RFW/ST03	Revision