

TENDER CODING SHEET (RATE EXCLUSIVE OF GST TO BE FILLED UP BY THE TENDERER IN THIS CODING SHEET)					
NAME OF WORK : RENOVATION AND ADDITIONAL AMENITIES WORKS FOR EXISTING WORKING WOMEN'S HOSTEL BUILDING AT THANJAVUR IN THANJAVUR DISTRICT UNDER SOCIAL WELFARE DEPARTMENT					
<i>Item. No.</i>	<i>Description</i>	<i>Qty</i>	<i>Unit</i>	<i>Rate exclusive of GST in figures and in words</i>	<i>Amount</i>
1.1	Earth work excavation for foundation in all soils (including refilling) a. 0 to 2 mt.	31.20	1 Cum		
39	Supplying and fixing of MS Grills in position	60.00	1 Kg		
41	Painting 2 coats - New "iron work"	132.60	1 Sqm		
2.1.1	Annexure Supplying and filling the foundation and basement with gravel	5.20	1 Cum		

<i>Item. No.</i>	<i>Description</i>	<i>Qty</i>	<i>Unit</i>	<i>Rate exclusive of GST in figures and in words</i>	<i>Amount</i>
2.1.3	Supplying and filling the Foundation and Basement with Crushed stone sand	3.10	1 Cum		
2.1.6	Supplying of Stone dust	21.50	1 Cum		
3.1.1	C.C.1:5:10 using 40mm size HBSJ for Foundation & Basement using crushed stone sand	8.60	1 Cum		
3.2.1	P.C.C. 1:2:4 using 20mm size HBSJ for Foundation & Basement and other similar works using crushed stone sand	3.50	1 Cum		
6.6.1	Brick work in C.M. 1:5 (F& B) using Kiln Burnt Country bricks of size 22 x 11 x 7 cm (8 ³ / ₄ " x 4 ¹ / ₄ " x 2 ³ / ₄ ") using crushed stone sand	2.50	1 Cum		

<i>Item. No.</i>	<i>Description</i>	<i>Qty</i>	<i>Unit</i>	<i>Rate exclusive of GST in figures and in words</i>	<i>Amount</i>
18.1	Formwork using M.S.Sheet a. For Column footings, plinth beam, Grade beam, Raftbeam, Raft slab etc.,	12.20	1 Sqm		
33.1	Plastering in C.M. 1:5, 12 mm tk. using crushed stone sand	14.10	1 Sqm		
47.1	Supplying and fixing of stainless steel (304 Grade) Towel Rail 60cm long and 20mm dia with ornamental Brackets	22	Set		
50.2.1	Providing precast Kerb stone in C.C. 1:3:6, 450x300x150 mm using crushed stone sand	196.00	1 Rmt		
52.3	Supplying and laying of CPVC pipe (Higher pressure rating with higher pipe thickness) a. 20 mm with necessary CPVC/GI specials	81.00	1 Rmt		

<i>Item. No.</i>	<i>Description</i>	<i>Qty</i>	<i>Unit</i>	<i>Rate exclusive of GST in figures and in words</i>	<i>Amount</i>
54.1.1	Supplying and fixing of 15mm dia Half turn Brass core C.P. Tap (long body)	6	Each		
54.2.5	Supplying and fixing of CP Angle Cock Tap	22	Each		
54.2.6	Supplying and fixing of Brass Chromium plated Screw down Tap 15mm/12mm dia (Heavy type)	22	Each		
58.3	Supplying and fixing of PVC SWR pipe (Soil line) with ISI mark - type 'B'. b. 75 mm dia	15.00	1 Rmt		
60.1	Supplying and fixing of PVC Nahani trap (4way/2way) using crushed stone sand	10	Each		

<i>Item. No.</i>	<i>Description</i>	<i>Qty</i>	<i>Unit</i>	<i>Rate exclusive of GST in figures and in words</i>	<i>Amount</i>
69.1.1	Supplying and fixing of 16 amps 3 pin power plug socket using on a suitable Modular Box	47	Each		
75.1.2	Supplying and delivery of fan with electronic dimmer with ISI mark a) 48" (1200mm) sweep	1	Each		
75.1.4	Supplying and fixing of Wall mounting Fan 300mm sweep	16	Each		
77.5.1	Run off 2 Wires of 1.5 sqmm PVC insulated single core multi strand fire retardant flexible copper cable with ISI mark confirming IS: 694:1990 (Open Wiring)	134.00	1 Rmt		

<i>Item. No.</i>	<i>Description</i>	<i>Qty</i>	<i>Unit</i>	<i>Rate exclusive of GST in figures and in words</i>	<i>Amount</i>
77.7.1	Run off 2 Wires of 2.5 sqmm PVC insulated single core multi strand fire retardant flexible copper cable with ISI mark confirming IS: 694:1990 (Open Wiring)	252.00	1 Rmt		
86.1	Providing Cupboard shutter with frame using termite / water proof plywood 19mm thick over which laminated sheet of 0.80mm thick fixed inside the shutter and 1mm thick fixed in the outside of the shutter	63.00	1 Sqm		
97.1.1	Providing and fixing full height solid partition made of Aluminium extruded sections size of 50mmx25mmx1.2mm thick in both horizontal and vertical direction at 600mm c/c spacing.	9.00	1 Sqm		
100	Supplying and fixing of 9 watts LED Bulb	3	Each		
101	Supplying and fixing of 25 watts LED bulb with street light fittings	3	Each		

<i>Item. No.</i>	<i>Description</i>	<i>Qty</i>	<i>Unit</i>	<i>Rate exclusive of GST in figures and in words</i>	<i>Amount</i>
102	Supplying and fixing of 4'18 watts crystal LED tube light fittings	4	Each		
124.1	Supplying and laying of 32mm dia PVC pipe 10 Kg/cm ² Below Ground level	45.00	1 Rmt		
124.2	Supplying and laying of 25mm dia PVC pipe 10 Kg/cm ² Above Ground level	6.00	1 Rmt		
140	Supplying of 3 to 10mm size HBS jelly etc.,	21.50	1 Cum		
142	Supplying of Rubber Moulded Hydraulic pressed Paver block 83mm thick	267.80	1 Sqm		

<i>Item. No.</i>	<i>Description</i>	<i>Qty</i>	<i>Unit</i>	<i>Rate exclusive of GST in figures and in words</i>	<i>Amount</i>
142.1	Conveyance charges of 83mm thick Paver block including loading and unloading	267.80	1 Sqm		
143	Labour charges for spreading and levelling of 3mm to 10mm size HBSJ and stone dust to the required thickness with compaction by earth rammer and laying Paver block	21.50	1 Sqm		
165	Supplying and fixing in position of colour Galvanium sheet roof 0.47mm thick	43.00	1 Sqm		
379.5.1	Supplying and laying of Granite tiles flooring (Superfine polished with machine cut edges) of size 2'x1', 10mm tk (Ruby red) over cement plastering in CM 1:3 20mm thick using crushed stone sand	3.30	1 Sqm		

<i>Item. No.</i>	<i>Description</i>	<i>Qty</i>	<i>Unit</i>	<i>Rate exclusive of GST in figures and in words</i>	<i>Amount</i>
544	Supplying and fixing of smoke control automatic Sanitary napkin disposal machine (disposal capacity 25 Nos/day)	1	Each		
563.5	Supplying fabrication and fixing in position of mild steel angle truss including cost of materials and labour charges	662.60	1 Kg		
568	<u>5 KVA Inverter UPS Inverter Panel</u> Supplying and installation of UPS Inverter panel 5 KVA static UPS without Battery 48V static UPS to support Computer load & Non Computer load. Cost does not include batteries and battery stand requires 4 batteries only	1	Each		
568.1	Supplying and installation of Battery pack non SMF - 100 AH inverter type battery cost of SF stand master 100 AH flat inverter batteries capable of deep discharging for longer back up time	6	Each		

<i>Item. No.</i>	<i>Description</i>	<i>Qty</i>	<i>Unit</i>	<i>Rate exclusive of GST in figures and in words</i>	<i>Amount</i>
568.2	Supplying and fixing of Battery stand for 100 AH cost of a standard battery stand for housing 100 AH SMF batteries, the cost is including battery terminal and inter linking cables	1	Each		
597	<u>CCTV WORKS</u> Supply and installation of 2 Mega Pix Bullet Network camera 3.6mm fixed Lens (2.80mm optional) smart IR upto 30m IR Distance (outdoor camera)	5	Each		
598	Supply and installtion of Network Video Recorder for CCTV 16 channel - 2 SATA (2 Nos. Hard disk)	1	Each		
599	Supply and installation of Network Switch manageable L2 PoE switch, 24 Port, 10/100/1000, 2 SFP Ports with support for auto VLANs and support features like IP4/IP6, QoS, advanced security management, POE management along with 4U Rack should support 802.3 AF (802.3 at Type 1)	1	Each		

<i>Item. No.</i>	<i>Description</i>	<i>Qty</i>	<i>Unit</i>	<i>Rate exclusive of GST in figures and in words</i>	<i>Amount</i>
600	Supply and installation of 2 TB Hard Disk for the above NVR for extended recoding	1	Each		
601	Supply and installation of surface mounted 4 U metal Rack with Lock & Key arrangements	1	Each		
602	Supply and laying of HDMI cable 5 meter	1	Each		
603	Supply and fixing of Weather proof Camera Junction Box of size 4"x4" for out door cameras	6	Each		

<i>Item. No.</i>	<i>Description</i>	<i>Qty</i>	<i>Unit</i>	<i>Rate exclusive of GST in figures and in words</i>	<i>Amount</i>
604	Supply and installation of Unarmoured LAN & CCTV cable CAT 6	420.00	1 Rmt		
605	Supply and fixing of conduit pipe 25mm(1") (16 gauge)	572.00	1 Rmt		
606	Installation Testing and Commissioning of whole CCTV system with proper handing over & with proper documentation	1	Job		
609	Supplying, delivery and installation of 32" LED HD Ready Smart LED TV with multiple use commercial LED TV including cost of stabilizer	1	Each		

<i>Item. No.</i>	<i>Description</i>	<i>Qty</i>	<i>Unit</i>	<i>Rate exclusive of GST in figures and in words</i>	<i>Amount</i>
614	Providing and fixing the fly proof Velcro Mosquito Net	80.00	1 Sqm		
615	Supplying and fixing of Polyester cotton (Polyester 65% & Cotton 35%) Jaquar cloth with 260 GSM curtain cloth 48" width french 3 Folded fleet type stitching of approved colour	96.00	1 Sqm		
625	Supplying and delivery of Mattress of size 75"x36"x4" with primary material of Foam and coir and quilt, type-sandwich, Bed size-Single	61	Each		
626	Providing and fixing for the paint coated mild steel double decker bunk bed of size (0.91mx1.98m) using MS tube size 40x40 square tube, 25x25 square tube, 18 gauge MS sheet with side ladder and bed of 16 Gauge C.R.sheet	16	Each		

<i>Item. No.</i>	<i>Description</i>	<i>Qty</i>	<i>Unit</i>	<i>Rate exclusive of GST in figures and in words</i>	<i>Amount</i>
626.1	Providing and fixing for the paint coated single cot bed 16 gauge CR sheet size of (0.91mx1.98m) with M.S. leg of 18 gauge including all the necessary works	29	Each		
627	Supplying and fixing of wall mounted foldable study table of size (0.60mx0.40m) using 19mm thick of MDF board / Prelaminated BSL water proof plywood	44	Each		
627.1	Supplying and delivery of wooden Dining Table (4 seater)	5	Each		
628	Supplying and delivery of Steel table of size 4'x2'x2'-6" using top 19mm thick of MDF board / Prelaminated BSL water proof plywood legs made up of 1"x1" square tube and top alround frame made up of 1"x1" square tube, two drawers using 18 gauge MS sheet with lock & key arrangements	3	Each		

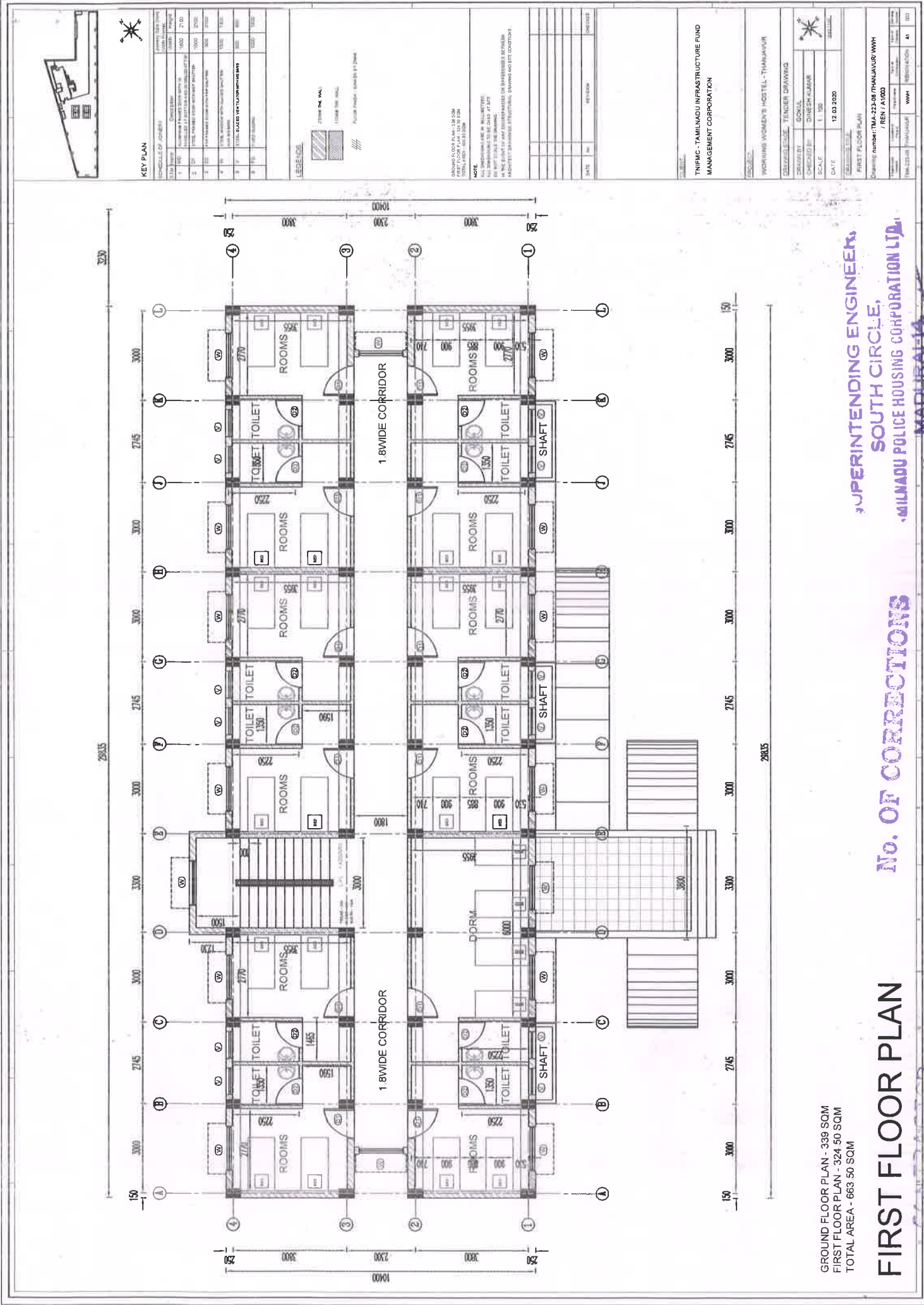
<i>Item. No.</i>	<i>Description</i>	<i>Qty</i>	<i>Unit</i>	<i>Rate exclusive of GST in figures and in words</i>	<i>Amount</i>
629	Supplying and delivery of Plastic Chair with arm	47	Each		
629.1	Supplying and delivery of wooden Dining Chair	15	Each		
630	Supply and fixing of 4'x3' Aluminium frame Notice Board	1	Each		
631	Supply and fixing of 3 seater Sofa set (Teak wood) with cushion	1	Each		

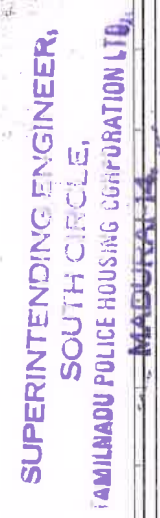
<i>Item. No.</i>	<i>Description</i>	<i>Qty</i>	<i>Unit</i>	<i>Rate exclusive of GST in figures and in words</i>	<i>Amount</i>
632	Supplying and delivery of Iron Table stand with press Holder, Foldable & Height Adjustable / Ironing Board with Multi function Ironing table / Ironing Board covers with foam pad	10	Each		
633	Supplying and delivery of Pillow (16"x24") filled with Recron	61	Each		
634	Supplying and delivery of Pillow cover (16"x24") using cotton fabric	122	Each		
635	Supplying and delivery of Bed sheet cover suitable size of single cot Mattresses	122	Each		
636	Supplying and fixing of 25mm dia 1mm thick, Stainless steel 304 Grade hollow tubes for the fixing of window curtains with ornamental brackets on either side	72.00	1 Rmt		

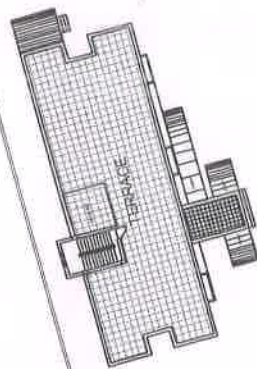
<i>Item. No.</i>	<i>Description</i>	<i>Qty</i>	<i>Unit</i>	<i>Rate exclusive of GST in figures and in words</i>	<i>Amount</i>
638	Supplying and fixing of Automatic Electrical water heater 5 star 15 lit capacity storage	22	Each		
639	Supplying and fixing of Drinking water fountain with cooler (stainless steel) capacity:80 litres	2	Each		
641	<u>Computer, WIFI, LED TV, Printer, TV Dish</u> Supplying and fixing of 4 GB DD R4 RAM, 1 TB HDDI Intel core ie 4 GB, 1 TB, DOS Desktop (with Monitor) 19.5" HD screen, Keyboard and Mouse	1	Each		
642	Supplying and fixing of Indoor 802.11 AC wave 2 2x2:2 wifi access point with all mounting kit and PoE (Power over Ethernet) injector	7	Each		
643	Supplying and fixing of unarmoured LAN & CCTV cable CAT6	350.00	1 Rmt		

<i>Item. No.</i>	<i>Description</i>	<i>Qty</i>	<i>Unit</i>	<i>Rate exclusive of GST in figures and in words</i>	<i>Amount</i>
644	Supplying and fixing of 2 U wall mount rack & accessories	1	Each		
645	Supplying and fixing of 8 PORT PoE LAN switch 10/100/1000 Mbps with necessary connection	2	Each		
646	Supply, delivery and Installation of 43" HD Ready smart LED TV with multiple use commercial LED TV including cost of stabilizer	1	Each		
647	Supplying and delivery of A4 All in one Printer (Scan/Copy/Xerox) Laserjet print copy scan, wifi printer, compact design, Reliable and fast printing	1	Each		
648	Supply, delivery and installation and fixing TV Dish HD Box with remote control	1	Each		

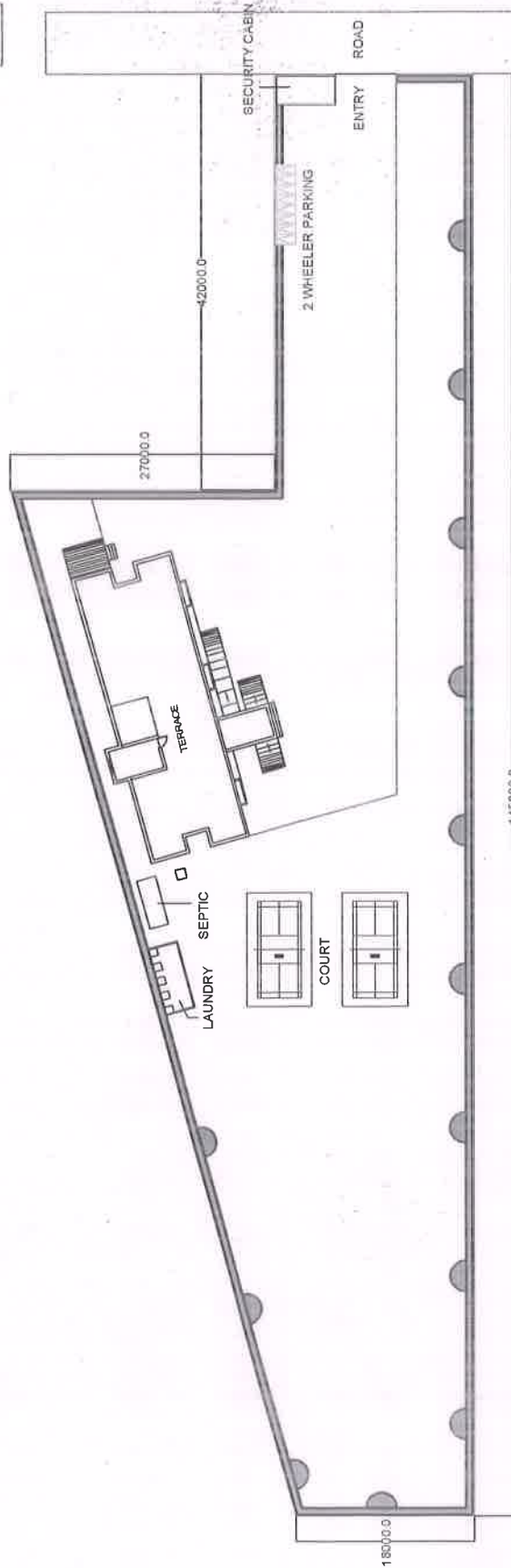
<i>Item. No.</i>	<i>Description</i>	<i>Qty</i>	<i>Unit</i>	<i>Rate exclusive of GST in figures and in words</i>	<i>Amount</i>
649	Supplying and fixing of Biometric with SSR Report (Self service Recorder)	1	Each		
650	Supplying and delivery of GC181 pack of 2, Dry Iron Box (Black) 1000 W	10	Each		
796	Two coat of Plastic emulsion paint including primer for outer wall surfaces	6.00	1 Sqm		
796.1	Painting the old walls with two coats of Plastic emulsion paint without primer and including thorough scrapping	1012.40	1 Sqm		
	TOTAL				
(Rupees					
)					







EXISTING SITE PLAN

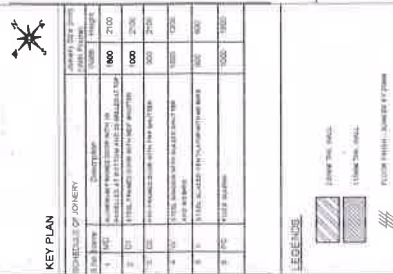


PROPOSED SITE PLAN

CONTRACTOR

No. OF CORRECTIONS

**SUPERINTENDING ENGINEER,
SOUTH CIRCLE,
MILNADU POLICE HOUSING CORPORATION LTD.,
MADURAI-14**

[illegible]

NOTE
ALL DIMENSIONS ARE IN MILLIMETERS
ALL DIMENSIONS TO BE ON AT SITE
1:50 SCALE THE DRAWING

[illegible]

TNIFMC - TAMILNADU INFRASTRUCTURE FUND
MANAGEMENT CORPORATION

1998

WORKING WOMEN'S HOSTEL - THANJAVUR

SAVING SPACE: TENDER DRAWING

Observed by	GOVIL
Reviewed by	DR. K. R. S. S. S. S.

SCALE	1 : 100
-------	---------

1	2	3	4	5	6	7	8	9	10	11	12	13	14	15	16	17	18	19	20	21	22	23	24	25	26	27	28	29	30	31	32	33	34	35	36	37	38	39	40	41	42	43	44	45	46	47	48	49	50	51	52	53	54	55	56	57	58	59	60	61	62	63	64	65	66	67	68	69	70	71	72	73	74	75	76	77	78	79	80	81	82	83	84	85	86	87	88	89	90	91	92	93	94	95	96	97	98	99	100	101	102	103	104	105	106	107	108	109	110	111	112	113	114	115	116	117	118	119	120	121	122	123	124	125	126	127	128	129	130	131	132	133	134	135	136	137	138	139	140	141	142	143	144	145	146	147	148	149	150	151	152	153	154	155	156	157	158	159	160	161	162	163	164	165	166	167	168	169	170	171	172	173	174	175	176	177	178	179	180	181	182	183	184	185	186	187	188	189	190	191	192	193	194	195	196	197	198	199	200	201	202	203	204	205	206	207	208	209	210	211	212	213	214	215	216	217	218	219	220	221	222	223	224	225	226	227	228	229	230	231	232	233	234	235	236	237	238	239	240	241	242	243	244	245	246	247	248	249	250	251	252	253	254	255	256	257	258	259	260	261	262	263	264	265	266	267	268	269	270	271	272	273	274	275	276	277	278	279	280	281	282	283	284	285	286	287	288	289	290	291	292	293	294	295	296	297	298	299	300	301	302	303	304	305	306	307	308	309	310	311	312	313	314	315	316	317	318	319	320	321	322	323	324	325	326	327	328	329	330	331	332	333	334	335	336	337	338	339	340	341	342	343	344	345	346	347	348	349	350	351	352	353	354	355	356	357	358	359	360	361	362	363	364	365	366	367	368	369	370	371	372	373	374	375	376	377	378	379	380	381	382	383	384	385	386	387	388	389	390	391	392	393	394	395	396	397	398	399	400	401	402	403	404	405	406	407	408	409	410	411	412	413	414	415	416	417	418	419	420	421	422	423	424	425	426	427	428	429	430	431	432	433	434	435	436	437	438	439	440	441	442	443	444	445	446	447	448	449	450	451	452	453	454	455	456	457	458	459	460	461	462	463	464	465	466
---	---	---	---	---	---	---	---	---	----	----	----	----	----	----	----	----	----	----	----	----	----	----	----	----	----	----	----	----	----	----	----	----	----	----	----	----	----	----	----	----	----	----	----	----	----	----	----	----	----	----	----	----	----	----	----	----	----	----	----	----	----	----	----	----	----	----	----	----	----	----	----	----	----	----	----	----	----	----	----	----	----	----	----	----	----	----	----	----	----	----	----	----	----	----	----	----	----	----	-----	-----	-----	-----	-----	-----	-----	-----	-----	-----	-----	-----	-----	-----	-----	-----	-----	-----	-----	-----	-----	-----	-----	-----	-----	-----	-----	-----	-----	-----	-----	-----	-----	-----	-----	-----	-----	-----	-----	-----	-----	-----	-----	-----	-----	-----	-----	-----	-----	-----	-----	-----	-----	-----	-----	-----	-----	-----	-----	-----	-----	-----	-----	-----	-----	-----	-----	-----	-----	-----	-----	-----	-----	-----	-----	-----	-----	-----	-----	-----	-----	-----	-----	-----	-----	-----	-----	-----	-----	-----	-----	-----	-----	-----	-----	-----	-----	-----	-----	-----	-----	-----	-----	-----	-----	-----	-----	-----	-----	-----	-----	-----	-----	-----	-----	-----	-----	-----	-----	-----	-----	-----	-----	-----	-----	-----	-----	-----	-----	-----	-----	-----	-----	-----	-----	-----	-----	-----	-----	-----	-----	-----	-----	-----	-----	-----	-----	-----	-----	-----	-----	-----	-----	-----	-----	-----	-----	-----	-----	-----	-----	-----	-----	-----	-----	-----	-----	-----	-----	-----	-----	-----	-----	-----	-----	-----	-----	-----	-----	-----	-----	-----	-----	-----	-----	-----	-----	-----	-----	-----	-----	-----	-----	-----	-----	-----	-----	-----	-----	-----	-----	-----	-----	-----	-----	-----	-----	-----	-----	-----	-----	-----	-----	-----	-----	-----	-----	-----	-----	-----	-----	-----	-----	-----	-----	-----	-----	-----	-----	-----	-----	-----	-----	-----	-----	-----	-----	-----	-----	-----	-----	-----	-----	-----	-----	-----	-----	-----	-----	-----	-----	-----	-----	-----	-----	-----	-----	-----	-----	-----	-----	-----	-----	-----	-----	-----	-----	-----	-----	-----	-----	-----	-----	-----	-----	-----	-----	-----	-----	-----	-----	-----	-----	-----	-----	-----	-----	-----	-----	-----	-----	-----	-----	-----	-----	-----	-----	-----	-----	-----	-----	-----	-----	-----	-----	-----	-----	-----	-----	-----	-----	-----	-----	-----	-----	-----	-----	-----	-----	-----	-----	-----	-----	-----	-----	-----	-----	-----	-----	-----	-----	-----	-----	-----	-----	-----	-----	-----	-----	-----	-----	-----	-----	-----	-----	-----	-----	-----	-----	-----	-----	-----	-----	-----	-----	-----	-----	-----	-----	-----	-----	-----	-----	-----	-----	-----	-----

DRAWING TITLE

EXISTING AND PROPOSED

REN - A1001				
RESEARCH NUMBER	RESEARCH TITLE	RESEARCHER	RESEARCH YEAR	RESEARCH STATUS
1	1.1	1.1.1	1.1.2	1.1.3
2	2.1	2.1.1	2.1.2	2.1.3
3	3.1	3.1.1	3.1.2	3.1.3
4	4.1	4.1.1	4.1.2	4.1.3
5	5.1	5.1.1	5.1.2	5.1.3
6	6.1	6.1.1	6.1.2	6.1.3
7	7.1	7.1.1	7.1.2	7.1.3
8	8.1	8.1.1	8.1.2	8.1.3
9	9.1	9.1.1	9.1.2	9.1.3
10	10.1	10.1.1	10.1.2	10.1.3
11	11.1	11.1.1	11.1.2	11.1.3
12	12.1	12.1.1	12.1.2	12.1.3
13	13.1	13.1.1	13.1.2	13.1.3
14	14.1	14.1.1	14.1.2	14.1.3
15	15.1	15.1.1	15.1.2	15.1.3
16	16.1	16.1.1	16.1.2	16.1.3
17	17.1	17.1.1	17.1.2	17.1.3
18	18.1	18.1.1	18.1.2	18.1.3
19	19.1	19.1.1	19.1.2	19.1.3
20	20.1	20.1.1	20.1.2	20.1.3
21	21.1	21.1.1	21.1.2	21.1.3
22	22.1	22.1.1	22.1.2	22.1.3
23	23.1	23.1.1	23.1.2	23.1.3
24	24.1	24.1.1	24.1.2	24.1.3
25	25.1	25.1.1	25.1.2	25.1.3
26	26.1	26.1.1	26.1.2	26.1.3
27	27.1	27.1.1	27.1.2	27.1.3
28	28.1	28.1.1	28.1.2	28.1.3
29	29.1	29.1.1	29.1.2	29.1.3
30	30.1	30.1.1	30.1.2	30.1.3
31	31.1	31.1.1	31.1.2	31.1.3
32	32.1	32.1.1	32.1.2	32.1.3
33	33.1	33.1.1	33.1.2	33.1.3
34	34.1	34.1.1	34.1.2	34.1.3
35	35.1	35.1.1	35.1.2	35.1.3
36	36.1	36.1.1	36.1.2	36.1.3
37	37.1	37.1.1	37.1.2	37.1.3
38	38.1	38.1.1	38.1.2	38.1.3
39	39.1	39.1.1	39.1.2	39.1.3
40	40.1	40.1.1	40.1.2	40.1.3
41	41.1	41.1.1	41.1.2	41.1.3
42	42.1	42.1.1	42.1.2	42.1.3
43	43.1	43.1.1	43.1.2	43.1.3
44	44.1	44.1.1	44.1.2	44.1.3
45	45.1	45.1.1	45.1.2	45.1.3
46	46.1	46.1.1	46.1.2	46.1.3
47	47.1	47.1.1	47.1.2	47.1.3
48	48.1	48.1.1	48.1.2	48.1.3
49	49.1	49.1.1	49.1.2	49.1.3
50	50.1	50.1.1	50.1.2	50.1.3
51	51.1	51.1.1	51.1.2	51.1.3
52	52.1	52.1.1	52.1.2	52.1.3
53	53.1	53.1.1	53.1.2	53.1.3
54	54.1	54.1.1	54.1.2	54.1.3
55	55.1	55.1.1	55.1.2	55.1.3
56	56.1	56.1.1	56.1.2	56.1.3
57	57.1	57.1.1	57.1.2	57.1.3
58	58.1	58.1.1	58.1.2	58.1.3
59	59.1	59.1.1	59.1.2	59.1.3
60	60.1	60.1.1	60.1.2	60.1.3
61	61.1	61.1.1	61.1.2	61.1.3
62	62.1	62.1.1	62.1.2	62.1.3
63	63.1	63.1.1	63.1.2	63.1.3
64	64.1	64.1.1	64.1.2	64.1.3
65	65.1	65.1.1	65.1.2	65.1.3
66	66.1	66.1.1	66.1.2	66.1.3
67	67.1	67.1.1	67.1.2	67.1.3
68	68.1	68.1.1	68.1.2	68.1.3
69	69.1	69.1.1	69.1.2	69.1.3
70	70.1	70.1.1	70.1.2	70.1.3
71	71.1	71.1.1	71.1.2	71.1.3
72	72.1	72.1.1	72.1.2	72.1.3
73	73.1	73.1.1	73.1.2	73.1.3
74	74.1	74.1.1	74.1.2	74.1.3
75	75.1	75.1.1	75.1.2	75.1.3
76	76.1	76.1.1	76.1.2	76.1.3
77	77.1	77.1.1	77.1.2	77.1.3
78	78.1	78.1.1	78.1.2	78.1.3
79	79.1	79.1.1	79.1.2	79.1.3
80	80.1	80.1.1	80.1.2	80.1.3
81	81.1	81.1.1	81.1.2	81.1.3
82	82.1	82.1.1	82.1.2	82.1.3
83	83.1	83.1.1	83.1.2	83.1.3
84	84.1	84.1.1	84.1.2	84.1.3
85	85.1	85.1.1	85.1.2	85.1.3
86	86.1	86.1.1	86.1.2	86.1.3
87	87.1	87.1.1	87.1.2	87.1.3
88	88.1	88.1.1	88.1.2	88.1.3
89	89.1	89.1.1	89.1.2	89.1.3
90	90.1	90.1.1	90.1.2	90.1.3
91	91.1	91.1.1	91.1.2	91.1.3
92	92.1	92.1.1	92.1.2	92.1.3
93	93.1	93.1.1	93.1.2	93.1.3
94	94.1	94.1.1	94.1.2	94.1.3
95	95.1	95.1.1	95.1.2	95.1.3
96	96.1	96.1.1	96.1.2	96.1.3
97	97.1	97.1.1	97.1.2	97.1.3
98	98.1	98.1.1	98.1.2	98.1.3
99	99.1	99.1.1	99.1.2	99.1.3
100	100.1	100.1.1	100.1.2	100.1.3