

TENDER CODING SHEET (RATE EXCLUSIVE OF GST TO BE FILLED UP BY THE TENDERER IN THIS CODING SHEET)					
NAME OF WORK : RENOVATION OF EXISTING WORKING WOMEN'S HOSTEL BUILDING AT VEERAMANIKKAPURAM PALAYAMKOTTAI IN TIRUNELVELI CITY UNDER SOCIAL WELFARE DEPARTMENT					
<i>Item. No.</i>	<i>Description</i>	<i>Qty</i>	<i>Unit</i>	<i>Rate exclusive of GST in figures and in words</i>	<i>Amount</i>
1.1	Earth work excavation for foundation in all soils (including refilling) a. 0 to 2 mt.	26.80	1 Cum		
13.1	Filling with excavated earth	11.08	1 Cum		
39	Supplying and fixing of MS Grills in position	57.80	1 Kg		
40	Painting 2 coats - New "wood work"	78.60	1 Sqm		

<i>Item. No.</i>	<i>Description</i>	<i>Qty</i>	<i>Unit</i>	<i>Rate exclusive of GST in figures and in words</i>	<i>Amount</i>
41	Painting 2 coats - New "iron work"	11.40	1 Sqm		
52	Supplying and laying of PVC Water supply (ASTM) pipe a. 32 mm dia	35.00	1 Rmt		
	b. 25 mm dia	185.00	1 Rmt		
	c. 20 mm dia	57.00	1 Rmt		
69	Electrical arrangements Supplying and fixing of 15 Amp 3 pin plug socket	32	Each		

<i>Item. No.</i>	<i>Description</i>	<i>Qty</i>	<i>Unit</i>	<i>Rate exclusive of GST in figures and in words</i>	<i>Amount</i>
74	Charges for assembling and fixing of ceiling "Fan"	3	Each		
2.1.1	Annexure Supplying and filling the foundation and basement with gravel	12.30	1 Cum		
2.1.3	Supplying and filling the Foundation and Basement with Crushed stone sand	2.10	1 Cum		
2.1.6	Supplying of Stone dust	4.30	1 Cum		
3.1.1	C.C.1:5:10 using 40mm size HBSJ for Foundation & Basement using crushed stone sand	5.80	1 Cum		

<i>Item. No.</i>	<i>Description</i>	<i>Qty</i>	<i>Unit</i>	<i>Rate exclusive of GST in figures and in words</i>	<i>Amount</i>
3.2.1	P.C.C. 1:2:4 using 20mm size HBSJ for Foundation & Basement and other similar works using crushed stone sand	1.40	1 Cum		
6.6.1	Brick work in C.M. 1:5 (F& B) using Kiln Burnt Country bricks of size 22 x 11 x 7 cm (8 ¾ " x 4 ¼ " x 2 ¾ ") using crushed stone sand	26.70	1 Cum		
9.6.1	Brick work in C.M. 1:6 using Kiln Burnt Country bricks of size 22x11x7cm (8 ¾ " x 4 ¼ " x 2 ¾ ") using crushed stone sand a. In Ground Floor	0.50	1 Cum		
10.6.1	Brick partition work in C.M. 1:4 using Kiln Burnt Country bricks of size 22x11x7 cm (8 ¾"x4 ¼ "x2 ¾") 110 mm tk (B.P.) using crushed stone sand b. In Ground Floor	9.00	1 Sqm		

<i>Item. No.</i>	<i>Description</i>	<i>Qty</i>	<i>Unit</i>	<i>Rate exclusive of GST in figures and in words</i>	<i>Amount</i>
16.1.1	Precast Jally ventilator 50mm thick using standardised concrete mix M20 Grade using crushed stone sand a. In Ground Floor	0.50	1 Sqm		
18.1	Formwork using M.S.Sheet c. For Square and rectangular columns and small quantities	1.00	1 Sqm		
21.5.2	Supplying and fixing of soild UPVC door shutter with frame	4.80	1 Sqm		
22.3.3	Cup board/ward robes double leaf shutters using 9mm thick phenol bonded BWR grade plywood, TW frames, styles & rails including two coat enamel paint over one coat primer with brass screws	78.60	1 Sqm		

<i>Item. No.</i>	<i>Description</i>	<i>Qty</i>	<i>Unit</i>	<i>Rate exclusive of GST in figures and in words</i>	<i>Amount</i>
23.2.1	Supplying and fixing of 4mm thick pin headed glass panels with Aluminium beedings	3.50	1 Sqm		
26.1	Flooring in C.C.1:5:10 using 40mm size HBSJ using crushed stone sand	2.10	1 Cum		
28.1	Floor plastering in C.M. 1:4, 20mm thick. using crushed stone sand	10.60	1 Sqm		
29.8.1	Supplying and fixing of Glazed tiles using Grout (Tile Joint Filler) using crushed stone sand	38.70	1 Sqm		

<i>Item. No.</i>	<i>Description</i>	<i>Qty</i>	<i>Unit</i>	<i>Rate exclusive of GST in figures and in words</i>	<i>Amount</i>
29.9.1	Supplying and laying of Floor ceramic tiles (Anti-skid) using Grout (Tile Joint Filler). using crushed stone sand	30.40	1 Sqm		
29.9.2	Repointing of Ceramic floor tiles (Anti-skid) using Grout	30.40	1 Sqm		
32.1.1	Hydraulic Pressed tiles (23 cm x 23 cm x 2 cm thick) mixed with water proofing compound @ 2% by weight of cement using crushed stone sand	35.90	1 Sqm		
33.1	Plastering in C.M. 1:5, 12 mm tk. using crushed stone sand	227.80	1 Sqm		

<i>Item. No.</i>	<i>Description</i>	<i>Qty</i>	<i>Unit</i>	<i>Rate exclusive of GST in figures and in words</i>	<i>Amount</i>
34.1	Plastering in C.M. 1:4, 12 mm tk. using crushed stone sand	45.00	1 Sqm		
35.1.1	Plastering in CM 1:3, 12 mm tk. with WPC using crushed stone sand	74.40	1 Sqm		
38.4.3	Painting the old walls with two coats of Oil Bound Distemper over existing wall surfaces including thorough scrapping	943.00	1 Sqm		
38.6	Primer coat using one coat of white cement over the cement plastered/ concrete new wall surfaces or other similar works	11.20	1 Sqm		

<i>Item. No.</i>	<i>Description</i>	<i>Qty</i>	<i>Unit</i>	<i>Rate exclusive of GST in figures and in words</i>	<i>Amount</i>
40.1	Two coats of painting over the old wood work including thorough scrapping	48.30	1 Sqm		
41.1	Two coats of painting over the old iron work including thorough scrapping	78.60	1 Sqm		
47.1	Supplying and fixing of Brass chromium Plated Towel Rail 60cm long and 20mm dia with Brackets	3	Set		
54.1.1	Supplying and fixing of 15mm dia Half turn Brass core C.P. Tap (long body)	12	Each		

<i>Item. No.</i>	<i>Description</i>	<i>Qty</i>	<i>Unit</i>	<i>Rate exclusive of GST in figures and in words</i>	<i>Amount</i>
54.2.1	Supplying and fixing of 15mm dia Half turn Brass core C.P. Tap (Short body)	23	Each		
54.2.3	Supplying and fixing of Chromium plated Angle valve	5	Each		
54.2.4	Supplying and fixing of Brass Chromium plated Pillar Tap (Heavy type) 15mm dia	22	Each		
56.3.2	Supplying and fixing of Indian Water closet white glazed (Oriya type) of size 580 x 440mm with PVC SWR Grade 'P' or 'S' trap - in G.F. using crushed stone sand	2	Each		

<i>Item. No.</i>	<i>Description</i>	<i>Qty</i>	<i>Unit</i>	<i>Rate exclusive of GST in figures and in words</i>	<i>Amount</i>
56.4.2	Supplying and fixing of Indian Water closet white glazed (Oriya type) of size 580 x 440mm with PVC SWR Grade 'P' or 'S' trap - Other than G.F. using crushed stone sand	4	Each		
58.3	Supplying and fixing of PVC SWR pipe (Soil line) with ISI mark - type 'B'. a. 110 mm dia.	54.00	1 Rmt		
	b. 75 mm dia	40.00	1 Rmt		
60.1	Supplying and fixing of PVC Nahani trap (4way/2way) using crushed stone sand	2	Each		

<i>Item. No.</i>	<i>Description</i>	<i>Qty</i>	<i>Unit</i>	<i>Rate exclusive of GST in figures and in words</i>	<i>Amount</i>
61.1.1	Supplying and fixing of UPVC Non Pressure Pipe of SN8 SDR 34 (S 16.5) as per IS 15328/2003 a) 110mm dia UPVC Non Pressure pipe	15.00	1 Rmt		
	b) 160mm dia UPVC Non Pressure pipe	15.00	1 Rmt		
64.1	Wiring with 1.5 sqmm PVC insulated single core multi strand fire retardant flexible copper cable with ISI mark confirming IS: 694:1990. b. Light point without ceiling rose	2	Each Point		
68.2.2	Wiring with 1.5 sqmm PVC insulated single core multi strand fire retardant flexible copper cable with ISI mark confirming IS: 694:1990 for 5 amps 5 pin plug socket point at Convenient Places.(Open wiring)	14	Each Point		
75.1.2	Supplying and delivery of fan with electronic dimmer with ISI mark a) 48" (1200mm) sweep	3	Each		

<i>Item. No.</i>	<i>Description</i>	<i>Qty</i>	<i>Unit</i>	<i>Rate exclusive of GST in figures and in words</i>	<i>Amount</i>
75.1.3	Supplying and fixing of Stepped Electronic 300W/450W Square Type Fan Regulator	22	Each		
75.1.4	Supplying and fixing of Wall mounting Fan 300mm sweep	14	Each		
77.5.1	Run off 2 Wires of 1.5 sqmm PVC insulated single core multi strand fire retardant flexible copper cable with ISI mark confirming IS: 694:1990 (Open Wiring)	180.00	1 Rmt		
77.7.1	Run off 2 Wires of 2.5 sqmm PVC insulated single core multi strand fire retardant flexible copper cable with ISI mark confirming IS: 694:1990 (Open Wiring)	225.00	1 Rmt		
100	Supplying and fixing of 9 watts LED Bulb	38	Each		

<i>Item. No.</i>	<i>Description</i>	<i>Qty</i>	<i>Unit</i>	<i>Rate exclusive of GST in figures and in words</i>	<i>Amount</i>
101	Supplying and fixing of 25 watts LED bulb with street light fittings	4	Each		
102	Supplying and fixing of 4'18 watts crystal LED tube light fittings	11	Each		
124	Supplying and delivery of following dia GI pipes 'B' class in position a) 50mm dia GI pipe	28.40	1 Rmt		
	b) 40mm dia GI pipe	29.20	1 Rmt		
125	Fabrication and fixing in position of Truss members and Purlins by using 50mm dia GI pipe	280.90	1 Kg		

<i>Item. No.</i>	<i>Description</i>	<i>Qty</i>	<i>Unit</i>	<i>Rate exclusive of GST in figures and in words</i>	<i>Amount</i>
140	Supplying of 3 to 10mm size HBS jelly etc.,	4.30	1 Cum		
141	Conveyance charges of 63mm tk Paver block including loading and unloading	57.00	1 Sqm		
143	Labour charges for spreading and levelling of 3mm to 10mm size HBSJ and stone dust to the required thickness with compaction by earth rammer and laying Paver block	57.00	1 Sqm		
165	Supplying and fixing in position of colour Galvanium sheet roof 0.47mm thick	15.70	1 Sqm		

<i>Item. No.</i>	<i>Description</i>	<i>Qty</i>	<i>Unit</i>	<i>Rate exclusive of GST in figures and in words</i>	<i>Amount</i>
167	Supplying and fixing of 200mm dia 6mm tk circular MS flange	8	Each		
168	Supplying and fixing of necessary required MS bolts & nuts	0.90	1 Kg		
344.3	Supplying and fixing of PVC / Fibre Glass Framed 5.5mm thick Mirror of size 600mm x 450mm, Shelf type with Hard Board Backing	22	Each		
361.1	Supplying and laying of Concrete designer tiles flooring in C.M. 1:3 (one of cement and three of crushed stone sand) 20mm thick	4.50	1 Sqm		

<i>Item. No.</i>	<i>Description</i>	<i>Qty</i>	<i>Unit</i>	<i>Rate exclusive of GST in figures and in words</i>	<i>Amount</i>
361.2	Repainting of Concrete designer tiles flooring by using white / colour cement	21.00	1 Sqm		
367	Providing wooden melamen polish for main door new wood work	9.00	1 Sqm		
378.2	Supplying and fixing of Stain free Nano polish Vetrified tiles in CM 1:3, 20mm tk using crushed stone sand	5.40	1 Sqm		
379.5.1	Supplying and laying of Granite tiles flooring (Super fine polished with machine cut edges) of size 2'x1', 10mm tk (Jet Black) over cement plastering in CM 1:3 20mm thick using crushed stone sand	2.20	1 Sqm		

<i>Item. No.</i>	<i>Description</i>	<i>Qty</i>	<i>Unit</i>	<i>Rate exclusive of GST in figures and in words</i>	<i>Amount</i>
534	Supplying and erecting in position of water purifier 500 litres capacity Industrial Model Reverse Osmosis water-cum-Purifier	1	Set		
544	Supplying and fixing of smoke control automatic Sanitary napkin disposal machine (disposal capacity 25 Nos/day)	1	Each		
568	<u>5 KVA Inverter</u> <u>UPS Inverter Panel</u> Supplying and installation of UPS Inverter panel 5 KVA static UPS without Battery 48V static UPS to support Computer load & Non Computer load. Cost does not include batteries and battery stand requires 4 batteries only	1	Each		
568.1	Supplying and installation of Battery pack non SMF - 100 AH inverter type battery cost of SF stand master 100 AH flat inverter batteries capable of deep discharging for longer back up time	6	Each		

<i>Item. No.</i>	<i>Description</i>	<i>Qty</i>	<i>Unit</i>	<i>Rate exclusive of GST in figures and in words</i>	<i>Amount</i>
568.2	Supplying and fixing of Battery stand for 100 AH cost of a standard battery stand for housing 100 AH SMF batteries, the cost is including battery terminal and inter linking cables	1	Each		
584	Supply and fixing of water CO ₂ stored pressure type 9 litres capacity Fire extinguisher as per New IS 15683 complete	1	Each		
585	Supply and fixing of stored pressure ABC (Mono Ammonium Phospate) powder type Fire Extinguisher of 6 Kg capacity as per IS:15683	6	Each		
597	<u>CCTV WORKS</u> Supply and installation of 2 Mega Pix Bullet Network camera 3.6mm fixed Lens (2.80mm optional) smart IR upto 30m IR Distance (outdoor camera)	5	Each		

<i>Item. No.</i>	<i>Description</i>	<i>Qty</i>	<i>Unit</i>	<i>Rate exclusive of GST in figures and in words</i>	<i>Amount</i>
598	Supply and installtion of Network Video Recorder for CCTV 16 channel - 2 SATA (2 Nos. Hard disk)	1	Each		
599	Supply and installation of Network Switch manageable L2 PoE switch, 24 Port, 10/100/1000, 2 SFP Ports with support for auto VLANs and support features like IP4/IP6, QoS, advanced security management, POE management along with 4U Rack should support 802.3 AF (802.3 at Type 1)	1	Each		
600	Supply and installation of 2 TB Hard Disk for the above NVR for extended recoding	1	Each		
601	Supply and installation of surface mounted 4 U metal Rack with Lock & Key arrangements	1	Each		

<i>Item. No.</i>	<i>Description</i>	<i>Qty</i>	<i>Unit</i>	<i>Rate exclusive of GST in figures and in words</i>	<i>Amount</i>
602	Supply and laying of HDMI cable 5 meters	1	Each		
603	Supply and fixing of Weather proof Camera Junction Box of size 4"x4" for out door cameras	5	Each		
604	Supply and installation of Unarmoured LAN & CCTV cable CAT 6	350.00	1 Rmt		
605	Supply and fixing of conduit pipe 25mm(1") (16 gauge)	200.00	1 Rmt		

<i>Item. No.</i>	<i>Description</i>	<i>Qty</i>	<i>Unit</i>	<i>Rate exclusive of GST in figures and in words</i>	<i>Amount</i>
606	Installation Testing and Commissioning of whole CCTV system with proper handing over & with proper documentation	1	Job		
609	Supplying, delivery and installation of 32" LED HD Ready Smart LED TV with multiple use commercial LED TV including cost of stabilizer	2	Each		
614	Providing and fixing the fly proof Velcro Mosquito Net	92.20	1 Sqm		
615	Supplying and fixing of Polyester cotton (Polyester 65% & Cotton 35%) Jaquar cloth with 260 GSM curtain cloth 48" width french 3 Folded fleet type stitching of approved colour	75.40	1 Sqm		

<i>Item. No.</i>	<i>Description</i>	<i>Qty</i>	<i>Unit</i>	<i>Rate exclusive of GST in figures and in words</i>	<i>Amount</i>
624	Supplying and fixing of Polycarbonate sheet 6mm thick in position with necessary fittings	10.40	1 Sqm		
625	Supplying and delivery of Mattress of size 75"x36"x4" with primary material of Foam and coir and quilt, type-sandwich, Bed size-Single	61	Each		
626	Providing and fixing for the paint coated mild steel double decker bunk bed of size (0.91mx1.98m) using MS tube size 40x40 square tube, 25x25 square tube, 18 gauge MS sheet with side ladder and bed of 16 Gauge CR sheet	14	Each		
627	Supplying and fixing of wall mounted foldable study table of size (0.60mx0.40m) using 19mm thick of MDF board / Prelaminated BSL water proof plywood	46	Each		

<i>Item. No.</i>	<i>Description</i>	<i>Qty</i>	<i>Unit</i>	<i>Rate exclusive of GST in figures and in words</i>	<i>Amount</i>
628	Supplying and delivery of Steel table of size 4'x2'x2'-6" using top 19mm thick of MDF board / Prelaminated BSL water proof plywood legs made up of 1"x1" square tube and top alround frame made up of 1"x1" square tube, two drawers using 18 gauge MS sheet with lock & key arrangements	1	Each		
629	Supplying and delivery of Plastic Chair with arm	47	Each		
630	Supply and fixing of 4'x3' Aluminium frame Notice Board	1	Each		
631	Supply and fixing of 3 seater Sofa set (Teak wood) with cushion	1	Each		

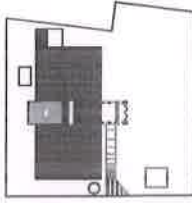
<i>Item. No.</i>	<i>Description</i>	<i>Qty</i>	<i>Unit</i>	<i>Rate exclusive of GST in figures and in words</i>	<i>Amount</i>
632	Supplying and delivery of Iron Table stand with press Holder, Foldable & Height Adjustable / Ironing Board with Multi function Ironing table / Ironing Board covers with foam pad	10	Each		
633	Supplying and delivery of Pillow (16"x24") filled with Recron	61	Each		
634	Supplying and delivery of Pillow cover (16"x24") using cotton fabric	122	Each		
635	Supplying and delivery of Bed sheet cover suitable size of single cot Mattresses	122	Each		
636	Supplying and fixing of 25mm dia 1mm thick, Stainless steel 304 Grade hollow tubes for the fixing of window curtains with ornamental brackets on either side	53.90	1 Rmt		

<i>Item. No.</i>	<i>Description</i>	<i>Qty</i>	<i>Unit</i>	<i>Rate exclusive of GST in figures and in words</i>	<i>Amount</i>
637	Construction of Percolation well / Rain water harvesting pit of 1.20m dia upto 2.50m depth with Brick masonry in C.M. 1:5	2	Each		
638	Supplying and fixing of Automatic Electrical water heater 5 star 15 lit capacity storage	22	Each		
639	Supplying and fixing of Drinking water fountain with cooler (stainless steel) capacity:80 litres	3	Each		
640	Providing, fixing pipe supports from columns / wall or suspenders from roof slab to suit various dia of pipes made out of GI / MS adjustable rods threaded for a sufficient length	50	Each		
641	<u>Computer, WIFI, LED TV, Printer, TV Dish</u> Supplying and fixing of 4 GB DD R4 RAM, 1 TB HDDI Intel core ie 4 GB, 1 TB, DOS Desktop (with Monitor) 19.5" HD screen, Keyboard and Mouse	1	Each		

<i>Item. No.</i>	<i>Description</i>	<i>Qty</i>	<i>Unit</i>	<i>Rate exclusive of GST in figures and in words</i>	<i>Amount</i>
642	Supplying and fixing of Indoor 802.11 AC wave 2 2x2:2 wifi access point with all mounting kit and PoE (Power over Ethernet) injector	7	Each		
643	Supplying and fixing of unarmoured LAN & CCTV cable CAT6	350.00	1 Rmt		
644	Supplying and fixing of 2 U wall mount rack & accessories	1	Each		
645	Supplying and fixing of 8 PORT POE LAN switch 10/100/1000 Mbps with necessary connection	2	Each		
647	Supplying and delivery of A4 All in one Printer (Scan/Copy/Xerox) Laserjet print copy scan, wifi printer, compact design, Reliable and fast printing	1	Each		

Item. No.	Description	Qty	Unit	Rate exclusive of GST in figures and in words	Amount
648	Supply, delivery and installation and fixing TV Dish HD Box with remote control	1	Each		
649	Supplying and fixing of Biometric with SSR Report (Self service Recorder)	1	Each		
650	Supplying and delivery of GC181 pack of 2, Dry Iron Box (Black) 1000 W	10	Each		
796	Two coat of Plastic emulsion paint including primer for outer wall surfaces	98.40	1 Sqm		

<i>Item. No.</i>	<i>Description</i>	<i>Qty</i>	<i>Unit</i>	<i>Rate exclusive of GST in figures and in words</i>	<i>Amount</i>
796.1	Painting the old walls with two coats of Plastic emulsion paint without primer and including thorough scrapping	1656.90	1 Sqm		
800.3	Clean removal of cement plaster from the existing wall surfaces	47.80	1 Sqm		
800.5	Clean removal of Floor finish and dadoing walls in cement mortar with Mosaic tiles / Glazed Tiles / Cuddapah slabs	74.50	1 Sqm		
800.6	Dismantling, Clearing away and carefully stacking materials useful for re-use for any thickness of walls One course of Pressed Tile Roof finish in Cement mortar	35.88	1 Sqm		
	TOTAL				
(Rupees					
)					



KEY PLAN

SCHEDULE OF JOINTS

Joint No.	Description	Joint Type	Joint Length
1	ALUMINIUM FRAMED DOOR WITH GLASS	DOOR	1000
2	ALUMINIUM FRAMED WINDOW WITH GLASS	WINDOW	1000
3	STEEL FRAMED DOOR WITH GLASS	DOOR	1000
4	STEEL FRAMED WINDOW WITH GLASS	WINDOW	1000
5	STEEL FRAMED DOOR WITH GLASS	DOOR	1000
6	STEEL FRAMED WINDOW WITH GLASS	WINDOW	1000
7	STEEL FRAMED DOOR WITH GLASS	DOOR	1000
8	STEEL FRAMED WINDOW WITH GLASS	WINDOW	1000
9	STEEL FRAMED DOOR WITH GLASS	DOOR	1000
10	STEEL FRAMED WINDOW WITH GLASS	WINDOW	1000

LEGENDS

- 100mm Thick Wall
- 150mm Thick Wall
- 100mm Thick Slab
- 100mm Thick Beam
- 100mm Thick Column
- 100mm Thick Foundation

NOTE

ALL DIMENSIONS ARE IN MILLIMETERS
DO NOT SCALE THE DRAWING
IN THE EVENT OF ANY DISCREPANCY OR DIFFERENCE BETWEEN
ARCHITECT DRAWINGS, STRUCTURAL DRAWINGS AND SITE CONDITIONS
ARCHITECT DRAWINGS SHALL PREVAIL.

PROJECT

TNIFVC - TAMILNADU INFRASTRUCTURE FUND
MANAGEMENT CORPORATION

PROJECT

WORKING WOMEN'S HOSTEL - TRUNELVELI

DRAWING STAGE

TENDER DRAWING

DESIGNED BY

SHREE KUMAR

CHECKED BY

SHREE KUMAR

SCALE

1:100

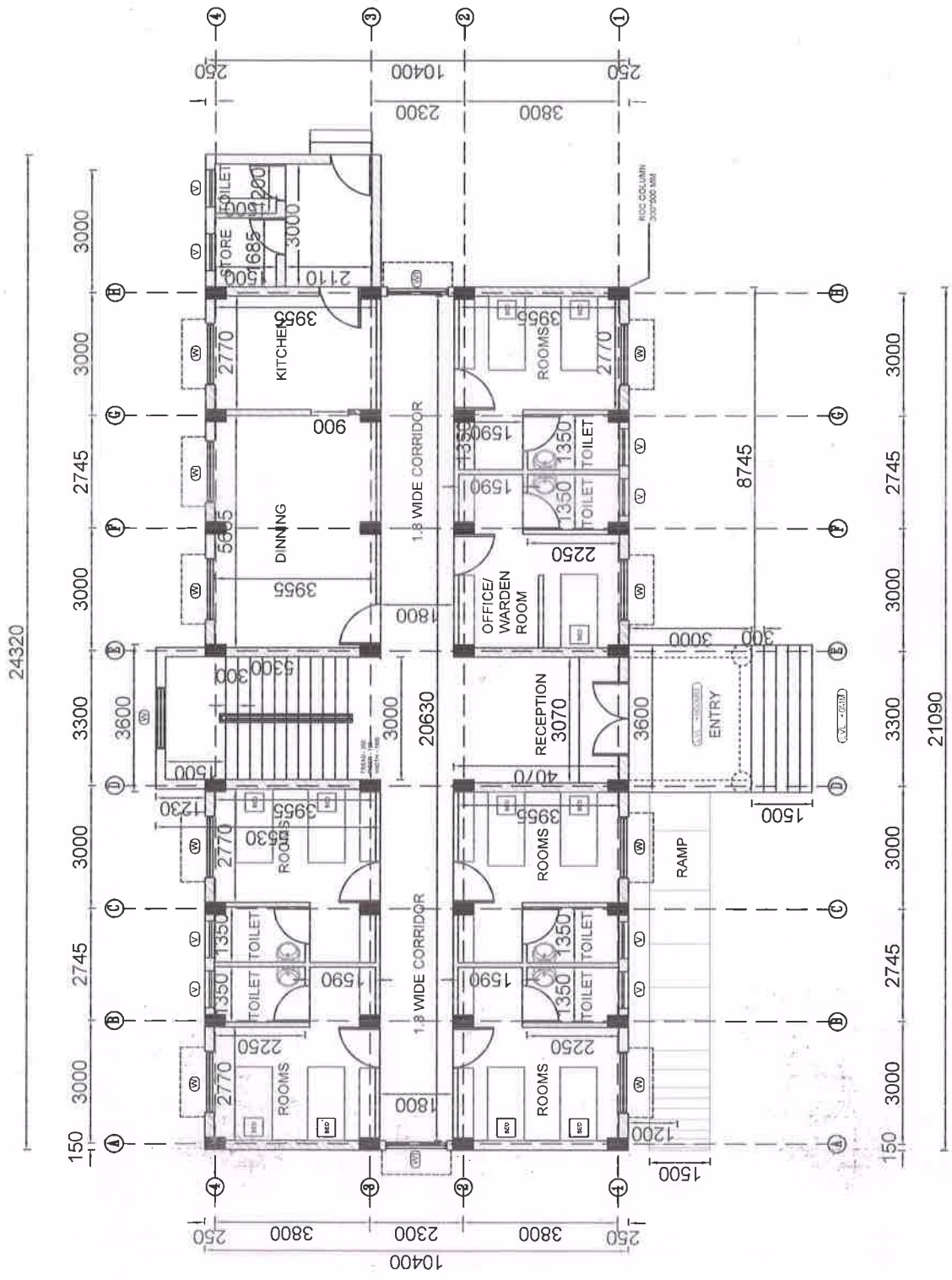
DATE

20.12.2020

GROUND FLOOR PLAN

GROUND FLOOR PLAN

GROUND FLOOR PLAN - 230.80 SQM
FIRST FLOOR PLAN - 223.50 SQM
SECOND FLOOR PLAN - 223.50 SQM
TOTAL AREA - 677.80 SQM



GROUND FLOOR PLAN

GROUND FLOOR PLAN - 230.80 SQM
FIRST FLOOR PLAN - 223.50 SQM
SECOND FLOOR PLAN - 223.50 SQM
TOTAL AREA - 677.80 SQM

CONTRACTOR

NOS. OF CORRECTIONS

SUPERINTENDING ENGINEER,
SOUTH CIRCLE,
TAMILNADU POLICE HOUSING CORPORATION LTD.
MADRASI-14

KEY PLAN

Sl. No.	Particulars	Quantity	Unit	Remarks
1	Ground Floor Plan	230.80	SQM	
2	First Floor Plan	223.50	SQM	
3	Second Floor Plan	223.50	SQM	
4	Total Area	677.80	SQM	

LEGENDS

2300mm TYP. WALL
1500mm TYP. WALL
FLOOR FINISH: MARBLE @ 20MM

AREA STATEMENT

GROUND FLOOR PLAN: 230.80 SQM
FIRST FLOOR PLAN: 223.50 SQM
SECOND FLOOR PLAN: 223.50 SQM
TOTAL AREA: 677.80 SQM

NOTES:
1. ALL DIMENSIONS ARE IN MILLIMETERS.
2. ALL DIMENSIONS TO BE O.M.S. AT SITE.
3. STRUT TO BE PROVIDED AS PER REQUIREMENT.
4. ALL DIMENSIONS TO BE O.M.S. AT SITE.
5. ARCHITECT DRAWINGS, STRUCTURAL DRAWINGS AND ELECTRICAL DRAWINGS.

DATE	NO.	REVISION	CHECKED

REFERENCE:

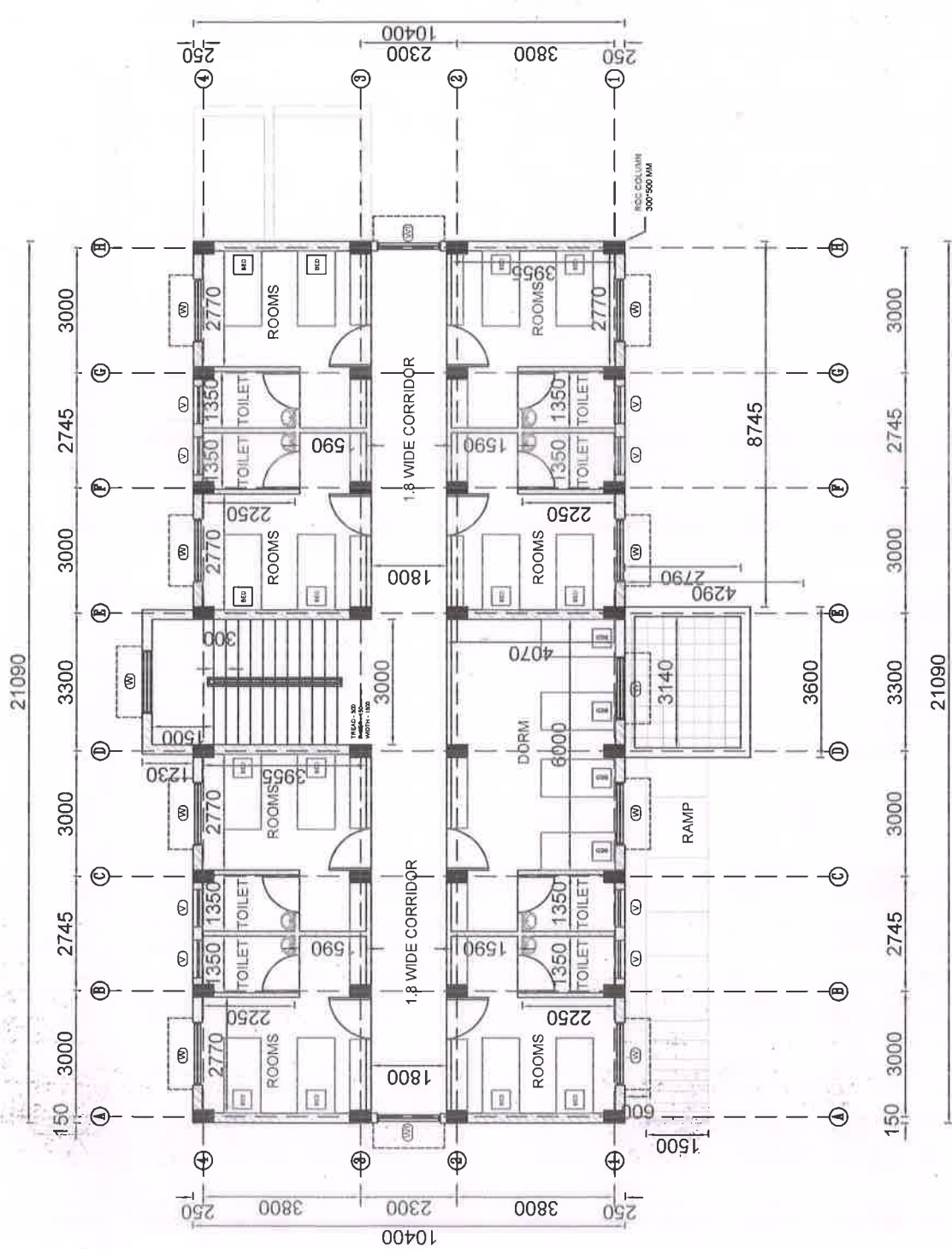
TNMFIC - TAMILNADU INFRASTRUCTURE FUND
MANAGEMENT CORPORATION

PROJECT:

WORKING WOMEN'S HOSTEL - TIRUNELVELI

DESIGNING FIRM:

CONTRACTOR: SUPERINTENDING ENGINEER,
SOUTH CIRCLE,
TAMILNADU POLICE HOUSING CORPORATION LTD.
MADURAI-14.



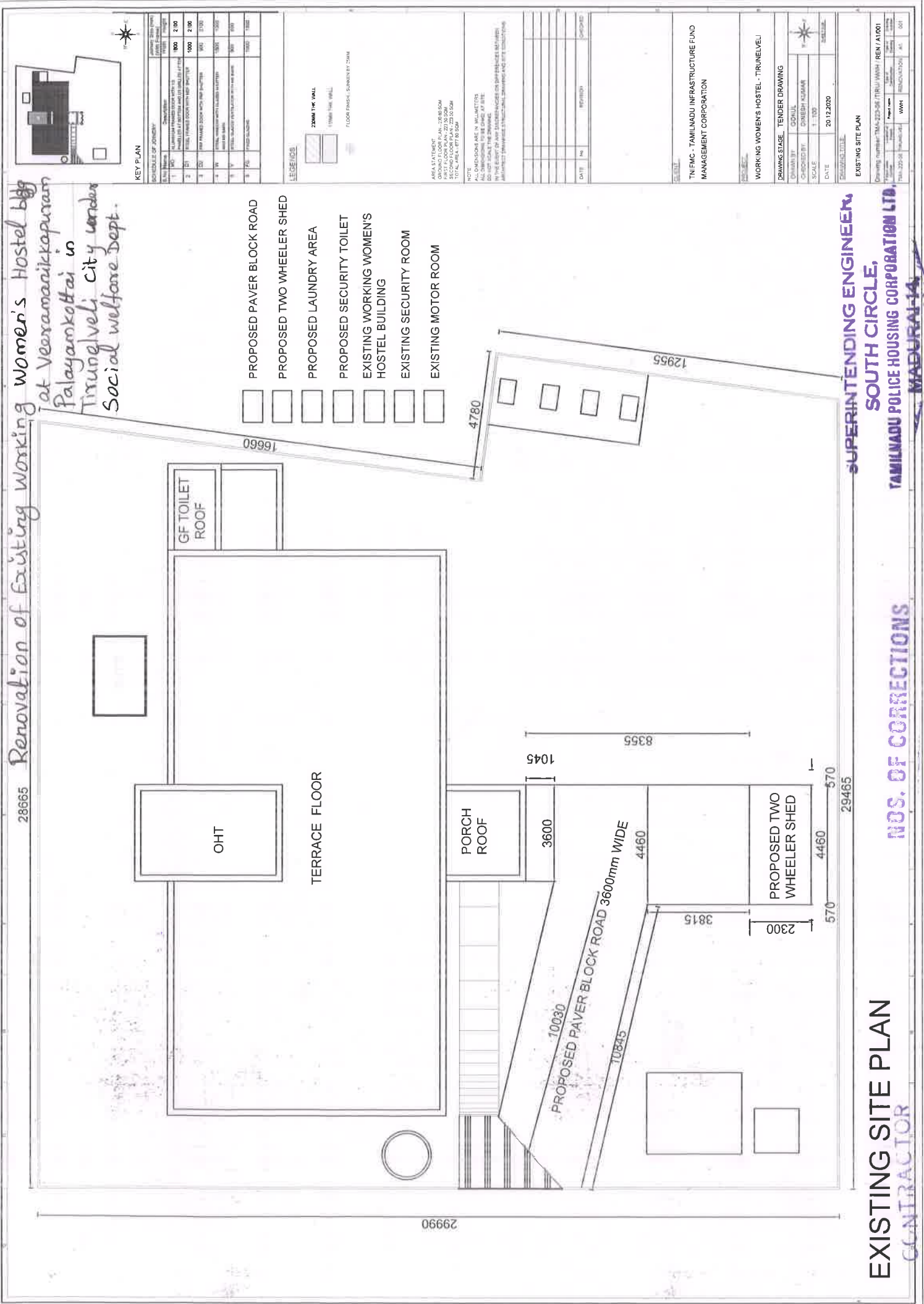
GROUND FLOOR PLAN - 230.80 SQM
FIRST FLOOR PLAN - 223.50 SQM
SECOND FLOOR PLAN - 223.50 SQM
TOTAL AREA - 677.80 SQM

TYPICAL FLOOR PLAN

NOS. OF CORRECTIONS

**SUPERINTENDING ENGINEER,
SOUTH CIRCLE,
TAMILNADU POLICE HOUSING CORPORATION LTD.
MADURAI-14.**

28665 Renovation of Existing Working women's Hostel bldg
at Veeramaniyakkapuram
Palayamkottai in
Tirunelveli city under
Social welfare Dept.



KEY PLAN

Sl. No.	Description	Quantity	Unit
1	1.0000	1000	2.00
2	2.0000	1000	2.00
3	3.0000	1000	2.00
4	4.0000	1000	2.00
5	5.0000	1000	2.00
6	6.0000	1000	2.00
7	7.0000	1000	2.00
8	8.0000	1000	2.00
9	9.0000	1000	2.00
10	10.0000	1000	2.00

LEGEND

Symbol	Description
[Symbol]	2300mm TYP. WALL
[Symbol]	FLOOR FINISH: SANDEN BT 23MM

NOTE:
ALL DIMENSIONS ARE IN MILLIMETERS
UNLESS OTHERWISE SPECIFIED
DO NOT SCALE THE DRAWING
IN THE EVENT OF ANY DISCREPANCIES OR DIFFERENCES BETWEEN
ARCHITECT DRAWINGS, STRUCTURAL DRAWINGS AND SITE CONDITIONS

DATE	BY	REVISION	DESCRIPTION

CLIENT
TNIFWC - TAMILNADU INFRASTRUCTURE FUND
MANAGEMENT CORPORATION

PROJECT
WORKING WOMEN'S HOSTEL - TRINELVELI

DRAWING STAGE - TENDER DRAWING

Drawn By	Checked By	Scale	Date
GOVIND	CHINESH KUMAR	1:100	20.12.2020

EXISTING SITE PLAN

Drawing Number	Scale	Revision	Rev. A/1001
TNA-225-06	1:100	1001	1001

EXISTING SITE PLAN
CONTRACTOR

NDS. OF CORRECTIONS

SUPERINTENDING ENGINEER,
SOUTH CIRCLE,
TAMILNADU POLICE HOUSING CORPORATION LTD,
MADURAI-14.