

TENDER CODING SHEET (RATE EXCLUSIVE OF GST TO BE FILLED UP BY THE TENDERER IN THIS CODING SHEET)					
NAME OF WORK : RENOVATION AND ADDITIONAL AMENITIES WORKS FOR THE EXISTING WORKING WOMEN'S HOSTEL BUILDING AT PERAMBALUR IN PERAMBALUR DISTRICT UNDER SOCIAL WELFARE DEPARTMENT					
<i>Item. No.</i>	<i>Description</i>	<i>Qty</i>	<i>Unit</i>	<i>Rate exclusive of GST in figures and in words</i>	<i>Amount</i>
1.1	Earth work excavation for foundation in all soils (including refilling) a. 0 to 2 mt.	49.60	1 Cum		
13.1	Filling with excavated earth	2.30	1 Cum		
24	Manufacturing & supply of steel windows (weight basis)	89.10	1 Kg		
30	Ellispattern flooring	18.00	1 Sqm		

<i>Item. No.</i>	<i>Description</i>	<i>Qty</i>	<i>Unit</i>	<i>Rate exclusive of GST in figures and in words</i>	<i>Amount</i>
39	Supplying and fixing of MS Grills in position	85.10	1 Kg		
41	Painting 2 coats - New "iron work"	81.90	1 Sqm		
47	Supplying and fixing of Alu. Towel rail 75 cm long	1	Each		
48	Supplying and fixing of 5 pin Coat stand	2	Each		
52	Supplying and laying of PVC water supply (ASTM) pipe a. 32 mm dia	45.00	1 Rmt		

<i>Item. No.</i>	<i>Description</i>	<i>Qty</i>	<i>Unit</i>	<i>Rate exclusive of GST in figures and in words</i>	<i>Amount</i>
	b. 25 mm dia	18.00	1 Rmt		
	c. 20 mm dia	3.80	1 Rmt		
53.3	Supplying and fixing of C.I. steps (5 Kg)	5	Each		
63	Supplying and fixing of 32mm dia PVC waste pipe and C.P couplings	1	Each		

<i>Item. No.</i>	<i>Description</i>	<i>Qty</i>	<i>Unit</i>	<i>Rate exclusive of GST in figures and in words</i>	<i>Amount</i>
69	Electrical arrangements Supplying and fixing of 15 Amps Power plug point	1	Each		
72	Supplying and fixing of Box type Fibre Fan hook	1	Each		
73.2	Supplying and fixing of 3 phase Distribution board with 4 way per phase 32A per way with neutral link	1	Each		
74	Charges for assembling and fixing of ceiling "Fan"	1	Each		

<i>Item. No.</i>	<i>Description</i>	<i>Qty</i>	<i>Unit</i>	<i>Rate exclusive of GST in figures and in words</i>	<i>Amount</i>
76	Supplying and fixing of 8 SWG G.I. wire	5.00	1 Rmt		
77.4	Supplying and fixing of 20mm dia PVC pipe for TV/Telephone line	14.00	1 Rmt		
86	Providing Pre-constructional Anti termite treatment	12.00	1 Sqm		
2.1.1	Annexure Supplying and filling the foundation and basement with gravel	14.70	1 Cum		
2.1.3	Supplying and filling the Foundation and Basement with Crushed stone sand	8.90	1 Cum		

<i>Item. No.</i>	<i>Description</i>	<i>Qty</i>	<i>Unit</i>	<i>Rate exclusive of GST in figures and in words</i>	<i>Amount</i>
2.1.6	Supplying and filling with Stone dust	12.70	1 Cum		
3.1.1	C.C.1:5:10 using 40mm size HBSJ for Foundation & Basement using crushed stone sand	10.20	1 Cum		
3.2.1	P.C.C. 1:2:4 using 20mm size HBSJ for Foundation & Basement and other similar works using crushed stone sand	3.10	1 Cum		
3.2.2	Providing Granolithic Floor finish of 40mm thick in P.C.C. 1:2:4 using 10 to 12mm gauge HBSJ including top rubbed smooth with Power trawel thread line	8.10	1 Sqm		
4.4.1	Standardized Concrete mix M20 Grade using crushed stone sand a. In Foundation and basement	10.90	1 Cum		

<i>Item. No.</i>	<i>Description</i>	<i>Qty</i>	<i>Unit</i>	<i>Rate exclusive of GST in figures and in words</i>	<i>Amount</i>
6.6.1	Brick work in C.M. 1:5 (F& B) using Kiln Burnt Country bricks of size 22 x 11 x 7 cm (8 $\frac{3}{4}$ " x 4 $\frac{1}{4}$ " x 2 $\frac{3}{4}$ ") using crushed stone sand	7.80	1 Cum		
8.4.1	Standardized Concrete mix M20 Grade using crushed stone sand a. In Ground Floor	0.70	1 Cum		
9.6.1	Brick work in C.M. 1:6 using Kiln Burnt Country bricks of size 22x11x7cm (8 $\frac{3}{4}$ " x 4 $\frac{1}{4}$ " x 2 $\frac{3}{4}$ ") using crushed stone sand a. In Ground Floor	7.40	1 Cum		
10.6.1	Brick partition work in C.M. 1:4 using Kiln Burnt Country bricks of size 22x11x7 cm (8 $\frac{3}{4}$ "x4 $\frac{1}{4}$ "x2 $\frac{3}{4}$ ") 110 mm tk (B.P.) using crushed stone sand a. In Foundation and Basement	13.00	1 Sqm		
	b. In Ground Floor	5.10	1 Sqm		

<i>Item. No.</i>	<i>Description</i>	<i>Qty</i>	<i>Unit</i>	<i>Rate exclusive of GST in figures and in words</i>	<i>Amount</i>
11.6.1	Brick work in C.M. 1:4 using Kiln Burnt Country bricks of size 22x11x7cm (8 ³ / ₄ " x 4 ¹ / ₄ " x 2 ³ / ₄ ") using crushed stone sand 70 mm tk (B.P.) a. In Ground Floor	2.60	1 Sqm		
14.2.3	Precast Cupboard slab 40mm tk in standardised concrete mix M20 Grade by using 3mm - 10mm HBGS Jelly using crushed stone sand 40MM Thick a. In Foundation & Basement	2.30	1 Sqm		
15.1.1	Cuddapah Slab 20mm tk. for cupboard slab / Similar works a. In Ground Floor	2.70	1 Sqm		
18.1	Formwork using M.S.Sheet a. For Column footings, plinth beam, Grade beam, Raftbeam, Raft slab etc.,	26.20	1 Sqm		

<i>Item. No.</i>	<i>Description</i>	<i>Qty</i>	<i>Unit</i>	<i>Rate exclusive of GST in figures and in words</i>	<i>Amount</i>
	b. Plain surfaces such as Roof slab, floor slab, Beams, lintels, lofts, sill slab, staircase, portico slab and other similar works	36.80	1 Sqm		
	c. For Square and rectangular columns and small quantities	16.60	1 Sqm		
	d. For Vertical walls	26.00	1 Sqm		
26.1	Flooring in C.C.1:5:10 using 40mm size HBSJ using crushed stone sand	0.70	1 Cum		
28.1	Floor plastering in C.M. 1:4, 20mm thick. using crushed stone sand	11.50	1 Sqm		

<i>Item. No.</i>	<i>Description</i>	<i>Qty</i>	<i>Unit</i>	<i>Rate exclusive of GST in figures and in words</i>	<i>Amount</i>
29.8.1	Supplying and fixing of Glazed tiles using Grout (Tile Joint Filler) using crushed stone sand	10.20	1 Sqm		
29.9.1	Supplying and laying of Floor ceramic tiles (Anti-skid) using Grout (Tile Joint Filler). using crushed stone sand	3.00	1 Sqm		
33.1	Plastering in C.M. 1:5, 12 mm tk. using crushed stone sand	126.30	1 Sqm		
34.1	Plastering in C.M. 1:4, 12 mm tk. using crushed stone sand	3.60	1 Sqm		
35.2	Spl. Ceiling plastering in C.M 1:3, 10 mm tk. using crushed stone sand	12.40	1 Sqm		

<i>Item. No.</i>	<i>Description</i>	<i>Qty</i>	<i>Unit</i>	<i>Rate exclusive of GST in figures and in words</i>	<i>Amount</i>
38.4.1	Two coat of Oil Bound Distemper over the primer coat of white cement	45.30	1 Sqm		
43.1	Supplying, Fabricating and fixing of Mild steel / RTS grills (without cement slurry wash) reinforcement for all sizes of rods	1.09	1 MT		
44.2.1	Rain water harvesting using defunct borewell and providing perforated cover slab in Standardised concrete mix M20 Grade by using 3mm-10mm HBGS Jelly using crushed stone sand a) Providing pit	1	Each		
	b) Augering 30cm dia	2.00	1 Rmt		
44.6	Supplying and fixing of PVC SWR 110mm dia with ISI mark type-A for rain water down fall pipe	4.50	1 Rmt		

<i>Item. No.</i>	<i>Description</i>	<i>Qty</i>	<i>Unit</i>	<i>Rate exclusive of GST in figures and in words</i>	<i>Amount</i>
47.1	Supplying and fixing of stainless steel (304 Grade) Towel Rail 60cm long and 20mm dia with ornamental Brackets	22	Set		
50.2.1	Providing precast Kerb stone in C.C. 1:3:6, 450x300x150 mm using crushed stone sand	79.10	1 Rmt		
52.3	<u>Internal water supply and fixing pipes and fittings</u> Supplying, laying, fixing and jointing the following CPVC pipes (Higher pressure rating with higher pipe thickness) standard dimension with necessary CPVC/GI specials a. 32 mm dia	216.00	1 Rmt		
	b. 25 mm dia	130.00	1 Rmt		
	c. 20 mm dia	98.40	1 Rmt		

<i>Item. No.</i>	<i>Description</i>	<i>Qty</i>	<i>Unit</i>	<i>Rate exclusive of GST in figures and in words</i>	<i>Amount</i>
52.3.1	<u>Internal water supply pipes Concealed work</u> Supplying, laying, fixing and jointing the following CPVC pipes (Higher pressure rating with higher pipe thickness) standard dimension with necessary CPVC/GI specials a. 20 mm dia	114.40	1 Rmt		
	b. 25 mm dia	99.00	1 Rmt		
53.4	Supplying and fixing of CI Manhole cover of size 60 x 60cm (50kg weight)	1	Each		
53.5	Supplying and fixing of Wash hand basin (white) of size 550 mm x 400 mm	1	Each		

<i>Item. No.</i>	<i>Description</i>	<i>Qty</i>	<i>Unit</i>	<i>Rate exclusive of GST in figures and in words</i>	<i>Amount</i>
54.1.1	Supplying and fixing of 15mm dia Half turn Brass core C.P. Tap (long body)	7	Each		
54.2.1	Supplying and fixing of 15mm dia Half turn Brass core C.P. Tap (Short body)	1	Each		
54.2.3	Supplying and fixing of Chromium plated Angle valve 15mm dia	22	Each		
54.2.6	Supplying and fixing of Brass Chromium plated Screw down Tap 15mm/12mm dia (Heavy type)	32	Each		
56.3.2	Supplying and fixing of Indian Water closet white glazed (Oriya type) of size 580 x 440mm with PVC SWR Grade 'P' or 'S' trap - in G.F. using crushed stone sand	1	Each		

<i>Item. No.</i>	<i>Description</i>	<i>Qty</i>	<i>Unit</i>	<i>Rate exclusive of GST in figures and in words</i>	<i>Amount</i>
58.3	Supplying and fixing of PVC SWR pipe (Soil line) with ISI mark - type 'B'. a. 110 mm dia.	2.50	1 Rmt		
	b. 75 mm dia	4.70	1 Rmt		
58.4	Supplying, Laying & Concealing the 50mm dia PVC (SWR) pipe with ISI mark type - 'B' with relevant specials.	1.50	1 Rmt		
59.5.2	Supplying and fixing of 150x100mm size stone ware Gully Trap using Brick jelly concrete 1:8:16 and using crushed stone sand	1	Each		
60.1	Supplying and fixing of PVC Nahani trap (4way/2way) using crushed stone sand	1	Each		

<i>Item. No.</i>	<i>Description</i>	<i>Qty</i>	<i>Unit</i>	<i>Rate exclusive of GST in figures and in words</i>	<i>Amount</i>
61.1.1	Supplying and fixing of UPVC Non Pressure Pipe of SN8 SDR 34 (S 16.5) as per IS 15328/2003 a) 110mm dia UPVC Non Pressure pipe	10.00	1 Rmt		
	b) 160mm dia UPVC Non Pressure pipe	50.00	1 Rmt		
64.1.2	Wiring with 1.5 sqmm PVC insulated single core multi strand fire retardant flexible copper cable with ISI mark confirming IS: 694:1990. (Open wiring) a. Light point with ceiling rose	8	Each Point		
	b. Light point without ceiling rose	2	Each Point		
	c. Calling bell point with Buzzer/Calling bell	1	Each Point		

<i>Item. No.</i>	<i>Description</i>	<i>Qty</i>	<i>Unit</i>	<i>Rate exclusive of GST in figures and in words</i>	<i>Amount</i>
65.1.2	Wiring with 1.5 sqmm PVC insulated single core multi strand fire retardant flexible copper cable with ISI mark confirming IS: 694:1990 for Fan point (Open wiring)	1	Each Point		
67.1	Wiring with 1.5 sqmm PVC insulated single core multi strand fire retardant flexible copper cable with ISI mark confirming IS: 694:1990 for 5 amps 5 pin plug socket point at Switch Board Itself.	2	Each Point		
68.2.2	Wiring with 1.5 sqmm PVC insulated single core multi strand fire retardant flexible copper cable with ISI mark confirming IS: 694:1990 for 5 amps 5 pin plug socket point at Convenient Places.(Open wiring)	2	Each Point		
69.1.1	Supplying and fixing of 16 amps 3 pin power plug socket with modular switch on a suitable Modular Box	31	Each		
69.1.2	Supplying and fixing of 6A 3 pin and 2 pin combined flush type wall socket with 6A flush type switch 6 amps Modular type	16	Each		

<i>Item. No.</i>	<i>Description</i>	<i>Qty</i>	<i>Unit</i>	<i>Rate exclusive of GST in figures and in words</i>	<i>Amount</i>
75.1.2	Supplying and delivery of fan with electronic dimmer with ISI mark a) 48" (1200mm) sweep	8	Each		
75.1.4	Supplying and fixing of Wall mounting Fan 300mm sweep	16	Each		
77.5.1	Run off 2 Wires of 1.5 sqmm PVC insulated single core multi strand fire retardant flexible copper cable with ISI mark confirming IS: 694:1990 (Open Wiring)	208.00	1 Rmt		
77.6.1	Run off 2 Wires of 4 sqmm PVC insulated single core multi strand fire retardant flexible copper cable with ISI mark confirming IS: 694:1990 (Open Wiring)	26.00	1 Rmt		

<i>Item. No.</i>	<i>Description</i>	<i>Qty</i>	<i>Unit</i>	<i>Rate exclusive of GST in figures and in words</i>	<i>Amount</i>
77.7.1	Run off 2 Wires of 2.5 sqmm PVC insulated single core multi strand fire retardant flexible copper cable with ISI mark confirming IS: 694:1990 (Open Wiring)	252.00	1 Rmt		
86.1	Providing Cupboard shutter with frame using termite / water proof plywood of 19mm thick over which laminated sheet of 0.80mm thick fixed inside the shutter and 1mm thick fixed in the outside of the shutter	56.00	1 Sqm		
87.1	Supplying and fixing of Three Phase ELCB/RCCB	1	Each		
97.1.1	Providing and fixing full height solid partition made of Aluminium extruded sections, the frame works shall be covered with single layer 8mm thick BWR grade plywood and finished with 1mm thick lamination with a door size of 1.00x2.10m	8.60	1 Sqm		

<i>Item. No.</i>	<i>Description</i>	<i>Qty</i>	<i>Unit</i>	<i>Rate exclusive of GST in figures and in words</i>	<i>Amount</i>
100	Supplying and fixing of 9 watts LED Bulb	11	Each		
101	Supplying and fixing of 25 watts LED bulb with street light fittings	2	Each		
102	Supplying and fixing of 4'18 watts crystal LED tube light fittings	24	Each		
103	Supplying and fixing of Bulk Head fitting suitable for 12 watts LED bulb	2	Each		

<i>Item. No.</i>	<i>Description</i>	<i>Qty</i>	<i>Unit</i>	<i>Rate exclusive of GST in figures and in words</i>	<i>Amount</i>
104	Supplying and fixing of 12 watts LED bulb for bulk head fittings	2	Each		
112.1	Supplying and fixing of 225mm dia sweep AC Exhaust Fan	1	Each		
122	Supplying and fixing of following dia GM Gate valve (Heavy Duty) a) 25 mm dia GM Gate valve	4	Each		
	b) 32 mm dia GM Gate valve	5	Each		

<i>Item. No.</i>	<i>Description</i>	<i>Qty</i>	<i>Unit</i>	<i>Rate exclusive of GST in figures and in words</i>	<i>Amount</i>
122.1	Providing and fixing of approved make Automatic Air release valve 15mm dia UPVC Ball valve	4	Each		
124	Supplying and fixing of 25mm dia GI pipes 'B' class in position for EB service connection	3.00	1 Rmt		
142	Supplying, delivery and fixing of 83mm tk rubber moulded hydraulic pressed paver block including conveyance charges, laying of 83mm thick paver block	158.00	1 Sqm		
165	Supplying and fixing in position of colour Galvanium sheet roof 0.47mm thick	67.90	1 Sqm		

<i>Item. No.</i>	<i>Description</i>	<i>Qty</i>	<i>Unit</i>	<i>Rate exclusive of GST in figures and in words</i>	<i>Amount</i>
344.2	Supplying and fixing of Bevelled Edge Mirror of size 500x400x5.5mm	1	Each		
344.3	Supplying and fixing of PVC / Fibre Glass Framed 5.5mm thick Mirror of size 600mm x 450mm, Shelf type with Hard Board Backing	23	Each		
379.5.1	Supplying and laying of Granite tiles flooring (Super fine polished with machine cut edges) of size 2'x1', 10mm tk (Jet Black) over cement plastering in CM 1:3 20mm thick using crushed stone sand	3.30	1 Sqm		
544	Supplying and fixing of smoke control automatic Sanitary napkin disposal machine (disposal capacity 25 Nos/day)	1	Each		

<i>Item. No.</i>	<i>Description</i>	<i>Qty</i>	<i>Unit</i>	<i>Rate exclusive of GST in figures and in words</i>	<i>Amount</i>
563.5	Supplying fabrication and fixing in position of mild steel angle truss including cost of materials and labour charges	909.77	1 Kg		
568	<u>5 KVA Inverter UPS Inverter Panel</u> Supplying and installation of UPS Inverter panel 5 KVA static UPS without Battery 48V static UPS to support Computer load & Non Computer load. Cost does not include batteries and battery stand requires 4 batteries only	1	Each		
568.1	Supplying and installation of Battery pack non SMF - 100 AH inverter type battery cost of SF stand master 100 AH flat inverter batteries capable of deep discharging for longer back up time	6	Each		
568.2	Supplying and fixing of Battery stand for 100 AH cost of a standard battery stand for housing 100 AH SMF batteries, the cost is including battery terminal and inter linking cables	1	Each		

<i>Item. No.</i>	<i>Description</i>	<i>Qty</i>	<i>Unit</i>	<i>Rate exclusive of GST in figures and in words</i>	<i>Amount</i>
584	<u>Fire Extinguisher</u> Supply and fixing of water CO ₂ stored pressure type 9 litres capacity Fire extinguisher as per New IS 15683 complete	1	Each		
585	Supply and fixing of stored pressure ABC (Mono Ammonium Phosphate) powder type Fire Extinguisher of 6 Kg capacity as per IS:15683	4	Each		
597	<u>CCTV WORKS</u> Supply and installation of 2 Mega Pix Bullet Network camera 3.6mm fixed Lens (2.80mm optional) smart IR upto 30m IR Distance (outdoor camera)	5	Each		
598	Supply and installtion of Network Video Recorder for CCTV 16 channel - 2 SATA (2 Nos. Hard disk)	1	Each		

<i>Item. No.</i>	<i>Description</i>	<i>Qty</i>	<i>Unit</i>	<i>Rate exclusive of GST in figures and in words</i>	<i>Amount</i>
599	Supply and installation of Network Switch manageable L2 PoE switch, 24 Port, 10/100/1000, 2 SFP Ports with support for auto VLANS and support features like IP4/IP6, QoS, advanced security management, POE management along with 4U Rack should support 802.3 AF (802.3 at Type 1)	1	Each		
600	Supply and installation of 2 TB Hard Disk for the above NVR for extended recoding	1	Each		
601	Supply and installation of surface mounted 4 U metal Rack with Lock & Key arrangements	1	Each		
602	Supply and laying of HDMI cable 5 meters	1	Each		

<i>Item. No.</i>	<i>Description</i>	<i>Qty</i>	<i>Unit</i>	<i>Rate exclusive of GST in figures and in words</i>	<i>Amount</i>
603	Supply and fixing of Weather proof Camera Junction Box of size 4"x4" for out door cameras	5	Each		
604	Supply and installation of Unarmoured LAN & CCTV cable CAT 6	350.00	1 Rmt		
605	Supply and fixing of conduit pipe 25mm(1") (16 gauge)	532.00	1 Rmt		
606	Installation Testing and Commissioning of whole CCTV system with proper handing over & with proper documentation	1	Job		

<i>Item. No.</i>	<i>Description</i>	<i>Qty</i>	<i>Unit</i>	<i>Rate exclusive of GST in figures and in words</i>	<i>Amount</i>
609	Supplying, delivery and installation of 32" LED HD Ready Smart LED TV with multiple use commercial LED TV including cost of stabilizer	1	Each		
614	Providing and fixing the fly proof Velcro Mosquito Net	79.00	1 Sqm		
615	Supplying and fixing of Polyester cotton (Polyester 65% & Cotton 35%) Jaquar cloth with 260 GSM curtain cloth 48" width french 3 Folded fleet type stitching of approved colour	62.00	1 Sqm		
624	Supplying and fixing of Polycarbonate sheet 6mm thick in position with necessary fittings	11.00	1 Sqm		

<i>Item. No.</i>	<i>Description</i>	<i>Qty</i>	<i>Unit</i>	<i>Rate exclusive of GST in figures and in words</i>	<i>Amount</i>
625	Supplying and delivery of Mattress of size 75"x36"x4" with primary material of Foam and coir and quilt, type-sandwich, Bed size-Single	62	Each		
626	Providing and fixing for the paint coated mild steel double decker bunk bed of size (0.91mx1.98m) using MS tube size 40x40 square tube, 25x25 square tube, 18 gauge MS sheet with side ladder and bed of 16 Gauge CR sheet	16	Each		
627	Supplying and fixing of wall mounted foldable study table of size (0.60mx0.40m) using 19mm thick of MDF board / Prelaminated BSL water proof plywood	46	Each		
628	Supplying and delivery of Steel table of size 4'x2'x2'-6" using top 19mm thick of MDF board / Prelaminated BSL water proof plywood legs made up of 1"x1" square tube and top alround frame made up of 1"x1" square tube, two drawers using 18 gauge MS sheet with lock & key arrangements	3	Each		

<i>Item. No.</i>	<i>Description</i>	<i>Qty</i>	<i>Unit</i>	<i>Rate exclusive of GST in figures and in words</i>	<i>Amount</i>
629	Supplying and delivery of Plastic Chair with arm	49	Each		
630	Supply and fixing of 4'x3' Aluminium frame Notice Board	1	Each		
631.1	Supplying and delivery of 3 seater stainless steel (304 grade) Chair	1	Each		
632	Supplying and delivery of Iron Table stand with press Holder, Foldable & Height Adjustable / Ironing Board with Multi function Ironing table / Ironing Board covers with foam pad	10	Each		

<i>Item. No.</i>	<i>Description</i>	<i>Qty</i>	<i>Unit</i>	<i>Rate exclusive of GST in figures and in words</i>	<i>Amount</i>
633	Supplying and delivery of Pillow (16"x24") filled with Recron	62	Each		
634	Supplying and delivery of Pillow cover (16"x24") using cotton fabric	122	Each		
635	Supplying and delivery of Bed sheet cover suitable size of single cot Mattresses	122	Each		
636	Supplying and fixing of 25mm dia 1mm thick, Stainless steel 304 Grade hollow tubes for the fixing of window curtains with ornamental brackets on either side	40.00	1 Rmt		
638	Supplying and fixing of Automatic Electrical water heater 5 star 15 lit capacity storage	22	Each		

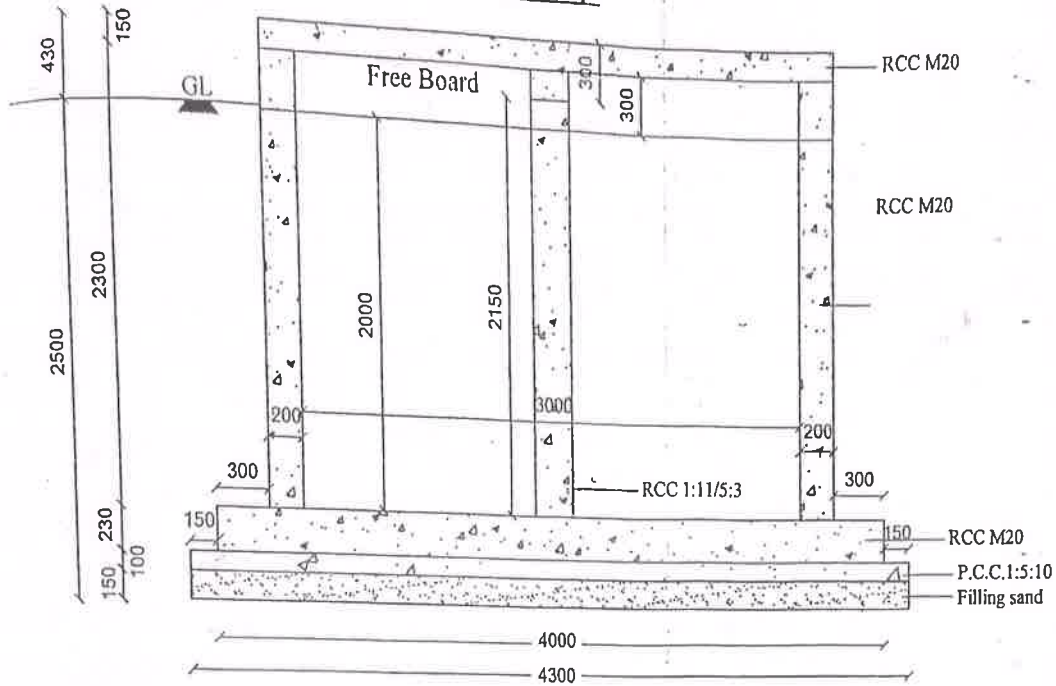
<i>Item. No.</i>	<i>Description</i>	<i>Qty</i>	<i>Unit</i>	<i>Rate exclusive of GST in figures and in words</i>	<i>Amount</i>
639	Supplying and fixing of Drinking water fountain with cooler (stainless steel) capacity:80 litres	2	Each		
640	Providing, fixing pipe supports from columns / wall or suspenders from roof slab to suit various dia of pipes made out of GI / MS adjustable rods threaded for a sufficient length	50	Each		
641	<u>Computer, WIFI, LED TV, Printer, TV Dish</u> Supplying and fixing of 4 GB DD R4 RAM, 1 TB HDDI Intel core ie 4 GB, 1 TB, DOS Desktop (with Monitor) 19.5" HD screen, Keyboard and Mouse	1	Each		
642	Supplying and fixing of Indoor 802.11 AC wave 2 2x2:2 wifi access point with all mounting kit and PoE (Power over Ethernet) injector	7	Each		
643	Supplying and fixing of unarmoured LAN & CCTV cable CAT6	350.00	1 Rmt		

<i>Item. No.</i>	<i>Description</i>	<i>Qty</i>	<i>Unit</i>	<i>Rate exclusive of GST in figures and in words</i>	<i>Amount</i>
644	Supplying and fixing of 2 U wall mount rack & accessories	1	Each		
645	Supplying and fixing of 8 PORT PoE LAN switch 10/100/1000 Mbps with necessary connection	2	Each		
646	Supplying, delivery and installation of 43" HD ready smart LED TV with Multiple use commercial LED TV including cost of stabilizer	1	Each		
647	Supplying and delivery of A4 All in one Printer (Scan/Copy/Xerox) Laserjet print copy scan, wifi printer, compact design, Reliable and fast printing	1	Each		
648	Supply, delivery and installation and fixing TV Dish HD Box with remote control	1	Each		

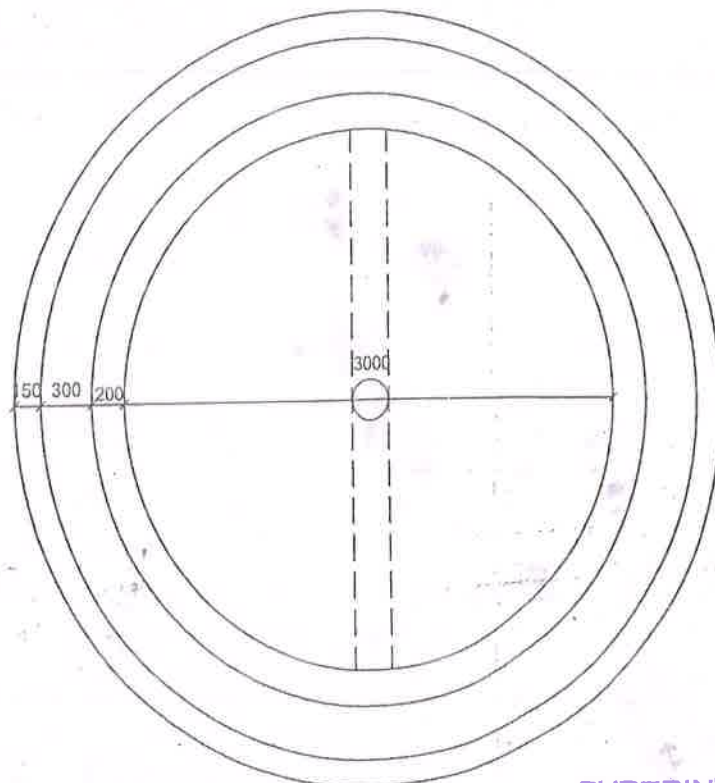
<i>Item. No.</i>	<i>Description</i>	<i>Qty</i>	<i>Unit</i>	<i>Rate exclusive of GST in figures and in words</i>	<i>Amount</i>
649	Supplying and fixing of Biometric with SSR Report (Self service Recorder)	1	Each		
650	Supplying and delivery of GC181 pack of 2, Dry Iron Box (Black) 1000 W	10	Each		
796	Two coat of Plastic emulsion paint including primer for outer wall surfaces	52.20	1 Sqm		
796.1	Painting the old Internal / External walls with two coats of Plastic emulsion paint without primer and including thorough scrapping	2997.40	1 Sqm		

<i>Item. No.</i>	<i>Description</i>	<i>Qty</i>	<i>Unit</i>	<i>Rate exclusive of GST in figures and in words</i>	<i>Amount</i>
796.2	Painting the old ceiling with one coat of Plastic emulsion paint without primer and including thorough scrapping	620.00	1 Sqm		
	TOTAL				
(Rupees					
)					

Sump



Section

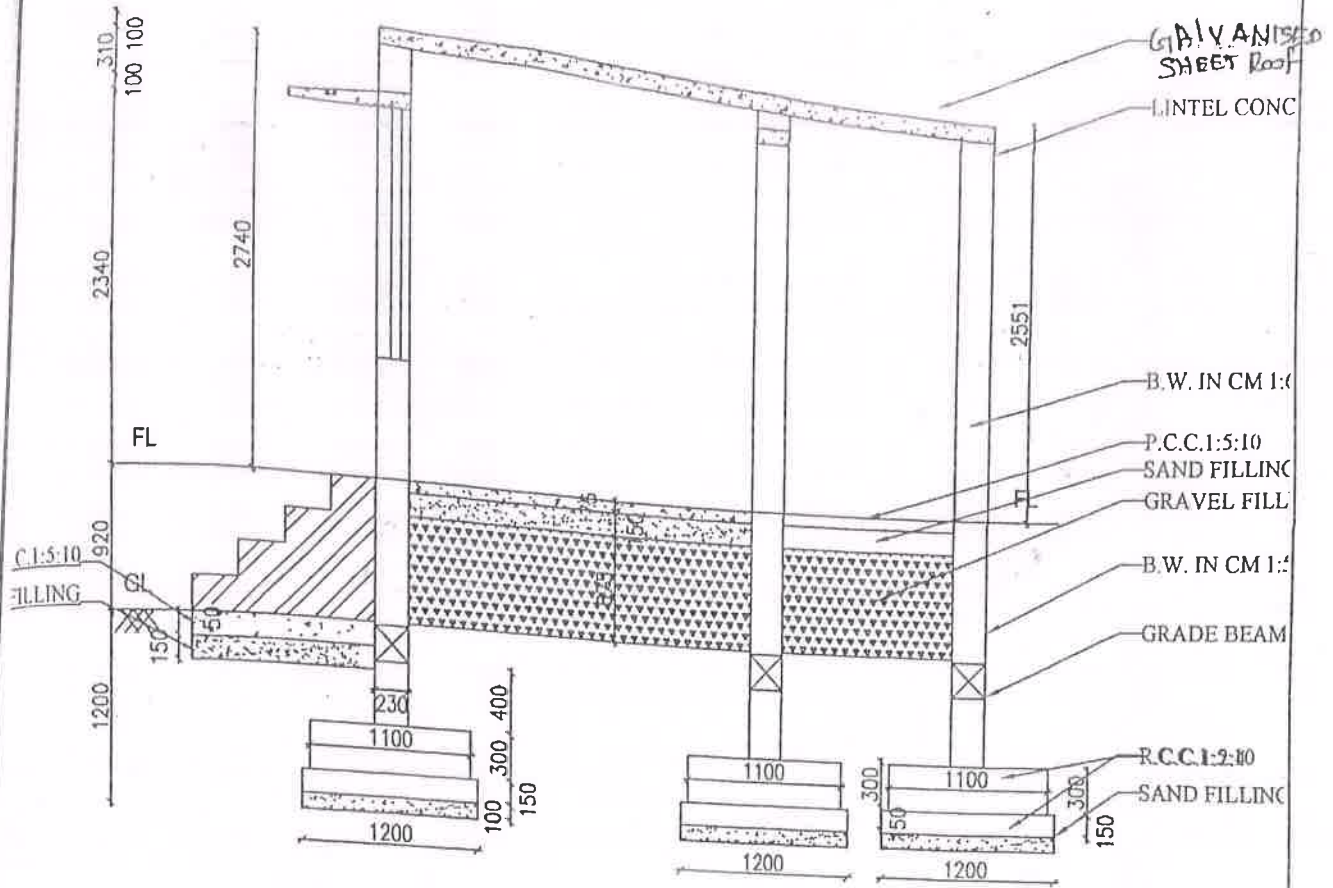


SUPERINTENDING ENGINEER,
SOUTH CIRCLE,
TAMILNADU POLICE HOUSING CORPORATION LTD,
MADURAI-14.

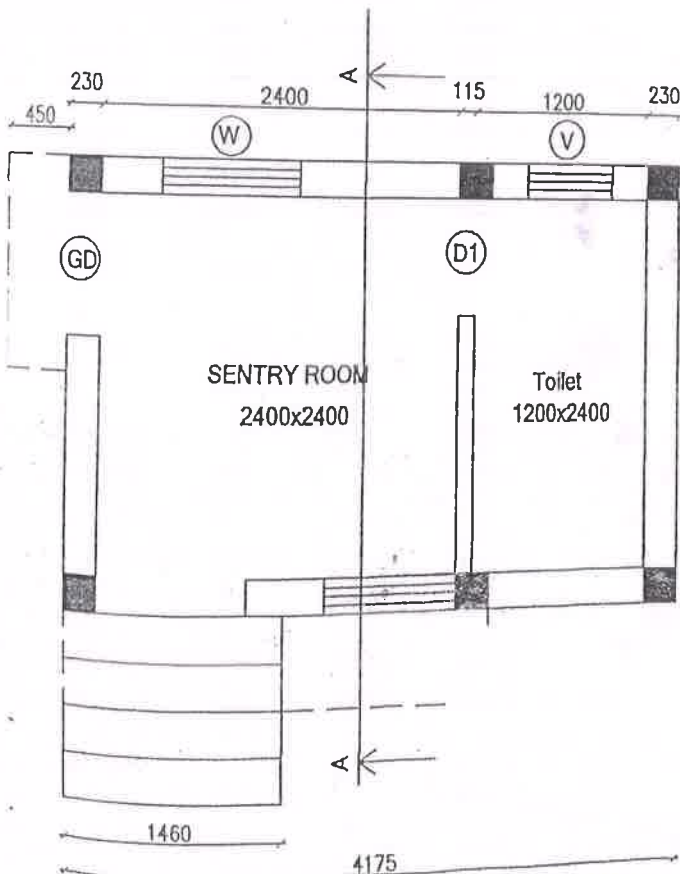
CONTRACTOR

NOS. OF CORRECTIONS

PROPOSED SENTRY ROOM



SECTION ON A-A



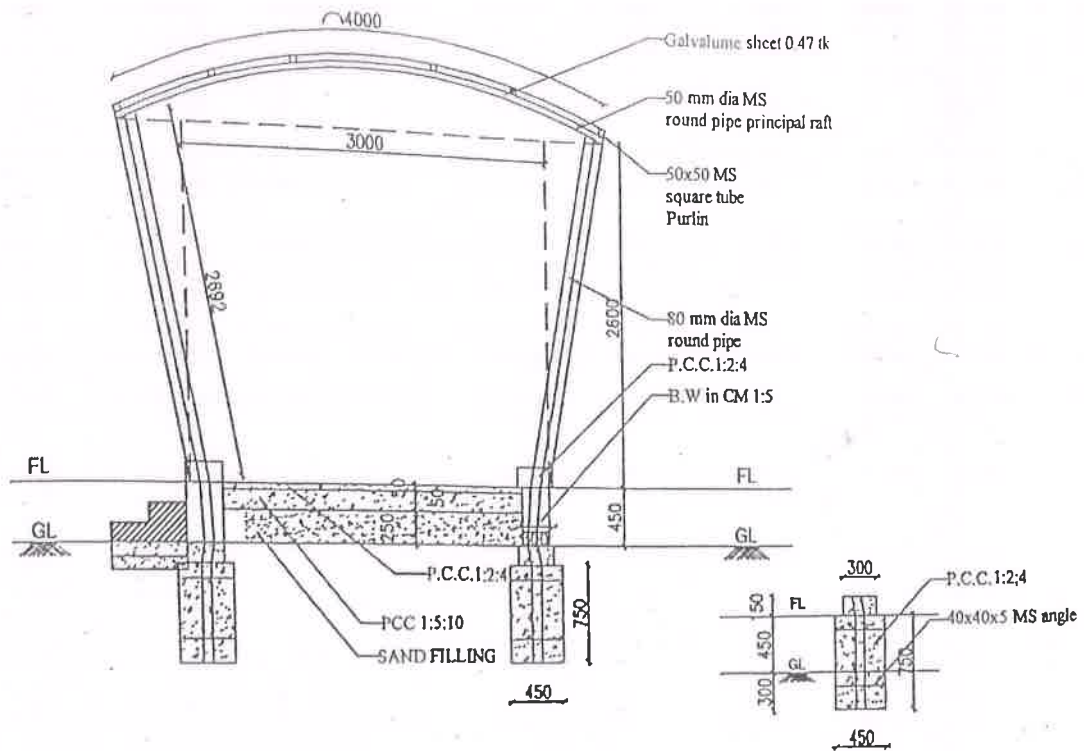
REFERENCE:
GD - 1.00X2.10
W - 0.90X1.35
V - 0.90X0.60

SUPERINTENDING ENGINEER,
SOUTH CIRCLE,
TAMILNADU POLICE HOUSING CORPORATION LTD.,
MADURAI-14.

CONTRACTOR PLAN

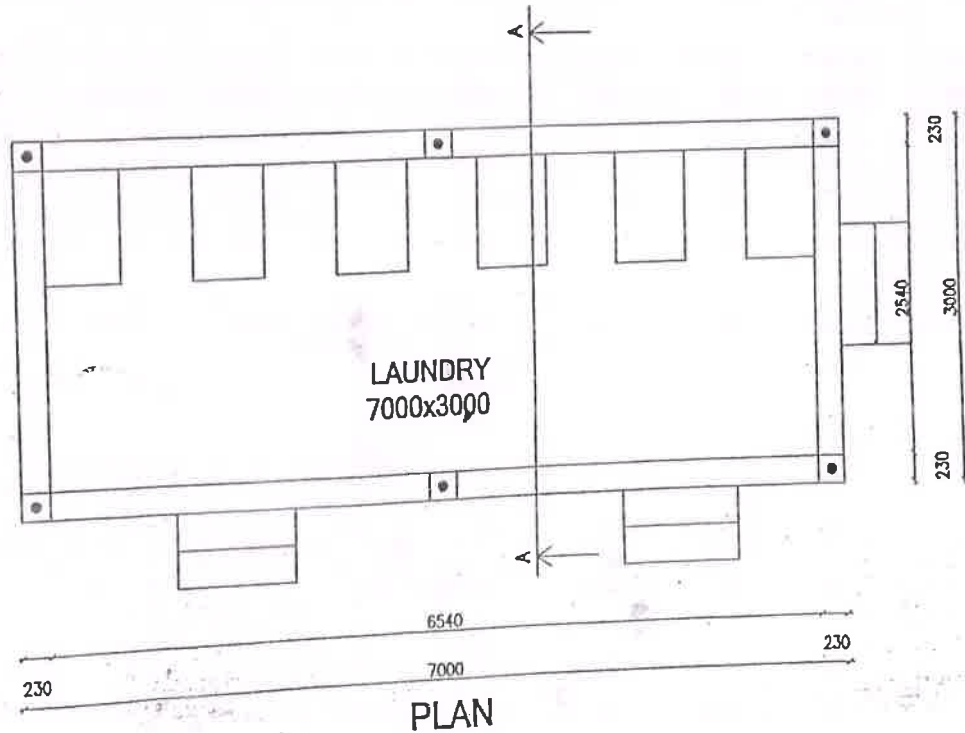
NOS. OF CORRECTIONS

PROPOSED LAUNDRY



SECTION ON A-A

MS PIPE FOOTING



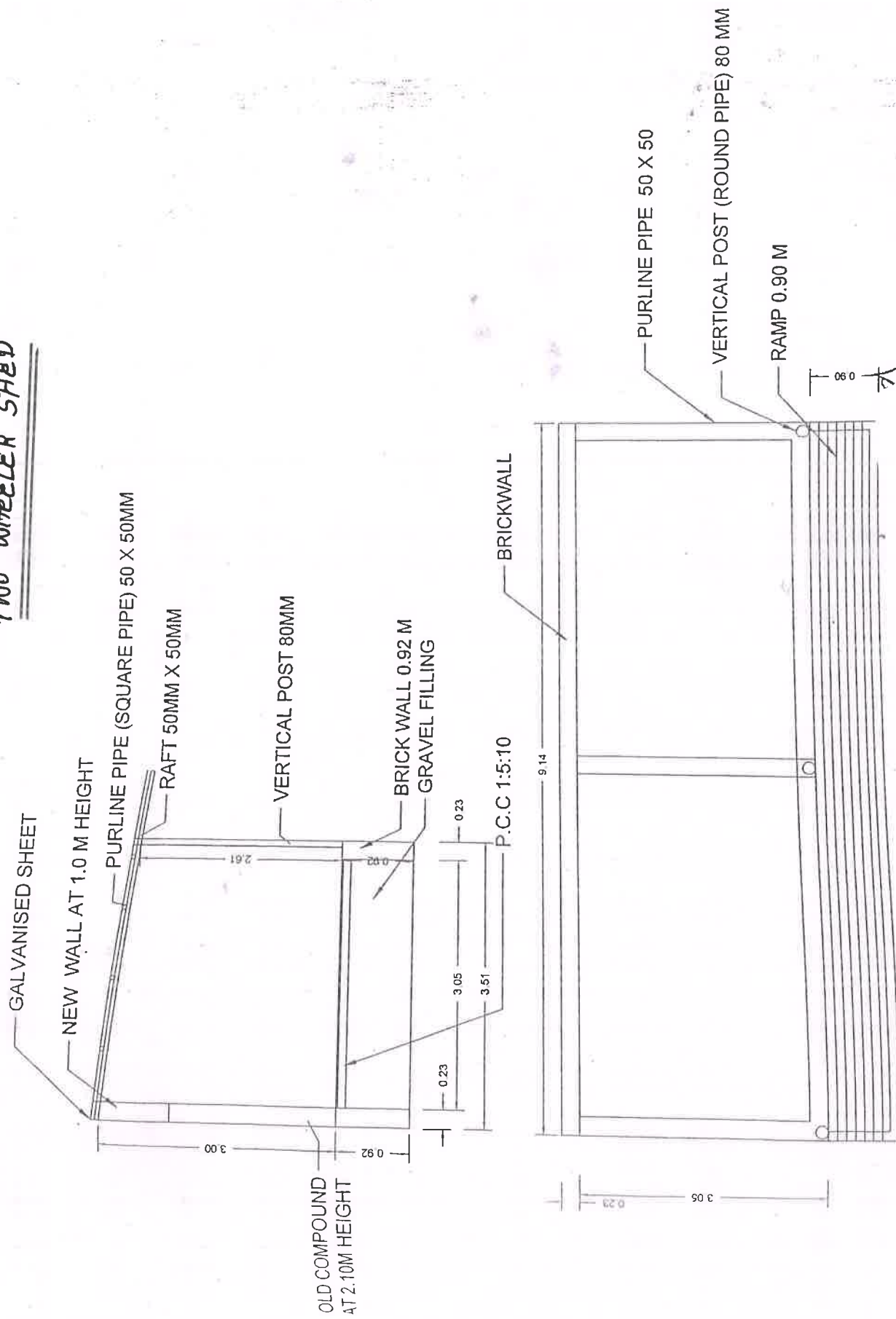
PLAN

CONTRACTOR

NOS. OF CORRECTIONS

SUPERINTENDING ENGINEER,
SOUTH CIRCLE,
TAMILNADU POLICE HOUSING CORPORATION LTD.,
MADURAI-14.

TWO WHEELER SHED



CONTRACTOR

NO. OF CONNECTION

SUPERINTENDING ENGINEER,
SOUTH CIRCLE,
TAMILNADU POLICE HOUSING CORPORATION LTD.,
MADURAI-14.



GROUND FLOOR PLAN

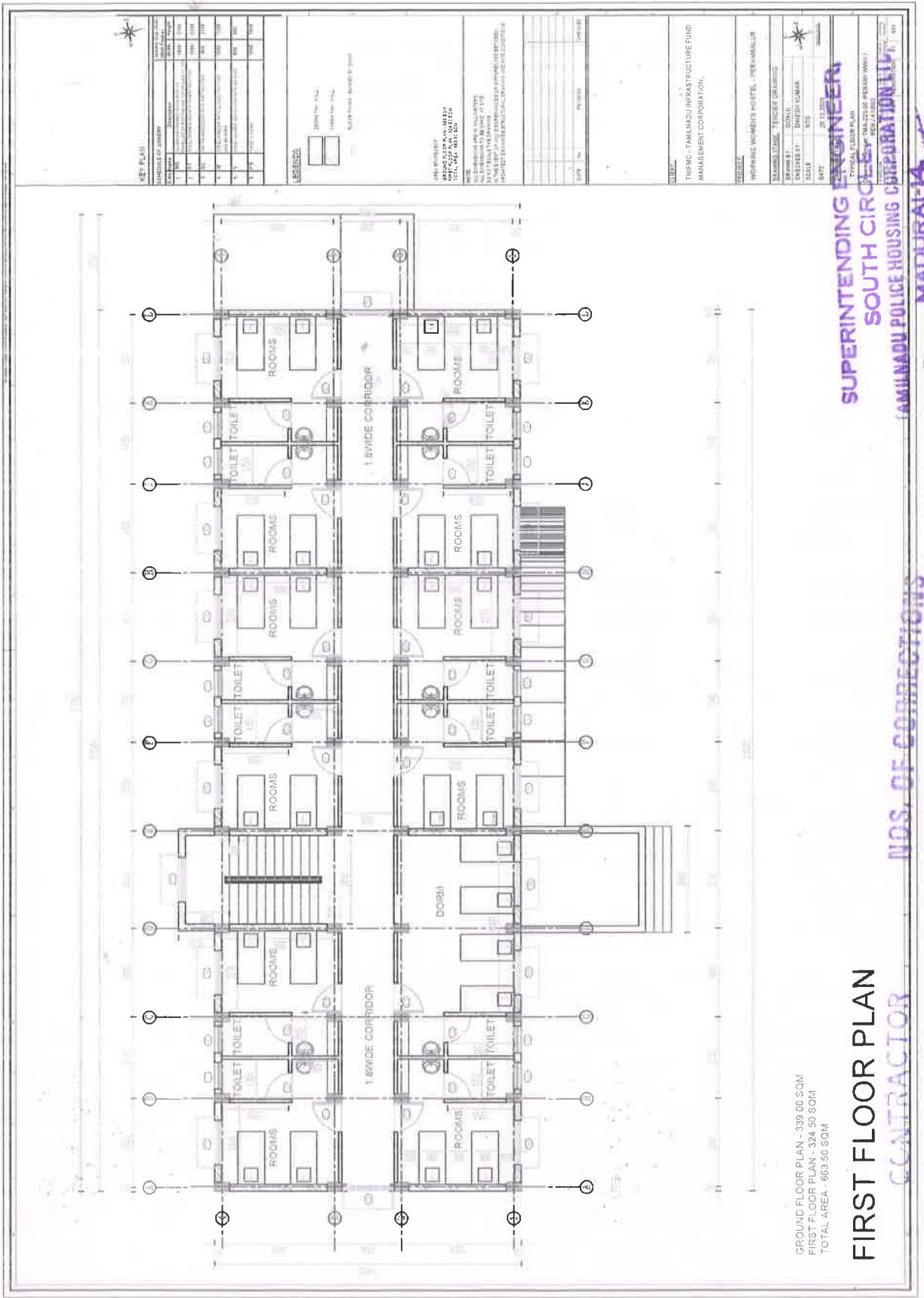
SUPERINTENDING ENGINEER,
DISTRICT ENGINEER,
BEN / A / SSC

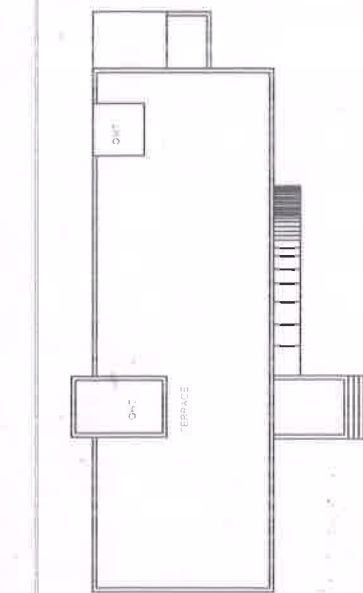
MODS. OF CORRECTIONS

SOUTH CIRCLE
CAMIL NAGUI POLICE-HOUSING COOPERATION

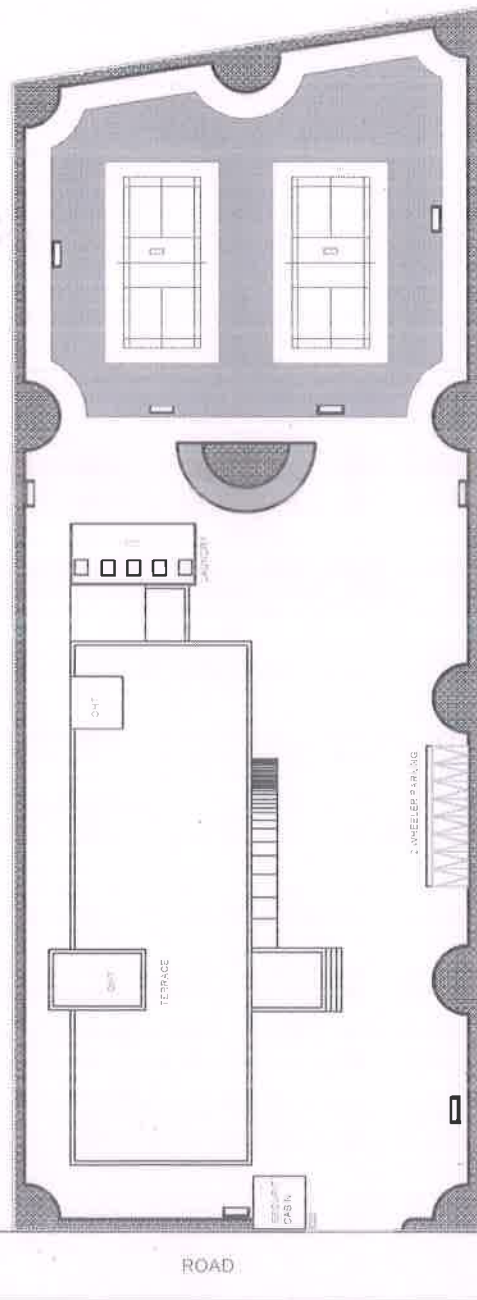
مجلس شورای اسلامی

MADURAI-14.





EXISTING SITE PLAN



PROPOSED SITE PLAN

[illegible]

END

1. ☐ 2. ☐ 3. ☐ 4. ☐ 5. ☐ 6. ☐ 7. ☐ 8. ☐ 9. ☐ 10. ☐ 11. ☐ 12. ☐ 13. ☐ 14. ☐ 15. ☐ 16. ☐ 17. ☐ 18. ☐ 19. ☐ 20. ☐ 21. ☐ 22. ☐ 23. ☐ 24. ☐ 25. ☐ 26. ☐ 27. ☐ 28. ☐ 29. ☐ 30. ☐ 31. ☐ 32. ☐ 33. ☐ 34. ☐ 35. ☐ 36. ☐ 37. ☐ 38. ☐ 39. ☐ 40. ☐ 41. ☐ 42. ☐ 43. ☐ 44. ☐ 45. ☐ 46. ☐ 47. ☐ 48. ☐ 49. ☐ 50. ☐ 51. ☐ 52. ☐ 53. ☐ 54. ☐ 55. ☐ 56. ☐ 57. ☐ 58. ☐ 59. ☐ 60. ☐ 61. ☐ 62. ☐ 63. ☐ 64. ☐ 65. ☐ 66. ☐ 67. ☐ 68. ☐ 69. ☐ 70. ☐ 71. ☐ 72. ☐ 73. ☐ 74. ☐ 75. ☐ 76. ☐ 77. ☐ 78. ☐ 79. ☐ 80. ☐ 81. ☐ 82. ☐ 83. ☐ 84. ☐ 85. ☐ 86. ☐ 87. ☐ 88. ☐ 89. ☐ 90. ☐ 91. ☐ 92. ☐ 93. ☐ 94. ☐ 95. ☐ 96. ☐ 97. ☐ 98. ☐ 99. ☐ 100. ☐

026 08 99 = 2687110
026 08 99 = 32451881
026 08 99 = 32451881
026 08 99 = 32451881

© 1997 by The McGraw-Hill Companies, Inc. All rights reserved. Printed in the United States of America. This publication is protected by copyright. Any unauthorized reproduction or distribution of this publication without the written permission of The McGraw-Hill Companies, Inc., is prohibited. For more information, contact The McGraw-Hill Companies, Inc., 1221 Avenue of the Americas, New York, NY 10020-1346.

[illegible][illegible]TIFMC - TAMILNADU INFRASTRUCTURE FUNDMANAGEMENT CORPORATION

ИЗДАТЕЛЬСТВО «НАУКА» МОСКВА

PROJECT NO.	DATE
PROJECT NAME	DATE
PROJECT LOCATION	DATE
PROJECT DESCRIPTION	DATE
PROJECT DRAWING	DATE

DATE	20 12 2020

1-800-368-5848
 www.1-800-368-5848

Year	Rate	Number of cases	MMWR	Fig. 1
1990	1.0	10	10	10
1991	1.0	10	10	10
1992	1.0	10	10	10
1993	1.0	10	10	10
1994	1.0	10	10	10
1995	1.0	10	10	10
1996	1.0	10	10	10
1997	1.0	10	10	10
1998	1.0	10	10	10
1999	1.0	10	10	10
2000	1.0	10	10	10
2001	1.0	10	10	10
2002	1.0	10	10	10
2003	1.0	10	10	10
2004	1.0	10	10	10
2005	1.0	10	10	10
2006	1.0	10	10	10
2007	1.0	10	10	10
2008	1.0	10	10	10
2009	1.0	10	10	10
2010	1.0	10	10	10
2011	1.0	10	10	10
2012	1.0	10	10	10
2013	1.0	10	10	10
2014	1.0	10	10	10
2015	1.0	10	10	10
2016	1.0	10	10	10
2017	1.0	10	10	10
2018	1.0	10	10	10
2019	1.0	10	10	10
2020	1.0	10	10	10
2021	1.0	10	10	10
2022	1.0	10	10	10
2023	1.0	10	10	10
2024	1.0	10	10	10
2025	1.0	10	10	10
2026	1.0	10	10	10
2027	1.0	10	10	10
2028	1.0	10	10	10
2029	1.0	10	10	10
2030	1.0	10	10	10
2031	1.0	10	10	10
2032	1.0	10	10	10
2033	1.0	10	10	10
2034	1.0	10	10	10
2035	1.0	10	10	10
2036	1.0	10	10	10
2037	1.0	10	10	10
2038	1.0	10	10	10
2039	1.0	10	10	10
2040	1.0	10	10	10
2041	1.0	10	10	10
2042	1.0	10	10	10
2043	1.0	10	10	10
2044	1.0	10	10	10
2045	1.0	10	10	10
2046	1.0	10	10	10
2047	1.0	10	10	10
2048	1.0	10	10	10
2049	1.0	10	10	10
2050	1.0	10	10	10
2051	1.0	10	10	10
2052	1.0	10	10	10
2053	1.0	10	10	10
2054	1.0	10	10	10
2055	1.0	10	10	10
2056	1.0	10	10	10
2057	1.0	10	10	10
2058	1.0	10	10	10
2059	1.0	10	10	10
2060	1.0	10	10	10
2061	1.0	10	10	10
2062	1.0	10	10	10
2063	1.0	10	10	10
2064	1.0	10	10	10
2065	1.0	10	10	10
2066	1.0	10	10	10
2067	1.0	10	10	10
2068	1.0	10	10	10
2069	1.0	10	10	10
2070	1.0	10		

SUPERINTENDING ENGINEER

SOLID

[illegible]

MADRID 14

MADURAI-14