

TENDER CODING SHEET (RATE EXCLUSIVE OF GST TO BE FILLED UP BY THE TENDERER IN THIS CODING SHEET)					
NAME OF WORK : PROVIDING PLINTH PROTECTION FOR THE WORK OF CONSTRUCTION OF 236 NOS. OF PC/HC QUARTERS FOR TSP XII BATTALION AT SAKKARAKOTTAI VILLAGE IN RAMANATHAPURAM DISTRICT (GROUP-I)					
<i>Item. No.</i>	<i>Description</i>	<i>Qty</i>	<i>Unit</i>	<i>Rate exclusive of GST in figures and in words</i>	<i>Amount</i>
1.5	Earth work excavation for Open foundation (excluding refilling) a. 0 to 2 mt.	67.50	1 Cum		
13.1	Filling with excavated earth	290.30	1 Cum		
238	<b>Electrical arrangements</b> Anticorrosive treatment for steel reinforcement rods	4.50	1 MT		
1.8.6	<b>Annexure</b> Providing Bored cast in situ piles of using standardized concrete mix M30 grade a) 230mm dia	335.00	1 Rmt		

<i>Item. No.</i>	<i>Description</i>	<i>Qty</i>	<i>Unit</i>	<i>Rate exclusive of GST in figures and in words</i>	<i>Amount</i>
<b>2.1.3</b>	Supplying and filling the Foundation and Basement with Crushed stone sand	<b>19.60</b>	<b>1 Cum</b>		
<b>3.1.1</b>	C.C.1:5:10 using 40mm size HBSJ for Foundation & Basement using crushed stone sand	<b>43.02</b>	<b>1 Cum</b>		
<b>3.3.1</b>	P.C.C. 1:8:16 using 20 mm broken brick jelly using crushed stone sand	<b>24.00</b>	<b>1 Cum</b>		
<b>4.5.1</b>	Standardized Concrete mix M30 Grade using crushed stone sand a. In Foundation and basement	<b>75.80</b>	<b>1 Cum</b>		

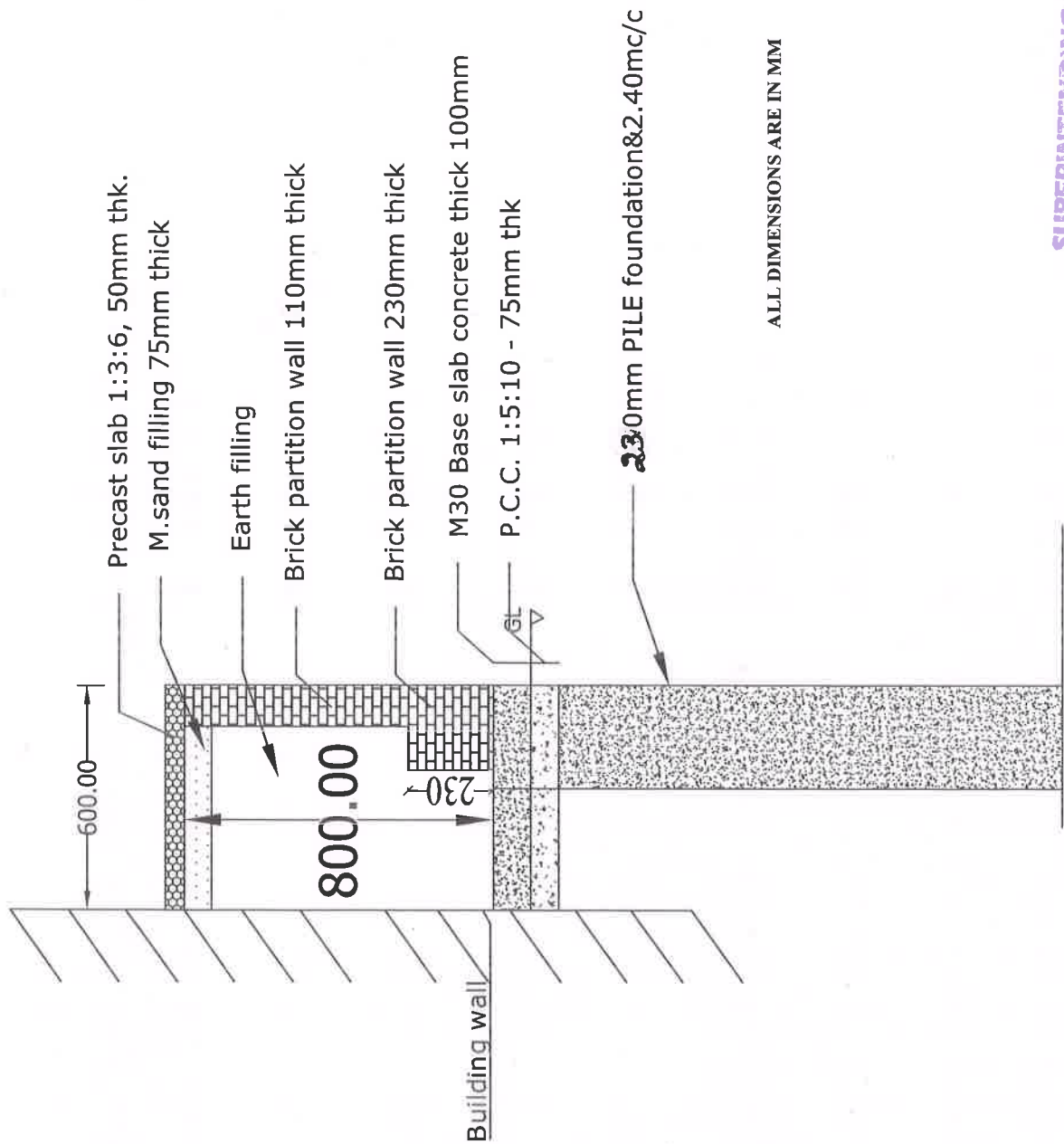
<i>Item. No.</i>	<i>Description</i>	<i>Qty</i>	<i>Unit</i>	<i>Rate exclusive of GST in figures and in words</i>	<i>Amount</i>
<b>6.7.1</b>	Brick work in C.M. 1:5 (F& B) using fly ash bricks of size 23x11x7cm using crushed stone sand	<b>64.00</b>	<b>1 Cum</b>		
<b>10.7.1</b>	Brick partition wall in C.M. 1:4 using fly ash bricks of size 23x11x7 cm 110 mm tk (B.P.) using crushed stone sand a. In Foundation and Basement	<b>755.00</b>	<b>1 Sqm</b>		
<b>18.1</b>	Formwork using M.S.Sheet a. For Column footings, plinth beam, Grade beam, Raftbeam, Raft slab etc.,	<b>318.70</b>	<b>1 Sqm</b>		
<b>28.1</b>	Floor plastering in C.M. 1:4, 20mm thick. using crushed stone sand	<b>114.80</b>	<b>1 Sqm</b>		

<i>Item. No.</i>	<i>Description</i>	<i>Qty</i>	<i>Unit</i>	<i>Rate exclusive of GST in figures and in words</i>	<i>Amount</i>
33.1	Plastering in C.M. 1:5, 12 mm tk. using crushed stone sand	1176.20	1 Sqm		
34.1	Plastering in C.M. 1:4, 12 mm tk. using crushed stone sand	745.30	1 Sqm		
43.1.1	Supplying, Fabricating and fixing of Mild steel / RTS grills (without cement slurry wash) reinforcement for all sizes of rods (Binding Wire insulated with PVC)	4.50	1 MT		
50.6.1	Precast slab 50 mm tk.in C.C.1:3:6 mixed with fibre using crushed stone sand	486.40	1 Sqm		
	<b>TOTAL</b>				
<b>(Rupees</b>					
)					





Name of Work : CONSTRUCTION OF 236NOS PC/HC QTRS FOR TSP XVI BN AT SAKKARAUKOTTAI VILLAGE IN RAMANATHAPURAM DIST. UNDER GR-1



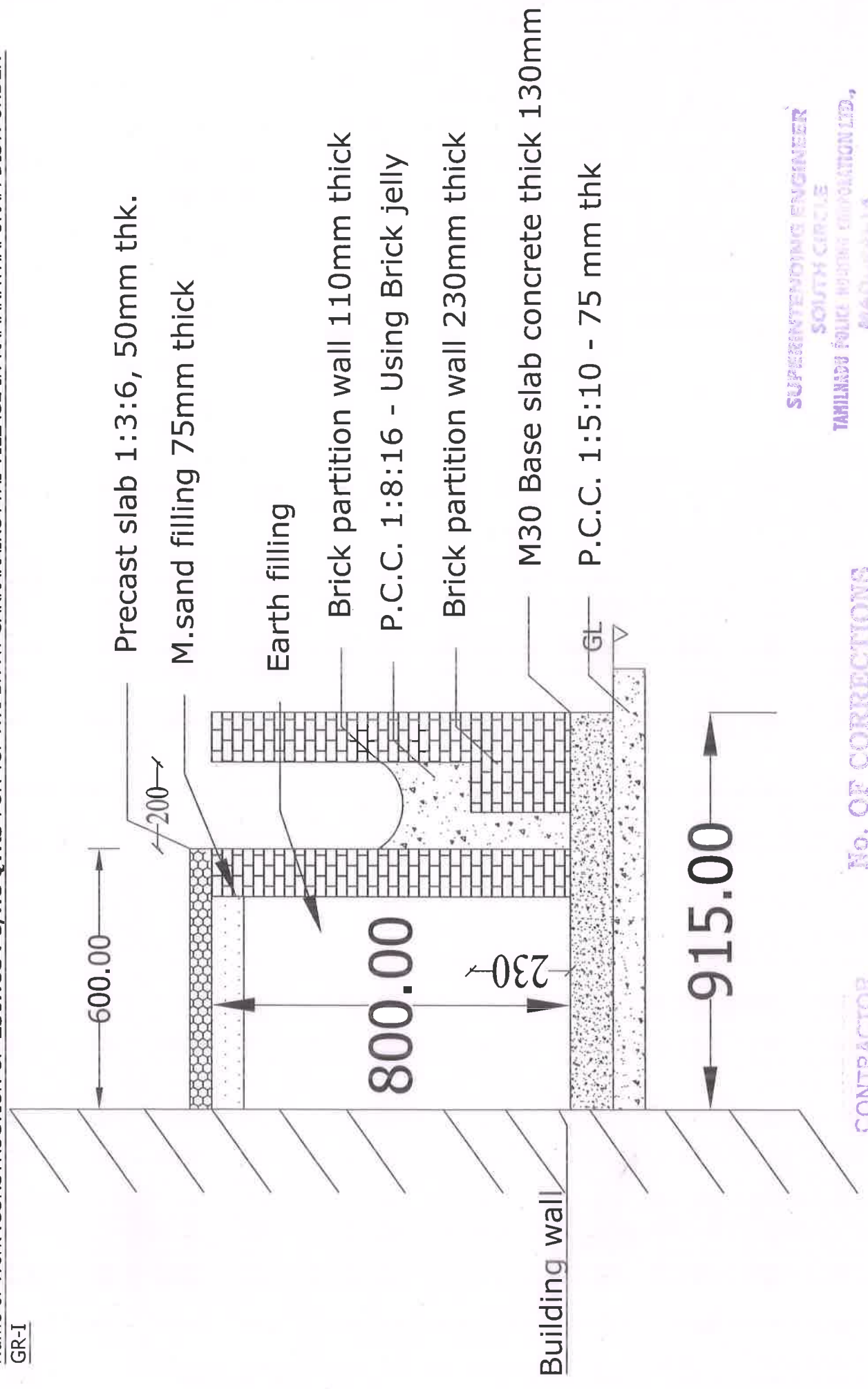
ALL DIMENSIONS ARE IN MM

PLINTH PROTECTION  
No. OF CORRECTIONS

SUPERINTENDING ENGINEER  
SOUTH CIRCLE  
TAMILNADU POWER ENGINEERING CORPORATION LTD.,  
MASSALUR 605 014.

CONTRACTOR

Name of Work :CONSTRUCTION OF **236NOS PC/HC QTRS** FOR TSP XVI BN AT SAKKARAIKOTTAI VILLAGE IN RAMANATHAPURAM DIST. UNDER  
GR-I



SUPERINTENDING ENGINEER  
SOUTH CIRCLE  
TAMILNADU POLICE INSURANCE CORPORATION LTD.,  
MADURAI-14.

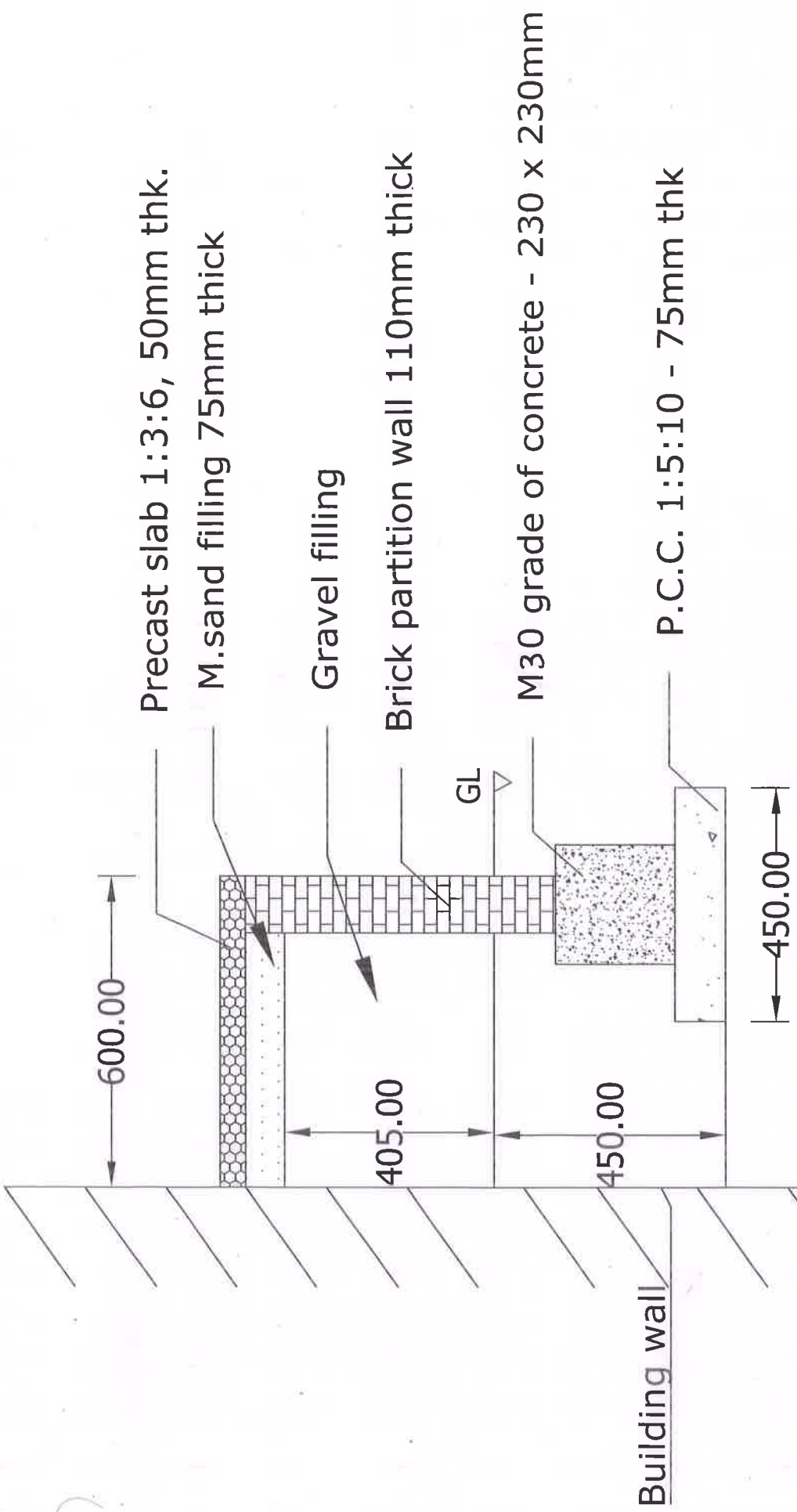
CONTRACTOR  
No. OF CORRECTIONS

# PLINTH PROTECTION & DRAINAGE

ALL DIMENSIONS ARE IN MM



Name of Work : CONSTRUCTION OF **236NOS PC/HC QTRS** FOR TSP XVI BN AT SAKKARAIKOTTAI VILLAGE IN RAMANATHAPURAM DIST. UNDER GR-I



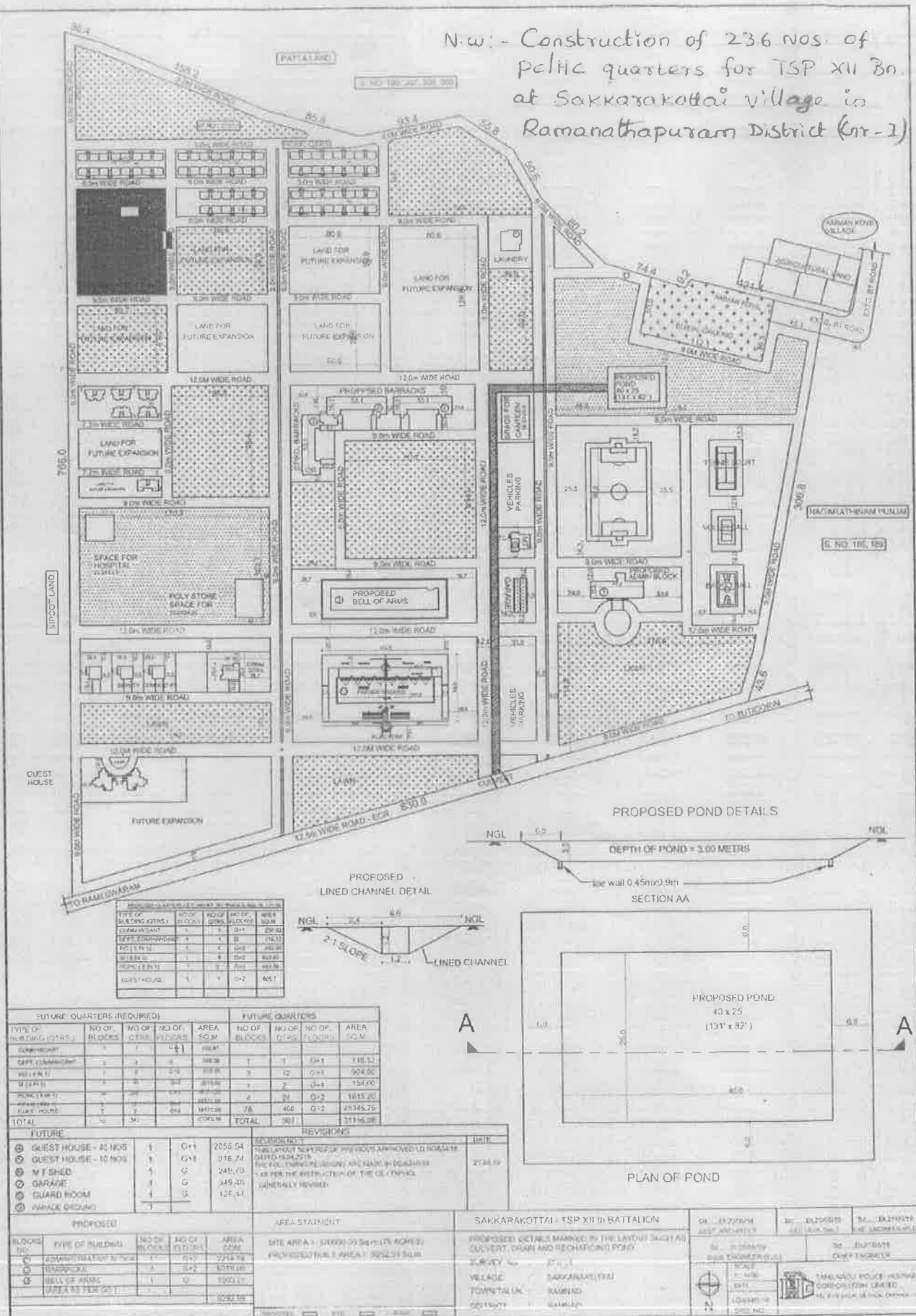
SUPERINTENDING ENGINEER  
SOUTH CIRCLE  
TAMILNADU PUBLIC WORKS CORPORATION LTD.,  
MADURAI-14.

No. OF CORRECTIONS

CONTRACTOR

## PLINTH PROTECTION

ALL DIMENSIONS ARE IN MM



**SUPERINTENDING ENGINEER  
SOUTH CIRCLE  
TAMILNADU POLICE HOUSING CORPORATION LTD.,  
MADURAI-14.**

CONTRACTOR

No. OF CORRECTIONS