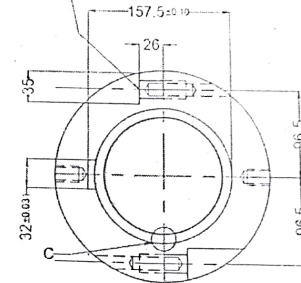
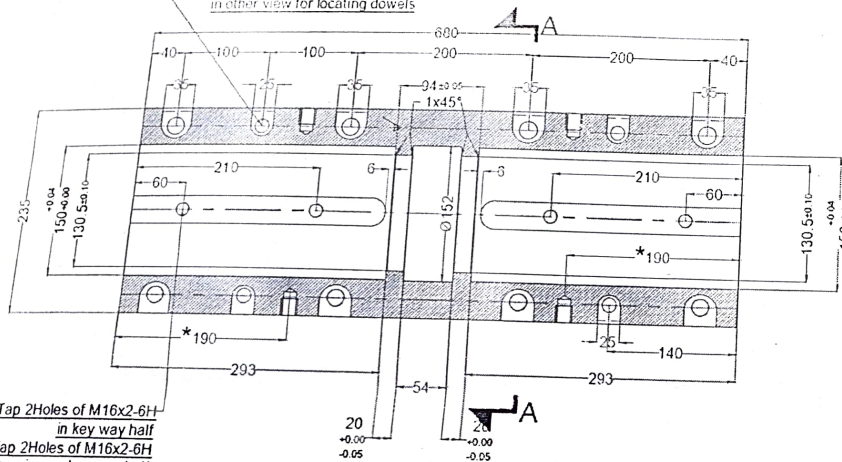


CE-19/2022-23
Drawing.

MUFF COUPLING ASSEMBLY

2 Holes in each half drilled and Reamed $\varnothing 16 \times 20$ deep in one half and Right through the other half as shown in other view for locating dowels

$\varnothing 22$ 4 Holes in each half as shown drilled through



Split on vertical C
Section A - A

1. Drill & Tap 2 Holes of M16x2-6H in key way half
2. Drill & Tap 2 Holes of M16x2-6H 25mm deep in non key way half

THE DRAWING IS ONLY INDICATIVE SAMPLE MAY BE INSPECTED AT SITE BEFORE QUOTING AND SUPPLY

INDENT NO	: DT
DRAWING NO	: CAD/CWPH/NCTPS-I
MATERIAL	: BS970316S16
DRAWING	: NOT TO SCALE

ALL DIMENSION ARE IN MM

Detail - C

Two Halves to be Chamfered at split to prevent nipping on shai

EE/M/CAD/NCTPS-I

AEE/M/CAD/NCTPS-I

JE/M/CAD/NCTPS-I

- * M20x2.5-6H 2 Holes each half for lifting purpose
Max drill depth 27.0
Min thread length 19.5