

## PWD

BUILDINGS (CONSTRUCTION AND MAINTENANCE) DIVISION, ERODE.11.

## SCHEDULE

NAME OF WORK : Construction of Veterinary Dispensary [Under NABARD RIDF XXVII (2021-2022) Building at Perodu, Erode Taluk in Erode District.

Sl.No.	Approximate Quantity	Description of work.	TNBP No. NBC no.,	Rate(in figures and in words)	Unit of measurement (in figures and in words)	Amount in Rs.
1	2	3	4	5	6	7
1	104.17 M <sup>3</sup> [One hundred and four cubic metres and one hundred and seventy cubic decimetres]	<b>Earthwork Excavation for foundation</b> in all soils and sub soils and to full depth as may be directed except in rock requiring blasting, but inclusive of shoring, strutting and baling out water wherever necessary and refilling the sides of foundation with excavated earth in layers of not more than 15cm thick, well rammed, consolidated and depositing the surplus earth within the compound in places shown by the departmental officers with initial lead and lift etc., complete complying with standard specifications.	23 & 24 V, VI	172.30 (Rupees One Hundred Seventy two and paise Thirty only)	1 M <sup>3</sup> [One cubic metre]	17948.49
2	418.00 RM [Four hundred and eighteen running metres]	Drilling and grouting holes in hard granite 40mm diameter as specified by the departmental officer etc., complete complying with standard specifications.	Special	190.00 (Rupees One Hundred Ninety only)	1 RM (One running metre)	79420.00
3	19.30 M <sup>3</sup> [Nineteen cubic metres and three hundred cubic decimetres]	<b>Earth work open excavation</b> in all soils and sub-soils and to full depth as may be directed except in rock requiring blasting inclusive of shoring shuttering, bailing out water wherever necessary and depositing the excavated earth with a lead of 10 mts. within the compound in places shown by the departmental officers and clearing and levelling the site, etc., complete complying with standard specification.	23 & 24 V, VI	80.55 (Rupees Eighty and paise Fifty five only)	1 M <sup>3</sup> [One cubic metre]	1554.62
4	7.79 M <sup>3</sup> [Seven cubic metres and seven hundred and ninety cubic decimetres]	<b>Cement Concrete 1:5:10</b> (One cement, five M- sand and Ten aggregate) using 40 mm gauge hard broken granite stone jelly for <b>foundation</b> including dewatering wherever necessary and laid in layers of not more than 15 cm thick well rammed, consolidated and curing etc. complete complying with standard specification	28 V, VI S2	4463.40 (Rupees Four thousand Four Hundred Sixty three and paise Forty only)	1 M <sup>3</sup> [One cubic metre]	34769.89
5	30.00 M <sup>3</sup> [Thirty cubic metres]	Supplying and filling in foundation and basement with <b>M- sand</b> in layers of not more than 15cm thick, well watered, rammed and consolidated complying with standard specification etc., complete complying with standard specification.	24 & 25 NBC Part VI[S2] 8	1487.44 (Rupees One thousand Four Hundred Eighty seven and paise Forty)	1 M <sup>3</sup> [One cubic metre]	44623.20

Contractor

Sd /.....  
 Executive Engineer, P.W.D  
 Buildings (Cand M) Division, Erode

1	2	3	4	5	6	7
6	53.80 M <sup>3</sup> [Fifty three cubic metres and eight hundred cubic decimetres]	Supplying and filling in foundation and basement with <b>conveyed gravel (fit for filling) conveyed from the specified quarry with a lead of 3 to 5km in layers of not more than 15 cm thick</b> well rammed watered, and compacted etc. complete complying with standard specification and as directed by the departmental officers.	24 & 25 NBC. Part VI(S2) 8	305.60 (Rupees Three Hundred Five and paise Sixty only)	1 M <sup>3</sup> [One cubic metre]	16441.28
7	33.50 M <sup>3</sup> [Thirty three cubic metres and five hundred cubic decimetres]	Refilling with <b>Excavated earth</b> other than sand with an initial head load of 100mts. and depositing the earth as shown by the departmental officers in layers of not more than 15cm thick well rammed, watered and consolidated etc., complying with standard specification	24 & 25 NBC. Part VI(S2) 8	33.60 (Rupees Thirty three and paise Sixty only)	1 M <sup>3</sup> [One cubic metre]	1125.60
8	Fly ash Brick Work in cement mortar 1:6 (one cement and six M-sand) using best quality FLY ASH bricks of size 9"x4 3/8"x2 3/4'(23x11x7cm) for the following including curing etc., complete complying with standard specifications					
a	26.10 M <sup>3</sup> [Twenty six cubic metres and one hundred cubic decimetres]	For Foundation and Basement	31 & Similar to 31C V, VI [S5] VII	6291.80 (Rupees Six thousand Two Hundred Ninety one and paise Eighty only)	1 M <sup>3</sup> [One cubic metre]	164215.98
b.	34.00 M <sup>3</sup> [Thirty four cubic metres]	For Super Structure in Ground Floor	31 & Similar to 31C V, VI [S5] VII	6359.80 (Rupees Six thousand Three Hundred Fifty nine and paise Eighty only)	1 M <sup>3</sup> [One cubic metre]	216233.20
9	Fly ash Brick Work in cement mortar 1:5 (one cement and five crushed stone sand) using best quality FLY ASH bricks of size 9"x4 3/8"x2 3/4'(23x11x7cm) for the following including curing etc., complete complying with standard specifications					
a	11.50 M <sup>3</sup> [Eleven cubic metres and five hundred cubic decimetres]	For Foundation and Basement	31 & Similar to 31C V, VI [S5] VII	6364.00 (Rupees Six thousand Three Hundred Sixty four only)	1 M <sup>3</sup> [One cubic metre]	73186.00
10	FLY ASH Brick Work in cement mortar 1:3 (one cement and three crushed stone sand) using best quality FLY ASH bricks of size 9"x4 3/8"x2 3/4'(23x11x7cm) for the following including curing etc., complete complying with standard specifications.					
a	6.60 M <sup>3</sup> [Six cubic metres and six hundred cubic decimetres]	For Foundation and Basement	31 & Similar to 31C V, VI [S5] VII	6652.80 (Rupees Six thousand Six Hundred Fifty two and paise Eighty only)	1 M <sup>3</sup> [One cubic metre]	43908.48

Contractor

Sd /.....  
Executive Engineer, P.W.D  
Buildings (Cand M) Division, Erode

1	2	3	4	5	6	7
11	<b>Fly ash Brick Partition Wall</b> of the following thickness in cement mortar 1:3 (One cement and three crushed stone sand) using best quality Fly Ash bricks of size 23cm X 11cm X 7cm and complying with standard specification etc., complete in the following floors Note: Wherever reinforcement is considered necessary by the departmental officers, hoop iron reinforcement shall be provided by the contractor as directed during execution without any extra cost..					
a	95.00 M <sup>2</sup> [Ninety five square metres]	For Super Structure in Ground Floor - 11.50 cm Thick	31 of TNBP. V,VI(S3) VII	859.00 (Rupees Eight Hundred Fifty nine only)	1 M <sup>2</sup> [One square metre]	81605.00
12	101.49 M <sup>2</sup> [One hundred and one square metres and forty nine square decimetres]	Supplying and erecting steel centering including necessary supports for plane surfaces for Reinforced Cement Concrete works such as <b>column footings, column pedestals, plinth beams, grade beams, staircase steps</b> , etc. which require only nominal strutting using mild steel sheets of size 90cm x 60cm and 10 BG stiffened with welded mild steel angles of size 25mm x 25mm x 3 mm for boarding, laid over silver oak joists of size 10cm x 6.5cm spaced at about 75cm centre to centre or at suitable intervals etc. complete in all floors complying with standard specification. (Payment for centering shall be given after the	30 & 46J V,VI	747.70 (Rupees Seven Hundred Forty seven and paise Seventy only)	1 M <sup>2</sup> [One square metre]	75884.07
13	SUPPLYING AND ERECTING CENTERING for sides and soffits including supports and strutting upto 3.29m high for plane surfaces such as detailed below in all floors with all cross bracings using mild steel sheets of size 90cm X 60cm and BG 10 stiffened with welded mild steel angles of size 25mm X 25mm X 3mm for boarding laid over country wood joists of size 10cm X 6.50cm spaced at about 90cm centre to centre and supported by Casuarina props of 10cm to 13cm diameter spaced at 75cm centre to centre etc., complete complying with standard specification and as directed.					
a	252.85 M <sup>2</sup> [Two hundred and fifty two square metres and eighty five square decimetres]	For plane surfaces such as RCC floor slab, roof slab, beams, lintels, bed blocks, landing slab, waist slab, portico slabs and beams, etc.	30[S] 86 86 A V,VI[S3] VII	840.35 (Rupees Eight Hundred Forty and paise Thirty five only)	1 M <sup>2</sup> [One square metre]	212482.50
b	143.20 M <sup>2</sup> [One hundred and forty three square metres and twenty square decimetres]	For rectangular or square RCC columns, sunshades, sill slab, top and bottom slab of RCC boxing, etc.,	30[S] 86 86 A V,VI[S3] VII	1008.45 (Rupees One thousand Eight and paise Forty five only)	1 M <sup>2</sup> [One square metre]	144410.04

Contractor

Sd /.....  
Executive Engineer,P.W.D  
Buildings (Cand M)Division,Erode

1	2	3	4	5	6	7
14	Providing and laying in position, standardised concrete <b>Mix M-20 Grade</b> in accordance using 20mm with IS:456-2000, and down graded hard broken granite stone jelly for all RCC items of works with minimum cement content of 325 kg/ms and maximum water cement ratio of 0.55, including admixture (plasticiser / super plasticiser) in recommended proportions as per IS:9103 to accelerate, retarded setting of concrete, improve workability without impairing strength and durability with about (5 cu.m.) 7730 kg. of 20mm machine crushed stone jelly and with about (3.3 cu.m.) 5156 kg. of 10-12mm machine crushed stone jelly and with about (4.79 cu.m') 7670 kg. of crushed stone sand, but excluding cost of reinforcement grill and fabricating charges, centering and shuttering and also including laying, vibrating with mechanical vibrators, finishing, curing, etc. and providing fixtures like fan clamps in the RCC floor/ roof slabs wherever necessary without claiming extra, etc., complete complying with standard specification and as directed by the departmental officers. The coarse and fine aggregates to be used should comply with the requirements of IS standards. (No separate payment will be made by the Department for the excess usage of materials).					
a	38.90 M <sup>3</sup> [Thirty eight cubic metres nine hundred cubic decimetres]	For Foundation and Basement	30 V,VI (S3) VII.3	7297.41 (Rupees Seven thousand Two Hundred Ninety seven and paise Forty one only)	1 M <sup>3</sup> [One cubic metre]	283869.25
b.	36.00 M <sup>3</sup> [Thirty six cubic metres]	For Superstructure in Ground Floor	30 V,VI (S3) VII.3	7400.71 (Rupees Seven thousand Four Hundred and paise Seventy one only)	1 M <sup>3</sup> [One cubic metre]	266425.56
15	Supplying, fabricating and placing in position steel reinforcement using mild steel / ribbed tor steel rods of required sizes for all RCC works as per the design given including cost of steel and binding wire in all floors etc., complete complying with standard specification.					
a	86.00 Qtl [Eighty six quintal]	USING MS / RTS RODS	97 V,VI(S6) VII(S6) VII.3	7845.37 (Rupees Seven thousand Eight Hundred Forty five and paise Thirty seven only)	1 Qtl (one Quintal)	674701.82
16	19.20 M <sup>3</sup> [Nineteen cubic metres and two hundred cubic decimetres]	<b>Cement Concrete 1:5:10</b> (One cement, five crushed stone sand and Ten hard broken stone jelly) using 40 mm gauge hard broken granite stone jelly for <b>flooring</b> including dewatering wherever necessary and laid in layers of not more than 15 cm thick well rammed, consolidated and curing etc. complete complying with standard specification	28 V, VI S2	4463.40 (Rupees Four thousand Four Hundred Sixty three and paise Forty only)	1 M <sup>3</sup> [One cubic metre]	85697.28

1	2	3	4	5	6	7
17	Manufacturing supplying and fixing of <b>steel door</b> with the following specification MS angles of size 40x40x6mm are used for the outer frames and M.S. angles of size 35x35x5mm for the shutter frames stiffeners with 32 x 6mm M.S flat is provided at required intervals in the shutter frame. 18-gauge C.R. sheet laid as panel in the shutter and welded intact. M.S. flat 18x5mm is welded over the 32 x 6mm M.S. flat sandwiching the C.R. sheet in between additional stiffeners with 18x5mm M.S. flat is provided diagonally at the rear side of the shutter, 3nos. of hinges in case of single leaf and 6nos. of hinges in double leaves shutter to be provided 6nos. of holdfasts 120 mm in length made of angle section spliced at the ends are welded to the outer frames of the door. Tower bolts 2nos. one at the top and the other at the bottom are provided 1no. Aldrop is provided incase of double leaf door at lock rail section in the door in single leaf door, one more aldrop is provided in the inner lock rail section of the door One rotaing locking arrangements for the inner side of the door and additional provision for locking arrangements for lock is provided on the rear side of the door at an appropriate place. Incase of double leaf door M.S.Flat 32 x 3mm at 1.1Kg/m is provided on the one shutter t conceal the gap between the two shutters.at an appropriate place in the door. A tie bar is provided at the bottom of the frame to prevent twisting of frame during transportation and fixing. All members are given a coat of red oxide primer as directed by the departmental officers. The rate includes cost of all materials, labour charges, transportation to site of work, loading, un loading and all other incidental charges etc., complete.					
a	13.65 M <sup>2</sup> [Thirteen square metres and sixty five square decimetres]	Double leaves	Special.	4281.00 (Rupees Four thousand Two Hundred Eighty one only)	1 M <sup>2</sup> [One square metre]	58435.65
18	Fabricating, Supplying and fixng in position of <b>steel sheeted windows ( Double Leaves)</b> with the following specifications. Outer frames of windows made of 'Z' section F7D of size 33 x 25 x 3mm at 1.419 kg/ m and mullion 'J' section (F4B) of size 46x25x3mm at 2.28kg/m and shutter section of made of F7D of 33x25x3mm at 1.419 kg/m as specified in IS 7452/1990. Each openable shutter should not exceed a width of 600mm to enable separate operations and easy maintenance. The panel of the shutters to be covered with 18 gauge cold rolled sheet of superior quality and welded intact with shutter frames. Horizontal stiffeners using 18x5mm MS Flat at 0.70kg/m at 3 Nos. for each shutter and additional diagonal stiffners of the same MS flats at all the four corners of each shutters to the suitable length welded to the shutters, for holding the CR Sheets in position firmly. 2 numbers of sturdy hinges and one number of handle-cum-latch of special type made with 18x5mm MS flats are revetted to the shutters at an appropriate height in window. suitable opening is left for its easy operation. a stopper square rod for handle is provided in the mullion section at suitable place to catch the window handle. each window shutter having an adustable stay made out of 18 x 5mm at 0.70 kg/ m MS flat of lenght 320mm with three adjustable position. A matching peg is provided in the outer frame of the window at suitable place. 4 Nos. of hold fasts of 120mm length spliced at the ends are welded to the outer frame of the window by using MS flat of 18x5mm at 0.70kg/m, welded to the shutter at two place equivalent from each from top and bottom of the shutter.An MS square bar of 12mm size is welded to the inner face of the window at an equal interval not exceeding 100mm edge between them. All members are painted with one coat of anti-corrosive red oxide primer as directed by the departmental officers.All sections should be in confirmed with IS 7452/1990.The cost includes cost of all materials, labour charges and other incidental charges etc., complete.					
a	11.70 M <sup>2</sup> [Eleven square metres and seventy square decimetres]	Double Leaves	81X11 (S5)15	3993.00 (Rupees Three thousand Nine Hundred Ninety three only)	1 M <sup>2</sup> [One square metre]	46718.10

1	2	3	4	5	6	7
19	3.78 M <sup>2</sup> [Three square metres and seventy eight square decimetres]	<b>Solid PVC door shutter with frame</b> using 19 Gauge 19mm MS square tubes for styles and outer frames. 15mm MS square tubes for top, lock and bottom rails. The steel tubes shall be covered with 5mm thick solid PVC sheets. Shutter using 5mm thick solid PVC sheets for panelling shall rigidly fixed in position including necessary furniture and fittings. The over all size of styles shall be 50mm x 30mm. The over all size of top rail, Lock rail and bottom rail shall be 75mm x 30mm. The over all size of frames shall be 50mm x 45mm, with suitable lock for opening the shutter.	Special.	3167.00 (Rupees Three thousand One Hundred Sixty seven only)	1 M <sup>2</sup> [One square metre]	11971.26
20	1.08 M <sup>2</sup> [One square metres and eight square decimetres]	supplying and fixing in position Glazed steel ventilator with Side/Central hung shutters( Two Leaves) frames and made shutter frame made out of steel section conforming to IS 7452 /1990.The outer frame made out of z section (F7D) of size 33 x22 x3 mm conforming to IS 7452/1990.The mullions are made out of (F4B) section of size 46x25x3 mm and conforming to IS7452/1990.The shutters are individual and each of them can be operated separately.Sash bars are made of T section (T2) of size 25 x 22 x 3mm 2 nos of sturdy hinges and one number of handle cum latch of special type are fixed are each openable shutter with suitable opening in left for its easy operation, one member of adjustable strings with fixing brackets of sufficient length are provided for each shutter 4 nos of 40 x 40 x 3 mm angle hold fast 230mm length are welded with the frame at appropriate point M.S Square bars of 12 mm dia is welded to the inner face of the ventilator at equal intervals not exceeding 10 cm spacing 3mm pin headed glass is used for Glazing with good quality an f fixed with 15 x 12 mm teak wood beadings with screws for fixing .The shutters are to open outside.All the section are given with one coat of red oxide primeretc., complete complying with standard specification.The sample of materials and fittings shall be got approved by the departmental officers before use on work. ( The rate shall inclusive of cost all materials labour charges one coat of primer,weld charges, including cost of welding electrodes,transportation to site work, loading,unloading and incidental charges etc.,	Special	4015.00 (Rupees Four thousand Fifteen only)	1 M <sup>2</sup> (One square metre)	4336.20
21	630.80 kg [Six hundred and thirty kilogirams and eighty milligirams]	Supplying and fixing <b>MS GRILLS</b> to doors, windows and ventilators etc., using necessary flats for inner and outer members which should be fixed or welded to masonry or column including necessary dismantling or making holes and redoing the same to original condition as directed by the dept officers, inclusive of cost providing one coat of best quality red oxide primer complete complying with standard specification(The designs of MS grills should be got approved before their use in execution.	TNBP 86-A	90.20 (Rupees Ninety and paise Twenty only)	1 Kg (One Kilo gram)	56898.16
22	13.33 M <sup>3</sup> [Thirteen cubic metres and three hundred and thirty cubic decimetres]	<b>Plain cement concrete 1:2:4</b> (One Cement, two crushed stone sand and Four hard broken stone jelly) using 10-12 mm jelly for wearing coat including laying, compacting, finishing and curing etc. ., complete complying with standard specification and as directed by the departmental officers. <b>Superstructure in Ground Floor</b>	30V,VI [S5] VII & 13	5995.50 (Rupees Five thousand Nine Hundred Ninety five and paise Fifty only)	1 M <sup>3</sup> [One cubic metre]	79920.02

1	2	3	4	5	6	7
23	19.00 RM [Nineteen running metres]	Supplying and fixing in position best approved of BIS quality <b>PVC rain water down fall pipes of 110mm dia</b> having a pressure of 4 kg. / sq.cm including cost of necessary PVC shoe, PVC bend, cast iron gratings of required diameter and special clamps, brass screws, nails, etc., and fixing of cast iron gratings at junction of parapet and the RCC roof slab including finishing neatly etc., complete. The rate shall be inclusive of cast of removable cast iron grating. The PVC pipe shall be fixed in wall with special type of "U" clamp at the centre of the pipe line in addition to those for more than 3.0 metre pipe length, etc., complete complying with standard specification.	Special	532.70 (Rupees Five Hundred Thirty two and paise Seventy only)	1 RM (One running metre)	10121.30
24	78.00 M <sup>2</sup> [Seventy eight square metres]	Supplying and fixing fine polished <b>cuddapah slab 20/30mm thickness</b> for cup-board arrangements including laying to correct alignment with necessary cement mortar and black powder etc, complete complying with standard specification and as directed by the departmental officers	8 V(2) VIII.3.1.3.5.3. 5.5.,3.4.,3.2	469.55 (Rupees Four Hundred Sixty nine and paise Fifty five only)	1 M <sup>2</sup> [One square metre]	36624.90
25	74.40 M <sup>2</sup> [Seventy four square metres and forty square decimetres]	Paving the floor with best quality <b>Double charged Vertified Tiles of size 600 x 600 x 8mm</b> of approved colour, shade and quality laid in cement mortar 1:3 (one cement and three sand) 20mm thick in all floors and the top pointed with the white cement mixed same colour pigments etc., complete complying with standard specification. (The make and brand of the tiles should be got approved by Executive Engineer before use on works)	Special	1368.80 (Rupees One thousand Three Hundred Sixty eight and paise Eighty only)	1 M <sup>2</sup> (One square metre)	101838.72
26	41.80 M <sup>2</sup> [Forty one square metres and eighty square decimetres]	Providing <b>granolithic floor finish</b> of the following thickness with plain cement concrete 1:2:4 (One Cement, two crushed stone sand and four aggregate) using 10 to 12mm gauge hard broken stone jelly including laying, finishing and the top rubbed smooth with power trowl, thread lining, curing etc. complete complying with standard specification and as directed by the departmental officers. (The rate is inclusive of necessary planking for panelling wherever necessary and as directed by the departmental officers). <b>25 mm thick.</b>	Similar to 41G V,VI(S5A) VII.3	150.80 (Rupees One Hundred Fifty and paise Eighty only)	1 m <sup>2</sup> (One square metre)	6303.44
27	29.60 M <sup>2</sup> [Twenty nine square metres and sixty square decimetres]	Paving the floor with <b>kota stone slab of size 600 x 600 of 18 / 20mm (un-polished)</b> in all floors laid in of cement mortar 1:3 (one cement three sand), 20mm thick and pointed with colour cement neatly including polishing with polishing stone and oxalic acid etc., so as to perfectly smooth and glossy and including hire charges for polishing machine and power consumption charges etc. The kota stone slabs and other materials to be used shall be got approved by the Executive Engineer concerned before use on work, etc., complete as per standard specification.	TNBP 13-A VOL-I	1321.10 (Rupees One thousand Three Hundred Twenty one and paise Ten only)	1 M <sup>2</sup> [One square metre]	39104.56

1	2	3	4	5	6	7
28	8.80 M <sup>2</sup> [Eight square metres and eighty square decimetres]	Flooring with following <b>Ceramic Tiles</b> of best approved quality and colour of size 305x 305x 6mm in all floors over a base layer of cement mortar 1:3 (One cement and three crushed stone sand) 20mm thick and pointing neatly with same colour cement at 0.30 Kg/ Sq.M to suit the colour of the tiles and specifications, including finishing the joints and pointing flush with even surface etc., as directed by the departmental officers. (The tiles should be got approved by the Executive Engineer before use on work)	Special	930.80 (Rupees Nine Hundred Thirty and paise Eighty only)	1 M <sup>2</sup> [One square metre]	8191.04
29	24.30 M <sup>2</sup> [Twenty four square metres and thirty square decimetres]	<b>Dadoing the walls</b> upto the required height with best quality of COLOUR/WHITE GLAZED TILES of best approved quality in cement mortar 1:2 (One cement and two crushed stone sand) 10mm thick and pointed with colour cement at 0.4 Kg / sq.m.neatly to full depth of tiles in all floors as directed and complying with standard specification.The colour of the tiles should be got approved before execution from the departmental officers.Dadoing with printed design colour glazed tiles of size 300mmx200mmx6mm.	Special	1248.00 (Rupees One thousand Two Hundred Forty eight only)	1 M <sup>2</sup> [One square metre]	30326.40
30	146.70 M <sup>2</sup> [One hundred and forty six square metres and seventy square decimetres]	Paving the Top of roof with <b>Solar Reflective tiles of 305mm x 305mm x 7mm</b> thick of approved quality and clour laid in cement mortar 1:3 (one cement three crushed stone sand), 20mm thick and pointed with colour cement neatly including polishing with polishing stone and oxalic acid etc., so as to perfectly smooth and glossy and including hire charges for polishing machine and power consumption charges etc. The kota stone slabs and other materials to be used shall be got approved by the Executive Engineer concerned before use on work. etc., complete as per standard specification.	TNBP 13-A VOL-I	1338.50 (Rupees One thousand Three Hundred Thirty eight and paise Fifty only)	1 M <sup>2</sup> [One square metre]	196357.95
31	1.00 No [One number]	Supplying and fixing in positon <b>Indian Water Closet</b> (Oriya type) of size 580 x 440mm white glazed earthen ware of approved quality and brand with "P" or "S" trap conforming to BIS with sand cushion and forming flooring around the closet using 40mm broken brick jelly in lime concrete 1:2:5 (One lime, Two crushed stone sand and Five brick jelly) 100mm thick and finishing the top to the required slope and including giving necessary connection to PVC pipes (including the cost of 110mm dia PVC pipe for a length of 600mm) by dismantling brick masonry wall / reinforced cement concrete roof / floor slab and making good the dismantled portion to the original condition with leakages etc., complete complying with standard specifications and as directed by the departmental officers. (The water closet should be got approved by the Executive Engineer before use on works).	Special	5150.00 (Rupees Five thousand One Hundred Fifty only)	1No [Each]	5150.00

Contractor

Sd /.....  
Executive Engineer,P.W.D  
Buildings (Cand M)Division,Erode



1	2	3	4	5	6	7
32	1.00 No. [One number]	Supplying and fixing in position white / colour glazed <b>European Water Closet</b> of best quality and approved make with 100 mm "P" or "S" trap connecting with CI pipe of 100mm dia / PVC pipe of 110mm dia, double flapped rigid PVC black seat and seat cover with CP brass hinges including cost of white cement, cement for packing, spun yarn, teak wood plugs, brass screws, etc., including supplying and fixing 10 litres capacity PVC / 12.5 litres capacity porcelain low level flushing tank with a pair of CI brackets, etc., complete with all fittings such as 15mm brass ball valve with polythene float with brass handle, union, coupling connected by means of 40mm white PVC flush hand using Indian adopter joint including all internal fittings such as 15mm brass connections, 15mm GM wheel valve, 15mm brass nipple (2 Nos.), 15mm nylon connection, TW plugs, screws and also giving necessary connection to the PVC pipe including cost of 600mm length of 110mm dia PVC pipe and painting the CI brackets with 2 coats of approved paint over one coat of red oxide primer, dismantling the masonry and re-doing the dismantled masonry to original condition etc. complete complying with standard specifications. (The EWC and flushing tank with all accessories should be got approved by the Executive Engineer before use on works)	Special	5677.00 (Rupees Five thousand Six Hundred Seventy seven only)	1 No. (Each)	5677.00
33	2.00 Nos [Two numbers]	Supplying and fixing in position of best Indian make colour glazed earthenware <b>WASH HAND BASIN</b> of size 550 x 400mm with a pair of C.I. brackets, 15mm dia brass chromium plated Pillar tap, 32mm dia G.I. waste water pipe, 32mm dia Chromium plated brass waste coupling, plug with chain, 15mm dia PVC connection, 15mm dia Gun metal wheel valve with ISI mark, and necessary G.I. union and G.I. elbow, including fixing the wash hand basin in position with white lead, clamps, teakwood plugs, screws, rubber washer etc., complete without any leakage complete as directed by the departmental officers.	Special	3492.00 (Rupees Three thousand Four Hundred Ninety two only)	1 No. (Each)	6984.00
34	581.00 M <sup>2</sup> [Five hundred and eighty one square metres]	<b>Plastering with Cement Mortar 1:5</b> (One cement and five M- sand), 12mm thick in all floors including curing etc. complete complying with standard specification and as directed by the departmental officers.	56 & 57	219.70 (Rupees Two Hundred Nineteen and paise Seventy only)	1 m <sup>2</sup> (One square metre)	127645.70
35	319.00 M <sup>2</sup> [Three hundred and nineteen square metres]	<b>Special Ceiling Plastering</b> and finishing all the RCC exposed surfaces such as RCC slabs, sunshades, canopies, staircase steps, landing slabs etc., with cement mortar 1:3 (One cement and three crushed stone sand) 10mm thick including hacking the surfaces and providing necessary cement mortar nosing beading as per standard size and specification wherever necessary using the same mix as directed by the departmental officers etc., complete complying with standard specification.	56 & 57	251.75 (Rupees Two Hundred Fifty one and paise Seventy five only)	1 M <sup>2</sup> [One square metre]	80308.25

1	2	3	4	5	6	7
36	57.45 M <sup>2</sup> [Fifty seven square metres and forty five square decimetres]	<b>Plastering with Cement Mortar 1:3</b> (One cement and three M- sand) <b>12mm thick</b> mixed with water proofing compound conforming to BIS at 2% by weight of cement used including finishing, curing, etc., complete in all floors complying with standard specification and as directed by the departmental officers.	56 & 57	235.85 (Rupees Two Hundred Thirty five and paise Eighty five only)	1 M <sup>2</sup> [One square metre]	13549.58
37	8.00 M <sup>2</sup> [Eight square metres]	Supplying and fixing <b>GI pipe handrails for handicapped persons</b> using 50mm dia GI pipe double handrail at a height of 800mm and 900mm from floor level with 25mm thick MS square rods as balusters embedded in the concrete and welded with pipe at 60cm centre to centre as shown in CA Job No. 9123 / 1 including cutting, welding, bending and fixing charges and applying one coat of red oxide primer for MS members as directed by the departmental officers	51-IX	1454.50 (Rupees One thousand Four Hundred Fifty four and paise Fifty only)	1 M <sup>2</sup> [One square metre]	11636.00
38	470.00 M <sup>2</sup> [Four hundred and seventy square metres]	Painting two coats of newly plastered wall surface with <b>ready mixed plastic emulsion paint</b> of first class quality and of approved colour over a priming coat including thorough scrapping, clean removal of dirt, and including necessary plaster of paris putty, wherever required etc., complete complying with standard specification.	51-IX	211.85 (Rupees Two Hundred Eleven and paise Eighty five only)	1 M <sup>2</sup> [One square metre]	99569.50
39	278.00 M <sup>2</sup> [Two hundred and seventy eight square metres]	Painting the wall two coats approved best quality weather shield <b>Exterior Emulsion</b> paint including cost of priming coat and burshes and scaffolding charges etc., complete complying with standard specification and as directed by the departmental officers	66-X	209.80 (Rupees Two Hundred Nine and paise Eighty only)	1 M <sup>2</sup> [One square metre]	58324.40
40	94.00 M <sup>2</sup> [Ninety four square metres]	PAINTING NEW IRON WORKS for doors, windows and ventilators, iron bars, weldmesh, wiremesh, screen, steel bars, flats and other similar works etc., with two coats of approved first quality of synthetic enamel paint over the one coat of red oxide primer in all floors. The rate is inclusive of cost of all materials and labour, brushes and scaffolding charges etc., complete complying with standard specification. (The paint to be used should be got approved by the Executive Engineer before use on work)	66A-X	192.75 (Rupees One Hundred Ninety two and paise Seventy five only)	1 M <sup>2</sup> [One square metre]	18118.50
41	300.00 RM [Three hundred running metres]	<b>Drilling of 6" dia ( 150mm )</b> Vertical bores in hard rock areas to any required depth as directed by the departmental officials. The rate is inclusive of assembling the equipment in the point as selected, drillingbore, labour charges for inserting casing pipe assembly to the drilled hole including welding the joint if necessary grouting the casing pipe etc., including transportation charge for rig and support vehicle etc., complete.	Special	295.00 (Rupees Two Hundred Ninety five only)	1 RM [One Running metre]	88500.00

Contractor

Sd /.....  
Executive Engineer,P.W.D  
Buildings (Cand M)Division,Erode

1	2	3	4	5	6	7
42	12.00 RM [Twelve running metres]	Supplying of <b>PVC casing pipe</b> ( 6kg/m2) suitable for 6" dia Borewell conforming to I.S 12818 - 1992 with screwed and socked and centering guides for every 15m interval etc, as directed by the departmental officers.	Special	722.00 (Rupees Seven Hundred Twenty two only)	1 RM (One running metre)	8664.00
43	1.00 No [One number]	Supplying and fixing of suitable <b>PVC end cap</b> (6kg/cm2) for 6" dia bore well of best quality with ISI mark. (The PVC end cap should be got approved by the departmental officers before execution)	Special	97.00 (Rupees Ninety seven only)	1 No. (Each)	97.00
44		UPVC pipe (Un-Plasticized polyvinyl chloride) UPVC used for commercial applications operate and designed to handle higher water pressure.				
a	290.00 RM [Two hundred and ninety running metres]	32mm diameter UPVC PIPE..	Special	270.85 (Rupees Two Hundred Seventy and paise Eighty five only)	1 RM (One running metre)	78546.50
45	1.00 set [One set]	Supplying and Erection of best make 5 HP RF/5/50 stage 11/2" Electric <b>submersible Motor</b> suitable for 6" (150mm) dia bore well with necessary ISI phase mark and erected to site including supplying and fixing etc., complete with following accessories suitable for 150mm dia borewell, Adaptor, tap roll, 1 1/4" Jet clamp, End cap, Green rubber, 3/4 teflon tap, 1 1/4 GI coupling, 1 1/4 "x12B/N, Meter board, Meter bolt & nut, sheelac, paste etc., Complete as directed by the departmental officers.	Special	52000.00 (Rupees Fifty two thousand only)	1 No. (Each)	52000.00
46	1.00 No [One number]	Supplying & fixing in position of best quality and the approved variety of <b>PVC WATER TANKS</b> of 1000 litres capacity conforming to I.S.I specifications with necessary inlets and the outlets and overflow, cleaning pipe arrangements and labour charge for fixing in position etc., and properly fixed in the floor top as directed by the departmental officers.	Special	9999.00 (Rupees Nine thousand Nine Hundred Ninety nine only)	1 No [Each]	9999.00
47	1.00 set [One set]	Supply and fixing in position of wall mounting <b>Panel Board</b> consisting of following 1. Relaying with ISI mark, 2. Contract unit with ISI mark, 3. Condenser with ISI mark, 4. Volt meter and Ammeter suitable for above pumpset etc., complete.	Special	13260.00 (Rupees Thirteen thousand Two Hundred Sixty only)	1 No. (Each)	13260.00
48	Supplying, laying and jointing <b>UPVC pipes (Unplasticized polyvinyl chloride) schedule-80</b> of approved quality and best variety conforming to BIS of the following dia including cutting, threading and fixing UPVC specials using UPVC adhesives (but excluding cost of such specials) and fixing into wall with teak wood plugs, UPVC clamps and screws making holes on the wall (or) drilling holes in the roof and making good the dismantled portion to original condition with necessary brick work / cement concrete and plastering neatly wherever necessary with necessary scaffolding charges upto 4 metre height above ground level, etc., complete complying with standard specifications. The UPVC pipes shall be got approved by Executive Engineer before use on works. <b>External Water Supply - Below Ground Level</b>					

Contractor

Sd / .....

Executive Engineer, P.W.D

Buildings (Cand M) Division, Erode

1	2	3	4	5	6	7
a	35.00 RM [Thirty five running metres]	32mm diameter UPVC PIPE..	Special	270.85 (Rupees Two Hundred Seventy and paise Eighty five only)	1 RM (One running metre)	9479.75
49	Supplying, laying and jointing <b>UPVC pipes (Unplasticized polyvinyl chloride) schedule-80</b> of approved quality and best variety conforming to BIS of the following dia including cutting, threading and fixing UPVC specials using U PVC adhesives (but excluding cost of such specials) and fixing into wall with teak wood plugs, U PVC clamps and screws making holes on the wall (or) drilling holes in the roof and making good the dismantled portion to original condition with necessary brick work / cement concrete and plastering neatly wherever necessary with necessary scaffolding charges upto 4 metre height above ground level, etc., complete complying with standard specifications. The UPVC pipes shall be got approved by Executive Engineer before use on works. <b>External Water Supply - Above Ground Level</b>					
a	10.00 RM [Ten running metres]	32mm diameter UPVC PIPE..	Special	326.50 (Rupees Three Hundred Twenty six and paise Fifty only)	1 RM (One running metre)	3265.00
b	20.00 RM [Twenty running metres]	25mm diameter UPVC PIPE..	Special	231.30 (Rupees Two Hundred Thirty one and paise Thirty only)	1 RM (One running metre)	4626.00
50	Supplying, laying and jointing <b>UPVC pipes (Unplasticized polyvinyl chloride) schedule-80 grade</b> of approved quality and best variety conforming to BIS of the following dia including cutting, threading and fixing UPVC specials using UPVC adhesives (but excluding cost of such specials) and fixing into wall with teak wood plugs, UPVC clamps and screws making holes on the wall (or) drilling holes in the roof and making good the dismantled portion to original condition with necessary brick work / cement concrete and plastering neatly wherever necessary with necessary scaffolding charges etc., complete complying with standard specifications. The UPVC pipes shall be got approved by Executive Engineer before use on works. <b>Internal - Above Ground level</b>					
a	9.00 RM [Nine running metres]	25mm diameter UPVC PIPE..	Special	220.05 (Rupees Two Hundred Twenty and paise Five only)	1 RM (One running metre)	1980.45
b	11.00 RM [Eleven running metres]	20mm diameter UPVC PIPE..	Special	189.75 (Rupees One Hundred Eighty nine and paise Seventy five only)	1 RM (One running metre)	2087.25

Contractor

Sd /.....  
Executive Engineer,P.W.D  
Buildings (Cand M)Division,Erode

1	2	3	4	5	6	7
51	Supplying, laying and jointing <b>U PVC Specials</b> (Unplasticized polyvinyl chloride) of approved quality and best variety conforming to BIS of the following dia including cutting, threading and fixing UPVC specials using UPVC adhesives (both in internal and external water supply arrangements)Note:Since the labour for cutting,threading/pasting,sundries have already been included under pipe line item of works,no separate provision for fixing UPVC specials needs to be allowed.					
a	8.00 Nos [Eight numbers]	32mm dia UPVC Elbow	Special	41.80 (Rupees Forty one and paise Eighty only)	1 No. (Each)	334.40
b	4.00 Nos [Four numbers]	25mm dia UPVC Elbow	Special	27.80 (Rupees Twenty seven and paise Eighty only)	1 No. (Each)	111.20
c	4.00 Nos [Four numbers]	20mm dia UPVC Elbow	Special	17.10 (Rupees Seventeen and paise Ten only)	1 No. (Each)	68.40
d	4.00 Nos [Four numbers]	32mm dia UPVC Union	Special	85.20 (Rupees Eighty five and paise Twenty only)	1 No. (Each)	340.80
f	5.00 Nos [Five numbers]	25mm dia UPVC Union	Special	63.10 (Rupees Sixty three and paise Ten only)	1 No. (Each)	315.50
g	5.00 Nos [Five numbers]	32x25mm dia UPVC Reducer	Special	26.60 (Rupees Twenty six and paise Sixty only)	1 No. (Each)	133.00
h	5.00 Nos [Five numbers]	25x20mm dia UPVC Reducer	Special	16.10 (Rupees Sixteen and paise Ten only)	1 No. (Each)	80.50
52	5.00 Nos [Five numbers]	Supplying and fixing in position 15mm dia brass <b>screw down tap (heavy duty)</b> of approved make conforming to BIS specifications and quality including cost of shellac, thread, etc., complete complying with standard specification and including cutting and threading wherever necessary. (Taps should be got approved by the Executive Engineer before use on the works)	Special	337.65 (Rupees Three Hundred Thirty seven and paise Sixty five only)	1 No. (Each)	1688.25
53	Supplying and fixing the following size of <b>Gun metal Gate Valve / Wheel Valve (Heavy Type)</b> of approved quality and good variety but including necessary cutting and threading of G.I. pipes for jointing the valves as directed by the departmental officers					

Contractor

Sd /.....  
Executive Engineer,P.W.D  
Buildings (Cand M)Division,Erode

1	2	3	4	5	6	7
a	2.00 Nos [Two numbers]	32 mm diameter GATE VALVE.	Special	1190.80 (Rupees One thousand One Hundred Ninety and paise Eighty only)	1 No. (Each)	2381.60
54	Supplying and fixing in position of best quality <b>PVC/SOIL/ waste pipe</b> (6 Kg / cm <sup>2</sup> ) of following size having ISI mark and providing leak proof joints including fixing to the wall with specials,PVC/ MS clamps etc.,and making connection to all sanitary fittings, dismantling the masonry /R.C.C works wherever necessary and redoing the dismantled portion to the original condition complying with standard specification etc., complete. (The P.V.C.Pipes should be got approved by the Executive Engineer before use on works)					
a	10.00 RM [Ten running metres]	110mm diametre P.V.C. PIPE..	Special	447.65 (Rupees Four Hundred Forty seven and paise Sixty five only)	1 RM (One running metre)	4476.50
b	10.00 RM [Ten running metres]	75mm diametre P.V.C. PIPE..	Special	343.45 (Rupees Three Hundred Forty three and paise Forty five only)	1 RM (One running metre)	3434.50
55	Supplying and fixing in position <b>PVC specials</b> of the following dia and types of approved quality confirming to BIS and providing leak proof joints including fixing to the walls and giving connection to the PVC soil stacks, dismantling the masonry or RCC works and re-doing the dismantled portion to original condition etc., complete complying with standard specifications. (The PVC specials should be got approved by the Executive Engineer before use on works).					
a	4.00 Nos [Four numbers]	110 mm dia PVC Elbow	Special	356.45 (Rupees Three Hundred Fifty six and paise Forty five only)	1 No. (Each)	1425.80
b	2.00 Nos [Two numbers]	75 mm dia PVC Elbow	Special	352.95 (Rupees Three Hundred Fifty two and paise Ninety five only)	1 No. (Each)	705.90
c	2.00 Nos [Two numbers]	110 mm dia PVC Tee	Special	446.05 (Rupees Four Hundred Forty six and paise Five only)	1 No. (Each)	892.10

Contractor

Sd /.....  
Executive Engineer,P.W.D  
Buildings (Cand M)Division,Erode

1	2	3	4	5	6	7
d	2.00 Nos [Two numbers]	75 mm dia PVC Tee	Special	386.45 (Rupees Three Hundred Eighty six and paise Forty five only)	1 No. (Each)	772.90
e	3.00 Nos [Three numbers]	110 mm dia PVC Bend	Special	392.95 (Rupees Three Hundred Ninety two and paise Ninety five only)	1 No. (Each)	1178.85
f	2.00 Nos [Two numbers]	75 mm dia PVC Bend	Special	360.05 (Rupees Three Hundred Sixty and paise Five only)	1 No. (Each)	720.10
56	Supply and laying of following size of Armoured Aluminium / Copper Cables for electrical motor, control panel, pressure switch, jockey motor etc., all incidental charges, necessary scaffolding and re-doing the dismantled portions to its original condition wherever found necessary etc complete as per standard specification and as directed by the Departmental Officers. Make: POLYCAB /PARACON / FINOLEX /EQUIVALENT.					
a	250.00 RM [Two hundred and fifty running metres]	2 core 2.5 sq.mm armoured copper cable	Special	222.00 (Rupees Two Hundred Twenty two only)	1 RM (One running metre)	55500.00
57	0.30 M <sup>3</sup> [Three hundred cubic decimetres]	Supplying and filling <b>40mm guauge HBGS stone jelly</b> for dispersion trench including loading conveying and unloading and as directed by the departmental officers etc. complete complying with standard specification.	Special	1359.30 (Rupees One thousand Three Hundred Fifty nine and paise Thirty only)	1 M <sup>3</sup> [One cubic metre]	407.79
58	0.30 M <sup>3</sup> [Three hundred cubic decimetres]	Supplying and filling <b>25mm guauge HBGS stone jelly</b> for dispersion trench including loading conveying and unloading and as directed by the departmental officers etc. complete complying with standard specification.	Special	1762.30 (Rupees One thousand Seven Hundred Sixty two and paise Thirty only)	1 M <sup>3</sup> [One cubic metre]	528.69
59	3.00 Nos [Three numbers]	Supplying and fixing position CI <b>Nahani Trap</b> / Floor Trap of the following size of 100mmx75mm with best stainless steel gratings of approved brand and quality, fixed over a bed of brick jelly lime concrete 1:2:5 (One part of lime, two part of sand and five part of 40mm gauge brick jelly) and finished with Cement Mortar 1:3 (One Cement, Three sand) including dismantling masonry works wherever found necessary and making good the dismantled portions to the original condition and giving connection to the CI / PVC pipes, etc., complete complying with standard specification. (The Nahani Trap should be got approved by the Executive Engineer before use on works).	Special	746.00 (Rupees Seven Hundred Forty six only)	1 No. (Each)	2238.00

Contractor

Sd /.....  
Executive Engineer,P.W.D  
Buildings (Cand M)Division,Erode

1	2	3	4	5	6	7
60	2.00 Nos [Two numbers]	Supplying and fixing in position Indian make bevelled edge <b>mirror</b> of approved quality and brand PVC / Fibre Glass framed 600 x 450 x 5.5mm thick mirror, shelf type with hard board backing of approved colour fixed with brass screws, rawl plug, etc., complete complying with standard specification. (The mirror should be got approved by the Executive Engineer before use on woks)	69 V, VII-3	957.50 (Rupees Nine Hundred Fifty seven and paise Fifty only)	1 No. (Each)	1915.00
61	3.00 Nos [Three numbers]	Supplying and fixing approved best quality Brass <b>CP towel rail 600mm</b> long and 20mm dia with brackets of same materials including cost of teak wood plugs and CP screws, etc., complete complying with standard specifications. (The tower rail should be got approved by Executive Engineer before use on works).	69 V, VII-3	483.55 (Rupees Four Hundred Eighty three and paise Fifty five only)	1 No. (Each)	1450.65
62	Manufacturing, supplying and fixing Precast Reinforced Cement Concrete slabs of following thickness in RCC 1:2:4 (one cement, two sand and four aggregates), using 20mm HBGS jelly excluding cost of reinforcement steel in position but including cost of moulding charges, casting of slab, finishing, curing and fixing in position in all floors etc., complete complying with standard specification and as directed.					
a	1.36 M <sup>2</sup> [One square metres and thirty six square	50 mm thick precast slab using 20mm HBGS jelly	30&72 V,V(S3) VII.3	500.75 (Rupees Five Hundred and paise Seventy five only)	1 M <sup>2</sup> [One square metre]	681.02
63	1.00 No [One number]	Supplying and fixing PVC <b>ventilating shaft</b> of 110mm dia with 3 metre height including cost of 110mm dia PVC cylindrical cowl of best approved quality etc., complete complying with standard specifications and as directed by the departmental officers	Special	1058.50 (Rupees One thousand Fifty eight and paise Fifty only)	1 No. (Each)	1058.50
64	1.00 No [One number]	Supplying and fixing in position best quality <b>cuddapah sink of size 600 x 450 x 200mm</b> including cost of 32mm dia CP waste coupling, 32mm dia PVC waste pipe with rubber plug and chain, 15mm dia brass nipple including fixing the sink in position and testing for leakages etc., complete complying with standard specifications excluding CI brackets. [The sink and specials should be got approved by the Executive Engineer before use on works]	Special	2147.00 (Rupees Two thousand One Hundred Forty seven only)	1 No. (Each)	2147.00
65	Construction of <b>INSPECTION CHAMBER</b> following clear sizes including earth work excavation,CC 1:5:10 of 10 cm thick and brick work in cement mortar 1:5 [One cement and five crushed stone sand] using best quality of second class table mould bricks of size 9" * 43 / 8 " * 23 / 4" with plastering with cement mortar 1:3 [one cement and three crushed stone sand] 12mm thick to inner and outer sides and wearing coat 1:3:6 [One cement,three crushed stone sand and six aggregate] 15cm thick and covered with precast slab 5cm thick etc.,complete complying with standard specifications and as directed by the departmental officers.					

Contractor

Sd /.....  
Executive Engineer,P.W.D  
Buildings (Cand M)Division,Erode



1	2	3	4	5	6	7
a	2.00 Nos. [Two Numbers]	CLEAR SIZE 0.45X0.45	Special	3917.00 (Rupees Three thousand Nine Hundred Seventeen only)	1 No. (Each)	7834.00
b	3.00 Nos. [Three Numbers]	CLEAR SIZE 0.90X0.90	Special	7869.00 (Rupees Seven thousand Eight Hundred Sixty nine only)	1 No. (Each)	23607.00
<b>Total</b>						<b>4021545.78</b>
<b>12% GST (CGST 6% + SGST 6%)</b>						<b>482585.49</b>
						<b>4504131.27</b>
<b>No of items in the schedule: 65 [Sixty Five only]</b>						
<b>[RUPEES FORTY FIVE LAKH FOUR THOUSAND ONE HUNDRED AND THIRTY ONE AND PAISE TWENTY SEVEN ONLY]</b>						

**Name of work: Construction of new building for Veterinary Dispensary (Under Nabard RIDF XXVII) at Perodu in Erode District.**

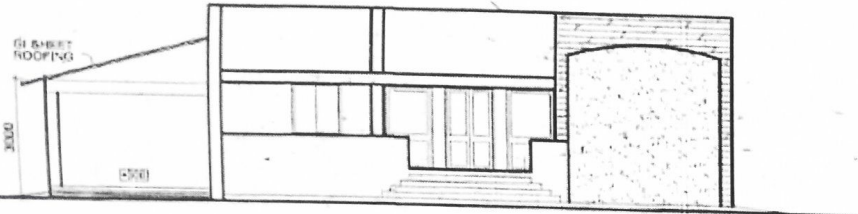
**Total Estimate Amount put to Tender: Rs. 40,21,545.78** (Rupees Forty Lakh Twenty One Thousand Five Hundred and Forty Five and paise Seventy Eight only)

I/We	offer to execute the above work with tender percentage of	Excess/Less (Plus/Minus)
((in words))		

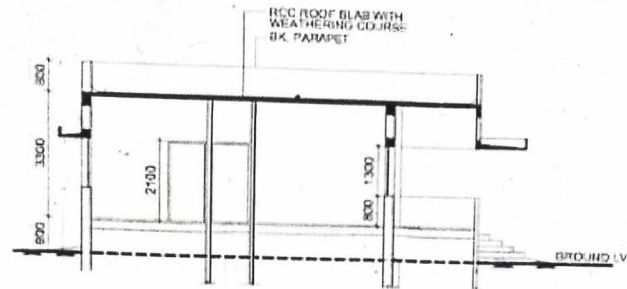
Percentage over the department estimate value of work indicated above. In case of variation in quantity or various items of works during execution. I / we agree that the amount payable for individual items of work will be as per the department unit rates indicated in the tender schedule for the item as varied in accordance with the tender premium and the actual quantity of work done.

Contractor

Sd/.....  
Executive Engineer,P.W.D  
Buildings (Cand M)Division,Erode



ELEVATION



SECTION - AA



GROUND FLOOR PLAN Assistant Engineer P.W.D.  
Buildings (C&M) Taluk Section,  
Erode - 11.

B.B. JULE OF JOINERY					
SL.NO	DOOR	WIDTH	HEIGHT	REMARKS	
1	D	1500	2100	2100 ALUMINUM DOOR 1/3 PANELLLED 2/3 GRILLED	TWO LEAVES
2	D1	1000	2100	2100 CRCA FRAME WITH MDF SHUTTERS.	SINGLE LEAF
3	D2	900	2100	2100 FRP FRAME AND SHUTTER	SINGLE LEAF
4	W1	1200	1300	800 - DO -	THREE SHUTTERS
5	V	900	800	1500 RCC JALLI	
6	FG	1200	1800	200 2100 FIXED GLAZING	

PUBLIC WORKS DEPT.  
TAMILNADU

S NO	NOTES
1	ALL DIMENSIONS ARE IN mm
2	THIS DRAWING HAS BEEN PREPARED BASED ON LR NO. AEE / T-11 / 27-11 / 2013 / DATED: 13.05.2013, FROM C.E.(BULDOGS), PWD, CHEPAUK, CHENNAI
3	PLINTH AREA: GROUND FLOOR 121.55 SQ.M RCC ROOF 34.16 SQ.M GI SHEET ROOF 155.71 SQ.M TOTAL

S NO	REVISION	SIGN	DATE
------	----------	------	------

CHIEF ARCHITECT A/C	
JT. CHIEF ARCHITECT A/C	SENIOR ARCHITECT
ARCHITECT	ASST. ARCHITECT

OFFICE OF THE CHIEF  
ARCHITECT, CHENNAI.

SCALE: 1:100	DATE: 22.05.2013
DEALT: Bhuvana	JOB NO: A - 2605
CHECKED:	DRG.NO: 1

PROPOSED RURAL VETERINARY  
DISPENSARY FOR THE GOVT.  
VETERINARY INSTITUTION.  
(TYPE DESIGN).

PLAN, ELEVATION, SECTION AND SITE PLAN.

காவிரை மருத்துவம்  
காவிரை மருத்துவம்,  
பேரோடு - 638 102.