

TENDER CODING SHEET (RATE EXCLUSIVE OF GST TO BE FILLED UP BY THE TENDERER IN THIS CODING SHEET)					
<b>NAME OF WORK : PROVIDING UPFLOW FILTER SEPTIC TANK FOR THE WORK OF CONSTRUCTION OF 1 NO. OF COMMANDANT, 3 NOS. OF ASSISTANT COMMANDANT, 6 NOS. OF INS, 30 NOS. SI AND 64 NOS. OF PC/HC QUARTERS AND 2 NOS. OF GUEST HOUSE FOR TSP XII BATTALION AT SAKKARAKOTTAI VILLAGE IN RAMANATHAPURAM DISTRICT (GROUP-II)</b>					
<i>Item. No.</i>	<i>Description</i>	<i>Qty</i>	<i>Unit</i>	<i>Rate exclusive of GST in figures and in words</i>	<i>Amount</i>
1.5	Earth work excavation for Open foundation (excluding refilling) a. 0 to 2 mt.	554.80	1 Cum		
	b. 2 to 3 mt.	64.50	1 Cum		
2.6	Supplying and filling with 40mm HBSJ in Foundation and basement	7.40	1 Cum		
2.7	Supplying and filling with 20mm HBSJ in Foundation and basement	7.40	1 Cum		

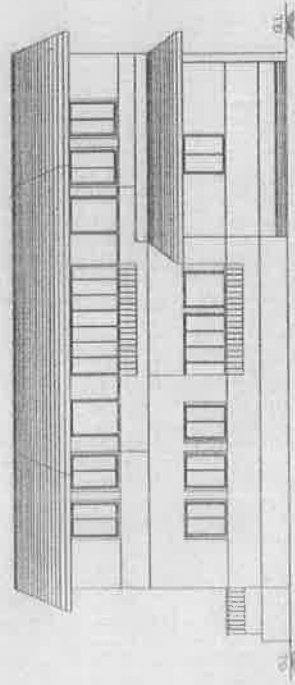
<i>Item. No.</i>	<i>Description</i>	<i>Qty</i>	<i>Unit</i>	<i>Rate exclusive of GST in figures and in words</i>	<i>Amount</i>
<b>13.1</b>	Filling with excavated earth	<b>218.60</b>	<b>1 Cum</b>		
<b>61.1</b>	Supplying, laying the Stone ware pipe with ISI mark superior variety (Glazed) with Spigot and socket ends in dry conditons b. 150 mm dia	<b>135.00</b>	<b>1 Rmt</b>		
<b>238</b>	<b>Electrical arrangements</b> Anticorrosive treatment for steel reinforcement rods	<b>4.246</b>	<b>1 MT</b>		
<b>2.1.3</b>	<b>Annexure</b> Supplying and filling in foundation and basement with Crushed stone sand	<b>12.90</b>	<b>1 Cum</b>		

<i>Item. No.</i>	<i>Description</i>	<i>Qty</i>	<i>Unit</i>	<i>Rate exclusive of GST in figures and in words</i>	<i>Amount</i>
<b>3.1.1</b>	C.C.1:5:10 using 40mm size HBSJ for Foundation & Basement using crushed stone sand	<b>30.10</b>	<b>1 Cum</b>		
<b>3.2.1</b>	P.C.C. 1:2:4 using 20mm size HBSJ for Foundation & Basement and other similar works using crushed stone sand	<b>59.70</b>	<b>1 Cum</b>		
<b>3.10.1</b>	P.C.C. 1:3:6 with 20mm HBSJ using crushed stone sand for foundation and basement	<b>1.80</b>	<b>1 Cum</b>		
<b>4.5.1</b>	Standardized Concrete mix M30 Grade using crushed stone sand a. In Foundation and basement	<b>34.70</b>	<b>1 Cum</b>		

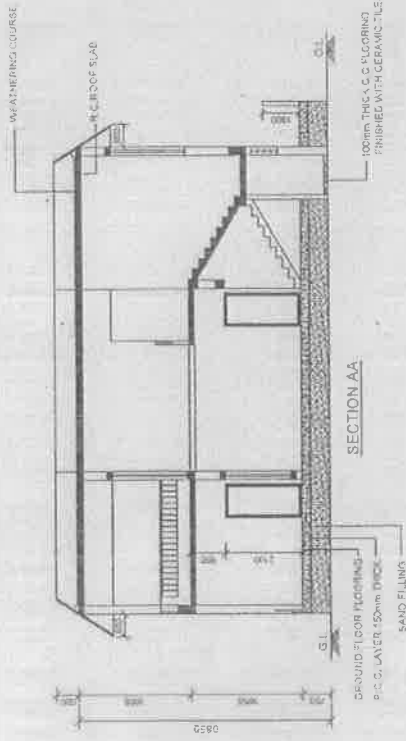
<i>Item. No.</i>	<i>Description</i>	<i>Qty</i>	<i>Unit</i>	<i>Rate exclusive of GST in figures and in words</i>	<i>Amount</i>
<b>6.7.1</b>	Brick work in C.M. 1:5 (F& B) using fly ash bricks of size 23x11x7cm using crushed stone sand	<b>126.50</b>	<b>1 Cum</b>		
<b>10.7.1</b>	Brick partition wall in C.M. 1:4 using fly ash bricks of size 23x11x7 cm 110 mm tk (B.P.) using crushed stone sand a. In Foundation and Basement	<b>38.20</b>	<b>1 Sqm</b>		
<b>14.2.1</b>	Precast Cupboard slab in standardised concrete mix M30 Grade by using 3mm - 10mm HBGS Jelly 40mm Thick a. In Foundation & Basement	<b>21.20</b>	<b>1 Sqm</b>		
<b>18.1</b>	Formwork using M.S.Sheet a. For Column footings, plinth beam, Grade beam, Raftbeam, Raft slab etc.,	<b>90.20</b>	<b>1 Sqm</b>		

<i>Item. No.</i>	<i>Description</i>	<i>Qty</i>	<i>Unit</i>	<i>Rate exclusive of GST in figures and in words</i>	<i>Amount</i>
	b. Plain surfaces such as Roof slab, floor slab, Beams, lintels, lofts, sill slab, staircase, portico slab and other similar works	<b>128.00</b>	<b>1 Sqm</b>		
	d. For Vertical wall	<b>21.70</b>	<b>1 Sqm</b>		
<b>28.1</b>	Floor plastering in C.M. 1:4, 20mm thick. using crushed stone sand	<b>54.70</b>	<b>1 Sqm</b>		
<b>33.1</b>	Plastering in C.M. 1:5, 12 mm tk. using crushed stone sand	<b>458.80</b>	<b>1 Sqm</b>		

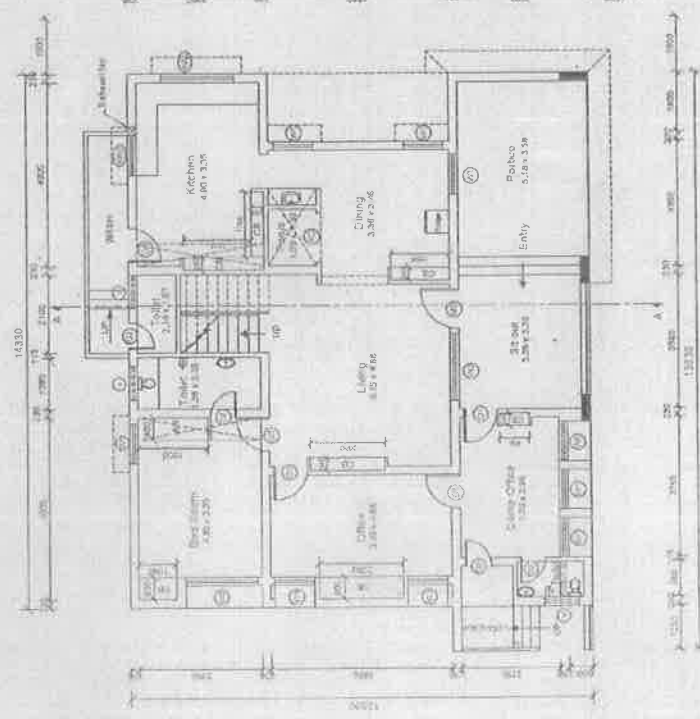
<i>Item. No.</i>	<i>Description</i>	<i>Qty</i>	<i>Unit</i>	<i>Rate exclusive of GST in figures and in words</i>	<i>Amount</i>
<b>34.1</b>	Plastering in C.M. 1:4, 12 mm tk. using crushed stone sand	<b>500.00</b>	<b>1 Sqm</b>		
<b>43.1.1</b>	Supplying, Fabricating and fixing of Mild steel / RTS grills (without cement slurry wash) reinforcement for all sizes of rods (Binding Wire insulated with PVC)	<b>4.246</b>	<b>1 MT</b>		
<b>58.5</b>	Supplying and fixing of PVC (SWR) pipe with ISI mark - type 'A' for Ventilating shaft with cowl a) 110mm dia PVC SWR pipe of 3m with required PVC cowl & PVC specials etc.,	<b>9</b>	<b>Each</b>		
	<b>TOTAL</b>				
<b>(Rupees</b>					
<b>)</b>					



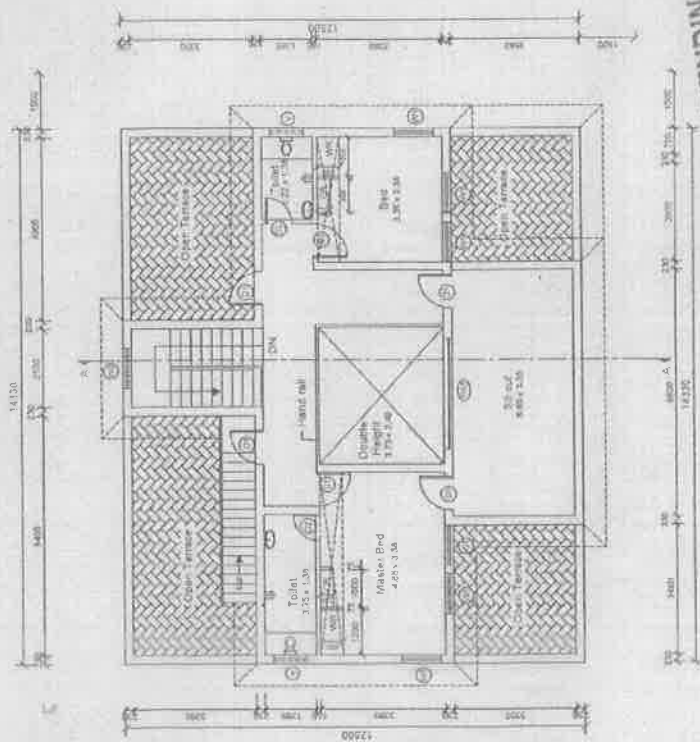
FRONT ELEVATION



SECTION AA



GROUND FLOOR PLAN



FIRST FLOOR PLAN

JOINERY DETAIL	
NO. 1	JOINT
NO. 2	JOINT
NO. 3	JOINT
NO. 4	JOINT
NO. 5	JOINT
NO. 6	JOINT
NO. 7	JOINT
NO. 8	JOINT
NO. 9	JOINT
NO. 10	JOINT
NO. 11	JOINT
NO. 12	JOINT
NO. 13	JOINT
NO. 14	JOINT
NO. 15	JOINT
NO. 16	JOINT
NO. 17	JOINT
NO. 18	JOINT
NO. 19	JOINT
NO. 20	JOINT
NO. 21	JOINT
NO. 22	JOINT
NO. 23	JOINT
NO. 24	JOINT
NO. 25	JOINT
NO. 26	JOINT
NO. 27	JOINT
NO. 28	JOINT
NO. 29	JOINT
NO. 30	JOINT
NO. 31	JOINT
NO. 32	JOINT
NO. 33	JOINT
NO. 34	JOINT
NO. 35	JOINT
NO. 36	JOINT
NO. 37	JOINT
NO. 38	JOINT
NO. 39	JOINT
NO. 40	JOINT
NO. 41	JOINT
NO. 42	JOINT
NO. 43	JOINT
NO. 44	JOINT
NO. 45	JOINT
NO. 46	JOINT
NO. 47	JOINT
NO. 48	JOINT
NO. 49	JOINT
NO. 50	JOINT
NO. 51	JOINT
NO. 52	JOINT
NO. 53	JOINT
NO. 54	JOINT
NO. 55	JOINT
NO. 56	JOINT
NO. 57	JOINT
NO. 58	JOINT
NO. 59	JOINT
NO. 60	JOINT
NO. 61	JOINT
NO. 62	JOINT
NO. 63	JOINT
NO. 64	JOINT
NO. 65	JOINT
NO. 66	JOINT
NO. 67	JOINT
NO. 68	JOINT
NO. 69	JOINT
NO. 70	JOINT
NO. 71	JOINT
NO. 72	JOINT
NO. 73	JOINT
NO. 74	JOINT
NO. 75	JOINT
NO. 76	JOINT
NO. 77	JOINT
NO. 78	JOINT
NO. 79	JOINT
NO. 80	JOINT
NO. 81	JOINT
NO. 82	JOINT
NO. 83	JOINT
NO. 84	JOINT
NO. 85	JOINT
NO. 86	JOINT
NO. 87	JOINT
NO. 88	JOINT
NO. 89	JOINT
NO. 90	JOINT
NO. 91	JOINT
NO. 92	JOINT
NO. 93	JOINT
NO. 94	JOINT
NO. 95	JOINT
NO. 96	JOINT
NO. 97	JOINT
NO. 98	JOINT
NO. 99	JOINT
NO. 100	JOINT

SPECIFICATION

AREA STATEMENT

NOTE

PROPOSED **Commandant**

END

VILLAGE

TOWNSHIP

DISTRICT

State Engineer's Office

State Engineer

Superintending Engineer

South Circle

Madurai-14

Tamil Nadu Police Housing Corporation

Madurai-14

No. OF CORRECTIONS

CONTRACTOR

[illegible]

AREA STATEMENT	
GROUND FLOOR AREA	142.57 Sqm
1st floor	142.57 Sqm
2nd floor	142.57 Sqm
3rd floor	142.57 Sqm
4th floor	142.57 Sqm
5th floor	142.57 Sqm
6th floor	142.57 Sqm
7th floor	142.57 Sqm
8th floor	142.57 Sqm
9th floor	142.57 Sqm
10th floor	142.57 Sqm
11th floor	142.57 Sqm
12th floor	142.57 Sqm
13th floor	142.57 Sqm
14th floor	142.57 Sqm
15th floor	142.57 Sqm
16th floor	142.57 Sqm
17th floor	142.57 Sqm
18th floor	142.57 Sqm
19th floor	142.57 Sqm
20th floor	142.57 Sqm
21st floor	142.57 Sqm
22nd floor	142.57 Sqm
23rd floor	142.57 Sqm
24th floor	142.57 Sqm
25th floor	142.57 Sqm
26th floor	142.57 Sqm
27th floor	142.57 Sqm
28th floor	142.57 Sqm
29th floor	142.57 Sqm
30th floor	142.57 Sqm
31st floor	142.57 Sqm
32nd floor	142.57 Sqm
33rd floor	142.57 Sqm
34th floor	142.57 Sqm
35th floor	142.57 Sqm
36th floor	142.57 Sqm
37th floor	142.57 Sqm
38th floor	142.57 Sqm
39th floor	142.57 Sqm
40th floor	142.57 Sqm
41st floor	142.57 Sqm
42nd floor	142.57 Sqm
43rd floor	142.57 Sqm
44th floor	142.57 Sqm
45th floor	142.57 Sqm
46th floor	142.57 Sqm
47th floor	142.57 Sqm
48th floor	142.57 Sqm
49th floor	142.57 Sqm
50th floor	142.57 Sqm
51st floor	142.57 Sqm
52nd floor	142.57 Sqm
53rd floor	142.57 Sqm
54th floor	142.57 Sqm
55th floor	142.57 Sqm
56th floor	142.57 Sqm
57th floor	142.57 Sqm
58th floor	142.57 Sqm
59th floor	142.57 Sqm
60th floor	142.57 Sqm
61st floor	142.57 Sqm
62nd floor	142.57 Sqm
63rd floor	142.57 Sqm
64th floor	142.57 Sqm
65th floor	142.57 Sqm
66th floor	142.57 Sqm
67th floor	142.57 Sqm
68th floor	142.57 Sqm
69th floor	142.57 Sqm
70th floor	142.57 Sqm
71st floor	142.57 Sqm
72nd floor	142.57 Sqm
73rd floor	142.57 Sqm
74th floor	142.57 Sqm
75th floor	142.57 Sqm
76th floor	142.57 Sqm
77th floor	142.57 Sqm
78th floor	142.57 Sqm
79th floor	142.57 Sqm
80th floor	142.57 Sqm
81st floor	142.57 Sqm
82nd floor	142.57 Sqm
83rd floor	142.57 Sqm
84th floor	142.57 Sqm
85th floor	142.57 Sqm
86th floor	142.57 Sqm
87th floor	142.57 Sqm
88th floor	142.57 Sqm
89th floor	142.57 Sqm
90th floor	142.57 Sqm
91st floor	142.57 Sqm
92nd floor	142.57 Sqm
93rd floor	142.57 Sqm
94th floor	142.57 Sqm
95th floor	142.57 Sqm
96th floor	142.57 Sqm
97th floor	142.57 Sqm
98th floor	142.57 Sqm
99th floor	142.57 Sqm
100th floor	142.57 Sqm
TOTAL	142.57 Sqm

NOTES

1. STAIRCASE: TREAD: 300MM, RISE: 150MM
2. PLINTH HEIGHT 900MM FROM SGL  
(DEPENDS ON SITE CONDITION)
3. SILL LEVEL: 50MM FROM FL
4. LINTEL HEIGHT 2100MM FROM FLOOR LEVEL
5. ROOF HEIGHT 3000MM (INCLUDE SLOPE THK)
6. IT OF PARAPET WALL IN BALCONY (CRACKS IN 100MM  
BALCONY 50MM
7. SUNKEN SLAB FOR W.C. 450MM FOR BATH 100MM
8. ALUMINIUM WINDOWS FOR COASTAL AREA.
9. CURAPPAH SLAB FOR SUNSHADE IN BALCONY
10. WIDTH OF SUNSHADE IN 450MM
11. WIDTH OF KITCHEN SLAB 600MM
12. WIDTH OF WARD ROBE 600MM.
13. KITCHEN SLAB TOP SHOULD BE 50MM FROM FL

S.NO.	VILLAGE	TOWN/TALUK	DISTRICT	PROPOSED Assistant Commandant
1				
2				
3				
4				
5				
6				
7				
8				
9				
10				
11				
12				
13				
14				
15				
16				
17				
18				
19				
20				
21				
22				
23				
24				
25				
26				
27				
28				
29				
30				
31				
32				
33				
34				
35				
36				
37				
38				
39				
40				
41				
42				
43				
44				
45				
46				
47				
48				
49				
50				
51				
52				
53				
54				
55				
56				
57				
58				
59				
60				
61				
62				
63				
64				
65				
66				
67				
68				
69				
70				
71				
72				
73				
74				
75				
76				
77				
78				
79				
80				
81				
82				
83				
84				
85				
86				
87				
88				
89				
90				
91				
92				
93				
94				
95				
96				
97				
98				
99				
100				

and, therefore, the

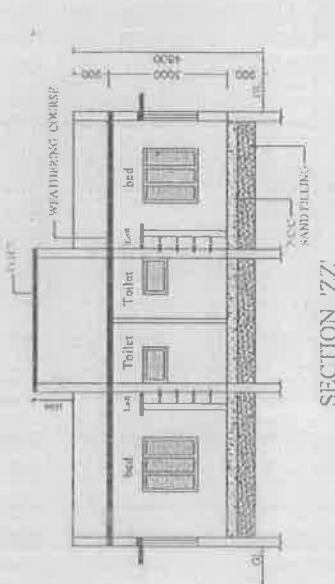
ENGINEER

0011

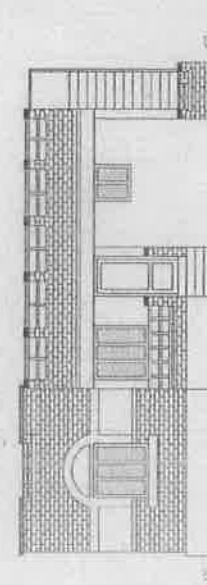
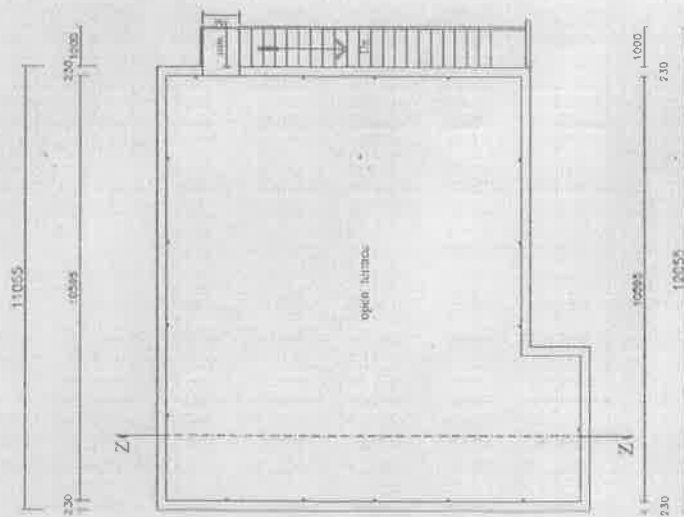
REGISTRATION



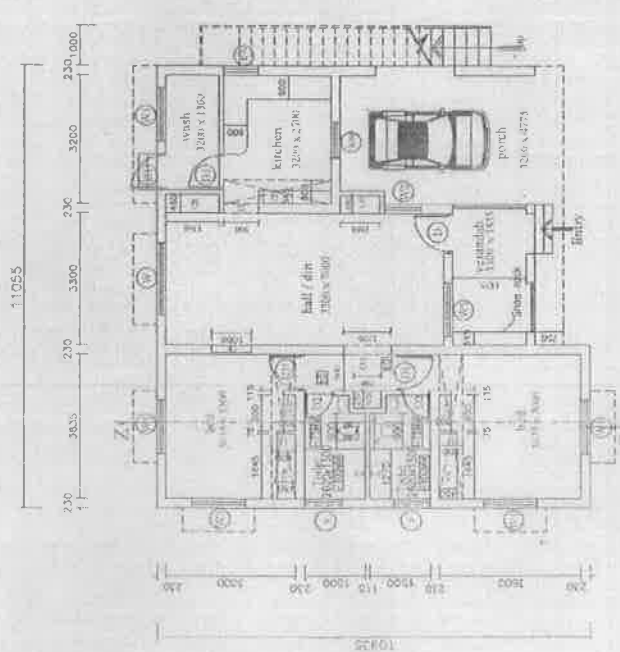
11



SECTION 77



ELEVATION



### GROUND FLOOR PLAN

PI SUPERINTENDING ENGINEER  
SOUTH CIRCLE  
TAMILNADU POLICE HOUSING CORPORATION  
MADRAS  
NO. 132

No. OF CORRECTIONS


CONTRACTOR



[illegible][illegible]

GROUND FLOOR AREA	154.00	52 M
FIRST FLOOR AREA	154.00	
SECOND FLOOR AREA	154.00	
TOTAL AREA	462.00	
AREA PER UNIT 77.00 SQ M (INCLUDING THE STAIRCASE)		

**NOTE**

1.  INDICATES THE LOST POSITION AT UNTIL LEVEL.
2. STAIRCASE: 1- TRAIL-300 MM, REST-167.647 MM.
3. PLUMB HEIGHT: 800 MM FROM INCL. (DEPENDS ON SITE CONDITION)
4. SILL LEVEL: 750 MM FROM FL.
5. UNTIL HEIGHT: 2100 MM FROM FLOOR LEVEL.
6. ROOF HEIGHT: 2850 MM (INCLUDE SLAB THK).

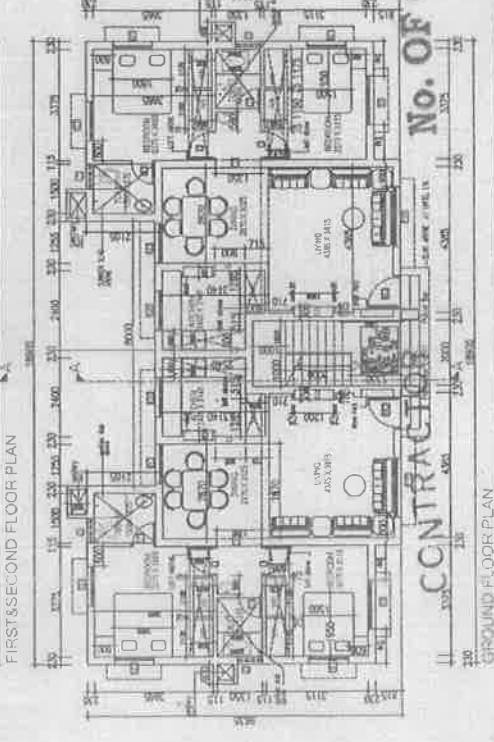
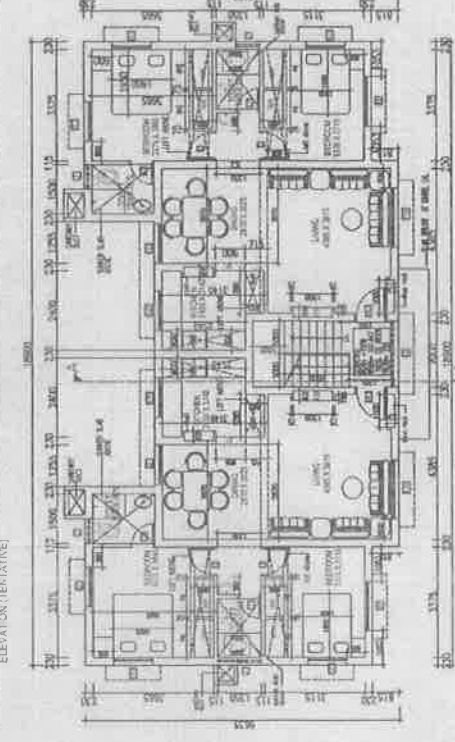
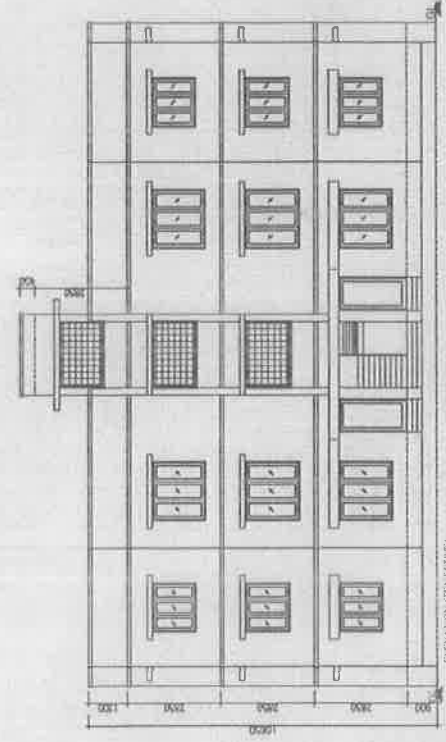
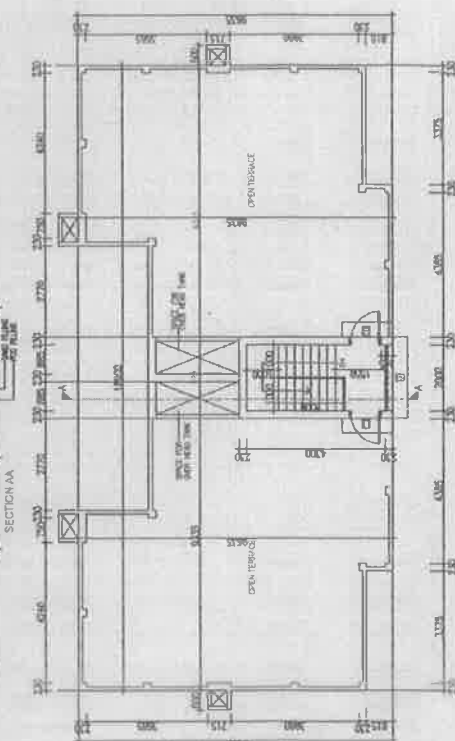
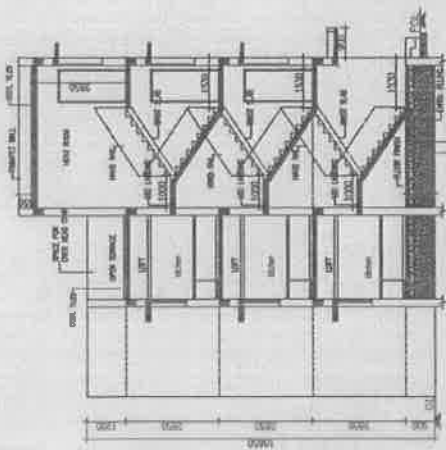
7. HEIGHT OF PARAPET WALL IN BALCONY  
TYPICAL ELEVATION 1200 mm
8. SURFACE SLAB FOR R.C. 450 MM  
FOR BALCONY WALL & BALCONY 50 MM
9. ALUMINUM WINDOWS FOR COASTAL AREA  
AND SLAB SURFACES WITH ANTICORROSION TREATMENT IN  
COASTAL AREA.
10. WIDTH OF SUNSHADE IS 450 MM
11. WIDTH OF KITCHEN SLAB 600 MM, LIFT 800 MM
12. WIDTH OF W.C. ROOM / LIFT 500 MM
13. WIDTH OF BATH ROOM / LIFT 500 MM
14. APPROX SLAB THICKNESS SHOULD BE 80 MM. FLOOR FINISHED LEVEL.

PROPOSED INSOTIS (6 IN 1 - G+2)  
S NO  
VILLAGE  
TOWNTALUK  
DISTRICT

SCALE 1:10	DRAWING NO.	00000000
DATE	0011162015	

01/01/2013 07:20:13 AM / 10/24/2013  
Assessment Worksheet (10/24/2013)

**NATIONAL**  
TAMIL NADU POLICE HOUSING  
CORPORATION LTD.  
NO.10, EVR ROAD,  
MEENALAKKUNTA, CHENNAI-600 010.



	No.	OF	CORRECTIONS
--	-----	----	-------------

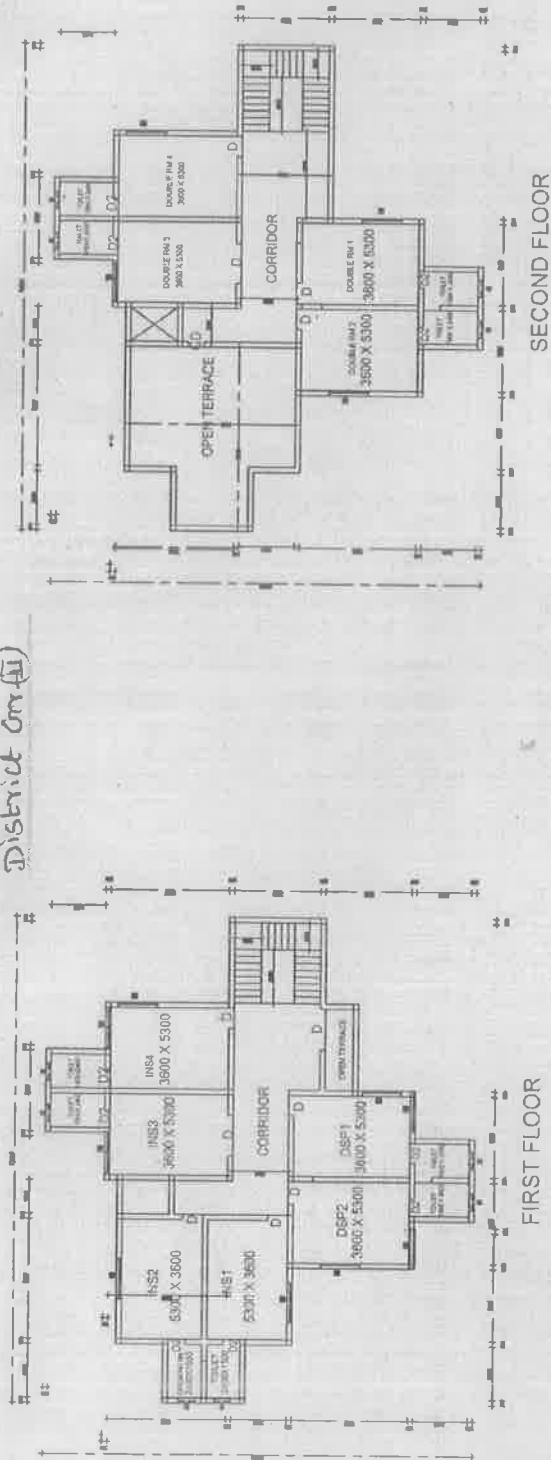
**SUPERINTENDING ENGINEER**  
**SOUTH CIRCLE**  
**TAMILNADU POLICE HOUSING CORP.**  
**CHENNAI-14**  
**MADRAS-14**

 <p><b>TAN KONG HOON &amp; CO.</b>          257, 259, 261, 263, 265, 267, 269, 271, 273, 275, 277, 279, 281, 283, 285, 287, 289, 291, 293, 295, 297, 299, 301, 303, 305, 307, 309, 311, 313, 315, 317, 319, 321, 323, 325, 327, 329, 331, 333, 335, 337, 339, 341, 343, 345, 347, 349, 351, 353, 355, 357, 359, 361, 363, 365, 367, 369, 371, 373, 375, 377, 379, 381, 383, 385, 387, 389, 391, 393, 395, 397, 399, 401, 403, 405, 407, 409, 411, 413, 415, 417, 419, 421, 423, 425, 427, 429, 431, 433, 435, 437, 439, 441, 443, 445, 447, 449, 451, 453, 455, 457, 459, 461, 463, 465, 467, 469, 471, 473, 475, 477, 479, 481, 483, 485, 487, 489, 491, 493, 495, 497, 499, 501, 503, 505, 507, 509, 511, 513, 515, 517, 519, 521, 523, 525, 527, 529, 531, 533, 535, 537, 539, 541, 543, 545, 547, 549, 551, 553, 555, 557, 559, 561, 563, 565, 567, 569, 571, 573, 575, 577, 579, 581, 583, 585, 587, 589, 591, 593, 595, 597, 599, 601, 603, 605, 607, 609, 611, 613, 615, 617, 619, 621, 623, 625, 627, 629, 631, 633, 635, 637, 639, 641, 643, 645, 647, 649, 651, 653, 655, 657, 659, 661, 663, 665, 667, 669, 671, 673, 675, 677, 679, 681, 683, 685, 687, 689, 691, 693, 695, 697, 699, 701, 703, 705, 707, 709, 711, 713, 715, 717, 719, 721, 723, 725, 727, 729, 731, 733, 735, 737, 739, 741, 743, 745, 747, 749, 751, 753, 755, 757, 759, 761, 763, 765, 767, 769, 771, 773, 775, 777, 779, 781, 783, 785, 787, 789, 791, 793, 795, 797, 799, 801, 803, 805, 807, 809, 811, 813, 815, 817, 819, 821, 823, 825, 827, 829, 831, 833, 835, 837, 839, 841, 843, 845, 847, 849, 851, 853, 855, 857, 859, 861, 863, 865, 867, 869, 871, 873, 875, 877, 879, 881, 883, 885, 887, 889, 891, 893, 895, 897, 899, 901, 903, 905, 907, 909, 911, 913, 915, 917, 919, 921, 923, 925, 927, 929, 931, 933, 935, 937, 939, 941, 943, 945, 947, 949, 951, 953, 955, 957, 959, 961, 963, 965, 967, 969, 971, 973, 975, 977, 979, 981, 983, 985, 987, 989, 991, 993, 995, 997, 999, 1001, 1003, 1005, 1007, 1009, 1011, 1013, 1015, 1017, 1019, 1021, 1023, 1025, 1027, 1029, 1031, 1033, 1035, 1037, 1039, 1041, 1043, 1045, 1047, 1049, 1051, 1053, 1055, 1057, 1059, 1061, 1063, 1065, 1067, 1069, 1071, 1073, 1075, 1077, 1079, 1081, 1083, 1085, 1087, 1089, 1091, 1093, 1095, 1097, 1099, 1101, 1103, 1105, 1107, 1109, 1111, 1113, 1115, 1117, 1119, 1121, 1123, 1125, 1127, 1129, 1131, 1133, 1135, 1137, 1139, 1141, 1143, 1145, 1147, 1149, 1151, 1153, 1155, 1157, 1159, 1161, 1163, 1165, 1167, 1169, 1171, 1173, 1175, 1177, 1179, 1181, 1183, 1185, 1187, 1189, 1191, 1193, 1195, 1197, 1199, 1201, 1203, 1205, 1207, 1209, 1211, 1213, 1215, 1217, 1219, 1221, 1223, 1225, 1227, 1229, 1231, 1233, 1235, 1237, 1239, 1241, 1243, 1245, 1247, 1249, 1251, 1253, 1255, 1257, 1259, 1261, 1263, 1265, 1267, 1269, 1271, 1273, 1275, 1277, 1279, 1281, 1283, 1285, 1287, 1289, 1291, 1293, 1295, 1297, 1299, 1301, 1303, 1305, 1307, 1309, 1311, 1313, 1315, 1317, 1319, 1321, 1323, 1325, 1327, 1329, 1331, 1333, 1335, 1337, 1339, 1341, 1343, 1345, 1347, 1349, 1351, 1353, 1355, 1357, 1359, 1361, 1363, 1365, 1367, 1369, 1371, 1373, 1375, 1377, 1379, 1381, 1383, 1385, 1387, 1389, 1391, 1393, 1395, 1397, 1399, 1401, 1403, 1405, 1407, 1409, 1411, 1413, 1415, 1417, 1419, 1421, 1423, 1425, 1427, 1429, 1431, 1433, 1435, 1437, 1439, 1441, 1443, 1445, 1447, 1449, 1451, 1453, 1455, 1457, 1459, 1461, 1463, 1465, 1467, 1469, 1471, 1473, 1475, 1477, 1479, 1481, 1483, 1485, 1487, 1489, 1491, 1493, 1495, 1497, 1499, 1501, 1503, 1505, 1507, 1509, 1511, 1513, 1515, 1517, 1519, 1521, 1523, 1525, 1527, 1529, 1531, 1533, 1535, 1537, 1539, 1541, 1543, 1545, 1547, 1549, 1551, 1553, 1555, 1557, 1559, 1561, 1563, 1565, 1567, 1569, 1571, 1573, 1575, 1577, 1579, 1581, 1583, 1585, 1587, 1589, 1591, 1593, 1595, 1597, 1599, 1601, 1603, 1605, 1607, 1609, 1611, 1613, 1615, 1617, 1619, 1621, 1623, 1625, 1627, 1629, 1631, 1633, 1635, 1637, 1639, 1641, 1643, 1645, 1647, 1649, 1651, 1653, 1655, 1657, 1659, 1661, 1663, 1665, 1667, 1669, 1671, 1673, 1675, 1677, 1679, 1681, 1683, 1685, 1687, 1689, 1691, 1693, 1695, 1697, 1699, 1701, 1703, 1705, 1707, 1709, 1711, 1713, 1715, 1717, 1719, 1721, 17</p>
---

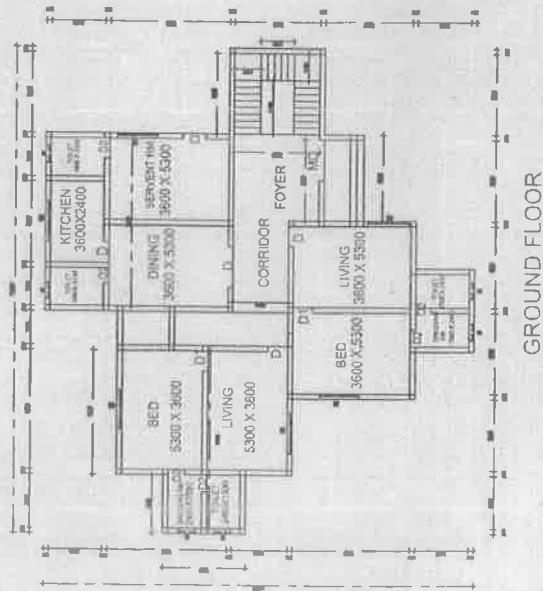




Construction of Guest House for Sakkaravottai in Ramarathapuram District (M)



GUEST HOUSE



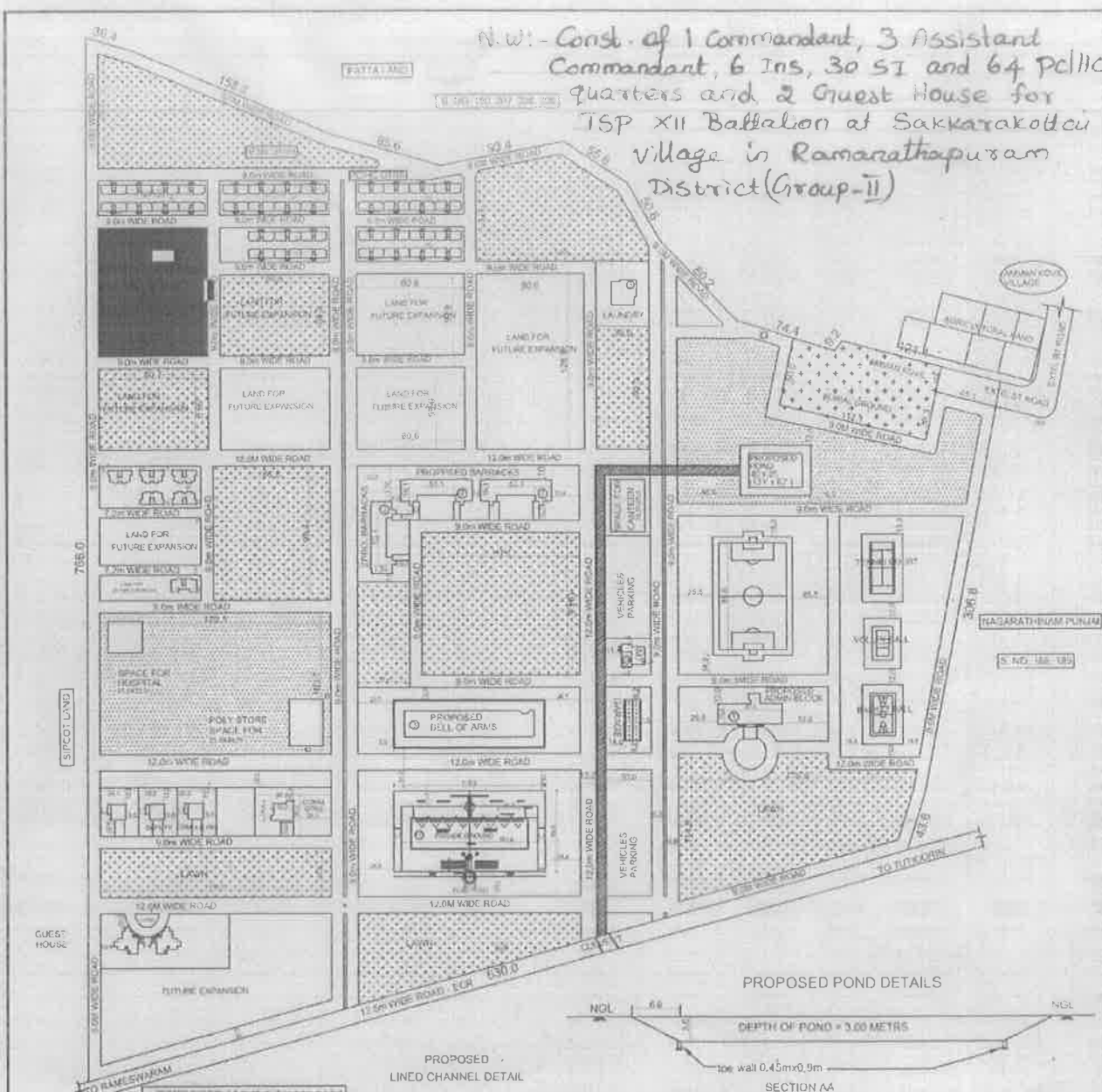
CONTRACTOR

No. OF CORRECTIONS

SUPERINTENDING ENGINEER  
SOUTH CIRCLE  
TAMILNADU POLICE HOUSING CORPORATION LTD.  
MADURAI-14.



N.W. - Const. of 1 Commandant, 3 Assistant Commandant, 6 Ins, 30 SI and 64 PCLIC quarters and 2 Guest House for TSP XII Battalion at Sakkarakottu village in Ramarathapuram District (Group-II)



TYPE OF SOLVENT SYSTEM	NO. OF POLYMER SOLUBLE	NO. OF POLYMER INSOLUBLE	NO. OF POLYMER SOLUBLE	AREA PERCENT
CHLOROFORM	5	4	2	22.7%
DIETHYL ETHER	5	4	1	17.6%
BENZENE	1	5	5	46.2%
THIOPHENE	0	2	0	8.6%
THIOPHENE-2-THIOL	0	2	3	14.7%
GLASSY POLYMER	1	1	0	6.7%

FUTURE QUARTERS (REQUIRED)				FUTURE QUANTITIES			
TYPE OF BLUMBERG (STOKS)	NO OF BLOBS	NO OF GIFTS	NO OF FLOORS	NO OF BLOBS	NO OF GIFTS	NO OF FLOORS	AREA SQU.M
COMPONENT							
DEEP COMPONENT	2	3	8	3	3	11	115.12
RELIEF	1	6	30	5	12	61	624.30
INTERFILL	0	32	16	3	7	31	184.50
ACCELERATE	0	200	100	4	24	52	5615.30
STANDARD CURVE	2	2	2	10	455	542	23630.70
TOTAL	5	347	217	TOTAL	507	646	31165.92

FUTURE			REVISIONS		DATE
(A)	QUEST HOUSE - 40 NOS	1	G+1	2655.54	REVISION NO. 1
(B)	QUEST HOUSE - 10 NOS	1	G+1	916.74	THE LATEST SUPPLEMENT PREVIOUS APPROVED TO WORK ON DATED 15.04.2018
(C)	M Y SHEET	1	G	249.70	THE FOLLOWING REVISIONS ARE MADE IN DEDUCTION :
(D)	GARAGE	1	G	349.48	AS PER THE DEDUCTION OF THE COST PRICE
(E)	GUARD ROOM	1	G	126.44	GENERALLY REVERSED
(F)	PARADE GROUND	1			

PROPOSED					AREA STATEMENT
BLOCKS	TYPE OF STRUCTURE	NO OF BLOCKS	NO OF FLOORS	AREA (Sqm)	SITE AREA = 32500.00 Sqm (75 ACRYG) PROPOSED BUILT AREA = 9202.59 Sqm
1	ADMINISTRATIVE BLOCK	1	04	2214.58	
2	WORKSHOPS	3	04	8218.00	
3	BELL OF ARMS	1	03	1660.21	
4	LAND REFORM CELL				
				3792.79	
Proposed <input type="checkbox"/> Gate <input type="checkbox"/> Road <input type="checkbox"/>					

SAKKARAKOTTAI - TSF XII B BATTALION

PROPOSED DETAILS MARKED IN THE LAYOUT SUCH AS  
CULTIVATION, OPEN AND RICH THIRUPINGS POND

SURVEY NO. 37481

VILLAGE SAKKARAKOTTAI

TOWNSHIP RAMNAD

DISTRICT RAMNAD

Sd/- <b>CHANDAN</b> <b>ASST ARCHTCT</b>	Sr/- <b>CHANDAN</b> <b>Asst Archt Supt</b>	Sr/- <b>CHANDAN</b> <b>Asst Archt Supt</b>
Sd/- <b>CHANDAN</b> <b>Supt Engineer (C)</b>	Sr/- <b>CHANDAN</b> <b>Chief Engineer</b>	
	Sd/- <b>CHANDAN</b> <b>Asst Archt Supt</b>	 <b>TAMIL NADU POLICE HOUSING CORPORATION LIMITED</b> 100, Anna Salai, Chennai-600 002

### PROPOSED POND DETAILS

PROPOSED  
LINED CHANNEL DETAIL

SECTION A

PROPOSED POND  
40 x 25  
(131' x 82')

PLAN OF POND

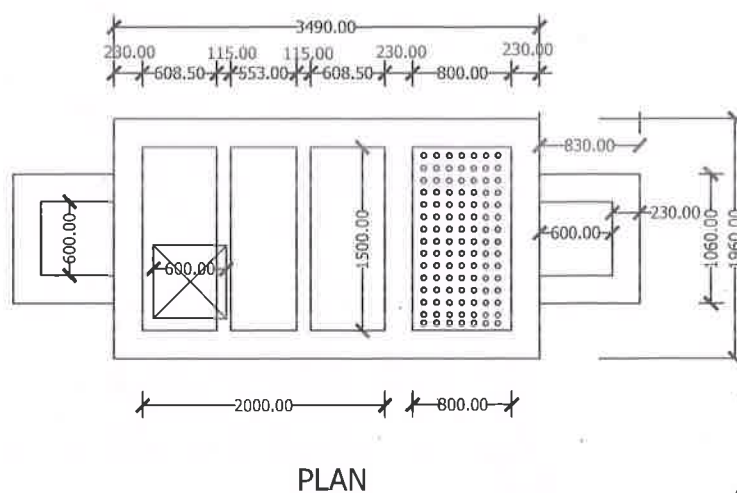
CONTRACTOR

No. OF CORRECTIONS

**SUPERINTENDING ENGINEER  
SOUTH CIRCLE  
TAMILNADU POLICE HOUSING CORPORATION LTD.,  
MADURAI-14.**

TAMILNADU POLICE HOUSING CORPORATION LTD.,  
MADURAI-14.

size of the septic tank  
2.00x1.50mx2.00m



ALL DIMENSIONS ARE IN MM

**SUPERINTENDING ENGINEER  
SOUTH CIRCLE  
TAMILNADU POLICE HOUSING CORPORATION LTD.,  
MADURAI-14.**

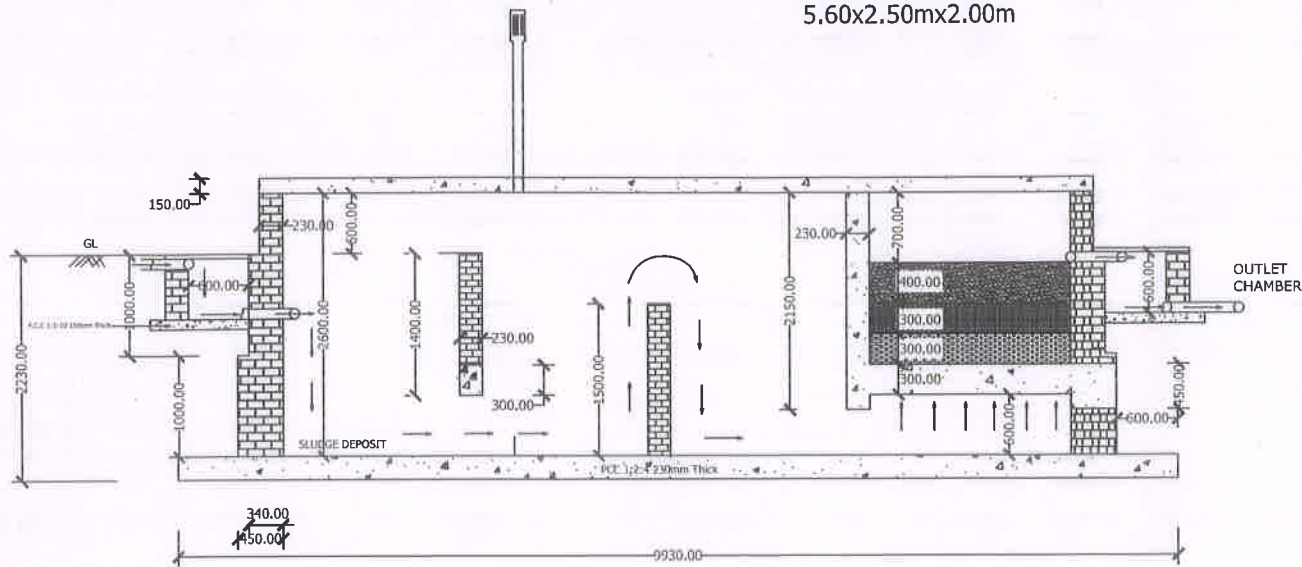
**SUPERINTENDING ENGINEER  
SOUTH CIRCLE  
TAMILNADU POLICE HOUSING CORPORATION LTD.,  
MADURAI-14.**



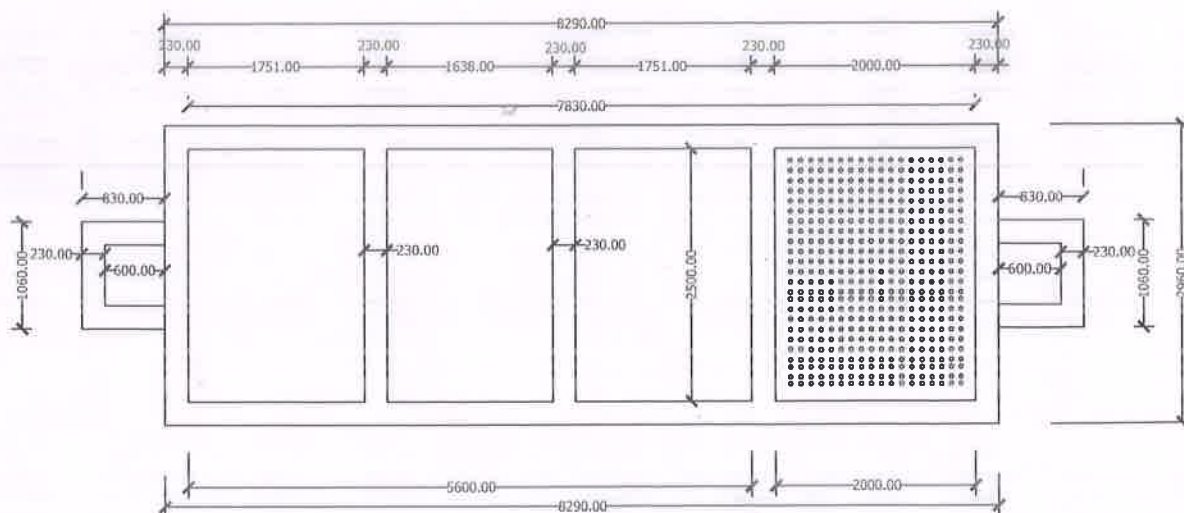
# **SEPTIC TANK FOR SUB INSPECTOR QUARTERS**

size of the septic tank

5.60x2.50mx2.00m



**CROSS SECTION**



**PLAN**

ALL DIMENSIONS ARE IN MM

CONTRACTOR

No. OF CORRECTIONS

**SUPERINTENDING ENGINEER**  
**SOUTH CIRCLE**

**TAMILNADU POLICE HOUSING CORPORATION LTD.,**  
**MADURAI-14.**