

TENDER CODING SHEET (RATE EXCLUSIVE OF GST TO BE FILLED UP BY THE TENDERER IN THIS CODING SHEET)					
NAME OF WORK : PROVIDING CUPBOARD SHUTTERS FOR THE WORK OF CONSTRUCTION OF 236 NOS. OF PC/HC QUARTERS FOR TSP XII BATTALION AT SAKKARAKOTTAI VILLAGE IN RAMANATHAPURAM DISTRICT (GROUP-I)					
<i>Item. No.</i>	<i>Description</i>	<i>Qty</i>	<i>Unit</i>	<i>Rate exclusive of GST in figures and in words</i>	<i>Amount</i>
22.3.3	Cup board/ward robes double leaf shutters using 9mm thick phenol bonded BWR grade plywood, TW frames, styles & rails including two coat enamel paint over one coat primer with brass screws	1065.60	1 Sqm		
	TOTAL				
(Rupees					
)					

TERRACE FLOOR PLAN

The plan shows two symmetrical apartment units, each with a central hall and a staircase. The left unit includes:

- BED-1 (34'0" x 10'0")
- BED-2 (31'0" x 10'0")
- KITCHEN (10'0" x 10'0")
- BATH (5'0" x 7'0")
- HALL (10'0" x 10'0")
- STAIRS (10'0" x 10'0")

The right unit includes:

- BED-1 (34'0" x 10'0")
- BED-2 (31'0" x 10'0")
- KITCHEN (10'0" x 10'0")
- BATH (5'0" x 7'0")
- HALL (10'0" x 10'0")
- STAIRS (10'0" x 10'0")

Overall dimensions for the units are 32'5" and 47'11". The plan also shows common areas like a central staircase and a central hall.

SUPERINTENDING ENGINEER
SOUTH CIRCLE
MAMILNADU POLICE HOUSING CORPORATION LIMITED
MADURAI-14.

No. OF CORRECTIONS

KAMLNADU POLICE HOUSING CORPORATION LTD

RADICAL-14.

Revisions made in: DG/SYS/2011

The following revisions are made:

- The following revisions are made :
1. ~~Specifications~~ for certain items revised
 2. Weathering course is replaced by coal tiles
 3. Roof with mild slope (1:60) is provided
 4. The main door position is changed
 5. Entrance verandah for each unit is provided
 6. Staircase position is changed.
 7. Porcelain wall height revised from 1m to 1.2m

ITEM	DESCRIPTION	SIZE
M2	RAIN DOWN-TW FRAME WITH DOWN SHUTTER	1000x2100
D	REC DOWN FRAME WITH DOWN SHUTTER	350x1600
D1	PVC DOWN FRAME	760x1600
D2	AL DOWN FRAME	900x2100
F	SL SHUTTER	1000x1750
W1	DOWN SHUTTER	1400x2100
W2	DOWN SHUTTER	1320x1600
J	REC DRAIN	700x 800
J1	REC DRAIN 2ND QTR FROM LANDING	1500x1750
C	AL DRAIN	1500x1750

TOILET	GLASS/PAVE.
SLIP-RESISTANT	SEMI-SHINY IN CM 15.
ROOF	GLASS SLAB WITH THERMO INSULATION AND PROTECTED WITH COOL FLEES.
	WALL CLIMATE OF 15°C TO BE PROVIDED.
JUNCTION	WOODEN FLOORING/ POLYSTYRENE.
FLOORING	GRANITE TILE FLOORING FOR ALL ROOMS. WOODEN CERAMIC TILE FLOORING FOR BOTH A AND B WITH GRANITE TILES TO THE HEIGHT OF 15M.
	GRANITE TILE
KITCHEN	
WATER SLAB	GLASS/PAVE 30CM
CLAYED SLAB	OR GLASS / GLASS/PAVE
PAINTING	PRIMER-SEAL WITH COAT OF PRIMER OUTER-PLASTIC EMULSION PAINT WITH ONE COAT OF PRIMER
	STICK WITH HIGH GLOSS COLOUR GLAZ
G.M.T	

	50 M
GROUND FLOOR AREA	121.14
FIRST FLOOR AREA	121.14
SECOND FLOOR AREA	121.14
THIRD FLOOR AREA	121.14
TOTAL AREA	<u>484.56</u>
AREA PER UNIT - 60.57 SQ.M (652 SF)	
INCLUDING THE STAIRCASE	


1. **STAIRS** LOCATED THE LEFT POSITION AT ENTRY LEVEL.
2. **CLIMBING** - 2000-3000 MM. NEAR-100 MM.
3. **PLANCH HEIGHT** 300 MM FROM FLOOR.
4. **CLIMBING** OF 300 MM FROM FLOOR.
5. **CLIMBING** 200 MM FROM FLOOR.
6. **CLIMBING** HEIGHT 2100 MM FROM FLOOR LEVEL.
7. **CLIMBING** HEIGHT 2800 MM (INCLUDE SLAB THK).
8. **HEIGHT** OF PROPERTY WAS IN BALCONY.
9. **CLIMBING** OF 100 MM.
10. **CLIMBING** SLAB FOR W.C AND AM.
11. **CLIMBING** HEIGHTS FOR CLIMBING.
12. **CLIMBING** HEIGHTS WITH ANATOMICAL TREATMENT IN
13. **CLIMBING** OF 400 MM.
14. **CLIMBING** OF 300 MM FROM LEFT POSITION.
15. **CLIMBING** OF 100 MM FROM FLOOR.
16. **CLIMBING** OF 100 MM FROM FLOOR.
17. **CLIMBING** OF 100 MM FROM FLOOR.
18. **CLIMBING** OF 100 MM FROM FLOOR.
19. **CLIMBING** OF 100 MM FROM FLOOR.
20. **CLIMBING** OF 100 MM FROM FLOOR.
21. **CLIMBING** OF 100 MM FROM FLOOR.
22. **CLIMBING** OF 100 MM FROM FLOOR.
23. **CLIMBING** OF 100 MM FROM FLOOR.
24. **CLIMBING** OF 100 MM FROM FLOOR.
25. **CLIMBING** OF 100 MM FROM FLOOR.
26. **CLIMBING** OF 100 MM FROM FLOOR.
27. **CLIMBING** OF 100 MM FROM FLOOR.
28. **CLIMBING** OF 100 MM FROM FLOOR.
29. **CLIMBING** OF 100 MM FROM FLOOR.
30. **CLIMBING** OF 100 MM FROM FLOOR.
31. **CLIMBING** OF 100 MM FROM FLOOR.
32. **CLIMBING** OF 100 MM FROM FLOOR.
33. **CLIMBING** OF 100 MM FROM FLOOR.
34. **CLIMBING** OF 100 MM FROM FLOOR.
35. **CLIMBING** OF 100 MM FROM FLOOR.
36. **CLIMBING** OF 100 MM FROM FLOOR.
37. **CLIMBING** OF 100 MM FROM FLOOR.
38. **CLIMBING** OF 100 MM FROM FLOOR.
39. **CLIMBING** OF 100 MM FROM FLOOR.
40. **CLIMBING** OF 100 MM FROM FLOOR.
41. **CLIMBING** OF 100 MM FROM FLOOR.
42. **CLIMBING** OF 100 MM FROM FLOOR.
43. **CLIMBING** OF 100 MM FROM FLOOR.
44. **CLIMBING** OF 100 MM FROM FLOOR.
45. **CLIMBING** OF 100 MM FROM FLOOR.
46. **CLIMBING** OF 100 MM FROM FLOOR.
47. **CLIMBING** OF 100 MM FROM FLOOR.
48. **CLIMBING** OF 100 MM FROM FLOOR.
49. **CLIMBING** OF 100 MM FROM FLOOR.
50. **CLIMBING** OF 100 MM FROM FLOOR.
51. **CLIMBING** OF 100 MM FROM FLOOR.
52. **CLIMBING** OF 100 MM FROM FLOOR.
53. **CLIMBING** OF 100 MM FROM FLOOR.
54. **CLIMBING** OF 100 MM FROM FLOOR.
55. **CLIMBING** OF 100 MM FROM FLOOR.
56. **CLIMBING** OF 100 MM FROM FLOOR.
57. **CLIMBING** OF 100 MM FROM FLOOR.
58. **CLIMBING** OF 100 MM FROM FLOOR.
59. **CLIMBING** OF 100 MM FROM FLOOR.
60. **CLIMBING** OF 100 MM FROM FLOOR.
61. **CLIMBING** OF 100 MM FROM FLOOR.
62. **CLIMBING** OF 100 MM FROM FLOOR.
63. **CLIMBING** OF 100 MM FROM FLOOR.
64. **CLIMBING** OF 100 MM FROM FLOOR.
65. **CLIMBING** OF 100 MM FROM FLOOR.
66. **CLIMBING** OF 100 MM FROM FLOOR.
67. **CLIMBING** OF 100 MM FROM FLOOR.
68. **CLIMBING** OF 100 MM FROM FLOOR.
69. **CLIMBING** OF 100 MM FROM FLOOR.
70. **CLIMBING** OF 100 MM FROM FLOOR.
71. **CLIMBING** OF 100 MM FROM FLOOR.
72. **CLIMBING** OF 100 MM FROM FLOOR.
73. **CLIMBING** OF 100 MM FROM FLOOR.
74. **CLIMBING** OF 100 MM FROM FLOOR.
75. **CLIMBING** OF 100 MM FROM FLOOR.
76. **CLIMBING** OF 100 MM FROM FLOOR.
77. **CLIMBING** OF 100 MM FROM FLOOR.
78. **CLIMBING** OF 100 MM FROM FLOOR.
79. **CLIMBING** OF 100 MM FROM FLOOR.
80. **CLIMBING** OF 100 MM FROM FLOOR.
81. **CLIMBING** OF 100 MM FROM FLOOR.
82. **CLIMBING** OF 100 MM FROM FLOOR.
83. **CLIMBING** OF 100 MM FROM FLOOR.
84. **CLIMBING** OF 100 MM FROM FLOOR.
85. **CLIMBING** OF 100 MM FROM FLOOR.
86. **CLIMBING** OF 100 MM FROM FLOOR.
87. **CLIMBING** OF 100 MM FROM FLOOR.
88. **CLIMBING** OF 100 MM FROM FLOOR.
89. **CLIMBING** OF 100 MM FROM FLOOR.
90. **CLIMBING** OF 100 MM FROM FLOOR.
91. **CLIMBING** OF 100 MM FROM FLOOR.
92. **CLIMBING** OF 100 MM FROM FLOOR.
93. **CLIMBING** OF 100 MM FROM FLOOR.
94. **CLIMBING** OF 100 MM FROM FLOOR.
95. **CLIMBING** OF 100 MM FROM FLOOR.
96. **CLIMBING** OF 100 MM FROM FLOOR.
97. **CLIMBING** OF 100 MM FROM FLOOR.
98. **CLIMBING** OF 100 MM FROM FLOOR.
99. **CLIMBING** OF 100 MM FROM FLOOR.
100. **CLIMBING** OF 100 MM FROM FLOOR.

S.NO.
VILLAGE
TOMUTALUK
DISTRICT

SCALE: 1:50	DRAWING NO.	REVISION NO.
DATE:	DD37091/2015	

507	507	507	507
01-04-00-11	01-04-00-11	01-04-00-11	01-04-00-11

10/24/2015 10/24/2015 10/24/2015	10/24/2015 10/24/2015 10/24/2015
--	--



TAMIL NADU POLICE HOUSING CORPORATION LTD.

1. 720 2. 720 3. 720 4. 720 5. 720 6. 720 7. 720 8. 720 9. 720 10. 720 11. 720 12. 720 13. 720 14. 720 15. 720 16. 720 17. 720 18. 720 19. 720 20. 720 21. 720 22. 720 23. 720 24. 720 25. 720 26. 720 27. 720 28. 720 29. 720 30. 720 31. 720 32. 720 33. 720 34. 720 35. 720 36. 720 37. 720 38. 720 39. 720 40. 720 41. 720 42. 720 43. 720 44. 720 45. 720 46. 720 47. 720 48. 720 49. 720 50. 720 51. 720 52. 720 53. 720 54. 720 55. 720 56. 720 57. 720 58. 720 59. 720 60. 720 61. 720 62. 720 63. 720 64. 720 65. 720 66. 720 67. 720 68. 720 69. 720 70. 720 71. 720 72. 720 73. 720 74. 720 75. 720 76. 720 77. 720 78. 720 79. 720 80. 720 81. 720 82. 720 83. 720 84. 720 85. 720 86. 720 87. 720 88. 720 89. 720 90. 720 91. 720 92. 720 93. 720 94. 720 95. 720 96. 720 97. 720 98. 720 99. 720 100. 720

SECTION -AA

TERRACE FLOOR PLAN

FIRST, SECOND FLOOR PLAN

GROUND FLOOR PLAN

THE NEW GEORGIA SUBSTATION 00/000/11

The following revisions are made :

- 1.Specifications for certain Rovers revised
- 2.Woodworking course is replaced by cool tiles
- 3.Roof with mild slope (1:80) is provided
- 4.The main door position is changed.
- 5.Entrance verandah for each unit is provided.
- 6.Staircase position is changed.
- 7.Pavement width revised from 1m to 1.2m


SCHEDULE OF JOINERY		
TYPE	DESCRIPTION	SIZE
M	MAIN DOOR 1/2 FRAME WITH TEAK WOOD SHUTTER	1000x2110
D	BCC DOOR FRAME WITH BMS SHUTTER	900x2110
O1	PVC SOLID DOOR	750x2110
		900x2110
M	MS GRILL DOOR	1500x1350
W	MS WINDOW	1500x1350
	DO	1500x1350
	DO	1500x1350
J	BCC ALU	1500x1350
J1	BCC ALU 250 BELL FROM LANDING	1500x1350
O	MS GRILL	1500x1350

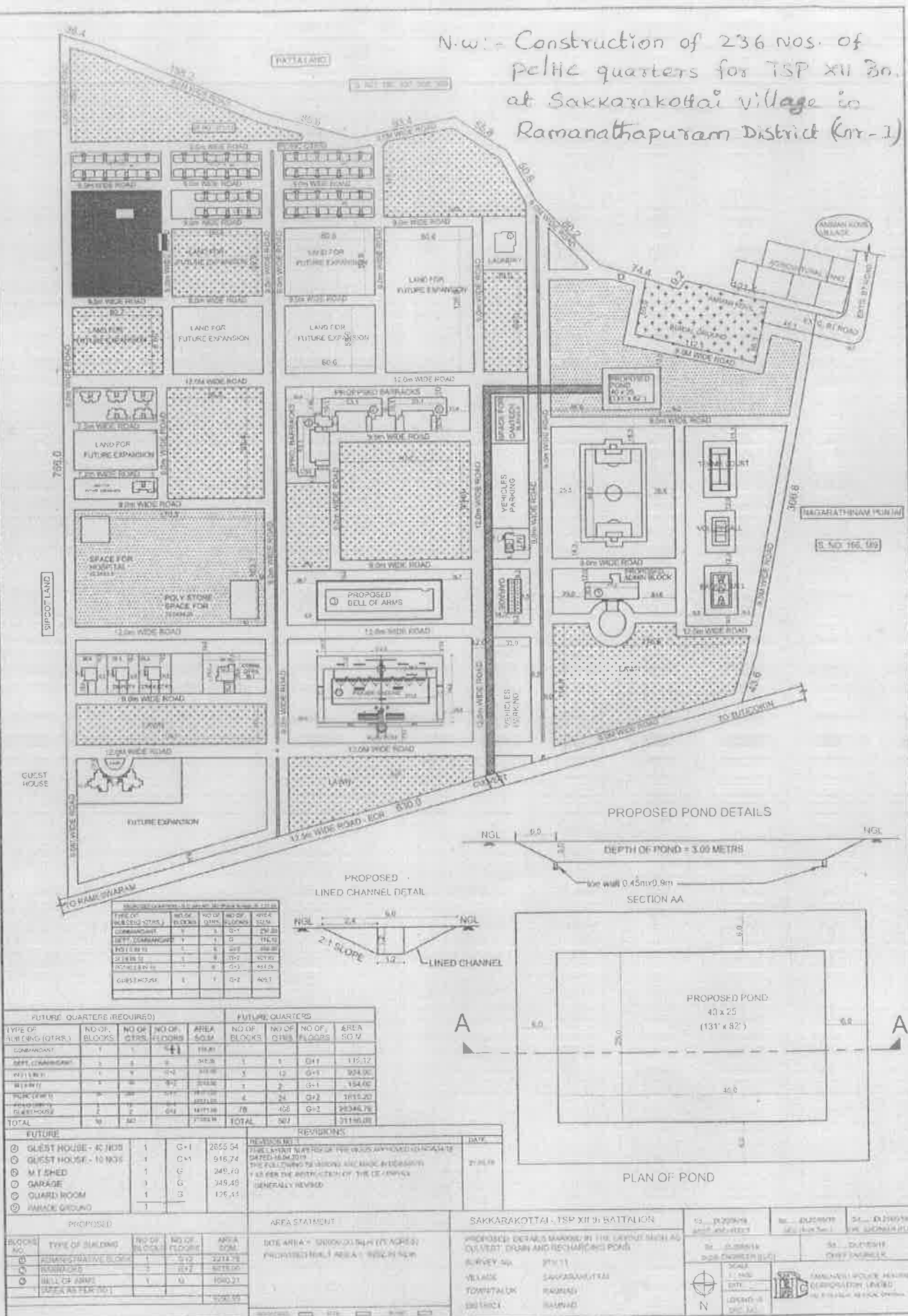
SPECIFICATION	
TOILET/SHOWER	CERAMIC/GRANITE
SLAB STRUCTURE	GRANITE WORKS IN CAN 1/4"
ROOF	1/4" SLAB WITH QUARTZITE REINFORCEMENT AND PROTECTIVE WITH COOL FLEET
	NEED SLOPE OF 1/800 TO BE PROVIDED
JOBHORY FLOORING	WOODEN FINISH / R.C.C./STEEL/PPC
	CHOOSE THE FLOORING FOR ALL ROOMS
	WITHINCE CEMENT TILE FLOORING
	FOR BATH A NO HIGH RATED TILE TO THE HEIGHT OF 1.5M
	GRANITE TILE
KITCHEN	
NORTH SLAB	CLAY/SHIM ON
SNOW	1/4" SLAB / CLAY/SHIM
CHIMNEY	1/4" SLAB WITH ONE COAT OF PRIMER
	CLUTCH-PLASTIC (DRAINAGE) WITH
	WITH ONE COAT OF PRIMER
	1/4" SLAB WITH R.C.C. COVER SLAB
O.H.T	

AREA STATEMENT	
	SQ.M
GROUND FLOOR AREA	121.14
FIRST FLOOR AREA	121.14
SECOND FLOOR AREA	121.14
TOTAL AREA	<u>363.42</u>
AREA PER UNIT 60.57 SQ.M (652 SFT)	
(INCLUDING THE STAIRCASE)	

1. [] INDICATES THE LEFT POSITION AT UNTIL LEVEL.
2. STAIRCASE - 1700-300 MM. HEIGHT-150 MM.
3. PLASTER HEIGHT 800 MM FROM FLOOR.
4. (DIMENSIONS ON THIS CONNECTION)
5. SLAB LEVEL 750 MM FROM FLOOR
6. ALUMINUM WINDOW 3000 MM FROM FLOOR LEVEL
7. ROOF HEIGHT 1800 MM (HEIGHT SLAB THICK)
8. HEIGHT OF PLASTER WALL BY PLASTER.
9. TERRACE, ETC. 1200 MM
10. SLURRY SLAB FOR 100 X 400 MM
11. ALUMINUM WINDOWS FOR COASTAL AREA.
12. SLAB SLAB SURROUND WITH ANTICORROSION TREATMENT IN FLOOR.
13. WIDTH OF GARDEN IS 450 MM
14. WIDTH OF KITCHEN SLAB 400 MM SLAB COOL
15. OF WARD AREA / LIGHT 400 MM
16. SLAB SLAB 100 X 100 MM SHOULD BE ROOMS FROM

PROPOSED PCHC QTRS (5 IN 1 - G+2)
S.NO. 1
VILLAGE 1
TOWN/TALUK 1
DISTRICT 1

SCALE: 1:50		DRAWING NO. DD/YEAR/15	
DATE:			
Sd/- 04.06.15	Sd/- 04.06.15	Sd/- 04.06.15	Sd/- 04.06.15
Architect	Asst. Architect	HDG (DOT)	Em. Engr (P)
 04.06.2015 Asst. Engineer		04.06.2015 Chief Engineer	
TAMILNADU POLICE HOUSING CORPORATION LTD. NO.32, EVS SAJI, RAIPAKKAM, CHENNAI-600 010			



**SUPERINTENDING ENGINEER
SOUTH CIRCLE
TAMILNADU POLICE HOUSING CORPORATION LTD.,
MADURAI-14.**

CONTRACTOR

No. OF CORRECTIONS