

TENDER CODING SHEET (RATE EXCLUSIVE OF GST TO BE FILLED UP BY THE TENDERER IN THIS CODING SHEET)					
NAME OF WORK : RENOVATION OF EXISTING WORKING WOMEN'S HOSTEL BUILDING AT VEERAMANIKKAPURAM PALAYAMKOTTAI IN TIRUNELVELI CITY UNDER SOCIAL WELFARE DEPARTMENT (RE-TENDER)					
<i>Item. No.</i>	<i>Description</i>	<i>Qty</i>	<i>Unit</i>	<i>Rate exclusive of GST in figures and in words</i>	<i>Amount</i>
1.1	Earth work excavation for foundation in all soils (including refilling) a. 0 to 2 mt.	26.80	1 Cum		
13.1	Filling with excavated earth	11.08	1 Cum		
39	Supplying and fixing of MS Grills in position	57.80	1 Kg		
40	Painting 2 coats - New "wood work"	78.60	1 Sqm		

<i>Item. No.</i>	<i>Description</i>	<i>Qty</i>	<i>Unit</i>	<i>Rate exclusive of GST in figures and in words</i>	<i>Amount</i>
41	Painting 2 coats - New "iron work"	11.40	1 Sqm		
52	Supplying and laying of PVC Water supply (ASTM) pipe a. 32 mm dia	35.00	1 Rmt		
	b. 25 mm dia	185.00	1 Rmt		
	c. 20 mm dia	57.00	1 Rmt		
69	<b>Electrical arrangements</b> Supplying and fixing of 15 Amp 3 pin plug socket	32	Each		

<i>Item. No.</i>	<i>Description</i>	<i>Qty</i>	<i>Unit</i>	<i>Rate exclusive of GST in figures and in words</i>	<i>Amount</i>
<b>74</b>	Charges for assembling and fixing of ceiling "Fan"	<b>3</b>	<b>Each</b>		
<b>2.1.1</b>	<b>Annexure</b> Supplying and filling the foundation and basement with gravel	<b>12.30</b>	<b>1 Cum</b>		
<b>2.1.3</b>	Supplying and filling the Foundation and Basement with Crushed stone sand	<b>2.10</b>	<b>1 Cum</b>		
<b>2.1.6</b>	Supplying of Stone dust	<b>4.30</b>	<b>1 Cum</b>		
<b>3.1.1</b>	C.C.1:5:10 using 40mm size HBSJ for Foundation & Basement using crushed stone sand	<b>5.80</b>	<b>1 Cum</b>		

<i>Item. No.</i>	<i>Description</i>	<i>Qty</i>	<i>Unit</i>	<i>Rate exclusive of GST in figures and in words</i>	<i>Amount</i>
<b>3.2.1</b>	P.C.C. 1:2:4 using 20mm size HBSJ for Foundation & Basement and other similar works using crushed stone sand	<b>1.40</b>	<b>1 Cum</b>		
<b>6.6.1</b>	Brick work in C.M. 1:5 (F& B) using Kiln Burnt Country bricks of size 22 x 11 x 7 cm (8 ¾ " x 4 ¼ " x 2 ¾ ") using crushed stone sand	<b>26.70</b>	<b>1 Cum</b>		
<b>9.6.1</b>	Brick work in C.M. 1:6 using Kiln Burnt Country bricks of size 22x11x7cm (8 ¾ " x 4 ¼ " x 2 ¾ ") using crushed stone sand a. In Ground Floor	<b>0.50</b>	<b>1 Cum</b>		
<b>10.6.1</b>	Brick partition work in C.M. 1:4 using Kiln Burnt Country bricks of size 22x11x7 cm (8 ¾"x4 ¼"x2 ¾") 110 mm tk (B.P.) using crushed stone sand b. In Ground Floor	<b>9.00</b>	<b>1 Sqm</b>		

<i>Item. No.</i>	<i>Description</i>	<i>Qty</i>	<i>Unit</i>	<i>Rate exclusive of GST in figures and in words</i>	<i>Amount</i>
<b>16.1.1</b>	Precast Jally ventilator 50mm thick using standardised concrete mix M20 Grade using crushed stone sand a. In Ground Floor	<b>0.50</b>	<b>1 Sqm</b>		
<b>18.1</b>	Formwork using M.S.Sheet c. For Square and rectangular columns and small quantities	<b>1.00</b>	<b>1 Sqm</b>		
<b>21.5.2</b>	Supplying and fixing of soild UPVC door shutter with frame	<b>4.80</b>	<b>1 Sqm</b>		
<b>22.3.3</b>	Cup board/ward robes double leaf shutters using 9mm thick phenol bonded BWR grade plywood, TW frames, styles & rails including two coat enamel paint over one coat primer with brass screws	<b>78.60</b>	<b>1 Sqm</b>		

<i>Item. No.</i>	<i>Description</i>	<i>Qty</i>	<i>Unit</i>	<i>Rate exclusive of GST in figures and in words</i>	<i>Amount</i>
<b>23.2.1</b>	Supplying and fixing of 4mm thick pin headed glass panels with Aluminium beedings	<b>3.50</b>	<b>1 Sqm</b>		
<b>26.1</b>	Flooring in C.C.1:5:10 using 40mm size HBSJ using crushed stone sand	<b>2.10</b>	<b>1 Cum</b>		
<b>28.1</b>	Floor plastering in C.M. 1:4, 20mm thick. using crushed stone sand	<b>10.60</b>	<b>1 Sqm</b>		
<b>29.8.1</b>	Supplying and fixing of Glazed tiles using Grout (Tile Joint Filler) using crushed stone sand	<b>38.70</b>	<b>1 Sqm</b>		

<i>Item. No.</i>	<i>Description</i>	<i>Qty</i>	<i>Unit</i>	<i>Rate exclusive of GST in figures and in words</i>	<i>Amount</i>
29.9.1	Supplying and laying of Floor ceramic tiles (Anti-skid) using Grout (Tile Joint Filler). using crushed stone sand	30.40	1 Sqm		
29.9.2	Repointing of Ceramic floor tiles (Anti-skid) using Grout	30.40	1 Sqm		
32.1.1	Hydraulic Pressed tiles (23 cm x 23 cm x 2 cm thick) mixed with water proofing compound @ 2% by weight of cement using crushed stone sand	35.90	1 Sqm		
33.1	Plastering in C.M. 1:5, 12 mm tk. using crushed stone sand	227.80	1 Sqm		

<i>Item. No.</i>	<i>Description</i>	<i>Qty</i>	<i>Unit</i>	<i>Rate exclusive of GST in figures and in words</i>	<i>Amount</i>
<b>34.1</b>	Plastering in C.M. 1:4, 12 mm tk. using crushed stone sand	<b>45.00</b>	<b>1 Sqm</b>		
<b>35.1.1</b>	Plastering in CM 1:3, 12 mm tk. with WPC using crushed stone sand	<b>74.40</b>	<b>1 Sqm</b>		
<b>38.4.3</b>	Painting the old walls with two coats of Oil Bound Distemper over existing wall surfaces including thorough scrapping	<b>943.00</b>	<b>1 Sqm</b>		
<b>38.6</b>	Primer coat using one coat of white cement over the cement plastered/ concrete new wall surfaces or other similar works	<b>11.20</b>	<b>1 Sqm</b>		



<i>Item. No.</i>	<i>Description</i>	<i>Qty</i>	<i>Unit</i>	<i>Rate exclusive of GST in figures and in words</i>	<i>Amount</i>
<b>40.1</b>	Two coats of painting over the old wood work including thorough scrapping	<b>48.30</b>	<b>1 Sqm</b>		
<b>41.1</b>	Two coats of painting over the old iron work including thorough scrapping	<b>78.60</b>	<b>1 Sqm</b>		
<b>47.1</b>	Supplying and fixing of Brass chromium Plated Towel Rail 60cm long and 20mm dia with Brackets	<b>3</b>	<b>Set</b>		
<b>54.1.1</b>	Supplying and fixing of 15mm dia Half turn Brass core C.P. Tap (long body)	<b>12</b>	<b>Each</b>		

<i>Item. No.</i>	<i>Description</i>	<i>Qty</i>	<i>Unit</i>	<i>Rate exclusive of GST in figures and in words</i>	<i>Amount</i>
54.2.1	Supplying and fixing of 15mm dia Half turn Brass core C.P. Tap (Short body)	23	Each		
54.2.3	Supplying and fixing of Chromium plated Angle valve	5	Each		
54.2.4	Supplying and fixing of Brass Chromium plated Pillar Tap (Heavy type) 15mm dia	22	Each		
56.3.2	Supplying and fixing of Indian Water closet white glazed (Oriya type) of size 580 x 440mm with PVC SWR Grade 'P' or 'S' trap - in G.F. using crushed stone sand	2	Each		

<i>Item. No.</i>	<i>Description</i>	<i>Qty</i>	<i>Unit</i>	<i>Rate exclusive of GST in figures and in words</i>	<i>Amount</i>
<b>56.4.2</b>	Supplying and fixing of Indian Water closet white glazed (Oriya type) of size 580 x 440mm with PVC SWR Grade 'P' or 'S' trap - Other than G.F. using crushed stone sand	<b>4</b>	<b>Each</b>		
<b>58.3</b>	Supplying and fixing of PVC SWR pipe (Soil line) with ISI mark - type 'B'. a. 110 mm dia.	<b>54.00</b>	<b>1 Rmt</b>		
	b. 75 mm dia	<b>40.00</b>	<b>1 Rmt</b>		
<b>60.1</b>	Supplying and fixing of PVC Nahani trap (4way/2way) using crushed stone sand	<b>2</b>	<b>Each</b>		

<i>Item. No.</i>	<i>Description</i>	<i>Qty</i>	<i>Unit</i>	<i>Rate exclusive of GST in figures and in words</i>	<i>Amount</i>
<b>61.1.1</b>	Supplying and fixing of UPVC Non Pressure Pipe of SN8 SDR 34 (S 16.5) as per IS 15328/2003 a) 110mm dia UPVC Non Pressure pipe	<b>15.00</b>	<b>1 Rmt</b>		
	b) 160mm dia UPVC Non Pressure pipe	<b>15.00</b>	<b>1 Rmt</b>		
<b>64.1</b>	Wiring with 1.5 sqmm PVC insulated single core multi strand fire retardant flexible copper cable with ISI mark confirming IS: 694:1990. b. Light point without ceiling rose	<b>2</b>	<b>Each Point</b>		
<b>68.2.2</b>	Wiring with 1.5 sqmm PVC insulated single core multi strand fire retardant flexible copper cable with ISI mark confirming IS: 694:1990 for 5 amps 5 pin plug socket point at Convenient Places.(Open wiring)	<b>14</b>	<b>Each Point</b>		
<b>75.1.2</b>	Supplying and delivery of fan with electronic dimmer with ISI mark a) 48" (1200mm) sweep	<b>3</b>	<b>Each</b>		

<i>Item. No.</i>	<i>Description</i>	<i>Qty</i>	<i>Unit</i>	<i>Rate exclusive of GST in figures and in words</i>	<i>Amount</i>
75.1.3	Supplying and fixing of Stepped Electronic 300W/450W Square Type Fan Regulator	22	Each		
75.1.4	Supplying and fixing of Wall mounting Fan 300mm sweep	14	Each		
77.5.1	Run off 2 Wires of 1.5 sqmm PVC insulated single core multi strand fire retardant flexible copper cable with ISI mark confirming IS: 694:1990 (Open Wiring)	180.00	1 Rmt		
77.7.1	Run off 2 Wires of 2.5 sqmm PVC insulated single core multi strand fire retardant flexible copper cable with ISI mark confirming IS: 694:1990 (Open Wiring)	225.00	1 Rmt		
100	Supplying and fixing of 9 watts LED Bulb	38	Each		

<i>Item. No.</i>	<i>Description</i>	<i>Qty</i>	<i>Unit</i>	<i>Rate exclusive of GST in figures and in words</i>	<i>Amount</i>
<b>101</b>	Supplying and fixing of 25 watts LED bulb with street light fittings	<b>4</b>	<b>Each</b>		
<b>102</b>	Supplying and fixing of 4'18 watts crystal LED tube light fittings	<b>11</b>	<b>Each</b>		
<b>124</b>	Supplying and delivery of following dia GI pipes 'B' class in position a) 50mm dia GI pipe	<b>28.40</b>	<b>1 Rmt</b>		
	b) 40mm dia GI pipe	<b>29.20</b>	<b>1 Rmt</b>		
<b>125</b>	Fabrication and fixing in position of Truss members and Purlins by using 50mm dia GI pipe	<b>280.90</b>	<b>1 Kg</b>		

<i>Item. No.</i>	<i>Description</i>	<i>Qty</i>	<i>Unit</i>	<i>Rate exclusive of GST in figures and in words</i>	<i>Amount</i>
<b>140</b>	Supplying of 3 to 10mm size HBS jelly etc.,	<b>4.30</b>	<b>1 Cum</b>		
<b>141</b>	Conveyance charges of 63mm tk Paver block including loading and unloading	<b>57.00</b>	<b>1 Sqm</b>		
<b>143</b>	Labour charges for spreading and levelling of 3mm to 10mm size HBSJ and stone dust to the required thickness with compaction by earth rammer and laying Paver block	<b>57.00</b>	<b>1 Sqm</b>		
<b>165</b>	Supplying and fixing in position of colour Galvanium sheet roof 0.47mm thick	<b>15.70</b>	<b>1 Sqm</b>		

<i>Item. No.</i>	<i>Description</i>	<i>Qty</i>	<i>Unit</i>	<i>Rate exclusive of GST in figures and in words</i>	<i>Amount</i>
167	Supplying and fixing of 200mm dia 6mm tk circular MS flange	8	Each		
168	Supplying and fixing of necessary required MS bolts & nuts	0.90	1 Kg		
344.3	Supplying and fixing of PVC / Fibre Glass Framed 5.5mm thick Mirror of size 600mm x 450mm, Shelf type with Hard Board Backing	22	Each		
361.1	Supplying and laying of Concrete designer tiles flooring in C.M. 1:3 (one of cement and three of crushed stone sand) 20mm thick	4.50	1 Sqm		



<i>Item. No.</i>	<i>Description</i>	<i>Qty</i>	<i>Unit</i>	<i>Rate exclusive of GST in figures and in words</i>	<i>Amount</i>
<b>361.2</b>	Repainting of Concrete designer tiles flooring by using white / colour cement	<b>21.00</b>	<b>1 Sqm</b>		
<b>367</b>	Providing wooden melamen polish for main door new wood work	<b>9.00</b>	<b>1 Sqm</b>		
<b>378.2</b>	Supplying and fixing of Stain free Nano polish Vetrified tiles in CM 1:3, 20mm tk using crushed stone sand	<b>5.40</b>	<b>1 Sqm</b>		
<b>379.5.1</b>	Supplying and laying of Granite tiles flooring (Super fine polished with machine cut edges) of size 2'x1', 10mm tk (Jet Black) over cement plastering in CM 1:3 20mm thick using crushed stone sand	<b>2.20</b>	<b>1 Sqm</b>		

<i>Item. No.</i>	<i>Description</i>	<i>Qty</i>	<i>Unit</i>	<i>Rate exclusive of GST in figures and in words</i>	<i>Amount</i>
<b>534</b>	Supplying and erecting in position of water purifier 500 litres capacity Industrial Model Reverse Osmosis water-cum-Purifier	<b>1</b>	<b>Set</b>		
<b>544</b>	Supplying and fixing of smoke control automatic Sanitary napkin disposal machine (disposal capacity 25 Nos/day)	<b>1</b>	<b>Each</b>		
<b>568</b>	<b><u>5 KVA Inverter</u></b> <b><u>UPS Inverter Panel</u></b> Supplying and installation of UPS Inverter panel 5 KVA static UPS without Battery 48V static UPS to support Computer load & Non Computer load. Cost does not include batteries and battery stand requires 4 batteries only	<b>1</b>	<b>Each</b>		
<b>568.1</b>	Supplying and installation of Battery pack non SMF - 100 AH inverter type battery cost of SF stand master 100 AH flat inverter batteries capable of deep discharging for longer back up time	<b>6</b>	<b>Each</b>		

<i>Item. No.</i>	<i>Description</i>	<i>Qty</i>	<i>Unit</i>	<i>Rate exclusive of GST in figures and in words</i>	<i>Amount</i>
568.2	Supplying and fixing of Battery stand for 100 AH cost of a standard battery stand for housing 100 AH SMF batteries, the cost is including battery terminal and inter linking cables	1	Each		
584	Supply and fixing of water CO <sub>2</sub> stored pressure type 9 litres capacity Fire extinguisher as per New IS 15683 complete	1	Each		
585	Supply and fixing of stored pressure ABC (Mono Ammonium Phospate) powder type Fire Extinguisher of 6 Kg capacity as per IS:15683	6	Each		
597	<b><u>CCTV WORKS</u></b> Supply and installation of 2 Mega Pix Bullet Network camera 3.6mm fixed Lens (2.80mm optional) smart IR upto 30m IR Distance (outdoor camera)	5	Each		

<i>Item. No.</i>	<i>Description</i>	<i>Qty</i>	<i>Unit</i>	<i>Rate exclusive of GST in figures and in words</i>	<i>Amount</i>
<b>598</b>	Supply and installtion of Network Video Recorder for CCTV 16 channel - 2 SATA (2 Nos. Hard disk)	<b>1</b>	<b>Each</b>		
<b>599</b>	Supply and installation of Network Switch manageable L2 PoE switch, 24 Port, 10/100/1000, 2 SFP Ports with support for auto VLANs and support features like IP4/IP6, QoS, advanced security management, POE management along with 4U Rack should support 802.3 AF (802.3 at Type 1)	<b>1</b>	<b>Each</b>		
<b>600</b>	Supply and installation of 2 TB Hard Disk for the above NVR for extended recoding	<b>1</b>	<b>Each</b>		
<b>601</b>	Supply and installation of surface mounted 4 U metal Rack with Lock & Key arrangements	<b>1</b>	<b>Each</b>		

<i>Item. No.</i>	<i>Description</i>	<i>Qty</i>	<i>Unit</i>	<i>Rate exclusive of GST in figures and in words</i>	<i>Amount</i>
<b>602</b>	Supply and laying of HDMI cable 5 meters	<b>1</b>	<b>Each</b>		
<b>603</b>	Supply and fixing of Weather proof Camera Junction Box of size 4"x4" for out door cameras	<b>5</b>	<b>Each</b>		
<b>604</b>	Supply and installation of Unarmoured LAN & CCTV cable CAT 6	<b>350.00</b>	<b>1 Rmt</b>		
<b>605</b>	Supply and fixing of conduit pipe 25mm(1") (16 gauge)	<b>200.00</b>	<b>1 Rmt</b>		

<i>Item. No.</i>	<i>Description</i>	<i>Qty</i>	<i>Unit</i>	<i>Rate exclusive of GST in figures and in words</i>	<i>Amount</i>
<b>606</b>	Installation Testing and Commissioning of whole CCTV system with proper handing over & with proper documentation	<b>1</b>	<b>Job</b>		
<b>609</b>	Supplying, delivery and installation of 32" LED HD Ready Smart LED TV with multiple use commercial LED TV including cost of stabilizer	<b>2</b>	<b>Each</b>		
<b>614</b>	Providing and fixing the fly proof Velcro Mosquito Net	<b>92.20</b>	<b>1 Sqm</b>		
<b>615</b>	Supplying and fixing of Polyester cotton (Polyester 65% & Cotton 35%) Jaquar cloth with 260 GSM curtain cloth 48" width french 3 Folded fleet type stitching of approved colour	<b>75.40</b>	<b>1 Sqm</b>		

<i>Item. No.</i>	<i>Description</i>	<i>Qty</i>	<i>Unit</i>	<i>Rate exclusive of GST in figures and in words</i>	<i>Amount</i>
<b>624</b>	Supplying and fixing of Polycarbonate sheet 6mm thick in position with necessary fittings	<b>10.40</b>	<b>1 Sqm</b>		
<b>625</b>	Supplying and delivery of Mattress of size 75"x36"x4" with primary material of Foam and coir and quilt, type-sandwich, Bed size-Single	<b>61</b>	<b>Each</b>		
<b>626</b>	Providing and fixing for the paint coated mild steel double decker bunk bed of size (0.91mx1.98m) using MS tube size 40x40 square tube, 25x25 square tube, 18 gauge MS sheet with side ladder and bed of 16 Gauge CR sheet	<b>14</b>	<b>Each</b>		
<b>627</b>	Supplying and fixing of wall mounted foldable study table of size (0.60mx0.40m) using 19mm thick of MDF board / Prelaminated BSL water proof plywood	<b>46</b>	<b>Each</b>		

<i>Item. No.</i>	<i>Description</i>	<i>Qty</i>	<i>Unit</i>	<i>Rate exclusive of GST in figures and in words</i>	<i>Amount</i>
<b>628</b>	Supplying and delivery of Steel table of size 4'x2'x2'-6" using top 19mm thick of MDF board / Prelaminated BSL water proof plywood legs made up of 1"x1" square tube and top alround frame made up of 1"x1" square tube, two drawers using 18 gauge MS sheet with lock & key arrangements	<b>1</b>	<b>Each</b>		
<b>629</b>	Supplying and delivery of Plastic Chair with arm	<b>47</b>	<b>Each</b>		
<b>630</b>	Supply and fixing of 4'x3' Aluminium frame Notice Board	<b>1</b>	<b>Each</b>		
<b>631</b>	Supply and fixing of 3 seater Sofa set (Teak wood) with cushion	<b>1</b>	<b>Each</b>		



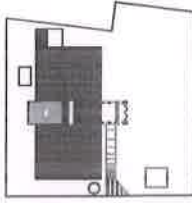
<i>Item. No.</i>	<i>Description</i>	<i>Qty</i>	<i>Unit</i>	<i>Rate exclusive of GST in figures and in words</i>	<i>Amount</i>
<b>632</b>	Supplying and delivery of Iron Table stand with press Holder, Foldable & Height Adjustable / Ironing Board with Multi function Ironing table / Ironing Board covers with foam pad	<b>10</b>	<b>Each</b>		
<b>633</b>	Supplying and delivery of Pillow (16"x24") filled with Recron	<b>61</b>	<b>Each</b>		
<b>634</b>	Supplying and delivery of Pillow cover (16"x24") using cotton fabric	<b>122</b>	<b>Each</b>		
<b>635</b>	Supplying and delivery of Bed sheet cover suitable size of single cot Mattresses	<b>122</b>	<b>Each</b>		
<b>636</b>	Supplying and fixing of 25mm dia 1mm thick, Stainless steel 304 Grade hollow tubes for the fixing of window curtains with ornamental brackets on either side	<b>53.90</b>	<b>1 Rmt</b>		

<i>Item. No.</i>	<i>Description</i>	<i>Qty</i>	<i>Unit</i>	<i>Rate exclusive of GST in figures and in words</i>	<i>Amount</i>
637	Construction of Percolation well / Rain water harvesting pit of 1.20m dia upto 2.50m depth with Brick masonry in C.M. 1:5	2	Each		
638	Supplying and fixing of Automatic Electrical water heater 5 star 15 lit capacity storage	22	Each		
639	Supplying and fixing of Drinking water fountain with cooler (stainless steel) capacity:80 litres	3	Each		
640	Providing, fixing pipe supports from columns / wall or suspenders from roof slab to suit various dia of pipes made out of GI / MS adjustable rods threaded for a sufficient length	50	Each		
641	<b><u>Computer, WIFI, LED TV, Printer, TV Dish</u></b> Supplying and fixing of 4 GB DD R4 RAM, 1 TB HDDI Intel core ie 4 GB, 1 TB, DOS Desktop (with Monitor) 19.5" HD screen, Keyboard and Mouse	1	Each		

<i>Item. No.</i>	<i>Description</i>	<i>Qty</i>	<i>Unit</i>	<i>Rate exclusive of GST in figures and in words</i>	<i>Amount</i>
<b>642</b>	Supplying and fixing of Indoor 802.11 AC wave 2 2x2:2 wifi access point with all mounting kit and PoE (Power over Ethernet) injector	<b>7</b>	<b>Each</b>		
<b>643</b>	Supplying and fixing of unarmoured LAN & CCTV cable CAT6	<b>350.00</b>	<b>1 Rmt</b>		
<b>644</b>	Supplying and fixing of 2 U wall mount rack & accessories	<b>1</b>	<b>Each</b>		
<b>645</b>	Supplying and fixing of 8 PORT POE LAN switch 10/100/1000 Mbps with necessary connection	<b>2</b>	<b>Each</b>		
<b>647</b>	Supplying and delivery of A4 All in one Printer (Scan/Copy/Xerox) Laserjet print copy scan, wifi printer, compact design, Reliable and fast printing	<b>1</b>	<b>Each</b>		

<i>Item. No.</i>	<i>Description</i>	<i>Qty</i>	<i>Unit</i>	<i>Rate exclusive of GST in figures and in words</i>	<i>Amount</i>
<b>648</b>	Supply, delivery and installation and fixing TV Dish HD Box with remote control	<b>1</b>	<b>Each</b>		
<b>649</b>	Supplying and fixing of Biometric with SSR Report (Self service Recorder)	<b>1</b>	<b>Each</b>		
<b>650</b>	Supplying and delivery of GC181 pack of 2, Dry Iron Box (Black) 1000 W	<b>10</b>	<b>Each</b>		
<b>796</b>	Two coat of Plastic emulsion paint including primer for outer wall surfaces	<b>98.40</b>	<b>1 Sqm</b>		

<i>Item. No.</i>	<i>Description</i>	<i>Qty</i>	<i>Unit</i>	<i>Rate exclusive of GST in figures and in words</i>	<i>Amount</i>
796.1	Painting the old walls with two coats of Plastic emulsion paint without primer and including thorough scrapping	1656.90	1 Sqm		
800.3	Clean removal of cement plaster from the existing wall surfaces	47.80	1 Sqm		
800.5	Clean removal of Floor finish and dadoing walls in cement mortar with Mosaic tiles / Glazed Tiles / Cuddapah slabs	74.50	1 Sqm		
800.6	Dismantling, Clearing away and carefully stacking materials useful for re-use for any thickness of walls One course of Pressed Tile Roof finish in Cement mortar	35.88	1 Sqm		
	<b>TOTAL</b>				
(Rupees					
)					



**KEY PLAN**

**SCHEDULE OF JOINTS**

Joint No.	Description	Joint Type	Joint Length
1	ALUMINIUM FRAMED DOOR WITH GLASS	DOOR	1000
2	ALUMINIUM FRAMED WINDOW WITH GLASS	WINDOW	1000
3	STEEL FRAMED DOOR WITH GLASS	DOOR	1000
4	STEEL FRAMED WINDOW WITH GLASS	WINDOW	1000
5	STEEL FRAMED DOOR WITH GLASS	DOOR	1000
6	STEEL FRAMED WINDOW WITH GLASS	WINDOW	1000
7	STEEL FRAMED DOOR WITH GLASS	DOOR	1000
8	STEEL FRAMED WINDOW WITH GLASS	WINDOW	1000
9	STEEL FRAMED DOOR WITH GLASS	DOOR	1000
10	STEEL FRAMED WINDOW WITH GLASS	WINDOW	1000

**LEGENDS**

- 100mm Thick Wall
- 150mm Thick Wall
- 100mm Thick Slab
- 100mm Thick Beam
- 100mm Thick Column
- 100mm Thick Foundation

**NOTE**

ALL DIMENSIONS ARE IN MILLIMETERS  
DO NOT SCALE THE DRAWING  
IN THE EVENT OF ANY DISCREPANCY OR DIFFERENCE BETWEEN  
ARCHITECT DRAWINGS, STRUCTURAL DRAWINGS AND SITE CONDITIONS  
ARCHITECT DRAWINGS SHALL PREVAIL.

**PROJECT**

TNIFVC - TAMILNADU INFRASTRUCTURE FUND  
MANAGEMENT CORPORATION

**PROJECT**

WORKING WOMEN'S HOSTEL - TRINELVELI

**DRAWING STAGE**

TENDER DRAWING

**DESIGNED BY**

SHREE KUMAR

**CHECKED BY**

SHREE KUMAR

**SCALE**

1:100

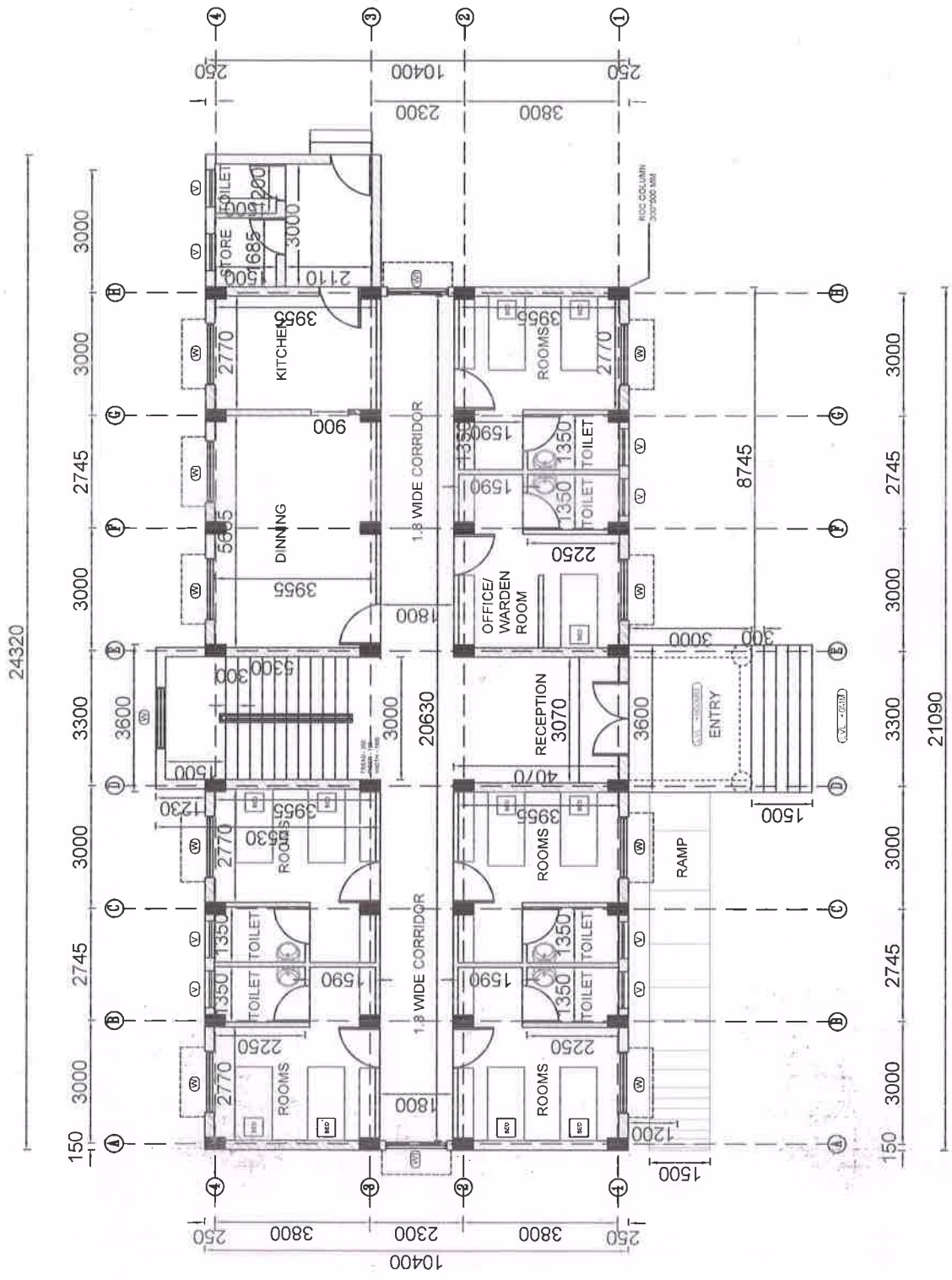
**DATE**

20.12.2020

**GROUND FLOOR PLAN**

**GROUND FLOOR PLAN**

GROUND FLOOR PLAN - 230.80 SQM  
FIRST FLOOR PLAN - 223.50 SQM  
SECOND FLOOR PLAN - 223.50 SQM  
TOTAL AREA - 677.80 SQM



**GROUND FLOOR PLAN**

GROUND FLOOR PLAN - 230.80 SQM  
FIRST FLOOR PLAN - 223.50 SQM  
SECOND FLOOR PLAN - 223.50 SQM  
TOTAL AREA - 677.80 SQM

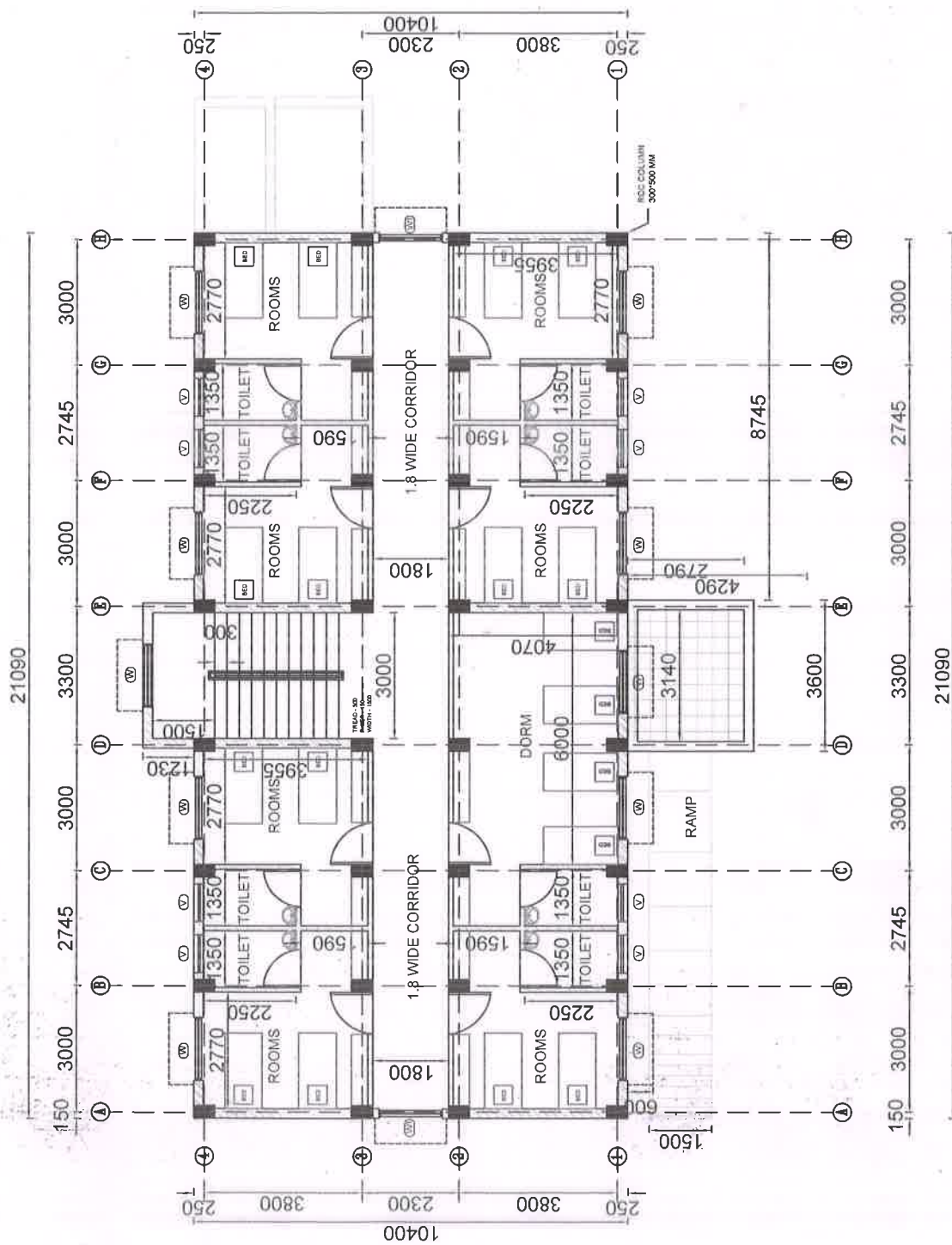
**GROUND FLOOR PLAN**

GROUND FLOOR PLAN

**CONTRACTOR**

**SUPERINTENDING ENGINEER,**  
**SOUTH CIRCLE,**  
**TAMILNADU POLICE HOUSING CORPORATION LTD.**  
**MADRURAI-14.**

**NOS. OF CORRECTIONS**



GROUND FLOOR PLAN - 230.80 SQM  
FIRST FLOOR PLAN - 223.50 SQM  
SECOND FLOOR PLAN - 223.50 SQM  
TOTAL AREA - 677.80 SQM

## TYPICAL FLOOR PLAN

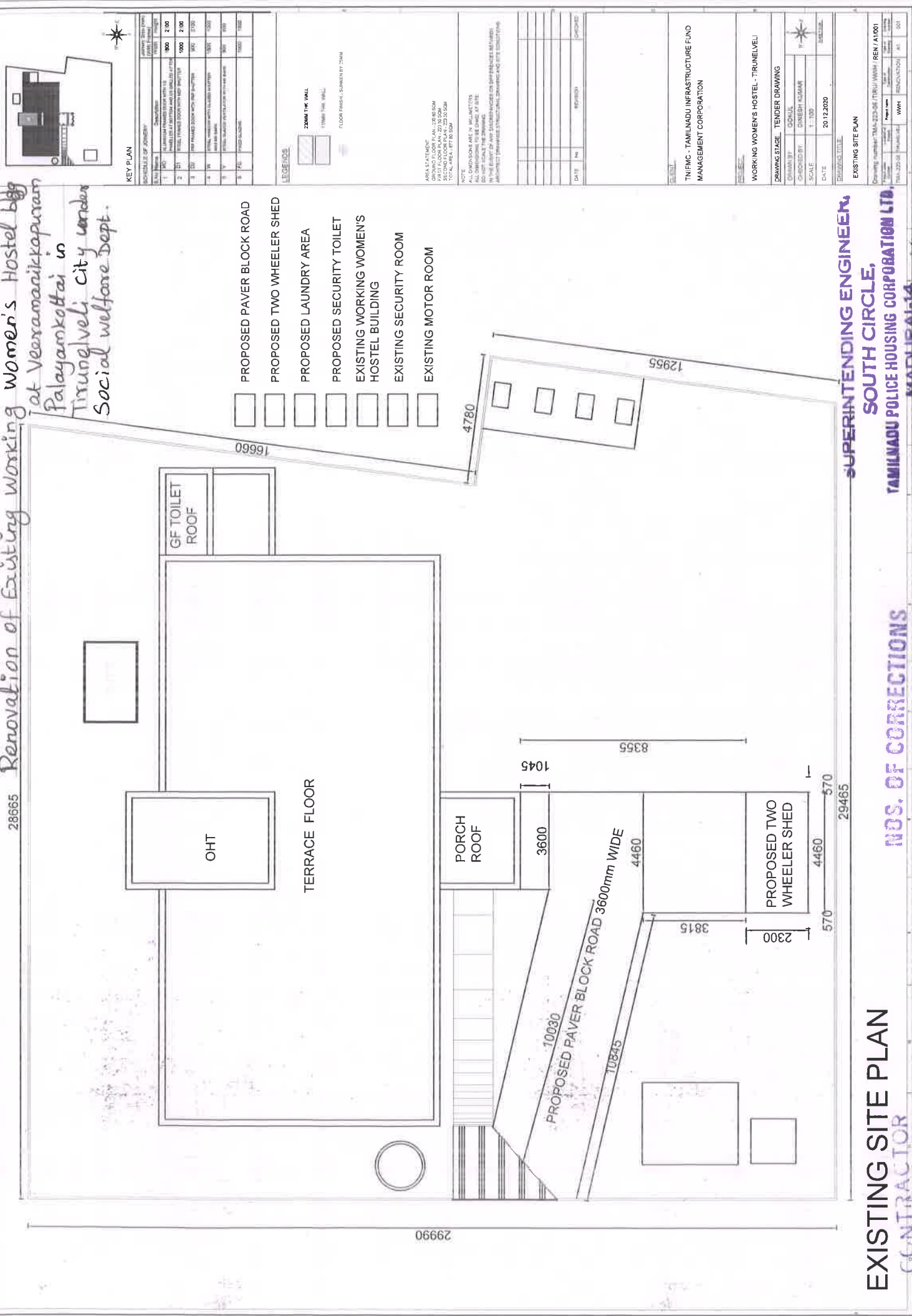
# CONTRACTOR

**NOS. OF CORRECTIONS**

**SUPERINTENDING ENGINEER,  
SOUTH CIRCLE,  
TAMILNADU POLICE HOUSING CORPORATION LTD  
MADURAI-14.**



g women's Hostel bbg  
at Veeramani kapuram  
Palayamkottai in  
Tirunelveli city under  
Social welfare Dept.

[illegible]

PROPOSED TWO WHEELER SHED

PROPOSED LAUNDRY AREA

PROPOSED SECURITY TOILET

EXISTING WORKING WOMEN'S HOSTEL BUILDING

EXISTING SECURITY ROOM

EXISTING MOTOR ROOM

2990


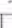
AREA STATEMENT  
GROUND FLOOR PLAN - 270.80 SQM  
FIRST FLOOR PLAN - 223.50 SQM  
SECOND FLOOR PLAN - 223.50 SQM  
TOTAL AREA - 877.80 SQM

NOTE  
ALL DIMENSIONS ARE IN MILLIMETERS  
ALL DIMENSIONS TO BE GIVEN AT THE  
DO NOT SCALE THE DRAWING.  
IN THE EVENT OF ANY DISCREPANCIES OR DISAGREEMENTS BETWEEN  
DRAWINGS OR DRAWING AND SPECIFICATION, THE SPECIFICATION SHALL PREVAIL.

[illegible]

TNIFMC - TAMILNADU INFRASTRUCTURE FUND  
MANAGEMENT CORPORATION

WORKING WOMEN'S HOSTEL - TIRUNELVELI

DRAWING STAGE		TENDER DRAWING	
DRAWN BY	GOVIL		
CHECKED BY	DINESH KUMAR		
SCALE	1 : 100		
DATE	20.12.2020		

EXISTING SITE PLAN

Project name	Type of construction	Location	Project number	Project name	Type of construction	Location
PA-223-06	Reinforced	REINFORCED	001	PA-223-06	Reinforced	REINFORCED

## EXISTING SITE PLAN

	NOS.	OF	CORRECTIONS
1900	1	1	1
1901	1	1	1
1902	1	1	1
1903	1	1	1
1904	1	1	1
1905	1	1	1
1906	1	1	1
1907	1	1	1
1908	1	1	1
1909	1	1	1
1910	1	1	1
1911	1	1	1
1912	1	1	1
1913	1	1	1
1914	1	1	1
1915	1	1	1
1916	1	1	1
1917	1	1	1
1918	1	1	1
1919	1	1	1
1920	1	1	1
1921	1	1	1
1922	1	1	1
1923	1	1	1
1924	1	1	1
1925	1	1	1
1926	1	1	1
1927	1	1	1
1928	1	1	1
1929	1	1	1
1930	1	1	1
1931	1	1	1
1932	1	1	1
1933	1	1	1
1934	1	1	1
1935	1	1	1
1936	1	1	1
1937	1	1	1
1938	1	1	1
1939	1	1	1
1940	1	1	1
1941	1	1	1
1942	1	1	1
1943	1	1	1
1944	1	1	1
1945	1	1	1
1946	1	1	1
1947	1	1	1
1948	1	1	1
1949	1	1	1
1950	1	1	1
1951	1	1	1
1952	1	1	1
1953	1	1	1
1954	1	1	1
1955	1	1	1
1956	1	1	1
1957	1	1	1
1958	1	1	1
1959	1	1	1
1960	1	1	1
1961	1	1	1
1962	1	1	1
1963	1	1	1
1964	1	1	1
1965	1	1	1
1966	1	1	1
1967	1	1	1
1968	1	1	1
1969	1	1	1
1970	1	1	1
1971	1	1	1
1972	1	1	1
1973	1	1	1
1974	1	1	1
1975	1	1	1
1976	1	1	1
1977	1	1	1
1978	1	1	1
1979	1	1	1
1980	1	1	1
1981	1	1	1
1982	1	1	1
1983	1	1	1
1984	1	1	1
1985	1	1	1
1986	1	1	1
1987	1	1	1
1988	1	1	1
1989	1	1	1
1990	1	1	1
1991	1	1	1
1992	1	1	1
1993	1	1	1
1994	1	1	1
1995	1	1	1
1996	1	1	1
1997	1	1	1
1998	1	1	1
1999	1	1	1
2000	1	1	1
2001	1	1	1
2002	1	1	1
2003	1	1	1
2004	1	1	1
2005	1	1	1
2006	1	1	1
2007	1	1	1
2008	1	1	1
2009	1	1	1
2010	1	1	1
2011	1	1	1
2012	1	1	1
2013	1	1	1
2014	1	1	1
2015	1	1	1
2016	1	1	1
2017	1	1	1
2018	1	1	1
2019	1	1	1
2020	1	1	1
2021	1	1	1
2022	1	1	

**SUPERINTENDING ENGINEER,  
SOUTH CIRCLE,  
TAMILNADU POLICE HOUSING CORPORATION LTD.,  
MADURAI-14.**