

SCHEDULE - A							
Name of Work :							
CONSTRUCTION OF A NEW THIRUMANAMANDAPAM IN THE TEMPLE CAMPUS OF A/M SUGAVANESWARAR THIRUKKOIL AT SALEM ,SALEM TALUK & DISTRICT							
			MAIN BUILDING				
Sl. No.	Probable Quantity in figures and Words	unit	Description of Works	TNBP /NBC No.	Rate in figures and words	Unit in Figures and words	Amount
1	2	3	4	5	6	7	8
1	610 (six hundred and ten cubic metre Only)	Cum	Earth work excavation for foundation in all soils and sub-soils and to full depth as may be directed except in rock requiring blasting inclusive of shoring shuttering, bailing out water wherever necessary and depositing the surplus earth within the compound in places shown by the departmental officers with an initial lead of 10 mts and initial lift of 2 mts. and clearing and levelling the site, etc., complete complying with standard specification.	23 & 24		1 M ³ One cubic metre	

1	2	3	4	5	6	7	8
2		Cum	Cement Concrete 1:5:10 (One Cement, Five sand and Ten hard broken stone jelly) using 40 mm gauge hard broken granite stone jelly for foundation including dewatering wherever necessary and laid in layers of not more than 15 cm thick well rammed, consolidated and curing etc. complete complying with standard specification (For Foundation and Flooring)	28			
a	30 (Thirty cubic metre only)	Cum	Foundation			1 M ³ One cubic metre	
b	39 (Thirty nine cubic metre only)	Cum	Flooring			1 M ³ One cubic metre	
3	298 (Two hundred and ninety eight cubic metre only)	Cum	Supplying and filling of well gravel by lorry in basement filling including conveyance loading and unloading charges and all other incidental charges filling laying watering and consolidation etc., complete as directed by the Dept., Officers with standard specification.	24 & 25		1 M ³ One cubic metre	
4	70 (seventy cubic metre only)	Cum	Supplying and filling in foundation, basement, etc with filling sand in layers of not more than 15 cm thick well watered, rammed and consolidated etc. complete complying with standard specification and as directed by the departmental officers.	24 & 25		1 M ³ One cubic metre	

1	2	3	4	5	6	7	8
5	860 (eight hundred and sixty square metre Only)	Sqm	Supplying and erecting steel centering for sides and soffits including supports and strutting up to 3.29 metre height for plain surfaces such as RCC square or rectangular columns, top and bottom slabs of sunshade boxing sill slabs etc., with necessary facia etc., with all cross bracings using mild steel B.G., 10 sheets of size 90cm X 60cm stiffened with welded mild steel angles of size 25mm X 25mm X3mm for boarding laid over silver oak (Country wood) Joists of size 10cm X 6.5cm spaced at about 90cm centre to centre and supported by casurina props of 10cm to 13cm dia spaced at 75cm centre to centre etc., complete complying with standard specification.	30, 44H		1 M ² One Square metre	
6	400 (four hundred square metre only)	Sqm	Supplying and erecting steel shuttering including necessary supports for plain surfaces for reinforced cement concrete works such as grade beams, column footing, plinth beam, staircase steps, pedestals bed blocks cover slab etc., using mild steel B.G 10 sheets of size 90cm X 60cm Stiffened with mild steel angles of size 25mm X 25mm X 3mm for boarding laid over silver oak (Country wood) joists of size 10cm X 6.5cm spaced at about 90cm centre to centre, supported by casurina props 10cm to 13cm diameter spaced at 75cm centre to centre etc., complete complying with standard specification.	30, 44H		1 M ² One Sq.metre	

1	2	3	4	5	6	7	8
7			Supplying and erecting centering for sides and soffits including necessary supports and strutting upto 3.29 M height for plane surfaces as detailed below in all floors with all cross bracings using Mild Steel sheets of size 90 x 60 cm and 10 BG stiffened with welded Mild Steel angle of size 25mm x 25mm x 3 mm for boarding laid over silver oak joists of size 10cm x 6.50 cm spaced at abote 90 cm centre to centre and supported by casurina props of 10cm to 13 cm dia spaced at not more than 75 cm centre to centre etc. complete complying with the standard specificalton. (Payment for centering shall be given after the concrete is laid)				
	1480 (One thousand and four hundred eighty square metre only-	Sqm	For plane surfaces such as RCC floor slab, roof slab, beams, lintels, bed blocks, landing slab, waist slab, portico slabs and beams, etc.	30, 44H		1 M ² One Sq.metre	

1	2	3	4	5	6	7	8
8			<p>Providing and laying in position, Standardised Concrete Mix M20 Grade in accordance with IS : 456-2000, using 20 mm and down graded hard broken granite stone jelly for all RCC items of works with minimum cement content of 325 kg /m³ and maximum water cement ratio of 0.55, including admixture (plasticiser / super plasticiser) in recommended proportions as per IS : 9103 to accelerate, retard setting of concrete, improve workability without impairing strength and durability with about (5 cum)7730 kg of 20 mm machine crushed stone jelly and with about (3.30 cum)5156 kg of 10 - 12 mm machine crushed stone jelly and with about (4.79 cum)7670 kg of sand, but excluding cost of reinforcement grill and fabricating charges, centering and shuttering and also including laying, vibrating with mechanical vibrators, finishing, curing etc. and providing fixtures like fan clamps in RCC floor / roof slabs where ever necessary without claiming extra etc, complete complying with standard specification and as directed by Departmental officers. The course and fine aggregates to be used should comply with the requirements of IS Standards. (No separate payment will be made by the Department for the excess usage of materials.)</p>	30 V, VI, (SS) VII & 13			
a	105 (One hundred and five Cubic metre only)	Cum	a. Foundation and Basement			1 M ³ One cubic metre-	

1	2	3	4	5	6	7	8
b	118 (one hundred and eighteen cubic metre only)	Cum	b. Groundfloor			1 M ³ One cubic metre	
c	152 (one hundred and fifty two cubic metre only)	Cum	c.First floor			1 M ³ One cubic metre	
d	11 (Eleven cubic metre only)	Cum	d.Second Floor			1 M ³ One cubic metre	
9	540 (Five hundred and forty quintal only)	Qtl	Supplying, fabricating and placing in position Mild Steel / Ribbed Tor Steel grills for all RCC works as per design given including cost of steel and G.I. binding wire in all floors etc. complete complying with standard specification. (Contractor has to make his own arrangements for the supply of steel and binding wire)	86, 86A & 87		1 Qtl One quintal	

1	2	3	4	5	6	7	8
10	47 (Forty seven square metre only)	Sqm	Damp proof course with Cement Mortar 1:4 (One Cement and Four sand) 12mm thick mixed with best approved quality water proofing compound conforming to Indian Standard specification as specified by the departmental officers at 2% by weight of cement used, finishing and curing etc. complete complying with standard specification.			1 M ² One sq.metre	
11			Brick work using using Country Bricks of size 8 3/4" x 4 1/4" x 2 3/4 in Cement Mortar 1:6 (One cement and six sand) including curing neat finishing, etc., complete complying with standard specifiction.				
a	42 (Forty two cubic metre only)	Cum	a. Foundation and Basement			1 M ³ One cubic metre	
b	50 Fifty cubic metre only)	Cum	b. Ground floor			1 M ³ One cubic metre	
c	77 (Seventy seven cubic metre only)	Cum	c.First floor			1 M ³ One cubic metre	

1	2	3	4	5	6	7	8
d	10 (Ten cubic metre only)	Cum	d.Second Floor			1 M ³ One cubic metre	
12			Brick partition walls using best quality using Country Bricks of size 8-3/4" x 4-1/4" X2-3/4" in Cement Mortar 1:3 (One Cement and Three Sand) using hoop iron reinforcement if found necessary including curing etc. complete and as directed by the departmental officers. (Hoop iron reinforcement will be measured and paid for separately)				
a	16 (Sixteen square metre only)	Sqm	a. Ground floor			1 M ² One square metre	
b	20 (Twenty square metre only)	Sqm	b.First floor			1 M ² One square metre	
13	2555 (Two thousand five hundred and fifty five square metre only)	Sqm	Plastering with Cement Mortar 1:5 (One cement and Five sand), 12mm thick in all floors including curing etc. complete complying with standard specification and as directed by the departmental officers.	56 & 57		1 M ² One square metre	

1	2	3	4	5	6	7	8
14	827 (Eight hundred and twenty seven square metre only)	Sqm	Special ceiling plastering and finishing the exposed surface of all RCC items of work such as slabs, beams, sunshades, facia, canopy slab, staircase waist slab, landing slab etc., with Cement Mortar 1:3 (One Cement and Three Sand) 10mm thick including hacking the surfaces, providing cement mortar nosing, beading for sunshades, staircases, steps, landing slabs and curing, etc., in all floors complying with standard specification and as directed by the departmental officers	56 & 57		1 M ² One square metre	
15	736 (Seven hundred and thirty six square meter only)	Sqm	Floor finishing with CM 1:3 using Vetrified tiles size 600 mm x 600 mm x 8 mm " in all floors over a base layer of cement mortar 1:3 (One cement and three sand) 20mm thick and pointed with colour cement at the rate of 0.3 kg/ sqm including finishing neatly, curing, etc complete, complying with standard specification and as directed by the departmental officers complete. including cost and conveyance of all materials and all labour charges etc complete.			1 M ² One square metre	
16	57 (Fifty seven square meter only)	Sqm	Supplying and in fixing in position fully polished Rajestan Kotta stone of 20mm thick with machine cut edges of size 2' 0" x 2' 0" and above laid over base layerof cement mortar 1:3(one cement and three sand) - 20 mm thick & pointed with white cement and pigments to the colour of stones and polished neatly as directed by the deparmental offices.			1 M ² One square metre	

1	2	3	4	5	6	7	8
17	21 (Twenty one square metre only)	Sqm	Flooring with ceramic tiles of size 305 x 305 x 6 mm laid over 20 mm thick cement mortar 1:3 (One Cement and Three Sand) base mortar over the existing slab / floor including cutting the tiles to the required size with special cutter wherever necessary, laying in position and pointing with white cement mixed with colouring pigment at the rate of 0.3 Kg. / sq.m. etc., complete complying with standard specification. (The make and brand of the tiles should be got approved by Executive Engineer before use on works)			1 M ² One square metre	
18	47 (Forty Seven square metre only)	Sqm	Paving the floor with pre-polished concrete anti-skid step tiles (Required shape and design) of 20mm thick of approved quality and colour laid in Cement Mortar 1:3 (One Cement and Three sand) 20mm thick and pointed with white cement mixed with colouring pigment at the rate of 0.40 Kg. / sq.m., curing, etc., complete complying with standard specification and as directed by the departmental officers. (The make and brand of the tiles should be got approved by Executive Engineer before use on works)			1 M ² One square metre	

1	2	3	4	5	6	7	8
19	650 (Six hundred and fifty square metre only)	Sqm	Dadoing walls with following best approved quality, white / colour glazed tiles of following sizes set in Cement Mortar 1:2 (One Cement and Two sand) 10mm thick and pointing the joints with white cement mixed with colouring pigments at the rate of 0.40 Kg. / sq.m. neatly in all floors, curing, etc., complying with standard specification and as directed by the departmental officers.	39 A & J		1 M ² One square metre	
20	34 (Thirty four cubic metre only)	Cum	Weathering course in brick jelly lime concrete using broken brick jelly of size 20mm uniform gauge in pure slaked lime (no sand to be used) to the proportion of brick jelly to lime being 32:12.5 by volume and laid over the RCC roof slab in a single layer of required slope and finished by beating the concrete with wooden beaters of approved pattern, keeping the surface constantly wet by sprinkling lime jaggery water, etc., complete as per standard specification and as directed by the departmental officers.	51		1 M ³ One Cubic metre	
21	444 (Four hundred and forty four square metre only)	Sqm	Finishing the top of roof with one course of machine pressed tiles of size 230mm x 230mm x 20mm of approved quality set in Cement Mortar 1:3 (One Cement and Three Sand) 12mm thick mixed with water proofing compound conforming to ISS at 2% by weight of cement used and the joints pointed neatly to full depth of tiles with the same cement mortar mixed with red oxide and water proofing compound including curing etc., complete complying with standard specification and as directed by the departmental officers	44 H		1 M ² One square metre	

1	2	3	4	5	6	7	8
22	140 (one hundred and forty running meter)	Rm	Supplying and fixing in position best approved of BIS quality PVC rain water down fall pipes having a pressure of 4 kg. / sq.cm including cost of necessary PVC shoe, PVC bend, cast iron gratings of required diameter and special clamps, brass screws, nails, etc., and fixing of cast iron gratings at junction of parapet and the RCC roof slab including finishing neatly etc., complete. The rate shall be inclusive of cast of removable cast iron grating. The PVC pipe shall be fixed in wall with special type of "U" clamp at the centre of the pipe line in addition to those for more than 3.0 metre pipe length, etc., complete complying with standard specification.	107		1 Rm One Running Meter	
23	3385 (Three thousand three hundred and eighty five square metre only)	Sqm	Painting two coats of newly plastered wall surface with ready mixed plastic Interior emulsion paint of first class quality and of approved colour over a priming coat including thorough scrapping, clean removal of dirt, and including necessary plaster of paris putty, wherever required etc., complete complying with standard specification.			1 M ² One square metre	
24	935 (Nine hundred and thirty five square metre only)	Sqm	Painting two coats of newly plastered wall surface with water based exterior emulsion paint of first class quality and of approved colour over a priming coat including thorough scrapping, clean removal of dirt, and including necessary plaster of paris putty, wherever required etc., complete complying with standard specification.	65A		1 M ² One square metre	
25	5 (five numbers)	Nos	Supplying & fixing iron hold fast of size 230mmx40mmx5mm with necessary screws (S.I.404B)			One number Each	

1	2	3	4	5	6	7	8
26	0.16 (Zero decimal sixteen cubic metre only)	Cum	Supplying and fixing T.W Frames for Doors, Windows, Ventilators and other similar joinery works with the following sizes and sections including labour charges for wrought and put up in position and also for fixing hold fast in frames and masonry etc complete in all floors.			1 M ³ One Cubic metre	
27	12 (Twelve square metre only)	Sqm	Supplying and fixing of Teak Wood Panelled door shutter using Teak wood frame of size 127mm x 76mm and Door shutters Single leaf in position using 35mm thick solid core Flush shutters with teak play on both sides with teak wood lipping around including cost and labour for fixing the hold fasts and furniture fittings etc., complete as directed by the departmental officers complying with standard specification.			1 M ² One square metre	
28	210 (Two hundred and ten kilogram only)	Kg	Supplying & fixing of Collapsible Gate with iron Angles frame of size 40mm x 40mm x 6mm and inner side 12mm Square rods and necessary painting with one coat of Red Oxide primer including cost and conveyance of all materials and all labour charges etc complete as directed by departmental officers			Kg kilogram	

1	2	3	4	5	6	7	8
29	8.50 (Eight decimal five zero squire metre only)	Sqm	Supplying and fixing solid core Particle board flush door shutters with both sides 3mm thick commercial ply of 35mm thick with T.W. internal lipping (internal alround) with necessary adhesive and C.P. screws, including fixing of aldrops, tower bolts, hinges and lock strike plates, putty, fevical, varnish for T.W. lipping with thinner colouring agent etc., The rate includes cost of materials and cost for aluminium furniture fittings such as 3 nos Alu. hinges 125mm, 1 no Alu. aldrip 200 x 16mm, 1no Alu. tower bolt of 150x12mm and 1 no Alu.100mm D type Handle 1 no door stopper with rubber bush incase of Single leaf door inclusive of labour charges for fixing in position etc., complete. All Aluminium furniture fittings are to be anodised with matt finish under electrically controlled condition in accordance with ISI specification 1868/1968 for anodic film thickness of not less than 15 microns, The rate is inclusive cost of fevical and fixing charges, transportation, loading, unloading and all other incidental charges, handling charges etc., complete complying with standard specification.			1 M ² One Square metre	
30	3.50 (Three decimel and five zero square metre only)	Sqm	Supplying and fixing rigid PVC paneled door shutter made from M.S box section of size 19mmx19mm, 19gauge covered with heat moulded PVC 5mm thick and width of 50mm to form styles and rails. The panel shall be 5mm thick PVC rigid foam sheet inserted into the frame sealed to the styles and rails and 5mmx25mm PVC beading is provided on all sides with furniture fittings etc., complete.			1 M ² One square metre	

1	2	3	4	5	6	7	8
31	78 (Seventy eight square metre only)	Sqm	Supplying and fixing UPVC (Un-Plasticized Polyvinyl Chloride) Windows of casement type (open) from the profile the size of outer frame 60mm x 58mm and shutter profile are reinforcement with GI/1mm 125GSM and 100% corrosion free, the profiles are multi chambered sections with wall thick of 2mm. The EPDM rubber (black colour) covered with over all the edges of frame and shutter the shutter will be provided with Espag multi power point locks and also it operates as handle. The corners and joints should be welded and cleaned. Radiations free pin headed plain or brown colour glass 4mm thick should be provided to the shutter and it should not allow leakage of water even at most ranging storms and should have key lockable action, security protective hinges, strong locking systems and as per size for arresting noise and energy loss. The connecting mechanism between sash and outer frame that enables opening of the window. The window should be fixed to the wall with 100% packing with screws and silicon packing all round the frames. The window should be got approved from the Executive Engineer before use on work			1 M ² One square metre	

1	2	3	4	5	6	7	8
32	37 (Thirty seven square metre only)	Sqm	Supplying and fixing UPVC (Un-Plasticized Polyvinyl Chloride) Louvered Ventilators of from the profile the size of outer frame 60mm x 58mm and shutter profile size of 60 x 78mm both profiles are reinforced with GI/1mm 125GSM and 100% corrosion free, the profile are multi chambered sections with wall thick of 2mm.The EPDM rubber (black colour) covered with all over the edges of frame and shutter. The corners and joints should be welded and cleaned. Radiations pin headed glass 4mm thick should be provided in the louvers. The window should be fixed to the wall with 100% packing with screws and silicon packing all round the frames. The ventilator should be got approved from the Executive Engineer before use on work			1 M ² One square metre	
33	2340 (Two thousand three hundred and forty kilogram)	Kg	Supplying and fixing mild steel grill for windows and hand rails etc complete., including cost conveyance of all materials and fixing in position including priming coat etc complete with standard specifications.			Kg kilogram	
34	84 (Eighty four square metre only)	Sqm	Painting new iron works such as steel doors, windows, ventilators, window bars, balustrades etc., with two coats of best approved first quality and colour of synthetic enamel paint over the existing red oxide priming coat in all floors excluding cost of priming coat etc., complete complying with standard specification. (The make, quality and colour of paint should be got approved by the Executive Engineer before use on works.) 10 Sqm			1 M ² One square metre	

1	2	3	4	5	6	7	8
35	10 (Ten square metre only)	Sqm	Best French (lac) polishing with 1 coats S.I.360 to T.W. Doors, Windows, Ventilators, including cleaning the surfaces etc. complete complying with standard specifications.			1 M ² One square metre	
36	12 (Twelve square metre only)	Sqm	Supplying and fixing of Cudppah Slab of 50 mm thick for the Cup Boards including labour charges for fixing Cudappah Slab to the Cub Boards as directed by the Departmental Staff.			1 M ² One square metre	
			Internal and External Water Supply arrangements				
37			Supplying laying and jointing UPVC pipes of super thick of approved quality and best quality conforming to ISS and with ISI mark of the following sizes including cutting threading and fixing UPVC specials but excluding cost of such specials. Fixing into Bore well / below ground level for erection of compressor motor, suction line air pipe etc., complete complying with standard specification.				
	6 (Six Running metre only)	Rm	25mm dia UPVC Pipe			1 RM Running metre	

1	2	3	4	5	6	7	8
38			Supplying, laying and jointing UPVC Pipes of the following dia of approved quality and best variety above ground level including fixing of uPVC Specials but excluding cost of such specials and cutting and threading of pipes but including fixing to the wall with necessary clamps and screws, Teak wood plugs making holes in the wall (or) drilling holes in the roof and making good of the disturbed portion to the oriupVCnal condition with necessary brick work and plastering wherever necessary with necessary scaffolding charges. etc., complete complying with standard specification.				
a	103 (One hundred and three running metre)	Rm	a) 25mm dia UPVC Pipe			1 RM Running metre	
b	50 (Fifty running metre)	Rm	b) 20mm dia UPVC Pipe			1 RM Running metre	
39			Supplying and fixing in position the following UPVC Specials of heavy type and approved quality and good variety excluding fixing charges but including necessary cutting and threading of UPVC pipes, jointing the UPVC specials and painting with two coats with good variety and best quality synthetic enamel paint over a coat of red oxide primer and jointing the specials with pipe line using shellac etc., complete complying with standard specification. (The UPVC specials should be got approved by the Executive EnupVCneer concerned before use on works.)				
a	15 Fifteen numbers)	Nos	25mm UPVC Coupling			1 No Each	

1	2	3	4	5	6	7	8
b	20 (Twenty numbers)	Nos	25mm UPVC Elbow			1 No Each	
c	6 (Six numbers)	Nos	25mm UPVC Union			1 No Each	
d	10 (Ten numbers)	Nos	25mm UPVC TEE			1 No Each	
e	5 (Five numbers)	Nos	25mm UPVC Bend			1 No Each	
f	20 (Twenty numbers)	Nos	25mm x 20mm UPVC Reducer			1 No Each	
g	2 ² (Two numbers)	Nos	20mm UPVC Coupling			1 No Each	
h	8 (Eight numbers)	Nos	20mmUPVC Union			1 No Each	
i	8 (Eight numbers)	Nos	20mm UPVC Elbow			1 No Each	
j	17 (Seventeen numbers)	Nos	15mm Hex Nipple			1 No Each	
40			Supplying and fixing in position first quality and approved variety of Ball Valve with BIS make of the following dia including cost of shellac, thread balls, etc., complete complying with standard specifications (for both internal and external water supply arrangements). The valves to be used on work shall be got approved by the Executive Engineer before use on work.				

1	2	3	4	5	6	7	8
	1 (one number)	No	25mm dia Ball Valve			1 No Each	
41			Supplying and fixing in position first quality and approved variety of Ball Valve Handle with BIS make of the following dia including cost of shellac, thread balls, etc., complete complying with standard specifications (for both internal and external water supply arrangements).			1 No Each	
	1 (one number)	No	25 mm dia Ball Valve Handle				
42	21 (Twenty one numbers only)	Nos	Supplying and fixing in position 15mm dia Brass CP screw down tap (heavy duty) of approved make conforming to BIS specifications and quality including cost of shellac, thread, etc., complete complying with standard specification and including cutting and threading wherever necessary. (Taps should be got approved by the Executive Engineer before use on the works)			1 No Each	
43	4 (Four numbers)	Nos	Supplying and fixing of PVC water storage tank of best approved quality and make of super thick with lid of capacity of 1000 litres with accessories etc., complete as directed by the departmental officer. (The PVC water storage tank should be got approved by the Engineer before use on work)			1 No Each	

1	2	3	4	5	6	7	8
44	2 (Two numbers)	Nos	<p>Supplying and fixing in position white / colour glazed European Water Closet of best quality and approved make with 100 mm "P" or "S" trap connecting with CI pipe of 100mm dia / PVC pipe of 110mm dia, double flapped riuPVCd PVC black seat and seat cover with CP brass hinges including cost of white cement, cement for packing, spun yarn, teak wood plugs, brass screws, etc., including supplying and fixing 10 litres capacity PVC / 12.5 litres capacity porcelin low level flushing tank with a pair of CI brackets, etc., complete with all fittings such as 15mm brass ball valve with polythene float with brass handle, union, coupling connected by means of 40mm white PVC flush hand using Indian adopter joint including all internal fittings such as 15mm brass connections, 15mm GM wheel valve, 15mm brass nipple (2 Nos.), 15mm nylon connection, TW plugs, screws and also uPVCving necessary connection to the PVC pipe including cost of 600mm length of 110mm dia PVC pipe and painting the CI brackets with 2 coats of approved paint over one coat of red oxide primer, dismantling the masonry and re-doing the dismantled masonry to oriuvPVCnal condition etc. complete complying with standard specifications. (The EWC and flushing tank wiht all accessories should be got approved by the Executive EnuPVCner before use on works)</p>			1 No Each	

1	2	3	4	5	6	7	8
45	2 (Nos two numbers)	Nos	Supplying and fixing in position best Indian make Wash hand basin of size 550mm X 400mm and approved brand and quality with a pair of C.I. Brackets fixed to wall with necessary teakwood plugs and brass screws one No. of 15mm C.P. Pillar tap 32mm C.P. Waste coupling, rubber plug and chain, 32mm G. I. Union, 32mmG. I. Waste pipe 15mm dia G. M. Wheel valve 15mm brass nipple and nylon connection including cost of white lead TW Plugs clamps, rubber washer, etc., complete (The wash hand basin should be got approved from the Executive Engineer before use on works).			1 No -Each-	
46			Supplying and fixing in position PVC specials of the following dia and types of approved quality confirming to BIS and providing leak proof joints including fixing to the walls and using connection to the PVC soil stacks, dismantling the masonry or RCC works and re-doing the dismantled portion to original condition etc., complete complying with standard specifications. (The PVC specials should be got approved by the Executive Engineer before use on works).				
a	2 (Two numbers)	Nos	a. 110mm dia door bend			1 No Each	
b	2 (Two numbers)	Nos	b. 110mm dia plain bend			1 No Each	
c	1 (Two numbers)	Nos	c. 100mm dia Tee			1 No Each	

SCHEDULE - A							
	<u>Name of Work :</u>						
CONSTRUCTION OF A NEW THIRUMANAMANDAPAM IN THE TEMPLE CAMPUS OF A/M SUGAVANESWARAR THIRUKKOIL AT SALEM ,SALEM TALUK & DISTRICT							
			External Sanitary works				
Sl. No.	Probable Quantity in figures and Words	unit	Description of Work	TNBP /NBC No.	Rate in figures and words	Unit in Figures and words	Amount in Rupees
1	2	3	4	5	6	7	8
1	8 (Eight cubic metre Only)	Cum	Earth work excavation for foundation in all soils and sub-soils and to full depth as may be directed except in rock requiring blasting inclusive of shoring shuttering, bailing out water wherever necessary and depositing the surplus earth within the compound in places shown by the departmental officers with an initial lead of 10 mts and initial lift of 2 mts. and clearing and levelling the site, etc., complete complying with standard specification.	23 & 24		1 M ³ One cubic metre	
2	35 (Thirty fivecubic metre only)	Cum	.Earth work open excavation (Open excavation)in all soils and sub-soils and to full depth as may be directed except in rock requiring blasting inclusive of shoring shuttering, bailing out water wherever necessary and depositing the excavated earth with a lead of 10 mts. within the compound in places shown by the departmental officers and clearing and levelling the site, etc., complete complying with standard specification.	23 & 24		1 M ³ One cubic metre	
3	2 (Two cubic metre only)	Cum	Supplying and filling 40mm gauge HBGS stone jelly for dispersion trench including loading conveying and unloading and as directed by the departmental officers etc. complete complying with standard specification.			1 M ³ One cubic metre	

Contractor

Assistant Commissioner,
A/m Sugavaneswarar Thirukkcoil, Salem

1	2	3	4	5	6	7	8
4	6 (Six cubic metre only)	Cum	Cement Concrete 1:5:10 (One Cement, Five sand and Ten hard broken stone jelly) using 40 mm gauge hard broken granite stone jelly for foundation including dewatering wherever necessary and laid in layers of not more than 15 cm thick well rammed, consolidated and curing etc. complete complying with standard specification	28		1 M ³ One cubic metre	
5			Supplying and erecting centering for sides and soffits including necessary supports and strutting upto 3.29 M height for plane surfaces as detailed below in all floors with all cross bracings using Mild Steel sheets of size 90 x 60 cm and 10 BG stiffened with welded Mild Steel angle of size 25mm x 25mm x 3 mm for boarding laid over silver oak joists of size 10cm x 6.50 cm spaced at abote 90 cm centre to centre and supported by casurina props of 10cm to 13 cm dia spaced at not more than 75 cm centre to centre etc. complete complying with the standard specificalton. (Payment for centering shall be given after the concrete is laid)	30 (8) 86, 86A			
	11 (Eeven squire metre only)	Sqm	For plane surfaces such as RCC floor slab, roof slab, beams, lintels, bed blocks, landing slab, waist slab, portico slabs and beams, etc.			1 M ² One Sq.metre	

Contractor

Assistant Commissioner,
A/m Sugavaneswarar Thirukkcoil, Salem

1	2	3	4	5	6	7	8
6			Providing and laying in position, Standarised Concrete Mix M20 Grade in accordance with IS : 456-2000, using 20 mm and down graded hard brocken granite stone jelly for all RCC items of works with minimum cement content of 325 kg /m ³ and maximum water cement ratio of 0.55, including admixture (plasticiser / super plasticiser) in recommanded proportions as per IS : 9103 to accelerate, retard setting of concrete, improve workability without impairing strength and durability with about (5 cum)7730 kg of 20 mm machine crushed stone jelly and with about (3.30 cum)5156 kg of 10 - 12 mm machine crushed stone jelly and with about (4.79 cum)7670 kg of sand, but excluding cost of reinforcement grill and fabricating charges, centering and shuttering and also including laying, vibrating with mechanical vibrators, finishing, curing etc. and providing fixtures like fan clamps in RCC floor / roof slabs where ever necessary without claiming extra etc, complete complying with stsndard specification and as directed by Departmental officers. The course and fine aggrigates to be used should comply with the requirements of IS Standards. (No separate payment will be made by the Department for the excess usage of materials.)	30 V, VI, (SS) VII & 13			
	2 (Two cubic metre only)	cum	Foundation and Basement			1 M ³ One cubic metre	
7	7 (Seven cubic metre only)	cum	Brick work using using Country Bricks of size 8 3/4" x4 1/4"x 2 3/4 in Cement Mortar 1:5 (One cement and Five sand) including curing neat finishing, etc., complete complying with standard specifiction.			1 M ³ One cubic metre	
8	3 (Three square metre only)	Sqm	Brick partition walls using best quality using Country Bricks of size 8-3/4" x 4-1/4" X2-3/4" in Cement Mortar 1:3 (One Cement and Three Sand) using hoop iron reinforcement if found necessary including curing etc. complete and as directed by the departmental officers. (Hoop iron reinforcement will be measured and paid for separately)			1 M ² One sq metre	

1	2	3	4	5	6	7	8
9	79 (Seventy nine square metre only)	Sqm	Plastering with Cement Mortar 1:5 (One cement and Five sand) , 12mm thick in all floors including curing etc. complete complying with standard specification and as directed by the departmental officers.	56 & 57		1 M ² One sq metre	
10	10 (Ten square metre only)	Sqm	Manufacturing, supplying and fixing Precast Reinforced Cement Concrete slabs of following thickness in RCC 1:1.5:3 (one cement, one and half sand and three aggregates), using following HBGS jelly excluding cost of reinforcement steel in position but including cost of moulding charges, casting of slab, finishing, curing and fixing in position in all floors etc., complete complying with standard specification and as directed. 50mm thick			1 M ² One sq metre	
11	14 (Forteen running metre only)		Supplying, laying and jointing glazed stone ware pipes of the following dia of approved quality with spigot and socket ends and fixing them in dry condition using spun yarn and cement including petty masonry shoring and strutting wherever found necessary and laying the pipe line in the alignment at the specified gradient and testing with necessary tools and plants, etc., and re-filling the trench with excavated earth and levelling the ground etc., complete complying with standard specifications. (Earth work excavation, re-filling with excavated earth will be measured and paid separately).	96 & 97		1 Rm One running metre	
12	4.80 (Four decimel eight zero square metre only)	Sqm	Supplying, laying and jointing glazed stoneware pipes of following dia of approved best quality with spigot and socket ends (in reverse direction) in dry condition and laid in loose joints (i.e.) without cement and spun yarn, so that the waste water can be drained to the trenches already available, excluding cost of earth work excavation, cost of re-filling with sand / earth, but including laying the pipe in true alignment and gradient and conducting required water supply test for draining with necessary tools and plants, etc., complete complying with standard specifications.	96 & 97		1 M ² One square metre	

1	2	3	4	5	6	7	8
13	1 (one number only)	Nos	Supplying and fixing PVC ventilating shaft of 110mm dia (having working pressure 4 kg. / sq.cm) with 3 metre height including cost of PVC cylindrical cowl of best approved quality etc., complete complying with standard specifications and as directed by the departmental officers			1 One number Each	
14	1 (one number only)	Nos	Supplying and fixing in position PVC specials of the following dia and types of approved quality confirming to BIS and providing leak proof joints including fixing to the walls and giving connection to the PVC soil stacks, dismantling the masonry or RCC works and re-doing the dismantled portion to original condition etc., complete complying with standard specifications. (The PVC specials should be got approved by the Executive Engineer before use on works). - 110 mm PVC Tee			1 One number Each	
15	1 (One cubic metre only)	Cum	Cement Concrete 1:3:6 (One Cement, Three sand and Six broken stone jelly) using 20mm size hard broken stone jelly excluding cost of centering shuttering reinforcement grills and fabrication charges but including curing etc. complete.			1 M ³ One cubic metre	
16	5 (Five square metre only)	Sqm	Plastering the surface of walls with Cement Mortar 1:3 (One cement and Three sand), 12mm thick in all floors including curing etc., complete complying with standard specification and as directed by the departmental officers.			1 M ² One square metre	
17	2.45 (Two decimel four five quintal)	Qtl	Supplying, fabricating and placing in position Mild Steel / Ribbed Tor Steel grills for all RCC works as per design given including cost of steel and G.I. binding wire in all floors etc. complete complying with standard specification. (Contractor has to make his own arrangements for the supply of steel and binding wire)			1 Qtl One quintal	
					Net Total		
					Add GST 12%		
					Gross Total		

Contractor

Assistant Commissioner,
A/m Sugavaneswarar Thirukkoi, Salem

1	2	3	4	5	6	7	8
			Total Number of Items 17 - (seventeen) only				

SCHEDULE - A							
Name of work							
CONSTRUCTION OF A NEW THIRUMANAMANDAPAM IN THE TEMPLE CAMPUS OF A/M SUGAVANESWARAR THIRUKKOIL AT SALEM ,SALEM TALUK & DISTRICT							
			Construction Compound Wall				
Sl. No.	Probable Quantity in figures and Words	units	Description of Works	TNBP /NBC No.	Rate in figures and words	Unit in Figures and words	Amount in rupees
1	2	3	4	5	6	7	8
1	95 (Ninety five cubic metre Only)	Cum	Earth work excavation for foundation in all soils and sub-soils and to full depth as may be directed except in rock requiring blasting inclusive of shoring shuttering, bailing out water wherever necessary and depositing the surplus earth within the compound in places shown by the departmental officers with an initial lead of 10 mts and initial lift of 2 mts. and clearing and levelling the site, etc., complete complying with standard specification.	23 & 24		1 M ³ One cubic metre	
2	10 (Ten cubic metre only)	Cum	Cement Concrete 1:5:10 (One cement, Five sand and Ten hard broken stone) using 40 mm gauge hard broken jelly for Foundation including laying, consolidating, finishing, rendering the top surface rough to receive the floor, curing, etc. complete complying with standard specification. (The rate is inclusive of necessary planking for panelling wherever necessary and as directed by the departmental officers	28		1 M ³ One cubic metre	
3	73 (Seventy three cubic metre only)	Cum	Brick work using using Country Bricks of size 8 3/4" x4 1/4"x 2 3/4 in Cement Mortar 1:6 (One cement and six sand) including curing neat finishing, etc., complete complying with standard specifiction.			1 M ³ One cubic metre	

1	2	3	4	5	6	7	8
4	75 (Seventy five square metre only)	Sqm	Supplying and erecting steel centering including necessary supports for plane surfaces for Reinforced Cement Concrete works such as column footings, column pedestals, plinth beams, grade beams, staircase steps, etc. which require only nominal strutting using mild steel sheets of size 90cm x 60cm and 10 BG stiffened with welded mild steel angles of size 25mm x 25mm x 3 mm for boarding, laid over silver oak joists of size 10cm x 6.5cm spaced at about 75cm centre to centre or at suitable intervals etc. complete in all floors complying with standard specification. (Payment for centering shall be given after the concrete is laid)	30 (8) 86, 86A		1 M ² One Square metre	
5	220 (Two hundred and twenty square metre only)	Sqm	Supplying and erecting centering for sides and soffits including necessary supports and strutting upto 3.29 M height for plane surfaces as detailed below in all floors with all cross bracings using Mild Steel sheets of size 90 x 60 cm and 10 BG stiffened with welded Mild Steel angle of size 25mm x 25mm x 3 mm for boarding laid over silver oak joists of size 10cm x 6.50 cm spaced at about 90 cm centre to centre and supported by casurina props of 10cm to 13 cm dia spaced at not more than 75 cm centre to centre etc. complete complying with the standard specification. (Payment for centering shall be given after the concrete is laid)	28		1 M ² One Square metre	
6			Providing and laying in position, standardised concrete Mix M-20 Grade in accordance using 20 mm with IS : 45-2000 and down graded hard broken granite stone jelly for all RCC items of works with minimum cement content of 325 kg/m ³ and maximum water cement ratio of 0.55 including admixture (Plasticiser/super plasticiser) in recommended proportions as per IS:9103 to accelerate setting of concrete, improve workability without impairing strength and durability with about (5 cu.m) 7730 Kg of 20mm machine crushed stone jelly and with about (3.3 cu.m) 5156kg of 10-12 mm machine crushed stone jelly and with about (4.79 cu.m) 7670 kg of sand but excluding cost of reinforcement grill and fabricating charges, centering and shuttering and also including laying, vibrating with mechanical vibrators, finishing, curing etc and providing fixtures like fan clamps in the RCC floor/roof slabs wherever necessary without claiming extra complete complying with standard specification and as directed by the departmental officers. The course and fine aggregates to be used should comply with the requirements of IS standards.	30 V, VI, (SS) VII & 13			

1	2	3	4	5	6	7	8
a	28 (Twenty eight cubic metre only)	Cum.	a.Foundation and Basement			1 M ³ One cubic metre	
b	9 (Nine cubic metre only)	Cum.	b.Above Basement in Ground Floor			1 M ³ One cubic metre	
7	27 (Twenty seven quintal only)	qtl	Supplying, fabricating and placing in position Mild Steel / Ribbed Tor Steel grills for all RCC works as per design given including cost of steel and G.I. binding wire in all floors etc. complete complying with standard specification. (Contractor has to make his own arrangements for the supply of steel and binding wire)	30, 44H		1 qtl quintal	
8	640 (Six hundred and forty square metre only)	Sqm	Plastering with cement mortar 1:5 (One cement and five sand) 12mm.thick in all floors etc, complete complying with standard specification.			1 M ² One Square metre	
9	1520 (one thousand five hundred and twenty kilogram)	kg	Suplying and fixing M.S GRILLS for Compound wall Grills & Gate including cost of materials and labour charges for cutting to required sizes,fabricating,welding and transporting at site of work and including the cost of one coat red oxide primer etc., complte complying as directed by the departmental officers.			1 kg one kilogram	
10	100 (One hundred square metre only)	Sqm.	Painting new iron works such as steel doors, windows, ventilators, window bars, balustrades etc., with two coats of best approved first quality and colour of synthetic enamel paint over the existing red oxide priming coat in all floors excluding cost of priming coat etc., complete complying with standard specification. (The make, quality and colour of paint should be got approved by the Executive Engineer before use on works.)	28 & 39H		1 M ² One Square metre	

1	2	3	4	5	6	7	8
11	640 (Six hundred forty metre only)	Sqm	Painting the wall two coats with approved weather proof Exterior Emulsion paint over one primer coat of over cement plastered wall surface ect., complete complying with standard specification.	56 & 57		1 M ² One square metre	
					Net Total		
					Add GST 12%		
					Gross Total		
			Total Number of Items 11 - (eleven) only				

SCHEDULE - A							
<u>Name of Work :</u>							
CONSTRUCTION OF A NEW THIRUMANAMANDAPAM IN THE TEMPLE CAMPUS OF A/M SUGAVANESWARAR THIRUKKOIL AT SALEM ,SALEM TALUK & DISTRICT							
			Construction of Leach Pit for Disposal of Sullage Water				
Sl. No.	Probable Quantity in figures and Words	unit	Description of Works	TNBP /NBC No.	Rate in figures and words	Unit in Figures and words	Amount in rupees
1	2	3	4	5	6	7	8
1	25 (Twenty five cubic metre Only)	Cum	Earth work excavation for foundation in all soils and sub-soils and to full depth as may be directed except to rock requiring blasting but including shoring strutting and bailing out water wherever necessary and refilling the sides of foundation with excavated earth in layers of not more than 15cm thick well consolidated and depositing the surplus earth within the compound with an initial lead of 10 metres and lift of 2 metres in places as shown by the departmental officers and clearing levelling the site etc complete complying with standard specification.TNBP No : SS 23 and 24	23 & 24		1 One cubic metre	
2	1 (one cubic metre only)	Cum	Cement concrete 1:5:10 (one cement five sand and ten jelly) using 40mm size hard broken granite stone jelly for foundation including dewatering if found necessary and laid in layers of not more than 15cm thick well rammed and consolidated etc. complete complying with standard specification	28		1 One cubic metre	
3	2 (Two cubic metre only)	Cum	Brick work in cement mortar 1:5 (one cement and five sand) using country bricks of size 8¾”x4¼”x2¾” for the following items including curing etc complete complying with standard specification.TNBP No : SS 31 and similar to 31C			1 M ³ One cubic metre	
4	1 (One cubic metre only)	Cum	Brick work with Dry Bricks using country bricks of size 8¾”x4¼”x2¾” for the following items including curing etc complete complying with standard specification. TNBP No : SS 31 and similar to 31C in Ground floor			1 M ³ One cubic metre	

1	2	3	4	5	6	7	8
5	3 (Three square metre Only)	Sqm	Supplying and erecting steel shuttering including necessary supports for plain surfaces for reinforced cement concrete works such as grade beams, column footing, plinth beam, staircase steps, pedestals bed blocks cover slab etc., using mild steel B.G 10 sheets of size 90cm X 60cm Stiffened with mild steel angles of size 25mm X 25mm X 3mm for boarding laid over silver oak (Country wood) joists of size 10cm X 6.5cm spaced at about 90cm centre to centre, supported by casurina props 10cm to 13cm diameter spaced at 75cm centre to centre etc., complete complying with standard specification.			1 M ² One square metre	
6	13 (Thirteen square metre Only)	Sqm	Plastering with Cement Mortar 1:5 (One cement and Five sand), 12mm thick in all floors including curing etc. complete complying with standard specification and as directed by the departmental officers.	56 & 57		1 M ² One square metre	
7	3 (Three square metre Only)	Sqm	Manufacturing, supplying and fixing Precast Reinforced Cement Concrete slabs of following thickness in RCC 1:1.50:3 (one cement, one and half sand and three aggregates), using following HBGS jelly excluding cost of reinforcement steel in position but including cost of moulding charges, casting of slab, finishing, curing and fixing in position in all floors etc., complete complying with standard specification and as directed. 50mm thick	30, 44H		1 M ² One square metre	
8	2 (Two cubic metre only)	Cum	Supplying and filling 40mm gauge HBGS stone jelly for dispersion trench including loading conveying and unloading and as directed by the departmental officers etc. complete complying with standard specification.			1 M ³ One cubic metre	
9	2 (Two nos only)	Nos	Supplying and fixing in position 110mm dia PVC tee of best quality with spun yarn and conducting necessary water test etc., complete as directed by the departmental officers. Complete complying with standard specification. (The stoneware specials are to be got approved by the Executive Engineer before use on works).			1 No Each	
10	0.17 (Zero decimel one seven quintal)	qtl	Supplying fabricating and placing in position mild steel or ribbed for steel bar / rods for reinforcement grill for all RCC works including cost of steel and binding wire and labour charges for decoiling cutting binding and typing the grills etc complete complying with standard specification as directed by the departmental officers.	86, 86A & 87		1 Qtl one quintal	

1	2	3	4	5	6	7	8
					Net Total		
					Add GST 12%		
					Gross Total		
			Total Number of Items 10 - (ten) only				

SCHEDULE - A							
	<u>Name of Work :</u>						
CONSTRUCTION OF A NEW THIRUMANAMANDAPAM IN THE TEMPLE CAMPUS OF A/M SUGAVANESWARAR THIRUKKOIL AT SALEM ,SALEM TALUK & DISTRICT							
			Construction of Toilet block				
Sl. No.	Probable Quantity in figures and Words	unit	Description of Works	TNBP /NBC No.	Rate in figures and words	Unit in Figures and words	Amount in rupees
1	2	3	4	5	6	7	8
1	48 (Forty Eight cubic metre Only)	cum	Earth work excavation for foundation (for narrow excavation) in all soils and sub-soils and to full depth as may be directed except in rock requiring blasting inclusive of shoring shuttering, bailing out water wherever necessary and depositing the surplus earth within the compound in places shown by the departmental officers with an initial lead of 10 mts and initial lift of 2 mts. and clearing and levelling the site, etc., complete complying with standard specification.	23 & 24		1 M ³ One cubic metre	
2	11 (Eleven cubic metre only)	cum	Cement Concrete 1:5:10 (One Cement, Five sand and Ten hard broken stone jelly) using 40 mm gauge hard broken granite stone jelly for foundation including dewatering wherever necessary and laid in layers of not more than 15 cm thick well rammed, consolidated and curing etc. complete complying with standard specification	28		1 M ³ One cubic metre	

1	2	3	4	5	6	7	8
3	13 (Thirteen cubic metre only)	cum	Randum Rubble Masonry in Cement Mortor 1:5 One Cement and five Sand including curing etc complete complying with standard specification			1 M ³ One cubic metre	
4	5 (Five cubic metre only)	cum	Refilling with excavated earth other than sand with an initial head load of 100 mts. and depositing the earth as shown by the departmental officers in layers of not more than 15 cm thick well rammed, watered and consolidated etc. complete complying with standard specification	24 & 25		1 M ³ One cubic metre	
5	2 (Two cubic metre only)	cum	Supplying and filling in foundation, basement, etc with filling sand in layers of not more than 15 cm thick well watered, rammed and consolidated etc. complete complying with standard specification and as directed by the departmental officers.	24 & 25		1 M ³ One cubic metre	
6	13 (Thirteen square metre only)	Sqm	Supplying and erecting steel centering for sides and soffits including supports and strutting up to 3.29 metre height for plain surfaces such as RCC square or rectangular columns, top and bottom slabs of sunshade boxing sill slabs etc., with necessary facia etc., with all cross bracings using mild steel B.G., 10 sheets of size 90cm X 60cm stiffened with welded mild steel angles of size 25mm X 25mm X3mm for boarding laid over silver oak (Country wood) Joists of size 10cm X 6.5cm spaced at about 90cm centre to centre and supported by casurina props of 10cm to 13cm dia spaced at 75cm centre to centre etc., complete complying with standard specification.			1 M ² One Square metre	

1	2	3	4	5	6	7	8
7	7 (Seven square metre only)	sqm	Supplying and erecting steel shuttering including necessary supports for plain surfaces for reinforced cement concrete works such as grade beams, column footing, plinth beam, staircase steps, pedestals bed blocks cover slab etc., using mild steel B.G 10 sheets of size 90cm X 60cm Stiffened with mild steel angles of size 25mm X 25mm X 3mm for boarding laid over silver oak (Country wood) joists of size 10cm X 6.5cm spaced at about 90cm centre to centre, supported by casurina props 10cm to 13cm diameter spaced at 75cm centre to centre etc., complete complying with standard specification.	30, 44H		1 M ² One Square metre	
8			Supplying and erecting centering for sides and soffits including necessary supports and strutting upto 3.29 M height for plane surfaces as detailed below in all floors with all cross bracings using Mild Steel sheets of size 90 x 60 cm and 10 BG stiffened with welded Mild Steel angle of size 25mm x 25mm x 3 mm for boarding laid over silver oak joists of size 10cm x 6.50 cm spaced at abote 90 cm centre to centre and supported by casurina props of 10cm to 13 cm dia spaced at not more than 75 cm centre to centre etc. complete complying with the standard specificaion. (Payment for centering shall be given after the concrete is laid)	30(8),8 6, 86A			
a	56 (Fifty six square metre only)	sqm	For plane surfaces such as RCC floor slab, roof slab, beams, lintels , bed blocks, landing slab, waist slab, portico slabs and beams, etc.			1 M ² One square metre	

1	2	3	4	5	6	7	8
9			Providing and laying in position, Standarised Concrete Mix M20 Grade in accordance with IS : 456-2000, using 20 mm and down graded hard brocken granite stone jelly for all RCC items of works with minimum cement content of 325 kg /m3 and maximum water cement ratio of 0.55, including admixture (plasticiser / super plasticiser) in recommanded proportions as per IS : 9103 to accelerate, retard setting of concrete, improve workability without impairing strength and durability with about (5 cum)7730 kg of 20 mm machine crushed stone jelly and with about (3.30 cum)5156 kg of 10 - 12 mm machine crushed stone jelly and with about (4.79 cum)7670 kg of sand, but excluding cost of reinforcement grill and fabricating charges, centering and shuttering and also including laying, vibrating with mechanical vibrators, finishing, curing etc. and providing fixtures like fan clamps in RCC floor / roof slabs where ever necessary without claiming extra etc, complete complying with stsndard specification and as directed by Deint over one coat of red oxide primer, dismantling the masonry and re-doing the dismantled masonry to original condition etc. complete complying with standard specifications. (The EWC and flushing tank wiht all acc				
a	2 (Two cubic metre only)	cum	Foundation and Basement			1 M ³ One cubic metre	

1	2	3	4	5	6	7	8
b	7 (seven cubic metre only)	cum	Ground floor			1 M ³ One cubic metre	
10	8.00 (Eight quintal only)	qtl	Supplying, fabricating and placing in position Mild Steel / Ribbed Tor Steel grills for all RCC works as per design given including cost of steel and G.I. binding wire in all floors etc. complete complying with standard specification. (Contractor has to make his own arrangements for the supply of steel and binding wire)	86, 86A & 87		1qtl one quintal	
11	14 (Fourteen square metre only)	sqm	Damp proof course with Cement Mortar 1:4 (One Cement and Four sand) 12mm thick mixed with best approved quality water proofing compound conforming to Indian Standard specification as specified by the departmental officers at 2% by weight of cement used, finishing and curing etc. complete complying with standard specification.			1 M ² One square metre	
12			Brick work using using Country Bricks of size 83/4" x4 1/4"x 2 3/4 in Cement Mortar 1:6 (One cement and six sand) including curing neat finishing, etc., complete complying with standard specifiction.				

1	2	3	4	5	6	7	8
a	8 (Eight cubic metre only)	cum	Foundation and Basement			1 M ³ One cubic metre	
b	14 (Fourteen cubic metre only)	cum	Ground floor			1 M ³ One cubic metre	
13	23 (Twenty Three square metre only)	sqm	Brick partition walls using best quality using Country Bricks of size 8-3/4" x 4-1/4" X2-3/4" in Cement Mortar 1:3 (One Cement and Three Sand) using hoop iron reinforcement if found necessary including curing etc. complete and as directed by the departmental officers. (Hoop iron reinforcement will be measured and paid for separately)			1 M ² One square metre	
14	119 (One hundred and Nineteen square metre only)	sqm	Plastering with Cement Mortar 1:5 (One cement and Five sand), 12mm thick in all floors including curing etc. complete complying with standard specification and as directed by the departmental officers.	56&57		1 M ² One square metre	
15	30 (Thirty square metre only)	sqm	Special ceiling plastering and finishing the exposed surface of all RCC items of work such as slabs, beams, sunshades, facia, canopy slab, staircase waist slab, landing slab etc., with Cement Mortar 1:3 (One Cement and Three Sand) 10mm thick including hacking the surfaces, providing cement mortar nosing, beading for sunshades, staircases, steps, landing slabs and curing, etc., in all floors complying with standard specification and as directed by the departmental officers	56&57		1 M ² One square metre	

1	2	3	4	5	6	7	8
16	2 (Two cubic metre only)	cum	Cement Concrete 1:5:10 (One cement, Five sand and Ten hard broken stone) using 40 mm gauge hard broken jelly for flooring including laying, consolidating, finishing, rendering the top surface rough to receive the floor, curing, etc. complete complying with standard specification. (The rate is inclusive of necessary planking for panelling wherever necessary and as directed by the departmental officers	28		1 M ³ One cubic metre	
17	32 (Thirty two square meter only)	sqm	Supplying and paving the floor with design ceramic antiskid tiles of approved brand and quality (Colour/shade of the ceramic tiles shall be got approved by the departmental officers concerned) of size 200mm X 200mm x 6mm in all flooring over a base mortar 20mm hick laid in situ tructo alignment and pointed with colour cement (White cement mixed with colouring pigment) to suit the colour and shade of the ceramic tiles etc., complete complying with standard specification and as directed by the departmental officers.	39A		1 M ² One square metre	
18	59 (Fifty nine square metre only)	sqm	Dadooing walls with following best approved quality, white / colour glazed tiles of following sizes set in Cement Mortar 1:2 (One Cement and Two sand) 10mm thick and pointing the joints with white cement mixed with colouring pigments at the rate of 0.40 Kg. / sq.m. neatly in all floors, curing, etc., complying with standard specification and as directed by the departmental officers.	39 A & J		1 M ² One square metre	

1	2	3	4	5	6	7	8
19	3 (Three cubic metre only)	cum	Weathering course in brick jelly lime concrete using broken brick jelly of size 20mm uniform gauge in pure slaked lime (no sand to be used) to the proportion of brick jelly to lime being 32:12.5 by volume and laid over the RCC roof slab in a single layer of required slope and finished by beating the concrete with wooden beaters of approved pattern, keeping the surface constantly wet by sprinkling lime jaggery water, etc., complete as per standard specification and as directed by the departmental officers.	51(10-1)		1 M ³ One cubic metre	
20	32 (Thirty two square metre only)	sqm	Finishing the top of roof with one course of machine pressed tiles of size 230mm x 230mm x 20mm of approved quality set in Cement Mortar 1:3 (One Cement and Three Sand) 12mm thick mixed with water proofing compound conforming to ISS at 2% by weight of cement used and the joints pointed neatly to full depth of tiles with the same cement mortar mixed with red oxide and water proofing compound including curing etc., complete complying with standard specification and as directed by the departmental officers	44H		1 M ² One Square Metre	

1	2	3	4	5	6	7	8
21	4 (Four running metre only)	Rm	Supplying and fixing in position best approved of BIS quality PVC rain water down fall pipes having a pressure of 4 kg. / sq.cm including cost of necessary PVC shoe, PVC bend, cast iron gratings of required diameter and special clamps, brass screws, nails, etc., and fixing of cast iron gratings at junction of parapet and the RCC roof slab including finishing neatly etc., complete. The rate shall be inclusive of cast of removable cast iron grating. The PVC pipe shall be fixed in wall with special type of "U" clamp at the centre of the pipe line in addition to those for more than 3.0 metre pipe length, etc., complete complying with standard specification.	107		1 Rm One Running metre	
22	189 (One hundred eighty nine square metre only)	sqm	Supplying and painting the walls with two coats of cement paint over one coat of cement primer as instructed by the departmental officers including preparation of surface curing, etc., complete in all floors complying with standard specifications (The colour and shade of the cement paint shall be got approved by the Executive Engineer before use of work).	65A		1 M ² One Square Metre	
23	15 (Fifteen square metre only)	sqm	Supplying and fixing rigid PVC panelled door shutter made from M.S box section of size 19mmx19mm, 19gauge covered with heat moulded PVC 5mm thick and width of 50mm to form styles and rails. The panel shall be 5mm thick PVC rigid foam sheet inserted into the frame sealed to the styles and rails and 5mmx25mm PVC beading is provided on all sides with furniture fittings etc., complete.			1 M ² One Square Metre	

1	2	3	4	5	6	7	8
24	5 (Five square metre only)	sqm	.Manufacturing, supplying and fixing in positon of RCC Jali of 5cm thick in cement concrete 1:2:4 using 20mm machine crushed stone jelly (excluding cost of reinforcement steel) including cost of mould, finishing, curing, lifting, fixing in position etc., complete complying with standard specification and as directed	,		1 M ² One Square Metre	
			Pavement				
25	1 (One square metre only)	sqm	Manufacturing, supplying and fixing in position plain cement concrete precast pavement slab of size 450mm x 450mm of 50mm thick in Cement Concrete 1:2:4 (One cement, Two sand and Four jelly) using 20mm HBG stone jelly including cost of moulding charges, casting of slab, finishing, curing, fixing and pointing the slab with CM 1:3 (One Cement and Three Sand) to full depth of slab etc., complete complying with standard specification and as directed			1 M ² One Square Metre	
			Electrification arrangements				
26	17 (seventeen points only)	pts	Wiring with 2x1.5 sqmm (22/0.3) PVC insulated SC unsheathed Cu.Conductor of 1100V grade in suitable PVC rigid pipe concealed in wall and ceiling with 3mm thick hylum sheet cover with TW switch box and 5A F.T. switch and making good of the concealed portion with suitable colour light / Fan Point (For electronic regulator) (5 Point Per Coil) (SD24)	,		1 pts One points	

1	2	3	4	5	6	7	8
27	2 (Two numbers only)	Nos	Supply and fixing of 4'40 W twin street light flu. fitting complete with copper choke and condensor with 19mm dia GI pipe (Class 'B') with 1 No. 19mm GI Bend complete on the existing post / wall with 16A aerial fuse unit on MS plate with PVC unsheathed Cu. leads, with MS clarnps and aluminium painting with Flu. Tubes. (SD89)	,		1 One Number each	
28	12 (Twelve numbers only)	Nos	Supply and fixing of Fancy Glass Shade and 11W CFL for Bulk Head Point (SD80)	,		1 One Number each	
29	3 (Three numbers only)	Nos	Supply and fixing of 300 mm (12") sweep (light duty) AC exhaust fan complete with necessary wall opening and making good of the wall (SD114)	,		1 One Number each	
30	3 (Three numbers only)	Nos	Supply and fixing of louvers shutters arrangements for 300 mm (12") sweep (light duty) AC exhaust fan. (SD 120)			1 One Number each	
31	1 (One number only)	Nos	Earthing as per P.W.D standard with an earth electrode of 2 Mtr. Class 'B' GI pipe of dia not less than 32mm complete with necessary masonry work (SD 234)			1 One Number each	
			Water supply arrangements				

1	2	3	4	5	6	7	8
32	6 (six running metre)	Rm	Supplying laying and jointing UPVC pipes of super thick of approved quality and best quality conforming to ISS and with ISI mark of the following sizes including cutting threading and fixing G.I. specials but excluding cost of such specials. Fixing into Bore well / below ground level for erection of compressor motor, suction line air pipe etc., complete complying with standard specification. (25 mm dia)	,		1 Rm one running metre	
33			Supplying, laying and jointing UPVC Pipes of the following dia of approved quality and best variety above ground level including fixing of G.I Specials but excluding cost of such specials and cutting and threading of pipes but including fixing to the wall with necessary clamps and screws, Teak wood plugs making holes in the wall (or) drilling holes in the roof and making good of the disturbed portion to the original condition with necessary brick work and plastering wherever necessary with necessary scaffolding charges. etc., complete complying with standard specification.	65A			
a	30 (Thirteen running metre)	Rm	a) 25mm dia PVC Pipe			1 Rm one running metre	
b	15 (Fifeteen running metre)	Rm	b) 20mm dia PVC Pipe			1 Rm one running metre	

1	2	3	4	5	6	7	8
34			Supplying and fixing in position the following UPVC Specials of heavy type and approved quality and good variety excluding fixing charges but including necessary cutting and threading of GI pipes, jointing the GI specials and painting with two coats with good variety and best quality synthetic enamel paint over a coat of red oxide primer and jointing the specials with pipe line using shellac etc., complete complying with standard specification. (The GI specials should be got approved by the Executive Engineer concerned before use on works.)	66 & 66A			
a	6 (six numbers only)	Nos	25mm UPVC Coupling			1 one number each	
b	4 (four numbers only)	Nos	25mm UPVC Elbow			1 one number each	
c	2 (Two numbers only)	Nos	25mm UPVC Union			1 one number each	
d	2 (Two numbers only)	Nos	25mm UPVC TEE			1 one number each	

1	2	3	4	5	6	7	8
e	2 (Two numbers only)	Nos	25mm UPVC Bend			1 one number each	
f	9 (Nine numbers only)	Nos	25mm x 20mm UPVC Tee			1 one number each	
g	2 (Two numbers only)	Nos	20mm UPVC Coupling			1 one number each	
h	9 (Nine numbers only)	Nos	20mm UPVC Elbow			1 one number each	
i	3 (Three numbers only)	Nos	20mm UPVC Union			1 one number each	
j	9 (Nine numbers only)	Nos	20mm x 15mm UPVC Reducer			1 one number each	
k	9 (Nine numbers only)	Nos	15 mm Pipe Nipple			1 one number each	

1	2	3	4	5	6	7	8
35	1 (One number only)	Nos	Supplying and fixing in position first quality and approved variety of Ball Valve with BIS make of the following dia including cost of shellac, thread balls, etc., complete complying with standard specifications (for both internal and external water supply arrangements). The valves to be used on work shall be got approved by the Executive Engineer before use on work.			1 one number each	
			25 mm dia Ball Valve				
36	1 (One number only)	Nos	Supplying and fixing in position first quality and approved variety of Ball Valve Handle with BIS make of the following dia including cost of shellac, thread balls, etc., complete complying with standard specifications (for both internal and external water supply arrangements).			1 one number each	
			25 mm dia Ball Valve Handle				
37	10 (Ten numbers only)	Nos	Supplying and fixing in position 15mm dia brass CP screw down tap / Pillar tap (heavy duty) of approved make conforming to BIS specifications and quality including cost of shellac, thread, etc., complete complying with standard specification and including cutting and threading wherever necessary. (Taps should be got approved by the Executive Engineer before use on the works)	97&10 2		1 one number each	
			Internal Sanitary arrangements				

1	2	3	4	5	6	7	8
38	6 (Six numbers only)	Nos	Supplying and fixing in position best Indian make white glazed earthenware <u>Oriya type Indian water closet</u> 580mmx440mm of approved brand and best quality with P or S trap with sand cushion and after conducting necessary leakage test the portion should be filled up with brick jelly lime concrete 1:2:5 (One lime two sand and five brick jelly using 40mm size broken brick jelly) for 100mm thick encasing the water closet and top left rough to receive the floor finish and giving necessary connection to P.V.C. soil stack including dismantling masonry RCC works wherever necessary and redoing the same to the original condition without any leakage etc., complete complying with standard specification (The water closet ‘P’ or ‘S’ trap are to be got approved from the Executive Engineer before use on work). Holes should be left in walls for taking out the pipe from ‘P’ or ‘S’ trap and these should later be plugged with concrete.			1 one number each	

1	2	3	4	5	6	7	8
39	1 (one numbers only)	Nos	72a.Supplying and fixing in position white / colour glazed <u>European Water Closet</u> of best quality and approved make with 100 mm "P" or "S" trap connecting with CI pipe of 100mm dia / PVC pipe of 110mm dia, double flapped rigid PVC black seat and seat cover with CP brass hinges including cost of white cement, cement for packing, spun yarn, teak wood plugs, brass screws, etc., including supplying and fixing 10 litres capacity PVC / 12.5 litres capacity porcelin low level flushing tank with a pair of CI brackets, etc., complete with all fittings such as 15mm brass ball valve with polythene float with brass handle, union, coupling connected by means of 40mm white PVC flush hand using Indian adopter joint including all internal fittings such as 15mm brass connections, 15mm GM wheel valve, 15mm brass nipple (2 Nos.), 15mm nylon connection, TW plugs, screws and also giving necessary connection to the PVC pipe including cost of 600mm length of 110mm dia PVC pipe and painting the CI brackets with 2 coats of approved paint over one coat of red oxide primer, dismantling the masonry and re-doing the dismantled masonry to original condition etc. complete complying with standard specifications. (The EWC and flushing tank wiht all accessories should be got approved by the Executive Engineer before use on works)			1 one number each	
			a) 25mm dia uPVC Pipe				

1	2	3	4	5	6	7	8
40	1 (One number only)	Nos	Supplying and fixing position CI Nahani Trap / Floor Trap of the following sizes with best stainless steel gratings of approved brand and quality, fixed over a bed of brick jelly lime concrete 1:2:5 (One part of lime, two part of sand and five part of 40mm gauge brick jelly) and finished with Cement Mortar 1:3 (One Cement, Three sand) including dismantling masonry works wherever found necessary and making good the dismantled portions to the original condition and giving connection to the CI / PVC pipes, etc., complete complying with standard specification. (The Nahani Trap should be got approved by the Executive Engineer before use on works)	102 & 103		1 one number each	
41			Supplying and fixing in position PVC specials of the following dia and types of approved quality confirming to BIS and providing leak proof joints including fixing to the walls and giving connection to the PVC soil stacks, dismantling the masonry or RCC works and re-doing the dismantled portion to original condition etc., complete complying with standard specifications. (The PVC specials should be got approved by the Executive Engineer before use on works).				
a	8 (Eight numbers only)	Nos	a. 110mm dia Pvc door bend			1 one number each	
b	1 (One numbers only)	Nos	b.75mm dia Pvc door bend			1 one number each	

1	2	3	4	5	6	7	8
c	8 (Eight numbers only)	Nos	c.110mm dia Pvc plain bend			1 one number each	
d	1 (One numbers only)	Nos	d. 75mm dia Pvc plain bend			1 one number each	
42	9 (Nine numbers only)	Nos	Supplying and fixing approved best quality brass CP towel rail 600mm long and 20mm dia with brackets of same materials including cost of teak wood plugs and CP screws, etc., complete complying with standard specifications. (The tower rail should be got approved by Executive Engineer before use on works).	102 &103		1 one number each	
43	2 (Two numbers only)	Nos	Supplying and fixing best approved best quality brass CP soap tray of size 150 x 150mm including cost of teak wood plugs, brass screws, etc., complete complying with standard specifications. (The soap tray should be got approved by Executive Engineer before use on works).	96 & 97		1 one number each	

1	2	3	4	5	6	7	8
44			Supplying and fixing in position best quality PVC soil / waste pipes of various dia having 6 kg / sq.cm. pressure BIS mark and providing leak proof joints using PVC adhesives including fixing to the wall with special PVC / MS clamp, teak wood plugs, brass screws, etc., and making connection to all sanitary fittings, dismantling masonry / RCC works wherever found necessary and making the good dismantled portion to the original condition, including testing for any leakages, etc., complete complying with standard specifications. (The PVC pipes should be got approved by the Executive Engineer before use on works). The rate for earth work excavation will be measured and paid separately in the cases where the pipe lines are proposed to laid below ground level				
a	4 (Four running metre)	Rm	a. 110 mm PVC Soil Pipe			1 Rm one Running metre	
b	1 (One running metre)	Rm	b. 75 mm PVC Soil Pipe			1 Rm one Running metre	
					Net Total		
					Add GST 12%		
					Gross Total		
			Total Number of Items 44 - (Forty four) only				

<u>Name of Work :</u>							
CONSTRUCTION OF A NEW THIRUMANAMANDAPAM IN THE TEMPLE CAMPUS OF A/M SUGAVANESWARAR THIRUKKOIL AT SALEM ,SALEM TALUK & DISTRICT							
			Electrical works				
Sl. No.	Probable Quantity in figures and Words	unit	Description of Works	TNBP /NBC No.	Rate in figures and words	Unit in Figures and words	Amount
1	2	3	4	5	6	7	8
1	80 (Eighty Points only)	pts	Wiring with 2x1.5 sqmm (22/0.3) PVC insulated SC unsheathed Cu.Conductor of 1100V grade in suitable PVC rigid pipe concealed in wall and ceiling with PVC accessoires in flush with wall with 3mm thick hylum sheet cover with TW switch box and 5A F.T. switch with continious earth wire connction of 14SWG TC wire for making good of the concealed portion with suitable colour for PVC concealed light / Fan Point (For electronic regulator)			1 one point only	

Contractor

Assistant Commissioner,
A/m Sugavaneswarar Thirukkoil salem

1	2	3	4	5	6	7	8
2	91 (Ninety one Points only)	pts	Wiring with 2x1.5 sqmm (22/0.3) PVC insulated SC unsheathed Cu.Conductor of 1100V grade in suitable PVC rigidpipe concealed in wall and ceiling with PVC accessoires in flush with wall with 3mm thick hylum sheet cover with TW switch box and 5A F.T. switch and making good of the concealed portion with suitable colour for PVC concealed light /Fan point (for electronic regulator)(5 Points Per Coil)			1 one point only	
3	4 (Four Points only)	pts	Wiring with 2x1.5sqmm (22/0.3) PVC insulated SC unsheathed Cu.Conductor of 1100 V grade in suitable PVC rigid pipe concealed in wall and ceiling with PVC accessories, in flush with wall, with 3mm tick hylum sheet cover with TW switch box and 5 A FT switch and and making good of the concealed portion with suitable colour for concealed PVC light (6 points per coil) for rooms like bath, toilet & pumproom, etc			1 one point only	

Contractor

Assistant Commissioner,
A/m Sugavaneswarar Thirukkoil salem

1	2	3	4	5	6	7	8
4	6 (Six Points only)	pts	Wiring with 3 x 1.5sqmm(22/0.3) PVC insulated SC unsheathed Cu.Conductor of 1100V grade in suitable PVC rigid pipe concealed in wall and ceiling with PVC accessories in flush with wall with 3mm thick hylem sheet covered TWswitch box and 5A F.T. switch (Two way) and making good of the concealed portion with suitable colour for concealed staircase light point			1 one point only	
5	22 (Twenty two numbers only)	Nos	Supply and fixing of single box type 4'20 W LED fitting with TW round blocks on wall or celling with PVC unsheathed Copper leads from terminals to the fitting			1 one number each	
6	32 (Thirty two numbers only)	Nos	Supply and fixing of single box type 4'40 W LED with conduit pipe suspension from the ceiling with PVC unsheathed Copper leads from terminals to the fitting			1 one number each	
7	9 (Nine numbers only)	Nos	Supply and fixing of ORBIT LED SURFACE CEILING LIGHT (SQUARE) 12W FITTING on Celling with connetion			1 one number each	

1	2	3	4	5	6	7	8
8	2 (Two numbers only)	Nos	Supply and fixing of LED WT Bulk head fitting PRBH - 15W with connection			1 one number each	
9	11 (Eleven numbers only)	Nos	Supply and fixing of 2x2 LED Flat Pannel Fitting Havels 2x2 PLS- 42W-LED-857S with TW round blocks on wall or ceilling with PVC unsheathed Copper leadss from terminals to the fitting			1 one number each	
10	32 (Thirty two numbers only)	Nos	Supply and fixing of Havells LED Low Bay 50W Fitting with MS Clamp Set with Bolt and Nut and to be suspended with SS Chain 32 mm width with End Hooks with PVC unsheathead Copper leads from terminals to the fitting.			1 one number each	
11	4 (Four numbers only)	Nos	Supply and fixing of Havells JETAALBA - FLOOD LIGHT 70W LED Fitting with Necessary Wall Grouting clamps with Fixing bolts on ceilling with PVC unsheathed Copper leads from terminals to the fitting			1 one number each	

1	2	3	4	5	6	7	8
12	13 (Thirteen numbers only)	Nos	Supply and fixing of Havells VILUMINA S-L30WLED 757- PASYBOPC street light fitting with 32mm dia GI pipe (Class 'B') with 1 No. 32mm GI bend complete on the existing post wall with PVC unsheathed copper leads MS clamps and aluminium painting			1 one number each	
13	4 (Four numbers only)	Nos	Supply and fixing of 1200 mm (48") sweep AC ceiling fan complete with stepped electronic 300W regulator, with 300 mm down rod on existing clamp			1 one number each	
14	2 (two numbers only)	Nos	Supply and fixing of 1200 mm (48") sweep AC ceiling fan complete with stepped electronic 300W regulator, with 1 metre down rod on existing clamp			1 one number each	
15	42 (Forty two numbers only)	Nos	Supply and fixing of 1400 mm (56") sweep AC ceiling fan complete with stepped electronic 300W regulator, with 1 metre down rod on existing clamp			1 one number each	

1	2	3	4	5	6	7	8
16	2 (two numbers only)	Nos	Supply and fixing of 300 mm (12") sweep light duty AC exhaust fan complete without provision of hole in the wall			1 one number each	
17	6 (Six numbers only)	Nos	Supply and fixing of 375 mm (15") sweep heavy duty AC exhaust fan complete without provision of hole in the wall			1 one number each	
18	2 (two numbers only)	Nos	Supply and fixing of louvers shutters arrangements for 300 mm (12") sweep (light duty) AC exhaust fan			1 one number each	
19	6 (Six numbers only)	Nos	Supply and fixing of louvers shutters arrangements for 375 mm (15") sweep (light duty) AC exhaust fan			1 one number each	
20	13 (Thirteen numbers only)	Nos	Supply and fixing of 450MM 18" Almonard Walla Fan on wall with connection.			1 one number each	
21	50 (Fifty numbers only)	Nos	Supply and fixing of 5Amps (3 Pin and 2 Pin) combined flush type wall socket with 5A flush type switch concealed in suitable MS Box in flush with wall and concealed with 3mm thick hylem sheet			1 one number each	

1	2	3	4	5	6	7	8
22	9 (Nine numbers only)	Nos	Supply and fixing of 5A / 15A 3 Pin combined flush type wall socket 15A flesh type switch concealed in suitable MS Box in flush with wall wand covered with 3mm thick hylem sheet			1 one number each	
23	4 (Four numbers only)	Nos	Supply and Fixing of 25A MCB protected Socket in MS Enclosure Conceled in wall with connection			1 one number each	
24	8 (Eight numbers only)	Nos	Supply and fixing of 3 Nos. 5Amps (3 Pin and 2 Pin) combined flush type wall socket with control switches concealed in suitable TW Box in flush with wall wand covered with 3mm thick hylem sheet with earth connection (for computer plug socket)			1 one number each	
25	600 (Six hundred metres only)	Mts	Supply and run of 2 of 1.5 sqmm (22/0.3) PVC insulated SC unsheathed Cu.Conductor of 1100V grade in suitable PVC rigidpipe concealed in wall and ceiling with PVC accessoires in flush with wall and ceilling with continious earth wire connection of 14 SWG TC wire and making good of the concealed portion with suitable colour			1 one Metre only	

1	2	3	4	5	6	7	8
26	300 (Three hundred metres only)	Mts	Supply and run of 2 of 4 sqmm (56/0.3) PVC insulated SC unsheathed Cu.Conductor of 1100V grade in suitable PVC rigidpipe concealed in wall and ceiling with PVC accessoires in flush with wall and ceilling with continious earth wire connection of 14 SWG TC wire and making good of the concealed portion with suitable colour			1 one Metre only	
27	100 (One hundred metres only)	Mts	Supply and run of 4 of 10 sqmm (140/0.3) PVC insulated SC unsheathed Cu.Conductor of 1100V grade in suitable PVC rigidpipe concealed in wall and ceiling with PVC accessoires in flush with wall and ceilling with continious earth wire connection of 14 SWG TC wire and making good of the concealed portion with suitable colour			1 one Metre only	
28	25 (Twenty five metres only)	Mts	Supply and run of 4 of 16 sqmm (101/0.45) PVC insulated SC unsheathed Cu.Conductor of 1100V grade in suitable PVC rigidpipe concealed in wall and ceiling with PVC accessoires in flush with wall and ceilling with continious earth wire connection of 14 SWG TC wire and making good of the concealed portion with suitable colour			1 one Metre only	

1	2	3	4	5	6	7	8
29	20 (Twenty metres only)	Mts	Supply and laying of 4 x 10 sqmm PVC LTUG aluminium armoured cable in a trench to be excavated at a depth of 0.75 meter putting 0.15 meter layer of sand and covering the cable completely with bricks and sand and refilling the earth to make good.			1 one Metre only	
30	10 (Ten metres only)	Mts	Supply and laying of 4 x 10 sqmm PVC LTUG aluminium armoured cable on post or on wall with MS clamps			1 one Metre only	
31	2 (Two numbers only)	Nos	Supply and fixing of brass cable gland for 4 x 10 sq.mm PVC LTUG aluminium armoured cable with earth connection			1 one number each	
32	1 (one number only)	No	Supply and fixing of 32A TPN metal clad switch on suitable angle iron frame work with MS cable entry boxes with PWD earthing.(Motor)			1 one number each	

1	2	3	4	5	6	7	8
33	6 (Six numbers only)	Nos	Supply and fixing of 12 way single pole and neutral MCB sheet steel enclosure Distribution board with 1No 32 Amps DPMCB as incoming and 8 Nos 6 Amps to 32 Amps SPMCB outgoing on suitable angle iron frame work with earth connection only. The MCB DB and MCB's should be with ISI mark (Like Legrand/Hager make).			1 one number each	
34	2 (Two numbers only)	Nos	Supply and fixing of vertical type 4 way triple pole neutral MCB distribution board with Metal/Acrylic Door cover with IP42 Protection, with 63A 30mA Snsitivity RCCB and 1 No TP MCB and 9 nos 6A to 32A SP MCB as Outgoing on wall with angle iron frame work with earth connection only. The MCB DB and MCB's should be with ISI mark (like legrand make)			1 one number each	

1	2	3	4	5	6	7	8
35	1 (One number only)	No	Supply and fixing of vertical type 4 way triple pole neutral MCB distribution board with Metal/Acrylic Door cover with IP42 Protection, with 100 A 34 Pole MCB isolater as incoming and 4 Nos 63A TP MCB as outgoing on wall with Angle iron frame work with earth connection only. The MCB DB and MCB's should be with ISI mark (like legrand make)			1 one number each	
36	1 (One number only)	No	Supply and fixing of vertical type 4 way triple pole neutral MCB distribution board with Metal/Acrylic Door cover with IP42 Protection, with 63 A 4 Pole MCB isolater as incoming with and 3 Nos 32A TP MCB and 3 Nos 6 A to 32A SP MCB as outgoing on wall with Angle iron frame work with earth connection only. The MCB DB and MCB's should be with ISI mark (Mortor Load)			1 one number each	
37	1 (One number only)	No	Supply and fixing of Havells 100A on -Load Change over switch IHCNFE0100 with enclosure and one No Havells 100A Switch disconnecter Fuse panel mounted cubical Type IHKDTW4100 on suitable angle iron frame work with cable Entry boxes with earth connection.			1 one number each	

1	2	3	4	5	6	7	8
38	40 (Forty metres only)	Mts	Supply and laying of 3 1/2 x50sqmm PVC LTUG aluminium armoured cable in a trench to be excavated at a depth of 0.75 meter putting 0.15 meter layer of sand and covering the cable completely with bricks and sand and refilling the earth to make good.			1 one Metre only	
39	15 (Fifteen metres only)	Mts	Supply and clamping of 31/2 x 50 sq.mm PVC LTUG armoured cable on post or wall with MS clamps			1 one Metre only	
40	4 (Four numbers only)	Nos	Supply and fixing of brass cable gland for 31/2x50sq.mm PVC LTUG armoured cable with earth connection.			1 one number each	
41	5 (Five metres only)	Mts	Supply and clamping of 31/2 x 50 sq.mm PVC LTUG armoured cable through 65mm GI pipe on post or on wall with MS clamps.			1 one Metre only	
42	4 (Four numbers only)	Nos	Supply and providing cable end terminatonof 3-1/2x50sq.mm PVC LTUG aluminium armoured cable with necessary aluminium cable sockets by crimping etc with electrical connection complete			1 one number each	

1	2	3	4	5	6	7	8
43	4 (Four numbers only)	Nos	Earthing as per the ISI specification with an earth electrode of 2.1mt class 'B' GI pipe of dia not less than 40mm, with copper earth plate of size 125mm x 50mm x 6mm, with necessary funneling arrangements with necessary masonry work andwith 38mm RCC cover slab for the brick masonry .			1 one number each	
44	1 (one number only)	No	Supply and fixing of 3 Phase 100A aerial fuse unit for 3 Nos 100A fuse units (500V) on suitable MS sheet covered with6mm thick hylem sheet on suitable angle iron work the tapping pole with necessary clamps			1 one number each	
45	30 (Thirty metres only)	Mts	Supply and run 25mm x 3mm tinned copper flat with necessary clamps/supports on wall / floor/ ground for earth connection.			1 one Metre only	
46	1 (one number only)	No	Supply and fixing of 3 Compartment Pannel (made up of 16 SWG Sheet) with Lock and keys with view Glass arrangements forobtainingtheEBsupplyhavingBusbarChamberwith25mm x 3mm copper flat for in/out Cable connection and 3 Nos 100A Fuse unit with 1 No 100A Netural link with the provision for fixing the EB meter and cable entry boxes with necessary connection.			1 one number each	

1	2	3	4	5	6	7	8
47	1 (one number only)	No	Supply and fixing of 8 way single pole and neutral MCB sheet steel enclosure Distribution board with 1No 32 Amps DP MCB Isolator as incoming and 4 Nos, 6 Amps to 32 Amps SPMCBs outgoing on suitable angle iron frame work with earth connection only. The MCB DB and MCB's should be with ISI mark (Like Legrand/Hager make) (Street light control).			1 one number each	
48	30 (Thirty metres only)	Mts	Supply and run of 4 of 4 sq.mm (56/0.3) PVC insulated SC unsheathed Cu Conductor of 1100 V grade in suitable PVC rigid pipe concealed in wall and ceiling with continuous earth wire connection by 14 SWG TC wire and making good of the concealed portion with suitable colour			1 one Metre only	
49	12 (Twelve numbers only)	Nos	Supply and fixing of 6 metre length single Bracket Pole with Base plate (250x250x6mm) 76.10mm OD x 3.65mm thick x 6000mm Length with concreting and construction of masonry pedestal with MS box of 30cm x 20cm x 10cm with angle iron frame work with door and lock and key arrangements with supply and fixing 48W LED street light fitting with LED and with supplyandfixingof 1No.16Afuseunit(500V) and5ASPswitch inside the MS Box with PVC unsheathed leads and painting of suitable colour.			1 one number each	

1	2	3	4	5	6	7	8
50	26 (Twenty six numbers only)	Nos	Supply and fixing of brass cable gland for 2 x 10 sq.mm PVC LTUG aluminium armoured cable with earth connection			1 one number each	
51	250 (Two hundred and fifty metres only)	Mts	Supply and laying of 2 x 10 sq.mm PVC armoured LTUG cable in a trench to be excavated at a depth of 0.75 metre putting 0.15 mt. Layer of M.Sand and covering the cable completely with bricks and M.Sand and refilling the earth to make good.			1 one Metre only	
52	50 (Fifty metres only)	Mts	Supply and clamping of 2 x 10 sq.mm PVC LTUG armoured cable through 65mm GI pipe on post or on wall with MS clamps.			1 one Metre only	
53	50 (Fifty metres only)	Mts	Supply and clamping of 2 x 10 sq.mm PVC LTUG armoured cable through suitable 32 mm GI pipe on post or on wall with MS clamps.			1 one Metre only	

1	2	3	4	5	6	7	8
54	1 (One set only)	set	<p>Supply, erection,testing and commissioning of 45 KVA Diesel Silent Generator set, 0.8 PF 3 ph, 415V, 50 Hz as detailed below</p> <p>A.Engine: Water cooled Diesel Engine type suitable for generating application with a shaft output of suitable capacity of 60BHP at 1500 RPM under NTP conditions. As per the BSS 5414 / ISO 3046. The Engine shall comprise the following standard fittings (Kirloskar / Cummins / Equivalent)</p> <p>B.Alternator: Capacity for 45KVA/36Kw, 0.8PF self excited, self regulated design to run at 1500 RPM under NTP condition confirming to BS 5000 / IS 13364 (part II) 1992 to be coupled directly to the Diesel Engine and Test Certificate. (Kirloskar / Cummins / Equivalent)</p> <p>C.Battery: 1 No 12V 88/100 AH Battery Make (EXIDE / AMCO / AMARON) D.</p> <p>Acoustic Enclosure : Supply of acoustic Enclosure for 45 KVA Diesel Generator Set. The Acoustic enclosure is made of 1.6 / 2 mm thick CRCA sheets in munsel Green shade and a Structural Sheet metal base frame Painted in Black. The walls of the enclosure are insulated with fire retardant foam so as to comply with the 75 DBA at meter sound levels specified by Ministry of enforcement.</p> <ol style="list-style-type: none"> 1. Arrangement for power cable for connection. 2. Residential exhaust silencer, with flexible base arrangements. 			1 one set only	

1	2	3	4	5	6	7	8
55	3 (Three Metres only)	Mts	Supply and installation of exhaust pipe of sufficient length with suitable MS pipes so as to extend outside the generator room with necessary thermal insulation.			1 one Metre only	
56	1 (One job only)	Job	Supply of lubricating oil and first charging of starting battery and supply of 80 litres diesel to run the genset for minimum of 8 hours.			1 one job	

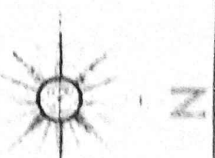
Contractor

Assistant Commissioner,
A/m Sugavaneswarar Thirukkoi salem

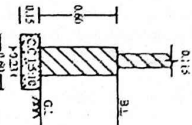
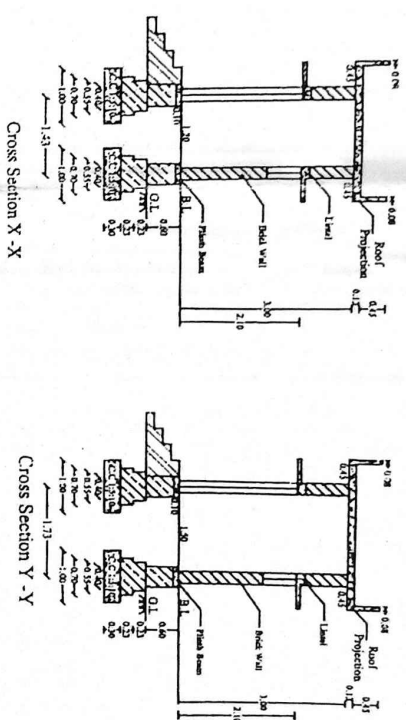
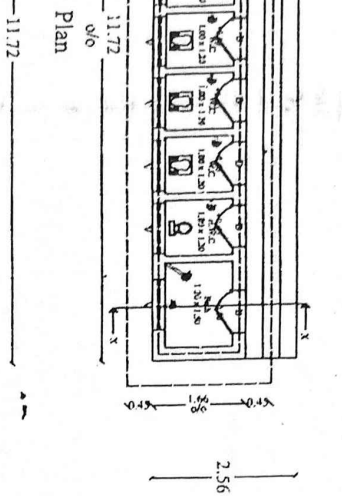
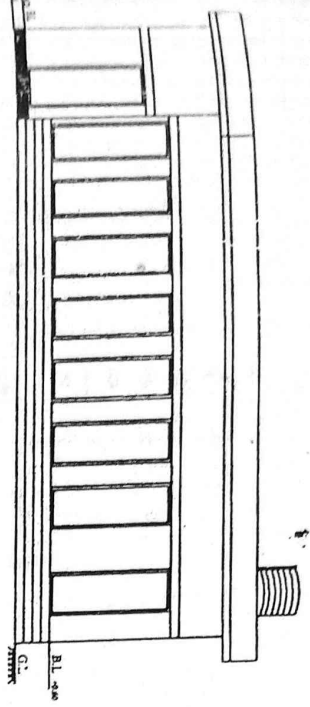
1	2	3	4	5	6	7	8
57	2 (Two numbers only)	Nos	<p>Supply, erection,testing and commissioning of 1.5 Ton (4500 K.Cal/Hr) ABS Plastic split type Air conditioner confirming to is : 1391(part 2) 1992 Amdt No.1 to 2 fitted with Rotory compressor operating Refrigerant R.22/ Non CFC suitable for wall mounting for operating on 230 volts, 50 HZ single phase AC supply with star rating of 3 as per BEE specification and capable of performing the functions of 1) Cooling 2) De humidifying 3) Air circulating 4) filtering.</p> <p>The installation works for the above split typeAC units includes the followings. Mounting/fitting in door and out door units at the respective locations.</p> <ol style="list-style-type: none"> 1. Laying Refrigerant pipe line of required length connecting both units after drilling hole/holes in the wall if required. Thickness of copper tubing shall not be less than 0.7mm. 2. Insulating the suction pipe with expanded polyethylene foam 5 mm tubing. 3. Laying 15mm dia Flexible PVC drain pipe to throw out. The condensate water being formed within Indoor unit. 4. Leakage testing the entire system with outdoor unit stand. 5. Charging Refrigerant gas in the unit. 6. Suitable electric wiring to be provided with 2.5 sqmm. PVC insulated copper wire between indoor and out door units up to 6 meters length and up to Switch within 3 			1 one number each	

1	2	3	4	5	6	7	8
58	2 (Two numbers only)	Nos	Renewal by supply and installation of 4.0 KVA Electronic Automatic voltage stabilizer V-Guard Make with input voltage Range of 170 volt to 270 volt and output voltage range 200 volts to 240 volts with High and low voltage cut off and 3 minutes time delay relay with demonstration			1 one number each	
59	2 (Two numbers only)	Nos	Supply and fixing 1000w automatic electric water heater of 25 liters capacity suitable for 230V 50c/s Ac supply on suitable MS clamps with 3 core flex wire, but without plumbing work.			1 one number each	
60	2 (Two numbers only)	Nos	Supply and fixing 5A / 15A 3 pin combined flush type wall socket with 15A flush type switch concealed in suitable MS box in flush with wall and covered with 3mm thick hylem sheet			1 one number each	
					Net Total		
					Add GST 12%		
					Gross Total		
			Total number of Items : 60 (Sixty only)				

Section of Toilet Building for proposed Thirumana Mandapom in Arulmighu Shree Krishnaswamy Thirukovil at Thovalai in Kanyakumari District of Tamilnadu



Elevation



Partition Wall for Foundation

H.R. & C.E. Department - Chennai									
Arulmighu Shree Krishna swamy Thirukovil at Thovalai									
Proposed Thirumana Mandapom									
Toilet Building at									
Taluk Thovalai									
District Kanyakumari									
Plinth Area : 10.60 sq.m									
Toilet Shelf and Stoppers									
Bath :									
Differently abled Toilet :									
Building Facing South									
All dimensions are in metre									
Scale 1:1									
Schedule of Joinery									
Sl.No	Description	Notation	Size		Sill	Top	Nos		
			Width	Height					
1	PVC Door	D	750	2100	0	2100	8		
2	PVC Door	D1	300	2100	0	2100	1		
3	RCC Jali	V	900	600	1500	2100	9		

Handwritten signature
M. V. Subramanian, B.E.
 EXECUTIVE ENGINEER, P.W.D. (R.T.O.),
 CH/RIERD ENGINEERING, H.R. & C.E. DEPT.
 TIRUNELVELY

Handwritten signature
MARAYATH SURESH
 KANYAKUMARI DISTRICT TEMPLES
 Head Office: SUCHINDRUM
 Kanyakumari District 629 704

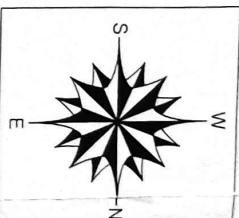
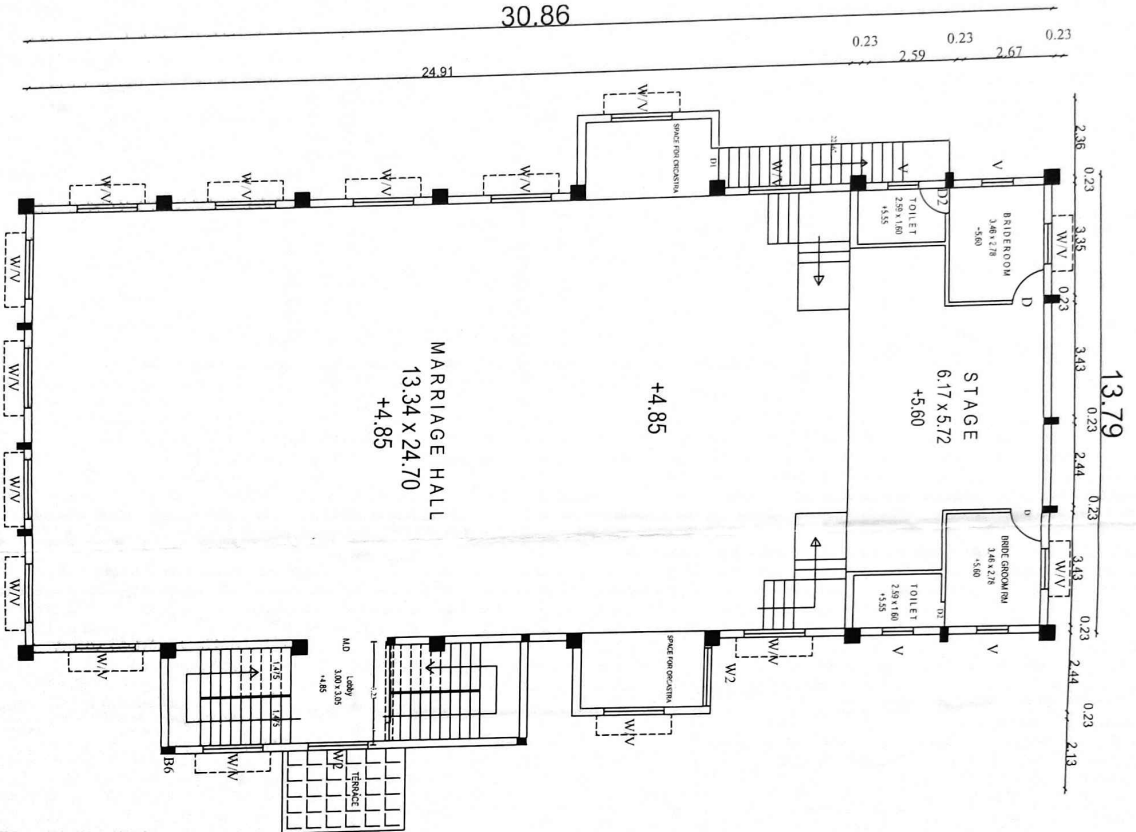
Handwritten signature
Assistant Divisional Engineer
 Kanyakumari District Temples
 Suchindrum- 629 704

Handwritten signature
EXECUTIVE ENGINEER
 HR & CE DEPT

Handwritten signature
உதவி செயற்குறிப்பாளர்
இந்து சமய அறநிலையத்துறை
சேலம்

Handwritten signature
Assistant Commissioner/Executive Officer
 Arulmighu Sugavaneshwarar Temple
 Salem-636 001.

Construction of Thirumana Mandapam for Sugavaneswarar Thirukkoil salem



0.45 x 0.45 - A5,B5,C5,E5,G5,H5,J5,L5
0.23 x 0.30 - B6,C6,D6,F6
0.45 x 0.23 - K5
0.23 x 0.23 - D5,F5,G6,H6
0.23 Dia - C7,D7

Plinth Area :

First Floor : 485.16 Sqm

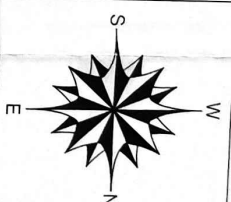
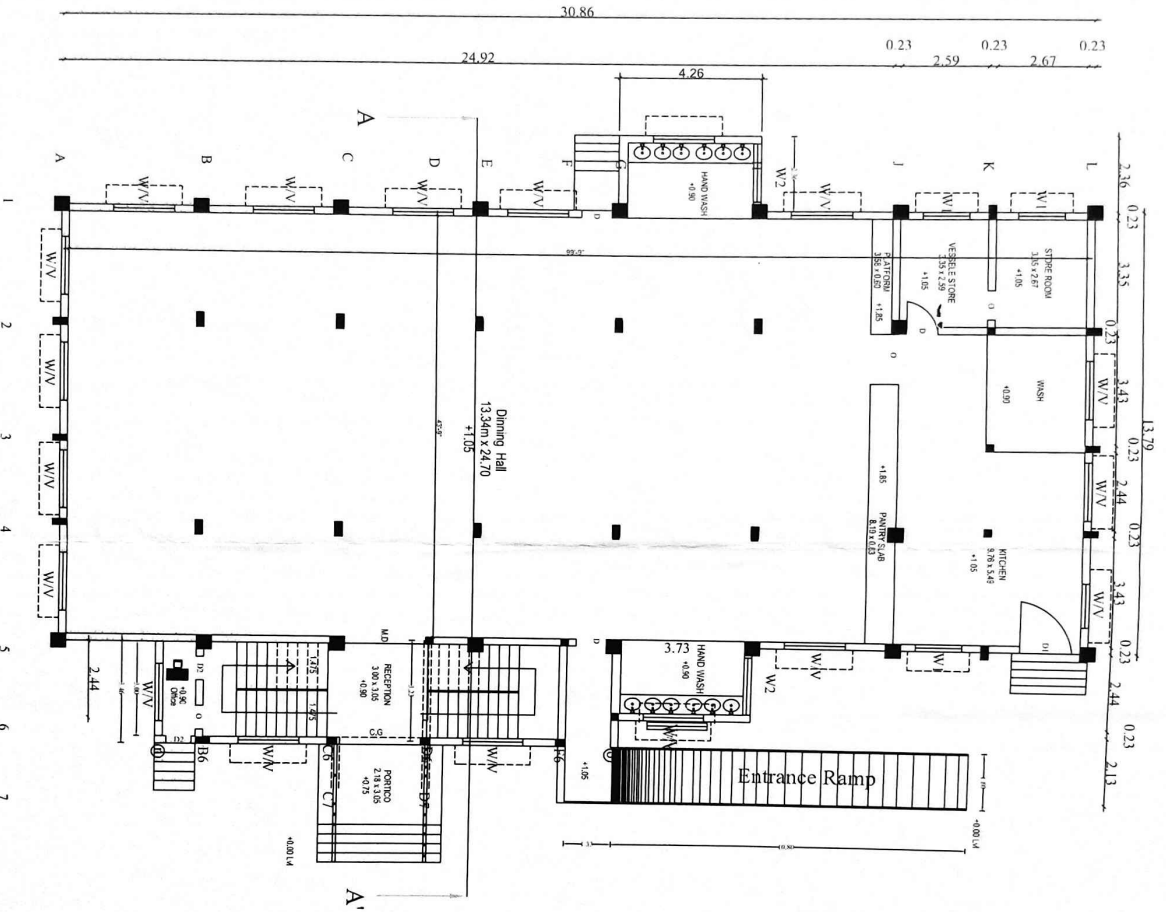
All Dimensions are in 'Meter'
Scale : 1:1

உதவி செயற்பொறியாளர்
இந்து சமய அறநிலையத்துறை
சேலம்

Assistant Commissioner/Executive Officer
Arumigu Sugavaneswarar Temple
Salem-636 001,

EXECUTIVE ENGINEER
HR & CE DEPT
SALEM

Construction of Thirumana Mandapam for Sugavaneswarar Thirukkoil salem



Plinth Area :	0.45 x 0.45 - A5,B5,C5,E5,G5,H5,J5,L5
Ground Floor : 489.09 Sqm	0.23 X 0.30 - B6,C6,D6,F6
Portico 11.61 Sqm	0.45 X 0.23 - K5
	0.23 X 0.23 - D5,F5,G6,H6
	0.23 Dia - C7,D7

All Dimensions are in "Meter"
Scale : 1:1

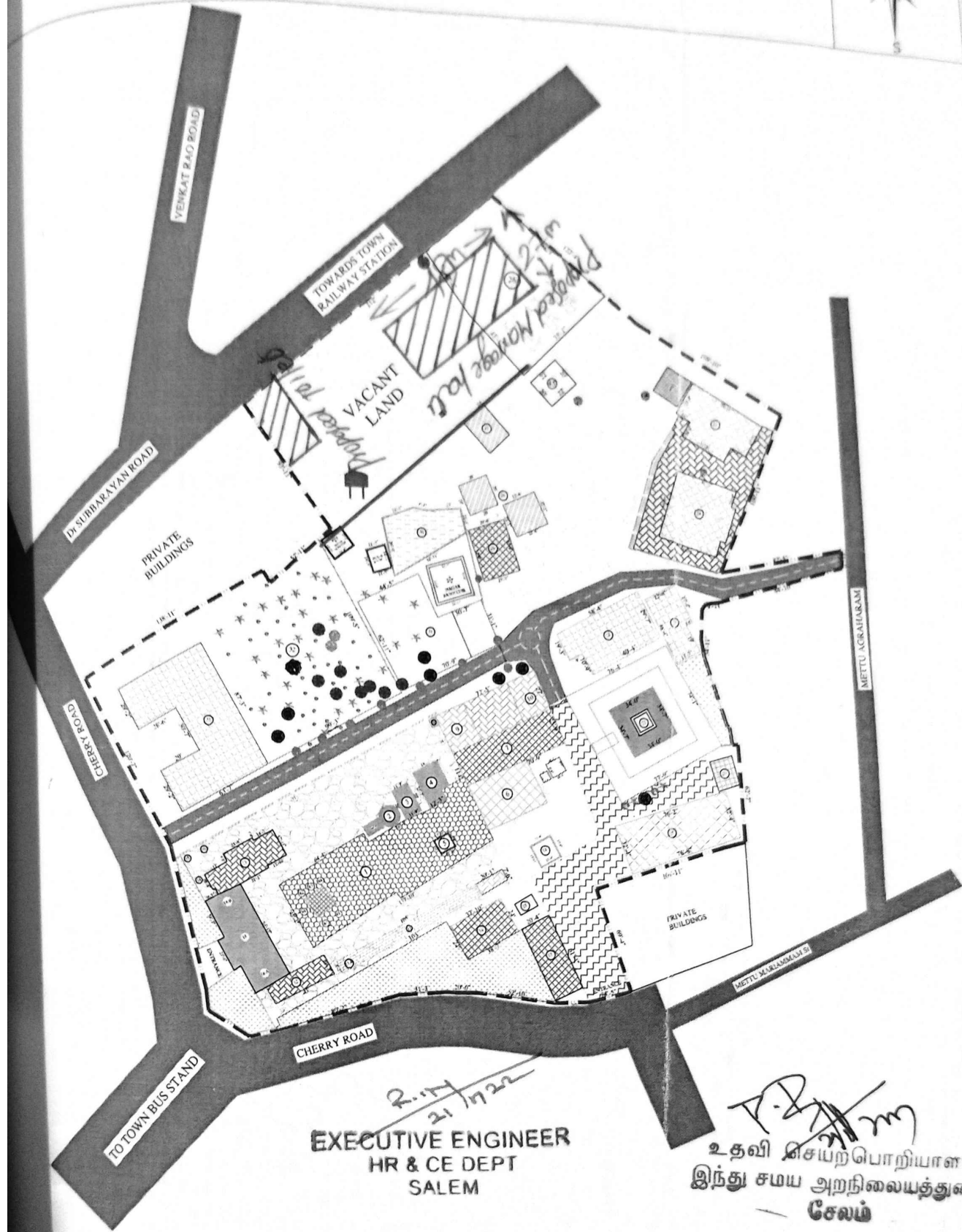
m - n - B6
F6 - o - G6

உதவி செயற்பொறியாளர்
இந்து சமய அறநிலையத்துறை
சேலம்

Assistant Commissioner/Executive Officer
Arulmigu Sugavaneswarar Temple
Salem-636 001.

EXECUTIVE ENGINEER
HR & CE DEPT
SALEM

RULMIGU SUGAVANESWARAR SWAMY THIRUKOYIL

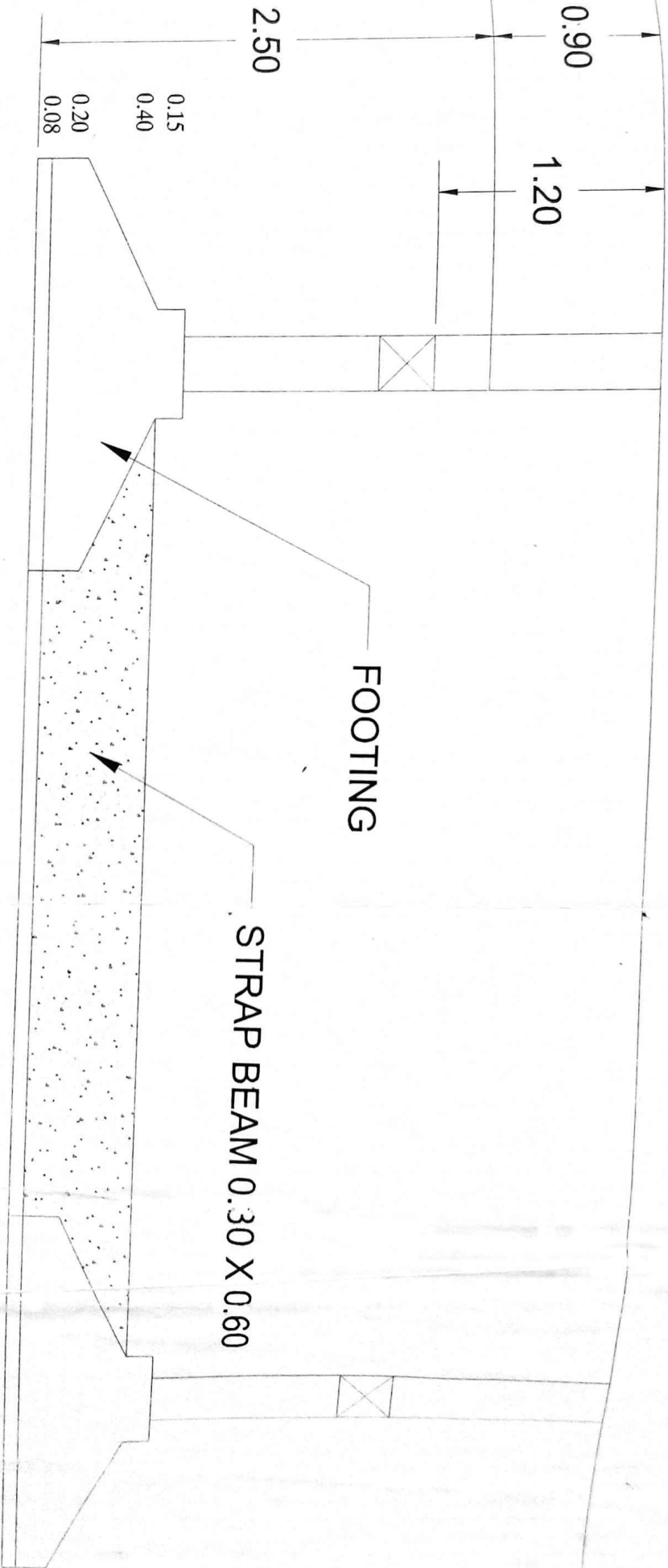


TREES
WHITE TREE = 10
= 2
= 2
TREE = 3
MARAM = 2
MARAM = 2

- | | | | |
|---|----------------------------------|-----------------------|---------------------------|
| 1. SUGAVANESWARAR SANNATHI | 12. VALAMPURI VINAYAGAR | 23. KARUNAI ILLAM | 35. SARASWATHI |
| 2. WELL | 13. MURUGAN SANNATHI | 24. STAFF QUARTERS | 36. SRI JEYSTA LAKSHMI |
| 3. THANGA RATHAM SHED | 14. NAALUKAL MANDAPAM | 25. STAFF QUARTERS | 37. SUPRA GANAPATHI |
| 4. SWARNAMBIGAI AMMAN SANNATHI | 15. ARUGAMPUL VINAYAGAR SANNATHI | 26. BUS SHED | 38. SURIYA BHAGAVAN |
| 5. RAJA GOPURAM | 16. ANNADANA MANDAPAM | 27. ELEPHANT SHED | 39. ANNAMALAYAR |
| 6. 16 KAL MANDAPAM | 17. SHOPPING COMPLEX | 28. RATHAM SHEDS | 40. THATCHAN MOORTHY |
| 7. KALYANA MANDAPAM | 18. GOBURAM | 29. VALLALAR SANNATHI | 41. NIRUPTHA GANAPATHI |
| 8. KALABAIRAVAR SANNATHI | 18.A KASI VISWANATHAR MANDAPAM | 30. WELL | 42. PREMA |
| 9. OFFICE ROOM | 18.B PANJALINGA MANDAPAM | 31. KO SAALAI | 43. SWERNA DURGA |
| 10. ASST.COMMISSIONER / EXE. OFFICER ROOM | 19. OFFICE BUILDING | 32. NANDAVANAM | 44. SANDIKESWARA SANNATHI |
| 11. NAYANMARGAL SANNATHI | 20. CLOCK ROOM | 33. SHOPPING COMPLEX | 45. EXISTING TOILET |
| 11.A SAPTHAKANNIMAR SANNATHI | 21. THIRU KULAM | 34. SARASWATHI | |
| | 22. ICON CENTER | | |

STRAP BEAM DETAILS

PROPOSED BASEMENT LEVEL



2.8/11/11

உதவி செயற்பொறியாளர்
இந்து சமய அறநிலையத்துறை
சேலம்

2.11/11/11

EXECUTIVE ENGINEER
HR & CE DEPT
SALEM

255