

TENDER CODING SHEET (RATE EXCLUSIVE OF GST TO BE FILLED UP BY THE TENDERER IN THIS CODING SHEET)					
NAME OF WORK : PROVIDING PLINTH PROTECTION FOR THE WORK OF CONSTRUCTION OF 236 NOS. OF PC/HC QUARTERS FOR TSP XII BATTALION AT SAKKARAKOTTAI VILLAGE IN RAMANATHAPURAM DISTRICT (GROUP-I) (RE-TENDER)					
<i>Item. No.</i>	<i>Description</i>	<i>Qty</i>	<i>Unit</i>	<i>Rate exclusive of GST in figures and in words</i>	<i>Amount</i>
1.5	Earth work excavation for Open foundation (excluding refilling) a. 0 to 2 mt.	67.50	1 Cum		
13.1	Filling with excavated earth	290.30	1 Cum		
238	Electrical arrangements Anticorrosive treatment for steel reinforcement rods	4.50	1 MT		
1.8.6	Annexure Providing Bored cast in situ piles of using standardized concrete mix M30 grade a) 230mm dia	335.00	1 Rmt		

<i>Item. No.</i>	<i>Description</i>	<i>Qty</i>	<i>Unit</i>	<i>Rate exclusive of GST in figures and in words</i>	<i>Amount</i>
2.1.3	Supplying and filling the Foundation and Basement with Crushed stone sand	19.60	1 Cum		
3.1.1	C.C.1:5:10 using 40mm size HBSJ for Foundation & Basement using crushed stone sand	43.02	1 Cum		
3.3.1	P.C.C. 1:8:16 using 20 mm broken brick jelly using crushed stone sand	24.00	1 Cum		
4.5.1	Standardized Concrete mix M30 Grade using crushed stone sand a. In Foundation and basement	75.80	1 Cum		

<i>Item. No.</i>	<i>Description</i>	<i>Qty</i>	<i>Unit</i>	<i>Rate exclusive of GST in figures and in words</i>	<i>Amount</i>
6.7.1	Brick work in C.M. 1:5 (F& B) using fly ash bricks of size 23x11x7cm using crushed stone sand	64.00	1 Cum		
10.7.1	Brick partition wall in C.M. 1:4 using fly ash bricks of size 23x11x7 cm 110 mm tk (B.P.) using crushed stone sand a. In Foundation and Basement	755.00	1 Sqm		
18.1	Formwork using M.S.Sheet a. For Column footings, plinth beam, Grade beam, Raftbeam, Raft slab etc.,	318.70	1 Sqm		
28.1	Floor plastering in C.M. 1:4, 20mm thick. using crushed stone sand	114.80	1 Sqm		

<i>Item. No.</i>	<i>Description</i>	<i>Qty</i>	<i>Unit</i>	<i>Rate exclusive of GST in figures and in words</i>	<i>Amount</i>
33.1	Plastering in C.M. 1:5, 12 mm tk. using crushed stone sand	1176.20	1 Sqm		
34.1	Plastering in C.M. 1:4, 12 mm tk. using crushed stone sand	745.30	1 Sqm		
43.1.1	Supplying, Fabricating and fixing of Mild steel / RTS grills (without cement slurry wash) reinforcement for all sizes of rods (Binding Wire insulated with PVC)	4.50	1 MT		
50.6.1	Precast slab 50 mm tk.in C.C.1:3:6 mixed with fibre using crushed stone sand	486.40	1 Sqm		
	TOTAL				
(Rupees					
)					

SECTION-AA

Revisions made in 10/30/2011

- The following revisions are made:
- 1.Specifications for certain items revised
 - 2.Wetting course is replaced by cool tiles
 - 3.Roof with mild slope (1:60) is provided
 - 4.The main door position is changed
 - 5.Entrance verandah for each unit is provided.
 - 6.Staircase position is changed.
 - 7.Para-sat wall height revised from 1m to 1.2m.

SCHEDULE OF JOINERY

[illegible]

SPECIFICATION

FOUNDATION	CONCRETE/BRICK
SUPERSTRUCTURE	BRICK WORK IN CM 1:1
ROOF	1:2:4 SLAB WITH GARANI PERFORMANCE AND PROTECTED WITH COOL PAINT
JOINTERY	WELD STAFF OF 10MM TO BE PROVIDED
FLOORING	WOODEN FLOOR/ R.C.FLOOR/ PVC CANNOT TILE FLOORING FOR ALL ROOMS ANTHONY CERAMIC TILE FLOORING FOR BATH & WC WITH GLAZED TILES TO THE HEIGHT OF 1.5M - GRANITE TILE

KITCHEN : GRANITE TILE
HEATH S/B
SINK : CHROME SINK
CUPBOARD S/B : BY R.C.C / CHROME
PAINTING : BRASS-DESS WITH ONE COAT OF PRIMER
OUTER-PLASTIC EMULSION PAINT
WITH ONE COAT OF PRIMER
(BRICK WORK WITH S.C.C COVER IS OK)
C.H.T

AREA STATEMENT

	SQ. M.
GROUND FLOOR AREA	121.14
FIRST FLOOR AREA	121.14
SECOND FLOOR AREA	121.14
THIRD FLOOR AREA	121.14
TOTAL AREA	484.56
AREA PER UNIT (BOLD SQ. M. (652 SF))	

NOTE


- [illegible]

PROPOSED PCMC QTRS (8 IN 1 - G+3)
SNO.
VILLAGE
TOWNSHIP
DISTRICT

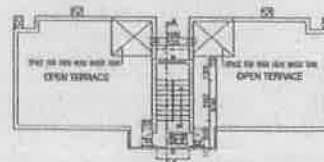
SCALE: 1:50	DRAWING NO.	REVISION NO.
DATE:	00/370R1/2015	

Ref.	Ref.	Ref.	Ref.
10.04.2015	10.04.2015	10.04.2015	10.04.2015

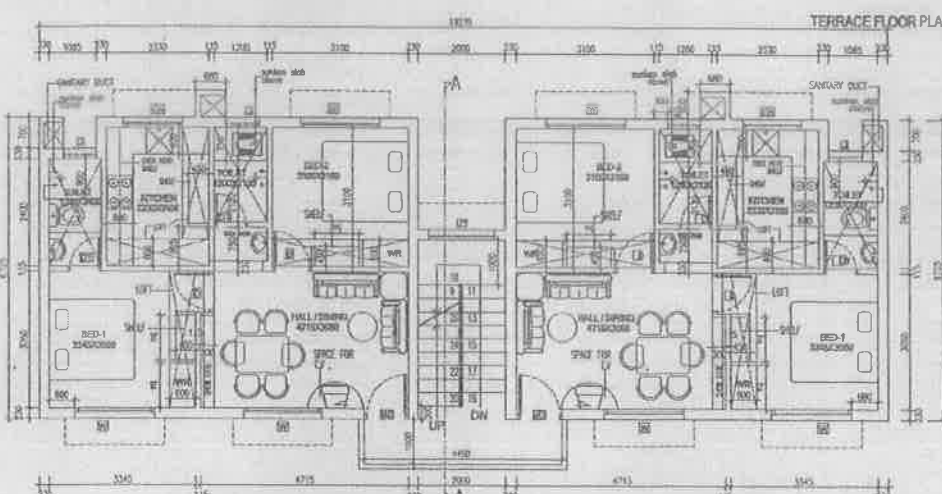
 SAT Jan 24, 2015 Subject: Engineering	SAT Jan 24, 2015 Subject: Engineering
--	--



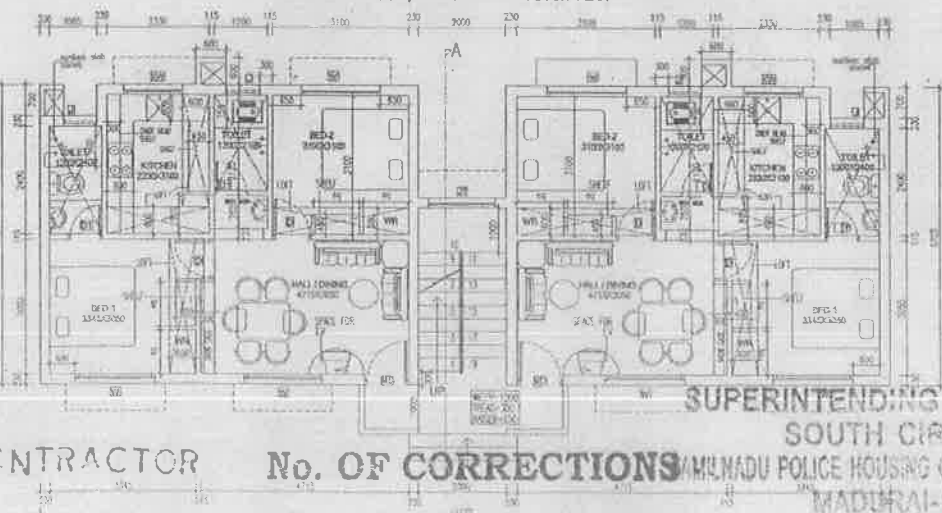
TAMILNADU POLICE HOUSING CORPORATION LTD.



TERRACE FLOOR PLAN



TYPICAL FIRST, SECOND & THIRD FLOOR PLAN



GROUND FLOOR PLAN

SUPERINTENDING ENGINEER

SOUTH CIRCLE

MAMUNADU POLICE HOUSING CORPORATION

WADSWORTH-14.

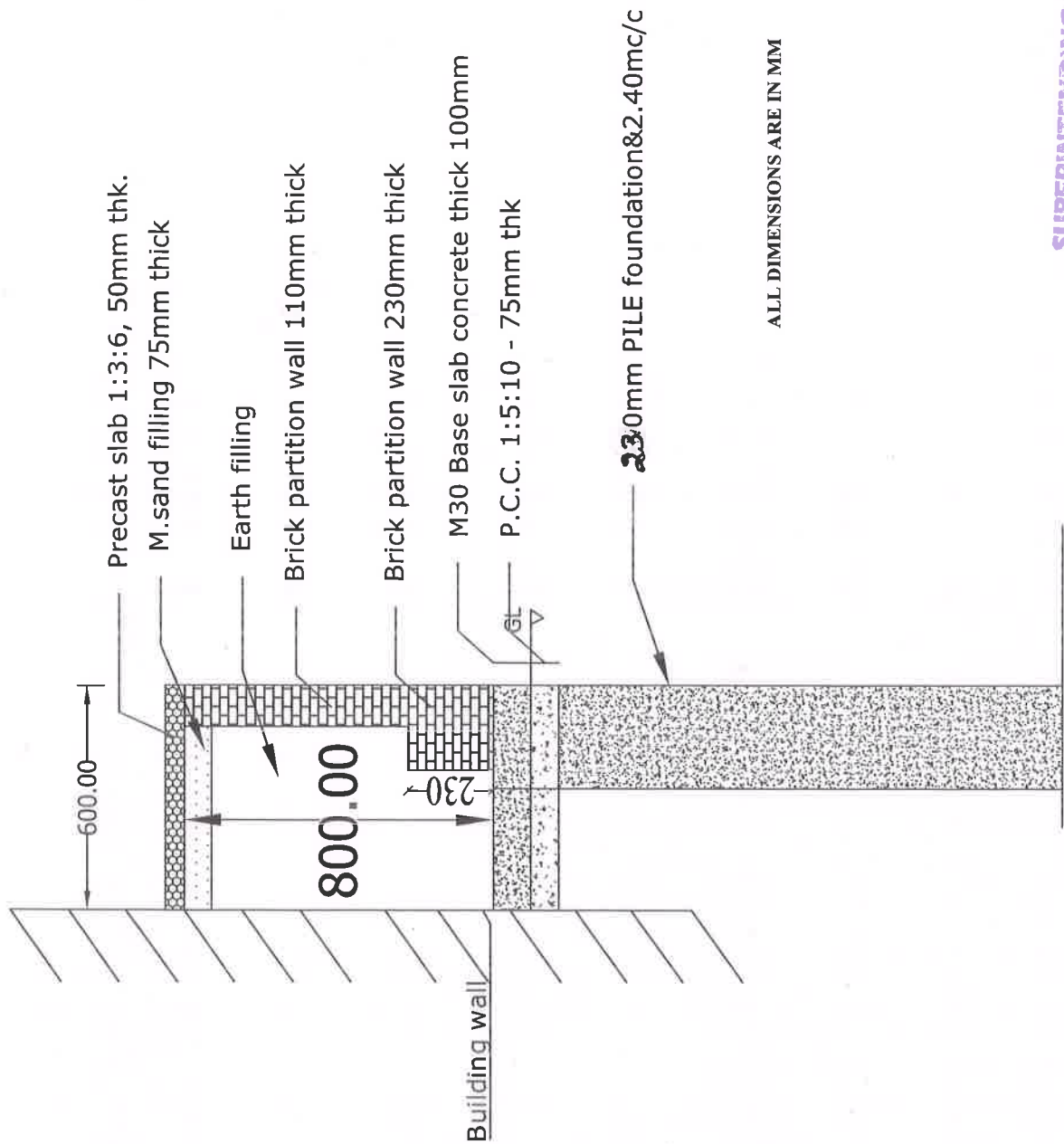
CONTRACTOR

No. OF CORRECTIONS

MAMUNADU POLICE HOUSING CORPORATION

WADSWORTH-14.

Name of Work : CONSTRUCTION OF 236NOS PC/HC QTRS FOR TSP XVI BN AT SAKKARAUKOTTAI VILLAGE IN RAMANATHAPURAM DIST. UNDER GR-1

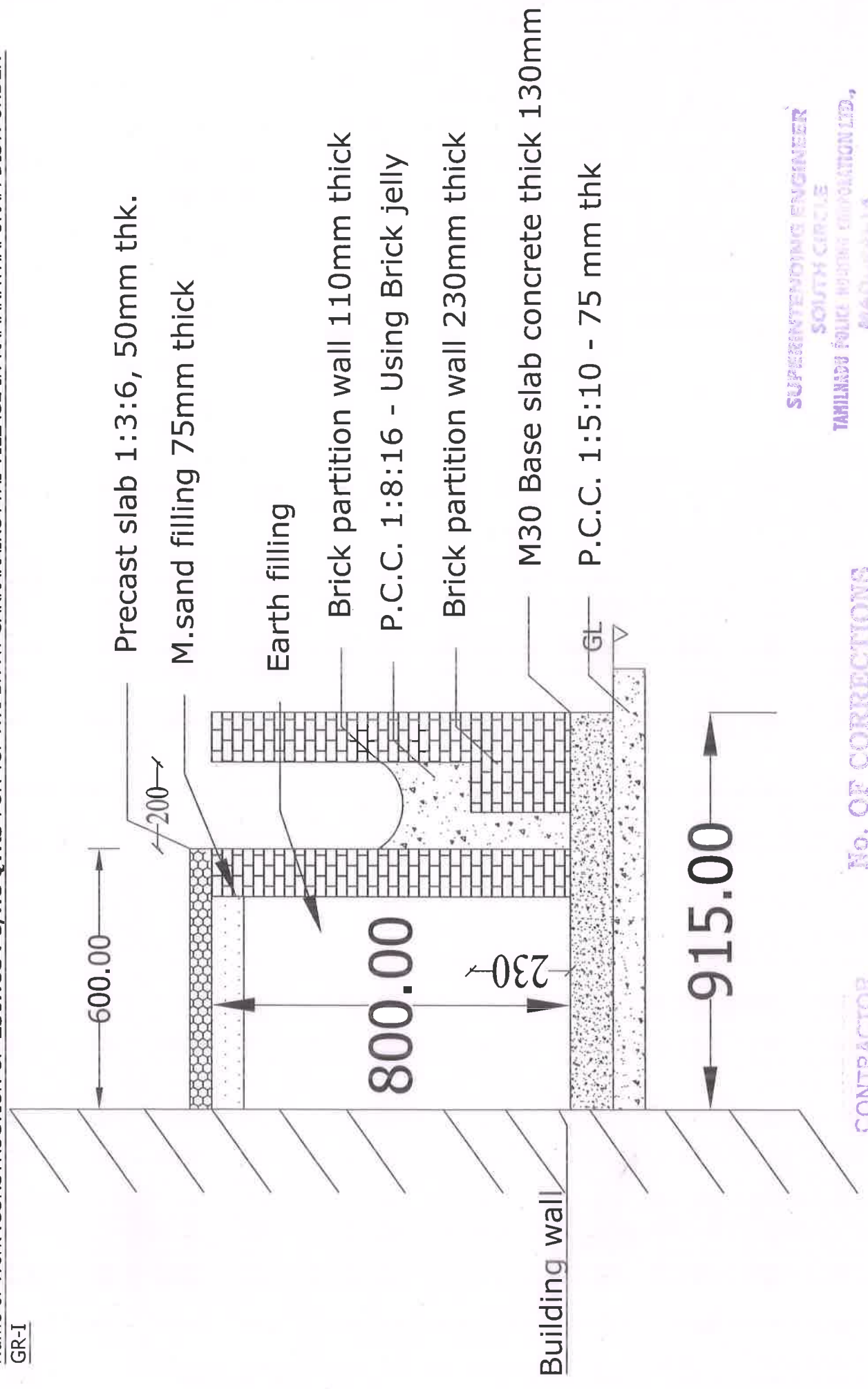


PLINTH PROTECTION
No. OF CORRECTIONS

SUPERINTENDING ENGINEER
SOUTH CIRCLE
TAMILNADU POWER CORP. LTD.,
MASSALA 14.

CONTRACTOR

Name of Work :CONSTRUCTION OF **236NOS PC/HC QTRS** FOR TSP XVI BN AT SAKKARAIKOTTAI VILLAGE IN RAMANATHAPURAM DIST. UNDER
GR-I



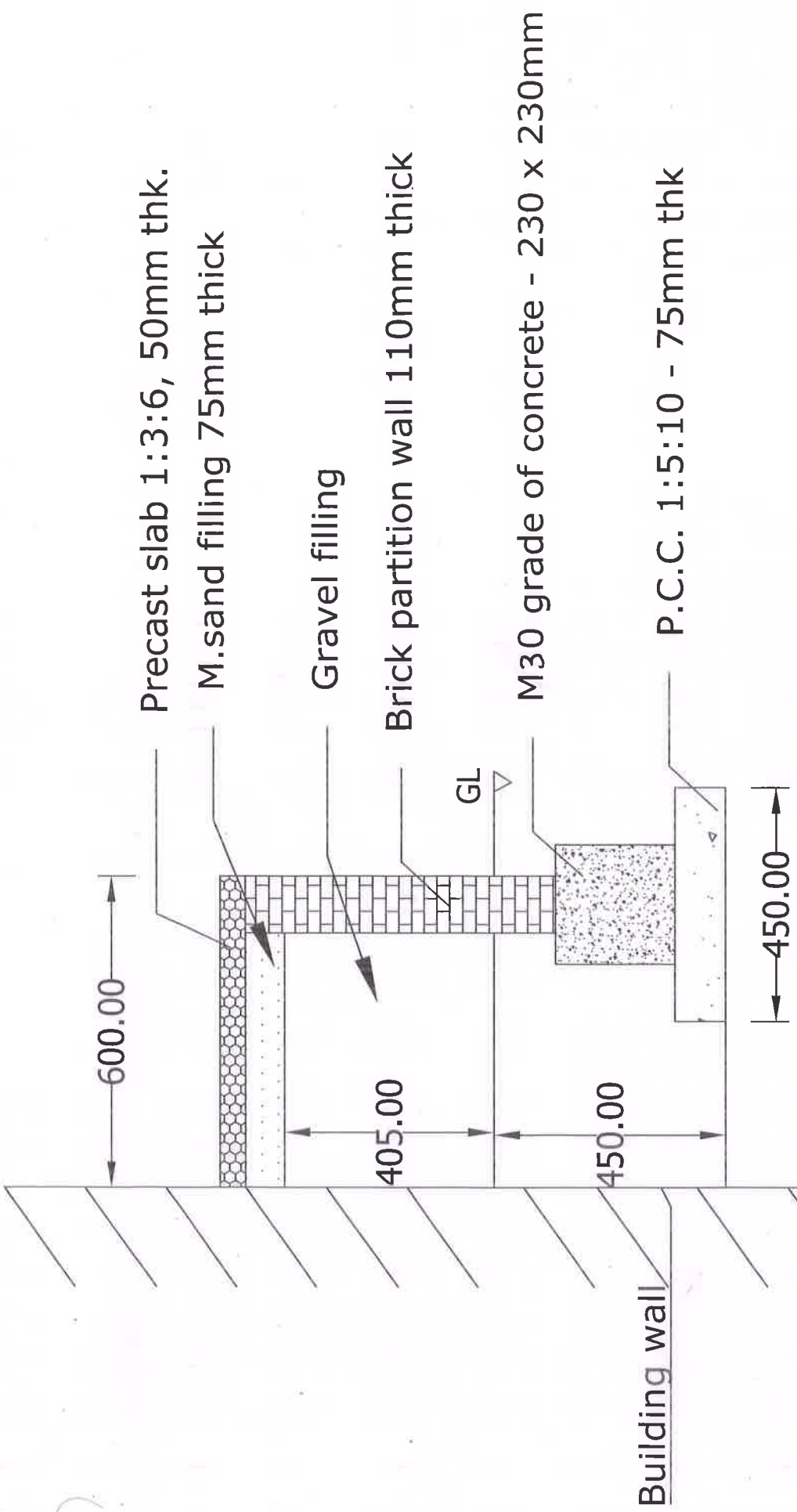
SUPERINTENDING ENGINEER
SOUTH CIRCLE
TAMILNADU POLICE INSURANCE CORPORATION LTD.,
MADURAI-14.

CONTRACTOR
No. OF CORRECTIONS

PLINTH PROTECTION & DRAINAGE

ALL DIMENSIONS ARE IN MM

Name of Work :CONSTRUCTION OF **236NOS PC/HC QTRS** FOR TSP XVI BN AT SAKKARAIKOTTAI VILLAGE IN RAMANATHAPURAM DIST. UNDER
GR-I



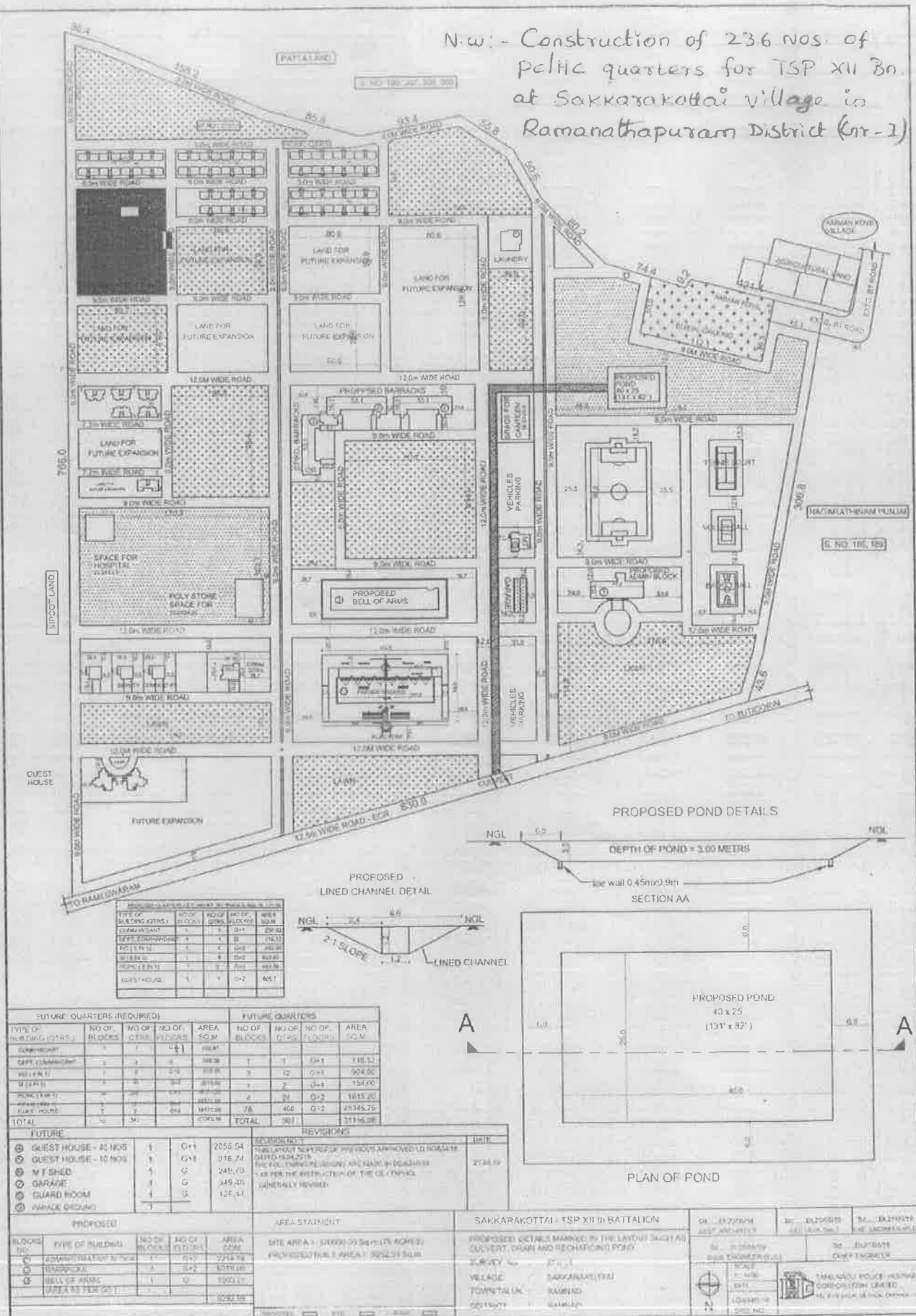
SUPERINTENDING ENGINEER
SOUTH CIRCLE
TAMILNADU PUBLIC WORKS CORPORATION LTD.,
MADURAI-14.

No. OF CORRECTIONS

CONTRACTOR

PLINTH PROTECTION

ALL DIMENSIONS ARE IN MM



**SUPERINTENDING ENGINEER
SOUTH CIRCLE
TAMILNADU POLICE HOUSING CORPORATION LTD.,
MADURAI-14.**

CONTRACTOR

No. OF CORRECTIONS