

PROPOSED ELECTRICAL WORKS FOR

**UNION BANK OF INDIA**

DIGITAL BANKING BRANCH AND e-LOBBY ATM

**TENDER SCHEDULE.**

**CONSULTANTS:**  
**FIROZ AHMED**  
**ARCHITECT**  
13-6-436/a/33, 2<sup>nd</sup> Floor, 301  
Lakshmi Apartment, Lakshmi Nagar, Pillar no.68,  
Mehndipatnam, Hyderabad - 500 028.  
Office no: 9949553386.  
Cell: 98481 49737  
E-Mail: a\_firoz @yahoo.com

**We invite quotations from empaneled vendors of regional office,Vijayawada**

**Last date for submission of Sealed Tender quotations : 23-05-2022 by 3.00pm**

**Opening of Sealed Tender quotations : 23-05-2022 by 4.00pm**

**Tender to be submitted to:**

**The Asst. General Manager,  
Union Bank of India  
REGIONAL OFFICE,  
MACHILIPATNAM.**

Issued to:

---

**TENDER SCHEDULE FOR ELECTRICAL WORKS FOR**

**UNION BANK OF INDIA**

**DIGITAL BANKING BRANCH AND e-LOBBY ATM**

Name of the Contractor to whom issued: \_\_\_\_\_

Address: \_\_\_\_\_

\_\_\_\_\_  
\_\_\_\_\_

**CONSULTANTS:**

**FIROZ AHMED**

**ARCHITECT**

**13-6-436/a/33, 2<sup>nd</sup> Floor, 301**

**Lakshmi Apartment, Lakshmi Nagar, Pillar no.68,  
Mehndipatnam, Hyderabad - 500 028.**

**Office no: 9949553386.**

**Cell: 98481 49737**

**E-Mail: a\_firoz @yahoo.com**

**CLIENTS:**

**The Asst. General Manager,  
Union Bank of India  
REGIONAL OFFICE,  
MACHILIPATNAM.**

## **TENDER NOTICE**

Sealed Tender on item rate basis are invited from competent ELECTRICAL Paneled contractors having sound technical and financial capacity for ELECTRICAL works for  
UNION BANK OF INDIA - BRANCHs,

1. Estimated cost of work -----Rs 3.54 lakhs (Excluding GST)
2. Time of Completion -----21 days

**Submission and opening of the tender at, The AGM,  
UNION BANK OF INDIA, REGIONAL OFFICE, MACHILIPATNAM.**

The consultants / clients will not be bound to accept the lowest tender and reserves right to accept or reject any or all the tenders without assigning any reason whatsoever.

### **FIROZ AHMED**

ARCHITECT

H.No:13-6-436/A/33,

Lakshmi Apartment,

2<sup>nd</sup> Floor, 301, Lakshmi nagar,

Pillar no.68, Mehidipatnam

Hyderabad – 500 028.

Cell: 98481 49737

Office no:9949553386.

E-Mail: a\_firoz @yahoo.com

Date:

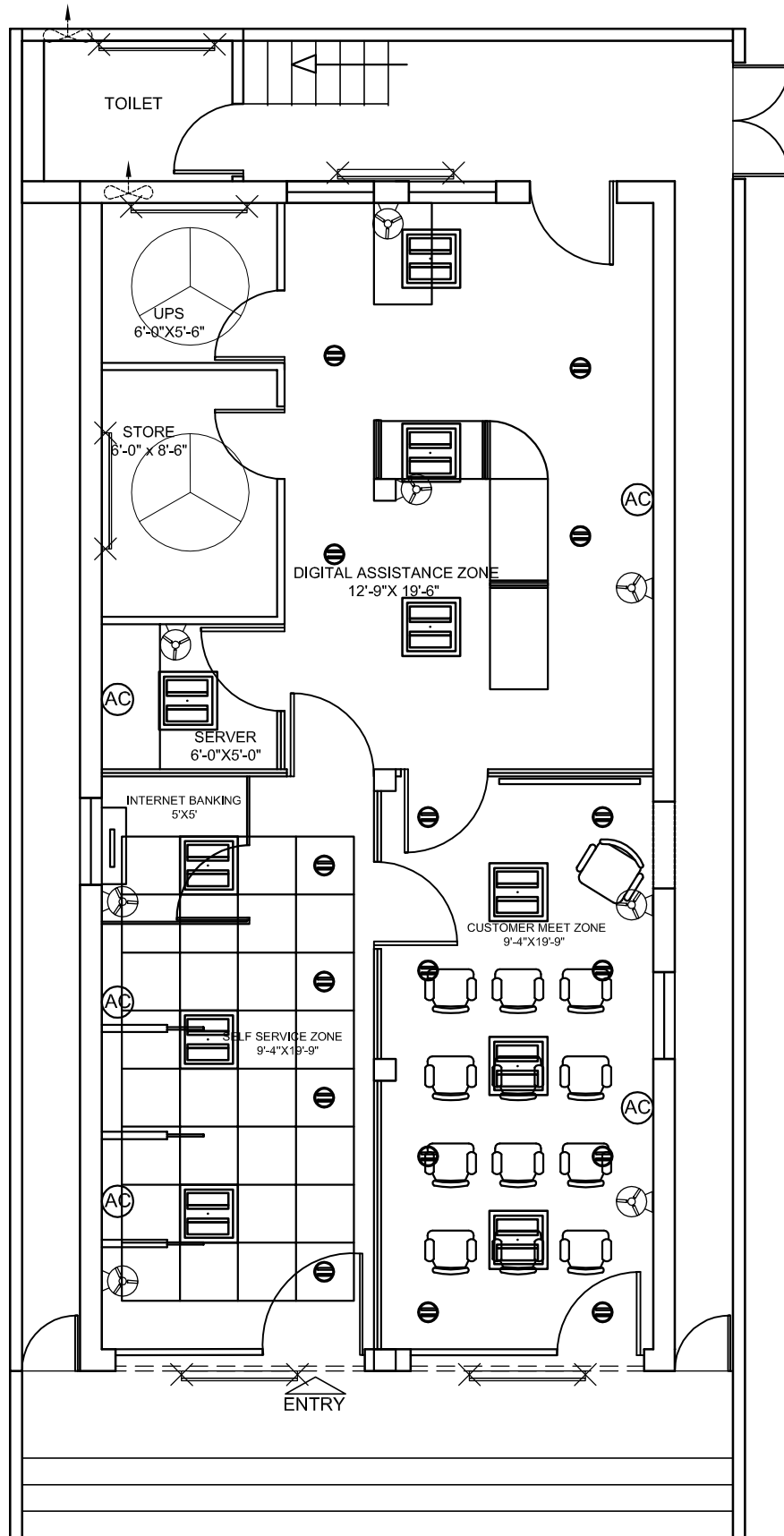
**PROPOSED ELECTRICAL WORKS FOR  
UNION BANK OF INDIA.**

**LIST OF APPROVED MANUFACTURERS / NATURAL SOURCES OF MATERIALS TO BE USED IN  
THE ELECTRICAL WORKS SUBJECT TO THE APPROVAL OF SAMPLES BY THE CONSULTANT.**

| <b><u>S.No.</u></b> | <b><u>Material Name.</u></b>          | <b><u>Brand / Manufacturer / Recommended Make.</u></b> |
|---------------------|---------------------------------------|--|
| 1.                  | Switches/Sockets                      | MDS (Mosaic) / MK India / Anchor Woods / Clipsal.      |
| 2.                  | Copper Conductor wires                | Finolex / Qflex/ Lapp/ Anchor                          |
| 3.                  | PVC conduits & Accessories            | Precision / Sudhakar/ Avon plast                       |
| 4.                  | MS Conduits                           | Gupta / Bharat   |
| 5.                  | Metal clad Sockets                    | MDS /L&T- Hager /Merlengerin /BCH                      |
| 6.                  | MCBs /MCB Distribution boards         | MDS /L&T- Hager /Merlengerin(Compact)                  |
| 7.                  | MCCBs/Switchgear                      | GE Power /Merlin Gerin(Compact) /BCH /L&T /MD          |
| 8.                  | Under ground Cables                   | CCI /Unistar /Nicco /Gloster                           |
| 9.                  | Cable Glands                          | HMI /Comet   |
| 10.                 | Capacitor Bank                        | Epcos /Neptune   |
| 11.                 | Cable Lugs                            | Dowell's / 3D  |
| 12.                 | MV Panels (PCCs)                      | Manufacturers with CPRI Test Certificate.              |
| 13.                 | ELRs/CBCT                             | Prokdvs /Nagoba  |
| 14.                 | Measuring Instruments                 | Prokdvs /Enercon                                       |
| 15.                 | Selector Switches                     | Vaishno / Salzer / Kaycee                              |
| 16.                 | Indication Lamps LED (protected type) | Schneider / Vaishno / Binay                            |
| 17.                 | Resign cast CTs                       | AE / Kappa   |
| 18.                 | Telephone Wires                       | Lapp / Delton /National                                |
| 19.                 | Light Fixtures                        | Philips / Tulip / GE                                   |
| 20.                 | Ceiling Fans & Exhaust Fans           | Crompton / Bajaj                                       |

**NOTE :** The contractor shall use only above mentioned material or equivalent make to be approved by the Consultant. All other materials shall confirm to the specifications laid down. The tenderer shall take this into account while tendering rates / prices. The Consultant / Owner has got every right to select any of the above Makes for the Project. However the samples of every material including all fixing accessories shall be got approved by Owner / Consultant before Execution.

## **DRAWINGS and BILL OF QUANTITIES**



CARPET AREA: 781. Sft

| NOTE :   | PROJECT:   | TITLE:                                  | NORTH | REFERENCE   | ARCHITECT:   |
|--|--|---|-------|---|--|
| <p>1. THIS DRAWINGS IS THE PROPERTY OF THE ARCHITECT AND SHALL NOT BE COPIED WITHOUT HIS PERMISSION.</p> <p>2. DISCREPANCIES FOUND IN THE DRAWING SHALL BE BROUGHT TO THE ARCHITECT'S NOTICE IMMEDIATELY.</p> <p>3. DRAWINGS SHALL BE READ AND SHOULD NOT BE SCALED.</p> | <p>PROPOSED INTERIOR WORK FOR</p> <p><b>DIGITAL BANKING UNIT</b></p> <p>MACHILIPATNAM BRANCH</p> | <p>ELECTRICAL PLAN</p> <p>OPTION-05</p> |       | <p>DESIGNED BY: FA</p> <p>DRAWN BY: FIRDOUS</p> <p>CHD BY: FA</p> <p>SCALE: N T S</p> <p>DATE: 16-05-2022</p> | <p><b>FIROZ AHMED</b></p> <p>H.NO 13-6-436/A/33,</p> <p>LAKSHMI APARTMENTS,</p> <p>2nd FLOOR, 301, LAKSHMI NAGAR</p> <p>PILLAR NO.68, MEHIDIPATNAM,</p> <p>HYDERABAD-028,</p> <p>CELL: 98481 49737</p> |

| S.NO                             | DESCRIPTION  | UNIT | QTY | Rate (Rs) | Amount(Rs) |
|----------------------------------|--|------|-----|-----------|------------|
| <b>INTERNAL ELECTRICAL WORKS</b> |  |      |     |           |            |
| <b>E - 1</b>                     | <b>Lights Points(Including Circuit Wiring 2x2.5+1.5 Sqmm)</b>  |      |     |           |            |
|                                  | Point Wiring for Light/ Fan/ Exhaust fan with 2runs of 650V grade 1.5 Sq.mm FRLS PVC & 1 run of 1.5 Sq.mm PVC insulated Copper wires , run in 25 mm dia heavy gauge PVC conduits concealed in wall / ceiling conforming to IS including all accessories such as junction boxes, conduit bends elbows and ceiling rose, anodised GI Switch box with modular switch and the box covered with front plate.( Point Wiring Include Circuit Wiring From Main Db to SWitch Board with 2x2.5 +1.5 Sqmm Copper fluxible wire etc)                       |      |     |           |            |
| <b>a</b>                         | One Light point controlled by one 6A switch.   | Nos  | 22  |           |            |
| <b>b</b>                         | Two Lights point controlled by one 6A switch.  | Nos  | 5   |           |            |
| <b>c</b>                         | Exhaust fan point controlled by one switch.  | Nos  | 2   |           |            |
| <b>d</b>                         | Ceiling fan point controlled by one switch & Electronic Step type Regulator and Concealed MS fan hook box.   | Nos  | 2   |           |            |
| <b>e</b>                         | Supply and fixing of 6A, 3Pin Socket outlet switches of 6A rating boards for Wall Mounting Fans  |      |     |           |            |
| <b>i</b>                         | Independent points   | Nos  | 8   |           |            |
| <b>ii</b>                        | Dependent points   | Nos  | 8   |           |            |
| <b>f</b>                         | Inverter points  | Nos  | 10  |           |            |
| <b>E - 2</b>                     | Supply and Wiring with the following size 650V grade FR PVC insulated Copper conductor wires in suitable <b>PVC conduit</b> including end terminations with suitable lugs.   |      |     |           |            |
|                                  | a)Supply and wiring of UPS Points wiring from UPS Room DB to Individual Work Stations With required all Connections and Suitable PVC Conduites. 2runs of 2.5Sq.mm PVC wires with 1run of 1.5 Sq.mm PVC Conduite for UPS out going Wirings  | Rmt  | 38  |           |            |
|                                  | b) 2runs of 6Sq.mm PVC wires with 1run of 2.5 Sq.mm PVC Conduite   | Rmt  | 18  |           |            |
|                                  | e) 2runs of 4.0 Sq.mm PVC wires with 1run of 1.5 Sq.mm PVC wire for Name board from the 10 A DP MCB on the main board  | LS   | 1   |           |            |
| <b>E - 3</b>                     | <b>Light / Fan Fixtures</b>  |      |     |           |            |
|                                  | Supply and Installation of following type Fluorescent/ Compact fluorescent/ Incandescent light fixtures on wall/ Ceiling including all fixing accesssories such as leads,Teak wood round block etc complete as required. The Fluorescent/CFL fixtures shall be complete with Low loss copper ballast PF improvement capacitor, Bipin Rotor type lamp holder,starter, starter base, all prewired upto the terminal block. All fixtures shall be supplied with lamps. The Catalogue Numbers refers to Philips Make or equivalent approved make . |      |     |           |            |
|                                  | a) Recess mounted <b>LED Luminaire</b> 36 x 1W Class LED, Wipro make code: LM - 036 - XXX - WH - XX.   |      |     |           |            |
|                                  | Supply   | Nos  | 10  |           |            |
|                                  | Erection   | Nos  | 10  |           |            |
|                                  | Frame  | Nos  | 7   |           |            |

| S.NO         | DESCRIPTION   | UNIT | QTY | Rate (Rs) | Amount(Rs) |
|--------------|---|------|-----|-----------|------------|
|              | b) Recess mounted <b>LED Down lighter</b> with Pressure die cast aluminium housing (10 x 1W), Wipro make code: LD 49 - 900 - XXX - 60 - XX.   |      |     |           |            |
|              | Supply  | Nos  | 16  |           |            |
|              | Erection  | Nos  | 16  |           |            |
|              | c)20W <b>LED Tube light</b> fixture Wall/ Ceiling mounted (Philips Make TMS 200/140)  |      |     |           |            |
|              | Supply  | Nos  | 6   |           |            |
|              | Erection  | Nos  | 6   |           |            |
| <b>E - 4</b> | <b>Ceiling Fans</b>   |      |     |           |            |
|              | Supply & Fixing of 1200 mm sweep Crompton Make High Speed Ceiling fan with standard down rod, all accessories Electrical connections. Including fixing materials required.  |      |     |           |            |
|              | Supply  | Nos  | 2   |           |            |
|              | Erection  | Nos  | 2   |           |            |
| <b>E - 5</b> | <b>Wall Mounted Fans</b>  |      |     |           |            |
|              | Supply & Fixing of 400 mm sweep Wall mounted fan with 3 pin Plug on the lead wire of each fan all accessories Electrical connections. Including fixing materials required.  |      |     |           |            |
|              | Supply  | Nos  | 10  |           |            |
|              | Erection  | Nos  | 10  |           |            |
| <b>E - 6</b> | <b>Exhaust Fans</b>   |      |     |           |            |
|              | Supply and Installation of heavy duty Exhaust fans with Metallic blades following size sweep with gravity louvres shutters Exhaust fans with Metallic blades of following   |      |     |           |            |
|              | a) 300mm Sweep(Crompton make Tracent Model)   |      |     |           |            |
|              | Supply  | Nos  | 2   |           |            |
|              | Erection  | Nos  | 2   |           |            |
| <b>E - 7</b> | <b>MAIN DBS / SUB DBS</b>   |      |     |           |            |
|              | Supply Installation Testing and commissioning of TPN MCB Double door Distribution boards dust and vermin protected and rated for 415V, Three Phase AC supply operation including incoming MCB/ELCB as per specifications and required capacity Neutral bar and Earth terminal complete as required and installed in flush with wall including all fixing materials required. MCBs shall conform : 8828 and ELCB /RCCB shall confirm to IS : 12640 |      |     |           |            |
|              | a)Supply, installation, testing and commissioning of (Double door) with<br>8Way VTPN MCCB DPX DB with 100A 4Pole MCCB as incomer and 63A TPMCBs -2 Nos, 32A TP MCBs-2 Nos, and 12 nos10/32A SPMCBs s outgoing. (for MAIN DB)  | Nos  | 1   |           |            |
|              | b)Supply, installation, testing and commissioning of (Double door) with<br>4Way TPN MCB DB with 63A 4Pole MCB as incomer and 12 nos10A SPMCBs s outgoing. (for LDB)   | Nos  | 1   |           |            |
|              | c)Supply, installation, testing and commissioning of 8way SPN MCB DB (Double door) with 32A DP MCB as incomer and 6nos. 6A/10A/16A SPMCBs as outgoing.(UPS DB)  | Nos. | 1   |           |            |
|              | d)Supply and fixing of 32 A, DP MCB-1No. with encloser for UPS Incoming.  | Nos  | 1   |           |            |
|              | e)Supply and fixing of 63A 4 Pole Change over Switch for LDB/UPS Connections with encloser for UPS Incoming.  | Nos  |     |           |            |



| S.NO          | DESCRIPTION  | UNIT | QTY | Rate (Rs) | Amount(Rs) |
|---------------|--|------|-----|-----------|------------|
| <b>E - 8</b>  | <b>Raw power Wiring and Sockets:</b> Supply and wiring of Raw Power Points from Main DB to Individual Work Stations With required all Connections with 2runs of 2.5Sq.mm PVC wires with 1run of 1.5 Sq.mm PVC Conduite for UPS out going Wirings and also SA Supply and fixing of 1 <b>Nos 6A</b> sockets with 1 <b>Nos 6A switch</b> of modular type with 'front plate and anodised GI box complete 'as required'.for UPS Sockets   | Nos  | 8   |           |            |
| <b>E -9</b>   | Supply and fixing of 1no 16A 3pin 'socketswith 16A switch of modular type with 'front plate and anodised GI box complete 'as required'.(Raw Power )  | Nos  | 2   |           |            |
| <b>E - 10</b> | <b>UPS Wiring and Sockets:</b> Supply and wiring of UPS Points from UPS Room DB to Individual Work Stations With required all Connections with 2runs of 2.5Sq.mm PVC wires with 1run of 1.5 Sq.mm PVC Conduite for UPS out going Wirings and also SA Supply and fixing of 3 <b>Nos 6A</b> sockets with 2 <b>Nos 6A switch</b> of modular type with 'front plate and anodised GI box complete 'as required'.for UPS Sockets. (UPS -1 conection table / counter no.1,3,5 & 7 and UPS -2 table no. 2,4,6 & 8 etc, and network rack & manager 2 UPS points from UPS-1 & UPS-2.   | Nos  | 14  |           |            |
| <b>E - 11</b> | Supply and fixing of 3 Nos 16A sockets with 1 Nos 16A switch of modular type with 'front plate and anodised GI box complete 'as required'.for UPS Sockets  | Nos  | 2   |           |            |
| <b>E -12</b>  | Supply installation testing and commissioning of AC Units With 2x4Sqmm+2.5Sqmm Copper Fluxible Wire From Main DB to AC Units including Legrand Make 20A Metal Clad Socket with 25/32A SP MCB set( Like Metal Clad Socket+Wiring From Db to AC Box to Stabilizer to AC Units)   | No   | 5   |           |            |
| <b>E - 13</b> | Supply and erecting of approved make telephone RJ 11Jack for telephone with 2 pair .5mm Thick Telephone cable including pvc conduite with required all materials (RJ-11 Jack+ 2 pair Cable)  | Nos  | 6   |           |            |
| <b>E - 14</b> | Supply and Laying of 10 pair .5mm Thick Telephone cable including pvc conduite with required all materials From Outside to Rack locations  | Nos  | 1   |           |            |
| <b>E - 15</b> | Supply and fixing of 20pair Crone Connector box with 20 Poir connectors and required all connections.  | Nos  | 1   |           |            |
| <b>E -16</b>  | <b>MV Cables</b><br>Supply, laying and commissioning of following size 1.1KVgrade PVC insulated armoured aluminium conductor underground cable, in built up cable trench/ 2" PVC pipe or on cable tray with all installation materials.When the cable is to be laid in ground, the same shall be laid at a depth of 750mm below ground level including excavation and refilling of earth after cables are laid,providing protection with sand and bricks at sides and topand cable route markers at 'every 15mtr. interval and also atthe turnings. The cable shall conform to IS 1554/ Part I.Cable protected in 2" Dia G.I Pipe10' long at the pole (correct measurement should be taken by the contractor before procuring the cable. |      |     |           |            |
|               | a) 3.5C X 50 Sq.mm   | Rmt  | 56  |           |            |

| S.NO   | DESCRIPTION  | UNIT | QTY | Rate (Rs) | Amount(Rs) |
|--|--|------|-----|-----------|------------|
| <b>E-17</b>  | Providing Indoor ordinary end terminations for the cable specified above with compression type steel gland, Bi-metallic lugs using crimping tool, Insulation tape, Identification tags etc., including end termination and Earthing of Gland with 8SWG 'GI Wire  |      |     |           |            |
|  | a) 3.5C X 50 Sq.mm   | No   | 2   |           |            |
| <b>E -18</b>   | <b>Earthing</b>  |      |     |           |            |
|  | a) Providing G.I. Earth station, with 40mm dia 2500mm long GI pipe including construction of brick pedestal, providing meshed funnel, CI cover and other civil Engineering works, spreading a homogenous mixture of salt, charcoal around the pipe etc, completely as per IS 3043, 1987 or latest revision.                  | No   | 1   |           |            |
|  | b) Providing Copper Earth station, with 600X600X3.15mm Copper plate at 2500mm depth including construction of brick pedestal, providing meshed funnel, CI cover and other civil Engineering works, spreading a homogenous mixture of salt, charcoal around the pipe etc, completely as per IS 3043, 1987 or latest revision. | No   | 1   |           |            |
|  | c) Supply and laying of following size strips including including all necessary inter connections with earth station and equipments.   |      |     |           |            |
|  | i) 8 SWG Copper wire   | Rmt  | 45  |           |            |
| <b>19</b>  | <b>LAN Cable</b>   |      |     |           |            |
| <b>a</b>   | Supply and Laying of 4Pair CAT-6E LAN Cable with suitable PVC Conduite and Junction boxes with etc.  | Pts  | 22  |           |            |
| <b>b</b>   | Supply and fixing of CAT-6E Information out lets Systimax/ Amps/ D Link  | Set  | 22  |           |            |
| <b>c</b>   | Supply of Patch Cards 3' (Factory Crimping)  | Set  | 22  |           |            |
| <b>d</b>   | Supply of Patch Cards 7' (Factory Crimping)  | Set  | 22  |           |            |
| <b>e</b>   | Supply and fixing of 24 port Jack panel (Systimax/ amp)  | Set  | 1   |           |            |
| <b>f</b>   | Supply and fixing of 9U Rack encloser with accries like Self Power manager, Cable Manager, Hard Ware etc.  | Set  | 1   |           |            |
| <b>g</b>   | Supply and fixing of 24 ports d-link switch  | Set  | 1   |           |            |
| <b>TOTAL AMOUNT FOR BRANCH ELECTRICAL WORKS Rs :</b> |  |      |     |           |            |
| <b>*</b>   | <b>Rupees</b>  |      |     |           |            |
|  | <b>GST Extra</b>   |      |     |           |            |
|  |  |      |     |           |            |
|  |  |      |     |           |            |