

**Regional Office, Ahmednagar**  
 First Floor, Plot no. 3,4,8 & 9, Next To Bolhegaon Bridge,  
 Nagar- Manmad Road, Nagapur, Ahmednagar, Maharashtra 414111.

**NOTICE FOR INVITING TENDERS**  
**ONLY FOR EMPANELLED CONTRACTORS**

Sealed tenders/offers on items rate/percentage over estimates/cost basis are invited from empanelled contractors of Pune East and Pune West region having sound technical and financial capacity for undertaking Electrical works at our alternate premises, Subhash Road Branch at Latur as per address given below. Tender documents may be purchased from 10.06.2022 to 30.06.2022 during office hours from our office / downloaded from website.

Interested empanelled contractors may visit our Bank's website [www.unionbankofindia.com](http://www.unionbankofindia.com) and Govt. portal [www.eprocure.gov.in](http://www.eprocure.gov.in) and requested to study the drawings /go through the tender documents, specifications as per Bank's standardization and in case of any difficulty please visit us for seeking clarification, if any, prior to submission of their sealed offers.

Estimated cost of works for Branch	5,40,450.00
Tender Cost	Rs.500/- (Non-refundable) by DD 7 Pay Order favouring Union Bank of India, payable at Ahmednagar. Offer without document/Tender cost will be summarily rejected.
EMD/ Performance Security	Bidders will be required to submit performance security Rs. 16,213.50 in form of DD in favour of Union Bank Of India, Ro Ahmednagar, payable at Ahmednagar. Tenders without Tender cost EMD shall be summarily rejected. Contractors registered with MSME /NSIC or the concerned Ministry or Department notified time to time by Govt. of India/CVC can seek exemption from cost of RFP by providing valid registration certificate along with the document. Incomplete application will not be considered.
Retention Money	Retention money at 3% of total work order will be deducted from final bill and to be held with the bank for defect liability period (one year) and will be released only after completion of Defect liability period on vendor's request.
Time of Completion of work.	30 days from acceptance of work order. Work order to be start immediately after getting the work order.
Time & Submission of Tender	Before 04.00 PM on 30-06-2022
Time & date of Opening of Tender	05.00 PM on 30-06-2022
Address at work site	GROUND FLOOR, PLOT NO 2 (SOUTH PART), SHIVAJI CO-OP. HOUSING SOCIETY, NORTH SIDE OF BARSHI ROAD, LATUR-413512

The bank will not be bound to accept the lowest tender and reserves the right to accept or reject any or all the tenders without assigning any reason.

**Dated: 09-06-2022**  
**Place: Ahmednagar**

**Dy. Regional Head**  
**Regional Office, Ahmednagar**

## *PRICE BID*

*(To be submitted in separate sealed envelope)*

NOTICE FOR INVITATION OF PRICE BIDS FROM EMPANELLED  
CONTRACTORS FOR ELECTRICAL WORK ALTERNATE PREMISES OF  
SUBHASH ROAD BRANCH

Union Bank: Ahmednagar Regional Office: Proposed Refurbishment of Latur Branch, New Premises; Latur.					
Electrical Estimate + Data Network			26-05-22		
<b>A.</b>	<b>POINTS &amp; WIRING</b>				
<b>1</b>	<b>LIGHTS POINTS</b>				
1	Wiring for light point/ fan point/ wall fan point/ exhaust fan/ light sockets etc. with 1.5 sq.mm. PVC insulated 1100 V Grade copper conductor (FRLS) wires & 1.5 sq.mm. copper earth wire in concealed/ surface using 16 SWG MS conduits, accessories such as bends, tees, saddles, draw boxes, mounting boxes, inner plates, cover plates, ceiling rose etc. (wherever required) and chromium plates brass screws/ rowel plug etc. The circuit wiring starting from DB to point control box/ switch box using 2 X 2.5 sq.mm PVC insulated 1100 V grade multistranded copper conductor wire & 2.5 sq.mm. PVC insulated earth wire (color code to be used). (Flexible conduit/ elbow not allowed). The conduit to be laid in ceiling with proper clamps/ wall/ floor and filling the chase with cement mortar and finishing the same in original form/ wooden partition/ above false ceiling with proper clamps etc. all complete.				
	(Wherever required as per standard specifications).				
	i) Each circuit shall have independent earth wire.				
	ii) Each point shall be earthed.				
	iii) Circuit wiring is to be included in point wiring rates.				
i	Primary points controlled by one 6 amp. Modular switch.	Nos.	30		-
ii	Secondary light points controlled by one 6 amp. Modular switch.	Nos.	15		-
iii	One call bell point with ceiling rose/ 6amp. 3 pin socket controlled by one 6 amp. Push Modular switch. With call bell	Nos.	1		-
iv	One wall fan/ exhaust fan point with 6 amp 3pin socket controlled by one 6 amp. Modular switch. The switch should be at switchboard level.	Nos.	3		-
v	One ceiling fan point with 120W Electronic Regulator	Nos.	3		-
vi	One 5 pin socket controlled by one 6 amp. Modular switch complete assembly includes plate box etc. Dependent (RAW Points)	Nos.	10		-
vii	Same as serial no 1 but using 2*2.5 + 1*2.5 Sq.mm Copper Conductor FRLS wires from DB to first 6A, 5 Pin modular socket controlled by one 6A switch and looped to the nearest second point with same 2*2.5 + 1*2.5 Sq.mm copper conductor wires FRLS insulated 1100V grade (max 3 points per circuit).				
a	Primary Point	Nos.	15		-
b	Secondary Point looped	Nos.	5		-
<b>2</b>	<b>POWER POINTS</b>				

Union Bank: Ahmednagar Regional Office: Proposed Refurbishment of Latur Branch, New Premises; Latur.					
	<b>Electrical Estimate + Data Network</b>			26-05-22	
	Same as serial no.1, but wiring for 16 Amp, 6-pin sockets by using 2*4 sq.mm. PVC insulated 1100 V grade copper conductor wire with independent 1* 4.0 sq.mm earth wire from D.B. to first point 1 <sup>st</sup> socket and 1 <sup>st</sup> to 2 <sup>nd</sup> , socket with 2*2.5 sq.mm and 1*2.5 earth wire including providing and fixing of 16 Amp, 6-pin socket with 16 Amp. Switch. (Modular type switch/ socket/ plate etc. complete assembly) max 2 points per circuit.				
a)	Primary Point	Nos.	10		-
b)	Secondary Point	Nos.	5		-
<b>3</b>	<b>AC POINTS FOR INDOOR &amp; OUTDOOR UNITS (for System indoor units)</b>				
3(a)	Same as serial no.1, but wiring for A/C socket by using 2* <b>2.5</b> sq.mm. PVC insulated 1100 V grade copper conductor wire and earthing with 1* <b>2.5</b> sq.mm. PVC insulated 1100 V grade copper conductor wire with modular type AC box (tiny trip type) with socket complete in all respects controlled by <b>6 Amp</b> SP MCB to be provided near indoor unit. The point starts from DB to the point near the indoor unit including top.	Nos.	7		-
3(b)	Same as serial no.1, but wiring for A/C socket by using 2*4	Nos.	0		-
<b>4</b>	<b>COMPUTER POINTS (Electrical)</b>				
a	Wiring with 2x2.5 sq.mm. + 1x2.5 sq.mm. PVC insulated 1100 V grade multi stranded copper conductor wires in 2 mm thick PVC conduit from UPS DB to computer point. Each point to have 3 nos. 6 amps. 5 pin modular type sockets, one 6 amps modular switch with all accessories, inner/ outer plates, metal box etc. and to be fixed on wooden partitions/ by grouting on wall etc. as per requirement at site. The switch should be fixed above the top of counter with indicator and sockets under the counter				
	b) Same as above but looped from the above 1st point to 2nd, point and 2nd point to 3rd point. (Maximum 3 points in a circuit)				
	Primary Points	Nos.	13		-
	Secondary Points	Nos.	2		-
b	Wiring with 2x2.5 sq.mm + 1x2.5 sq.mm PVC insulated 1100 V				
	b) Same as above but looped from the above 1st point to 2nd point (Maximum 2 points in a circuit)				
	Primary Points	Nos.	0		-
	Secondary Points	Nos.	0		-
<b>B.</b>	<b>CONDUITING FOR TELEPHONE</b>				
<b>1</b>	<b>TELEPHONE SYSTEM</b>				

Union Bank: Ahmednagar Regional Office: Proposed Refurbishment of Latur Branch, New Premises; Latur.					
Electrical Estimate + Data Network			26-05-22		
1.1	Wiring for VOICE from Jack Panel in data rack to computer workstation with Cat-6 voice cable in PVC conduits of size 20/25 mm including providing ferrules at both ends and termination at both ends including providing & fixing frame for Cat-6 with shutter, RJ 45 outlet, faceplate and mounting box complete of modular type. This work includes supply and laying of CAT-6 cable in PVC conduits throughout the length, from the I/O hub to the point.	Nos.	13		-
1.2	Supplying, laying, effecting terminations, testing and commissioning of 0.51 mm x 50 pair Cu. Conductor, twisted, colour coded with polythene capor barrier, telephone cables in the existing tray or in conduit including providing &fixing conduit pipe or cable tray as required from building tag block to the floor as required.	Mtr.	100		-
a)	Supplying & fixing 50 pair krone tag block with enclosure.	Nos.	1		-
b)	P/L 20 Pair of PVC insulated PVC sheathed multi core jelly filled	Mtr.	0		-
c)	Panasonic Electronic Modular Switching System MODEL NS-300	Nos			
d)	MDF with Krone Modules 50 pairs with connector	Nos	0		-
<b>C. CABLES, MAINS &amp; SUBMAINS</b>					
1	Supplying all materials and laying/ pulling 1100 volts grade PVC insulated copper conductor wires (FRLS) in MS conduit with all fixing accessories after cutting the floor, wall and the like etc. and plastering the floor level to original. Conduit must be 30 mm below the floor finish level.				
i	2 X 4 sq.mm. + 1 X 4 sq.mm.	RM	100		-
ii	2 X 6 sq.mm. + 1 X 6 sq.mm.	RM	50		-
iii	2 X 10 sq.mm. + 1 X 6 sq.mm. ( UPS DB)	RM	50		-
iv	1 X 10 sq.mm. Cu wire for earthing. (UPS Input/Output)	RM	50		-
v	Supplying, laying, testing & commissioning of 4 C X 6 sq.mm. at 1100 volts grade PVC insulated Copper conductor armoured cable with 10 gauge earth copper wire including cables end termination using appropriate Lugs, Glands, termination accessories, Clamps etc. as required as per specification (Light DB).	RM	75		-
vi	Supplying, laying, testing & commissioning of 4 C X 10 sq.mm. at 1100 volts grade PVC insulated Copper conductor armoured cable with 10 gauge earth copper wire including cables end termination using appropriate Lugs, Glands, termination accessories, Clamps etc. as required as per specification (Power + AC DB).	RM	25		-
vii	Supplying, laying, testing & commissioning of 4 C x 16 sq.mm. at	RM	0		-
<b>D. DISTRIBUTION BOARD</b>					

Union Bank: Ahmednagar Regional Office: Proposed Refurbishment of Latur Branch, New Premises; Latur.					
Electrical Estimate + Data Network			26-05-22		
	Supplying, installing, testing & commissioning of surface/recessed mountings, Double door 415 volts TPN MCB distribution board of steel, 1.6 mm thick dust phosphatized and painted, inclusive of 100 amps, tinned copper bus bars, earth bar, common neutral link, din bar for mounting of MCB's detachable gland / knock out plate & with built in loose wire box, and superior make terminal connectors for all incoming and outgoing circuits duly prewired with adequate size of PVC insulated copper wires between the bus bars and the MCB's as well as the incomer and upto the terminal connectors/ neutral link and ready for installation of following ways as required.				
	Use 'B' curve MCB's for lighting & small power circuits, 'C' curve for motor duty i.e. for pumps, AC motors, window and split AC's etc. & 'D' curve for UPS DB's i.e. for computers/ PC's circuit. Main incomer & outgoing circuit MCB's shall be selected accordingly i.e. type B,C & D. Contractor to select the MCB's accordingly as per the nature of the circuit/ load.				
	Each DB shall have separate neutral links of rating not less than 100A for each phase. The main incoming neutral link shall be in addition to three outgoing neutral links and shall be of 125 A.				
	UPS DB's shall have a dedicated Earthing link fixed on insulated supports, which will be in addition to body earth link.				
	All internal inter connecting wiring with in the DB's shall be PVC insulated flexible copper conductor wires of adequate capacity as per the current rating.				
	Inside each DB, a DB chart is to be fixed.				
a	<b>4-way TPN DB (LIGHT DB)</b>	No.	1		-
	<b>Incomer:-</b>				
	1 No. 40 Amp TPN (10 KA) MCB with 40 A DP RCCB (100 MA) each phase				
	<b>Outgoing:-</b>				
	8 Nos. 6/10 Amp (10 KA) SP MCB				
b	<b>4-way TPN DB (Power DB)</b>	No.	2		-
	<b>Incomer :-</b>				
	1 No. 63 Amp TPN (10 KA) MCB				
	<b>Outgoing :-</b>				
	12 Nos. 10/16/25/32 Amp (10 KA) SP MCB				
c	<b>4-way TPN DB (AC DB)</b>	No.	1		-
	<b>Incomer :-</b>				
	1 No. 40 Amp TPN (10 KA) MCB				
	<b>Outgoing :-</b>				
	7 Nos. 10/16/25/32 Amp (10 KA) SP MCB				

Union Bank: Ahmednagar Regional Office: Proposed Refurbishment of Latur Branch, New Premises; Latur.					
Electrical Estimate + Data Network			26-05-22		
d	4-way Enclosure with 63A FP MCB (For UPS Input)	No.	2		-
e	4-way waterproof Enclosure with 63A FP MCB (For VRF AC / AC)	No.	0		-
f	(8)-way SPN DB (For UPS Sub/output DB)	No.	2		-
	Incomer:-				
	1 No. 40 Amp DP (10 KA) MCB				
	Outgoing:-				
	6 Nos.6/10/16/25Amp (10 KA) SP MCB				
g	8 Way SPN DB for E- Lobby complete with lock & Key	Nos.	0		
h	6 Way SPN DB for E- Lobby complete with lock & Key	Nos.	0		
i	(8)-way SPN DB (For UPS Master DB)	No.	1		-
	Incomer:-				
	1 No. 80 Amp DP (isolater)				
	Outgoing:-				
	4 No. 40 Amp DP (10 KA) MCB				
j	supply, installation, testing and comissioning of Pop-up box 4x2 model with switch/ socket / RJ 45 etc. (legrand)	No.	0		-
<b>E (LIGHT FITTINGS &amp; ACCESSORIES)</b>					
	Supplying, installation with hanging support, testing and commissioning of following light fixtures with electronic Ballasts, Tubes, lamps, all fixing materials including connecting wires etc. all complete as per the directions of Engineer-in-charge (All LED Light Fixtures should be covered with minimum 3 Years onsite replacement warranty).				
i	LED 18 W / 9W tube 4'-0" / 2'-0" As specified in tender document or approved by Bank/Architect.	Nos.	10		-
ii	FULL GLOW 2 X 2 LED 36/40 W slim Smart Panel of make As specified in tender document or approved by Bank/Architect.	Nos.	16		-
iii	Supplying, fixing, testing and commissioning of 18 W LED commercial type down lighter of make As specified in tender document or approved by	Nos.	15		-
iv	LED Strip for cove lighting 15 W per 5 M with driver and	Nos.	0		-
v	Supply, installation, testing and commissioning of following Ceiling fans with all fixing materials like white Polycarbonate 2 mm Hylem sheet cover, down rods, fan box as required etc. all complete as per the directions of Engineer-in-charge.	Nos.	3		-
a	Floor mounted fans (pedestal) (METAL BODY) 400 mm dia.	Nos.	0		-
b	Wall mounted fans (METAL BODY) 400 mm dia. make As specified in tender document or approved by concerned office in charge.	Nos.	10		-

Union Bank: Ahmednagar Regional Office: Proposed Refurbishment of Latur Branch, New Premises; Latur.					
	<b>Electrical Estimate + Data Network</b>			26-05-22	
c	Supply & fixing of 230 mm exhaust fan 'Ventilair DX W' with self closing louvers and plastic body with all accessories etc. complete of make As specified in tender document or approved by concerned office in charge.	Nos.	3		-
<b>F.</b>	<b>EARTHING SYSTEM</b>				
1	Supply, Installation, Testing and Commissioning of Maintenance Free Earthing system made up of copperbonded rod of 10 feet length, 23 mm dia. (Minimum copper bonding shall be 0.25mm) along with Rod-to-Conductor connectors, Earth enhancement material, Pit Cover and other accessories as required and as per specification and other applicable codes (include chamber for earthing, Earthing certificate to be submitted along with the bill).	Nos	3		-
2	Supply, Installation, Testing and Commissioning of Maintenance	Nos	0		-
3	Providing and fixing of Copper/ GI strips in surface or in recess for loop earthing etc. as required.				
i	25 mm x 3 mm copper strip in B-class GI pipe	RM	20		-
ii	25 mm x 5 mm GI strip	RM	20		-
iii	Providing and fixing 1 X 6 SWG dia. Cu earth wire in PVC conduit on surface or in recess for loop earthing along with the existing surface/ recess cable as required.	RM	20		-
<b>G.</b>	<b>MAIN PANEL AND METER BOARD</b>				
	Designing, fabrication, supply, installation, testing and				
	As per the following specifications, (Part IV - Substation) and IS:				
	All live accessible parts shall be shrouded and all equipment				
	Suitable arrangement shall be made for termination of multiple				
	All KA values indicated shall be ICS breaking capacity				
	GA drawings shall be got approved by concerned office in charge.				
a.	Floor panel shall consists of :-				
	<b>INCOMER</b>				
	1 No. 160 Amps, TPN MCCB (25 KA) with extendable rotary handle each thermal over current, instantaneous, Short circuit release, Earth fault.				
b	<b>BUSBARS</b>				
	200 amps TPN pole bus bar chamber of suitable length with				
c	<b>INDICATING PANEL</b>				
	Digital flush type class-1.0 accuracy multifunction meter				
	Red/Green/Amber ON/ OFF/ TRIP indicating lamps with 2A SP				
	1 set of three phase indicating lamps along with 2A SP MCB				
	Restricted Earth fault relay with 3 Nos. current transformers of (Numeric Relay not required.)				
	Under voltage, Overvoltage & phase reversal relay for persisted				
d	<b>OUTGOINGS:-</b>				
	6 Nos 63 A TPN MCB (10 kA) terminals suitable to receive cable				



Union Bank: Ahmednagar Regional Office: Proposed Refurbishment of Latur Branch, New Premises; Latur.					
	<b>Electrical Estimate + Data Network</b>			26-05-22	
	6Nos 40 A DP MCB (10 kA) terminals suitable to receive cable				
	4 Nos 40 A TPN MCB (10 kA) terminals suitable to receive cable				
	The electrical panel as described above and specifications complete.	Set	1		-
<b>I</b>	<b>OUTDOOR TYPE GLOW SIGN BOARD WIRING</b>				
a.	Supply laying of Main line with 2x2.5 + 1x 1.5 Sq.mm through	Mtr.	35		-
b.	To Glow Sign Board				
	Supply installation of 16 Amp. DP MCB at main entrance Glow	Nos.	3		-
<b>J</b>	<b>GENSET WIRING</b>				
a.	Supply laying fixing Main power with ( 3.5 core 35 Sq.mm/As	Mtr.	0		
b.	End termination of 3.5 core 50 Sq.mm armoured cable,	Nos.	0		
<b>K</b>	<b>COMPUTER NETWORKING</b>				
2.1	Wiring for computer networking from Jack Panel in data rack to computer workstation with Cat-6 computer cable in PVC conduits of size 20/ 25 mm including providing ferrules at both ends and termination at both ends including providing & fixing frame for Cat-6 with shutter, RJ 45 outlet, faceplate and mounting box complete of modular type, This work includes supply and laying of CAT-6 cable in PVC conduits throughout the length, from the I/O hub to the point. (approx 400 rmts for Dta Cabeling)	Nos.	15		-
2.2	Removing the existing and refixing the 9 U (Rack with glass door, opening in the front power panel 1 (horizontal), cable manager 1 lock & key). Inclusive of all the accessories and attachments removing from old premises and fixing in the new premises etc complete.	Nos.	1		-
2.3	Supplying and fixing 9 U (Rack with glass door, opening in the	Nos.	0		-
2.4	Supply, Installation, Testing & Commissioning of 24 port Jack Panel.	Nos.	1		-
2.5	Supplying and fixing Patch Cord-2 Meter- (DBPSMounting Cord)	Nos.	10		-
2.6	Supplying and fixing Patch Cord-1 Meter-	Nos.	10		-
	<b>GRAND TOTAL AMOUNT</b>				-
		Add SGST (9% considered)			-
		Add CGST (9% considered)			-
		<b>Gross Total</b>			-

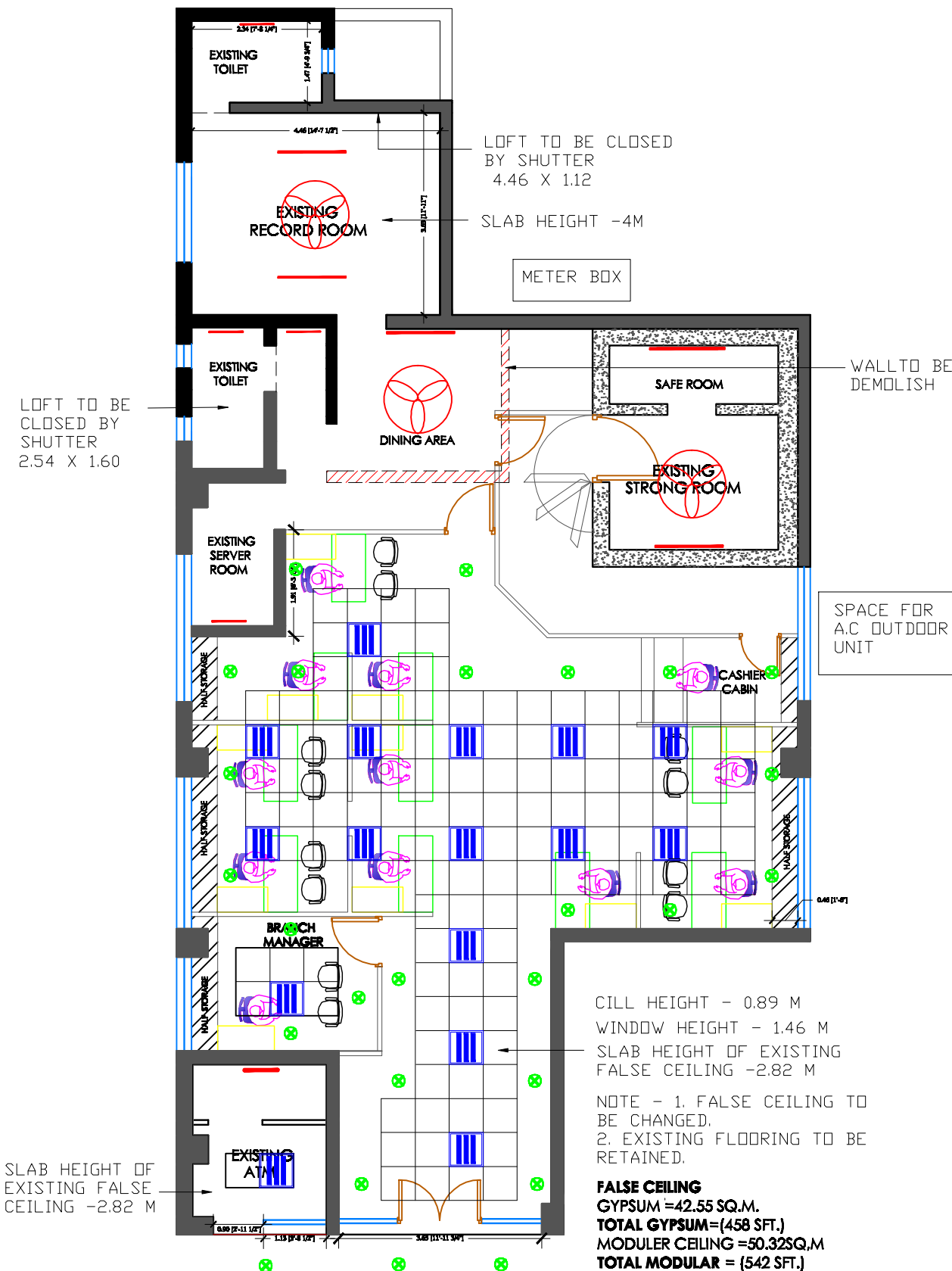
OPTION-2  
26/04/22

# PROPOSED PREMISES AT LATUR FOR UNION BANK



Architect.  
Praveen Desai.

C/o, Shrinwas Garden Society,  
1145, S.M. Road, Opp. Police Ground  
F.C. Road, Shivajinagar, Pune 411016  
Ph - 9897006576



## ELECTRICAL LAYOUT